

Converting Colors

Hex(C18985)

Have a look what the booklet for
Hex(C18985) contains.

Hex(C18985)	3
<i>Conversions</i>	4
<i>Details</i>	6
<i>Harmonies</i>	11
<i>Previews</i>	23
<i>Color Blindness Simulation</i>	26
<i>CSS Examples</i>	29

Color

Hex(C18985)

Conversions

Conversions Part 1

Format	Color
Hex	C18985
RGB	193, 137, 133
RGB Percent	76%, 54%, 52%
CMY	0.2431, 0.4627, 0.4784
CMYK	0.00, 0.29, 0.31, 0.24
HSL	4°, 33%, 64%
HSV	4°, 31%, 76%
XYZ	35.1716, 30.9222, 26.3051
YIQ	153.2880, 34.6600, 10.6280

Conversions

Conversions Part 2

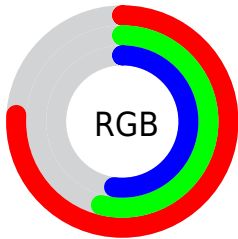
Format	Color
R _{YB}	193, 137, 133
Decimal	12683653
CIE Lab	62.44, 20.86, 10.68
CIE LCh	62, 23.432, 27.120
Yxy	30.9222, 0.3806, 0.3347
Android (android.graphics.Color)	4290873733 (0xFFC18985)
YUV	153.2880, -10.0020, 34.8274
Hunter-Lab	55.6078, 15.5867, 10.8784

Details

The Hex color **C18985** is a light color, and the websafe version is hex **CC9999**. A complement of this color would be **85BDC1**, and the grayscale version is **999999**.

A 20% lighter version of the original color is **FBBFBA**, and **8A5754** is the 20% darker color. If you saturate the color by 10%, you get **C17772**, and if you desaturate by 10%, it is **C19B98**.

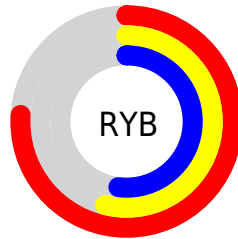
Distribution



Red (76%)

Green (54%)

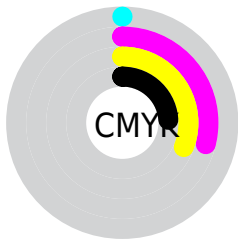
Blue (52%)



Red (76%)

Yellow (54%)

Blue (52%)

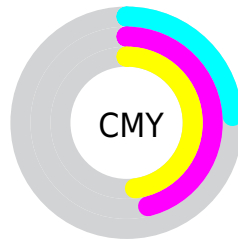


Cyan (0%)

Magenta (29%)

Yellow (31%)

Black (24%)



Cyan (24%)

Magenta (46%)

Yellow (48%)

Brightness & Saturation Gradients

These gradients show how the Hex color C18985 changes by changing the brightness by 10 percent. The first figure shows a shift by +10% for each color and the second figure -10%.

Similar to the brightness gradients but the following saturation gradients show a change of the Hex color C18985 by changing the saturation by 10% instead.

 C18985

 C18985

FFFFFF

 A56F6C

 FBBFBA

 8A5754

 FFDBD6

 6F3F3C

 FFF7F2

 562827

 3D1212

 270000

 000000

 C18985

 C18985

 C17772

 C19B98

 C1655E

 C1ADAC

 C1534B

 C1BFBF

 C14138

 C1D1D2

 C12F25

 C1E3E6

 C11D11

 C1F5F9

 C10D00

 C1FFFF

Harmonies

Analogous

The Analogous color harmony consists of three colors that are next to each other on the color wheel.



BE889A



C18985



B98E75

Triad

The Triadic color harmony groups three colors that are evenly spaced from another and form a triangle on the color wheel.



C18985



7AA080



7A99C0

Complementary

The Complementary color scheme is a pair of colors which are on the opposite of each other on the color wheel.



C18985



85BDC1

Split Complementary

Split-complementary colors differ from the complementary color scheme. The scheme consists of three colors, the original color and two neighbors of the complement color.



629FB9



C18985



65A394

Square

The Square scheme is like the rectangle color scheme, but the four colors are evenly spaced on the color wheel.



C18985



929B72



59A2A9



9892BC

Rectangle

The Rectangle color scheme consists of four colors that form a rectangle on the color wheel.



C18985



AE936F



59A2A9



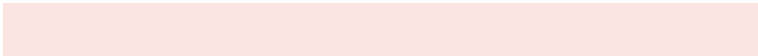
719CBF

Sweetspot

The Sweet Spot groups the original color and five complimentary colors.



C18985



FAE5E3



C185BD



7D706F



FCFCFC



7D7D7D

Same Dimension

The Same Dimension uses a secret algorithm to generate beautiful new colors.



C18985



FAA49D



C1A685



615857



A10B00



210200

Inverse Universe

The Inverse Universe completely reimagines the original color for something new.



85BDC1



9DF4FA



859FC1



576061



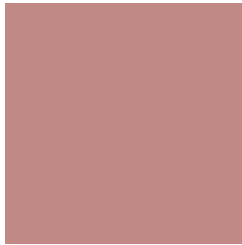
0096A1



001F21

Previews

White Background



This preview shows how the Hex color C18985 looks on a white background.

Color Contrast Check

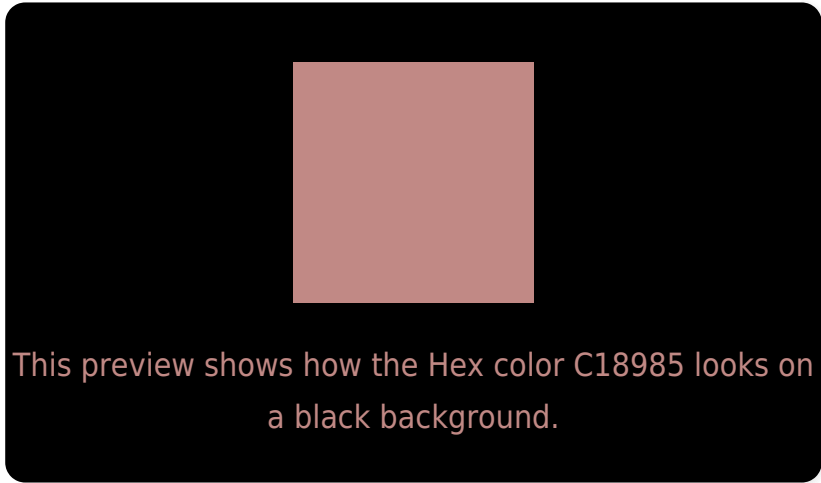
Large Text (above 18pt) WCAG AA × Fail

Any Text WCAG AA × Fail

Large Text (above 18pt) WCAG AAA × Fail

Any Text WCAG AAA × Fail

Black Background



Color Contrast Check

Large Text (above 18pt) WCAG AA ✓ Pass

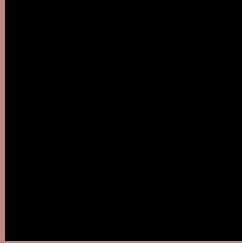
Any Text WCAG AA ✓ Pass

Large Text (above 18pt) WCAG AAA ✓ Pass

Any Text WCAG AAA ✓ Pass

If you want to check with other color combinations, try the [Color Contrast Checker](#).

Hex C18985 Background



This preview shows how black text looks on a background with the Hex color C18985.



This preview shows how white text looks on a background with the Hex color C18985.

Color Blindness Simulation

Color vision deficiency is a very complex topic, and I could not describe the different causes any better than Wikipedia does, so if you want to learn more, you should check out their [article about color blindness](#).

Dichromacy



Original Color
C18985

Protanopia
9D978C

Deuteranopia
AD9283



Tritanopia
C28791

Trichromacy



Original Color
C18985

Protanomaly
AA9289

Deuteranomaly
B48F84

Tritanomaly
C2888D

Monochromacy



Original Color
C18985

Achromatopsia
999999

Achromatomaly
A89392

CSS Examples

Text

The CSS property to change the color of the text to Hex C18985 is called "color". The color property can be set on classes, ids or directly on the HTML element.

This example shows how text in the color #C18985 looks like.

```
.text, #text, p{  
    color:#C18985  
}
```

If you want to add a text shadow in that color use the text-shadow property, you can generate a text shadow directly with our [CSS Text Shadow Generator](#).

Here you see how black text with a 4 pixel #C18985 colored shadow looks like.

```
.shadow{ text-shadow: 4px 4px 2px #C18985
}
```

Border

The CSS property to change the border of an element to Hex C18985 is called "border". The border property can be set on classes, ids or directly on the HTML element.

This example shows the color as border, it can be applied via the CSS property "border" or "border-color".

```
.border, #border, table{ border:4px solid
#C18985 }
```

If only the border color should be changed use the property `border-color`.

```
.border{ border-color:#C18985 }
```

If you want to add a box shadow in that color use:

Here you see how a box with a 4 pixel #C18985 colored shadow looks like.

```
.boxshadow{ -moz-box-shadow:4px 4px 4px  
4px #C18985; -webkit-box-shadow:4px 4px  
4px 4px #C18985; box-shadow:4px 4px 4px  
4px #C18985 }
```

Background

The CSS property to change the background color of an element to Hex C18985 is called "background". The background property can be set on classes, ids or directly on the HTML element.

```
.background, #background, body{  
background:#C18985 }
```

If only the background color should be changed can be used:

```
.background{ background-color:#C18985 }
```

This example shows the color as background, it is applied via the CSS property "background".

To optimize and compress your CSS code, you can use our [online CSS compressor and optimizer](#) based on csstidy. If you want to create a linear or radial gradient as background or border, check our [CSS Gradient Generator](#).

Hey! You found this booklet interesting? Support Converting Colors with the new Membership Option!

The pro membership hides all ads, plus gives you double the colors in the color bucket, and more awesome pro features!

[Learn more, Memberships starting at \\$2.50/m!](#)

**Follow me
on Twitter!**

@ConvertingColor