

Converting Colors

Hex(C18B88)

Have a look what the booklet for
Hex(C18B88) contains.

Hex(C18B88)	3
<i>Conversions</i>	4
<i>Details</i>	6
<i>Harmonies</i>	11
<i>Previews</i>	23
<i>Color Blindness Simulation</i>	26
<i>CSS Examples</i>	29

Color

Hex(C18B88)

Conversions

Conversions Part 1

Format	Color
Hex	C18B88
RGB	193, 139, 136
RGB Percent	76%, 55%, 53%
CMY	0.2431, 0.4549, 0.4667
CMYK	0.00, 0.28, 0.30, 0.24
HSL	3°, 31%, 65%
HSV	3°, 30%, 76%
XYZ	35.6689, 31.5803, 27.5082
YIQ	154.8040, 33.1470, 10.5150

Conversions

Conversions Part 2

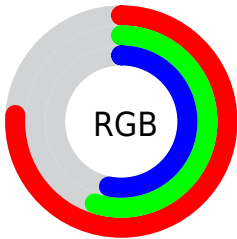
Format	Color
RYB	193, 139, 136
Decimal	12684168
CIELab	62.99, 20.16, 9.76
CIELCh	63, 22.398, 25.843
Yxy	31.5803, 0.3764, 0.3333
Android (android.graphics.Color)	4290874248 (0xFFC18B88)
YUV	154.8040, -9.2704, 33.4979
Hunter-Lab	56.1963, 14.9538, 10.3149

Details

The Hex color **C18B88** is a light color, and the websafe version is hex **CC9999**. A complement of this color would be **88BEC1**, and the grayscale version is **9B9B9B**.

A 20% lighter version of the original color is **FBC1BD**, and **8A5956** is the 20% darker color. If you saturate the color by 10%, you get **C17975**, and if you desaturate by 10%, it is **C19D9B**.

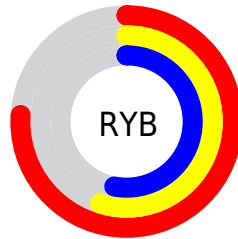
Distribution



Red (76%)

Green (55%)

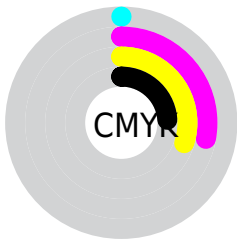
Blue (53%)



Red (76%)

Yellow (55%)

Blue (53%)

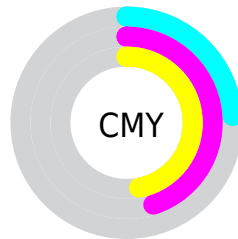


Cyan (0%)

Magenta (28%)

Yellow (30%)

Black (24%)



Cyan (24%)

Magenta (45%)

Yellow (47%)

Brightness & Saturation Gradients

These gradients show how the Hex color C18B88 changes by changing the brightness by 10 percent. The first figure shows a shift by +10% for each color and the second figure -10%.

Similar to the brightness gradients but the following saturation gradients show a change of the Hex color C18B88 by changing the saturation by 10% instead.

 C18B88

 C18B88

FFFFFF

 A5716F

 FBC1BD

 8A5956

 FFDDD9

 70413F

 FFF9F5

 562A29

 3D1415

 280000

 000000

 C18B88

 C18B88

 C17975

 C19D9B

 C16661

 C1B0AF

 C1544E

 C1C2C2

 C1423B

 C1D4D5

 C13027

 C1E6E9

 C11D14

 C1F9FC

 C10B01

 C1FFFF

 C10A00

Harmonies

Analogous

The Analogous color harmony consists of three colors that are next to each other on the color wheel.



BE8A9C



C18B88



BA9078

Triad

The Triadic color harmony groups three colors that are evenly spaced from another and form a triangle on the color wheel.



C18B88



7EA182



7C9BC0

Complementary

The Complementary color scheme is a pair of colors which are on the opposite of each other on the color wheel.



C18B88



88BEC1

Split Complementary

Split-complementary colors differ from the complementary color scheme. The scheme consists of three colors, the original color and two neighbors of the complement color.



66A0B9



C18B88



6AA495

Square

The Square scheme is like the rectangle color scheme, but the four colors are evenly spaced on the color wheel.



C18B88



959C74



5FA3A9



9894BC

Rectangle

The Rectangle color scheme consists of four colors that form a rectangle on the color wheel.



C18B88



B09472



5FA3A9



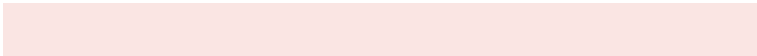
749DBF

Sweetspot

The Sweet Spot groups the original color and five complimentary colors.



C18B88



FAE5E3



C188BE



7D706F



FCFCFC



7D7D7D

Same Dimension

The Same Dimension uses a secret algorithm to generate beautiful new colors.



C18B88



FAA7A2



C1A788



615857



A10800



210200

Inverse Universe

The Inverse Universe completely reimagines the original color for something new.



88BEC1



A2F5FA



88A2C1



576061



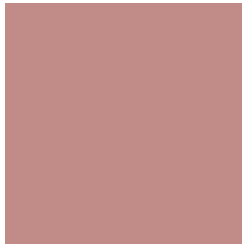
0098A1



001F21

Previews

White Background



This preview shows how the Hex color C18B88 looks on a white background.

Color Contrast Check

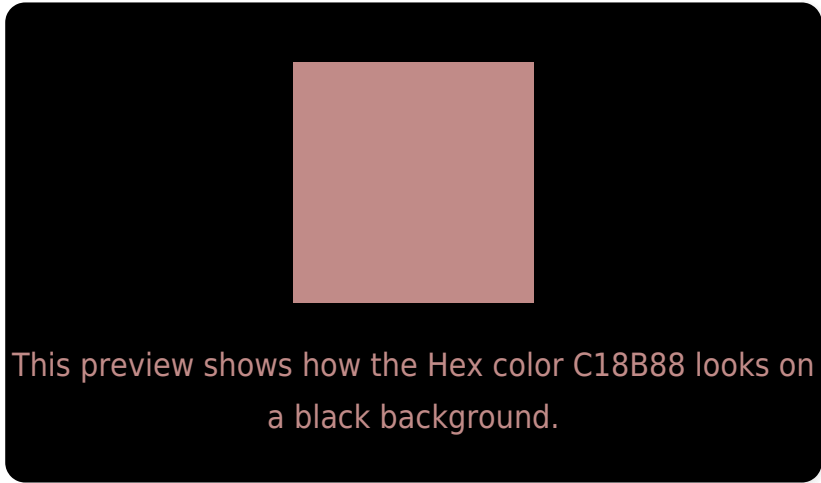
Large Text (above 18pt) WCAG AA × Fail

Any Text WCAG AA × Fail

Large Text (above 18pt) WCAG AAA × Fail

Any Text WCAG AAA × Fail

Black Background



Color Contrast Check

Large Text (above 18pt) WCAG AA ✓ Pass

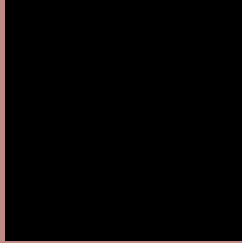
Any Text WCAG AA ✓ Pass

Large Text (above 18pt) WCAG AAA ✓ Pass

Any Text WCAG AAA ✓ Pass

If you want to check with other color combinations, try the [Color Contrast Checker](#).

Hex C18B88 Background



This preview shows how black text looks on a background with the Hex color C18B88.



This preview shows how white text looks on a background with the Hex color C18B88.

Color Blindness Simulation

Color vision deficiency is a very complex topic, and I could not describe the different causes any better than Wikipedia does, so if you want to learn more, you should check out their [article about color blindness](#).

Dichromacy



Original Color
C18B88

Protanopia
9E988F

Deuteranopia
AE9386



Tritanopia
C28994

Trichromacy



Original Color
C18B88

Protanomaly
AB938C

Deuteranomaly
B59087

Tritanomaly
C28A90

Monochromacy



Original Color
C18B88

Achromatopsia
9B9B9B

Achromatomaly
A99594

CSS Examples

Text

The CSS property to change the color of the text to Hex C18B88 is called "color". The color property can be set on classes, ids or directly on the HTML element.

This example shows how text in the color #C18B88 looks like.

```
.text, #text, p{  
    color:#C18B88  
}
```

If you want to add a text shadow in that color use the text-shadow property, you can generate a text shadow directly with our [CSS Text Shadow Generator](#).

Here you see how black text with a 4 pixel #C18B88 colored shadow looks like.

```
.shadow{ text-shadow: 4px 4px 2px #C18B88
}
```

Border

The CSS property to change the border of an element to Hex C18B88 is called "border". The border property can be set on classes, ids or directly on the HTML element.

This example shows the color as border, it can be applied via the CSS property "border" or "border-color".

```
.border, #border, table{ border:4px solid
#C18B88 }
```

If only the border color should be changed use the property `border-color`.

```
.border{ border-color:#C18B88 }
```

If you want to add a box shadow in that color use:

Here you see how a box with a 4 pixel #C18B88 colored shadow looks like.

```
.boxshadow{ -moz-box-shadow:4px 4px 4px  
4px #C18B88; -webkit-box-shadow:4px 4px  
4px 4px #C18B88; box-shadow:4px 4px 4px  
4px #C18B88 }
```

Background

The CSS property to change the background color of an element to Hex C18B88 is called "background". The background property can be set on classes, ids or directly on the HTML element.

```
.background, #background, body{  
background:#C18B88 }
```

If only the background color should be changed can be used:

```
.background{ background-color:#C18B88 }
```

This example shows the color as background, it is applied via the CSS property "background".

To optimize and compress your CSS code, you can use our [online CSS compressor and optimizer](#) based on csstidy. If you want to create a linear or radial gradient as background or border, check our [CSS Gradient Generator](#).

Hey! You found this booklet interesting? Support Converting Colors with the new Membership Option!

The pro membership hides all ads, plus gives you double the colors in the color bucket, and more awesome pro features!

[Learn more, Memberships starting at \\$2.50/m!](#)

**Follow me
on Twitter!**

@ConvertingColor