

Converting Colors

Hex(C18C87)

Have a look what the booklet for
Hex(C18C87) contains.

Hex(C18C87)	3
<i>Conversions</i>	4
<i>Details</i>	6
<i>Harmonies</i>	11
<i>Previews</i>	23
<i>Color Blindness Simulation</i>	26
<i>CSS Examples</i>	29

Color

Hex(C18C87)

Conversions

Conversions Part 1

Format	Color
Hex	C18C87
RGB	193, 140, 135
RGB Percent	76%, 55%, 53%
CMY	0.2431, 0.4510, 0.4706
CMYK	0.00, 0.27, 0.30, 0.24
HSL	5°, 32%, 64%
HSV	5°, 30%, 76%
XYZ	35.7436, 31.8429, 27.1841
YIQ	155.2770, 33.1930, 9.6810

Conversions

Conversions Part 2

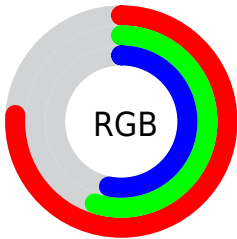
Format	Color
R _Y B	193, 140, 135
Decimal	12684423
CIE Lab	63.21, 19.47, 10.64
CIE LCh	63, 22.185, 28.655
Yxy	31.8429, 0.3772, 0.3360
Android (android.graphics.Color)	4290874503 (0xFFC18C87)
YUV	155.2770, -9.9966, 33.0831
Hunter-Lab	56.4295, 14.3138, 10.9386

Details

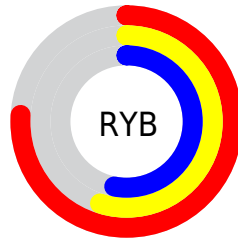
The Hex color **C18C87** is a light color, and the websafe version is hex **CC9999**. A complement of this color would be **87BCC1**, and the grayscale version is **9B9B9B**.

A 20% lighter version of the original color is **FBC2BC**, and **8A5A55** is the 20% darker color. If you saturate the color by 10%, you get **C17A74**, and if you desaturate by 10%, it is **C19E9A**.

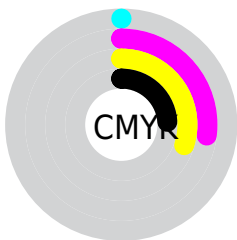
Distribution



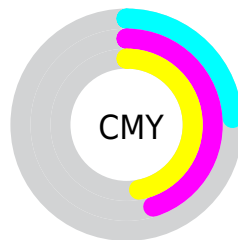
- Red (76%)
- Green (55%)
- Blue (53%)



- Red (76%)
- Yellow (55%)
- Blue (53%)



- Cyan (0%)
- Magenta (27%)
- Yellow (30%)
- Black (24%)



- Cyan (24%)
- Magenta (45%)
- Yellow (47%)

Brightness & Saturation Gradients

These gradients show how the Hex color C18C87 changes by changing the brightness by 10 percent. The first figure shows a shift by +10% for each color and the second figure -10%.

Similar to the brightness gradients but the following saturation gradients show a change of the Hex color C18C87 by changing the saturation by 10% instead.



C18C87



C18C87

FFFFFF



A5726E



FBC2BC



8A5A55



FFDED8



70423E



FFFAF4



562B28



3D1514



280000



000000



C18C87



C18C87



C17A74



C19E9A

 C16960

 C1AFAE

 C1574D

 C1C1C1

 C1453A

 C1D3D4

 C13427

 C1E4E8

 C12213

 C1F6FB

 C11100

 C1FFFF

Harmonies

Analogous

The Analogous color harmony consists of three colors that are next to each other on the color wheel.



BF8B9B



C18C87



B99178

Triad

The Triadic color harmony groups three colors that are evenly spaced from another and form a triangle on the color wheel.



C18C87



7DA284



809BC0

Complementary

The Complementary color scheme is a pair of colors which are on the opposite of each other on the color wheel.



C18C87



87BCC1

Split Complementary

Split-complementary colors differ from the complementary color scheme. The scheme consists of three colors, the original color and two neighbors of the complement color.



69A1BA



C18C87



69A497

Square

The Square scheme is like the rectangle color scheme, but the four colors are evenly spaced on the color wheel.



C18C87



939E76



60A4AB



9B94BC

Rectangle

The Rectangle color scheme consists of four colors that form a rectangle on the color wheel.



C18C87



AF9573



60A4AB



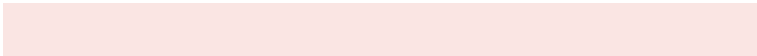
779DBF

Sweetspot

The Sweet Spot groups the original color and five complimentary colors.



C18C87



FAE5E3



C187BC



7D706F



FCFCFC



7D7D7D

Same Dimension

The Same Dimension uses a secret algorithm to generate beautiful new colors.



C18C87



FAA8A0



C1A987



615857



A10E00



210300

Inverse Universe

The Inverse Universe completely reimagines the original color for something new.



87BCC1



A0F2FA



879FC1



576061



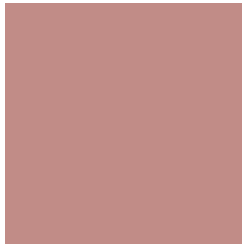
0093A1



001E21

Previews

White Background



This preview shows how the Hex color C18C87 looks on a white background.

Color Contrast Check

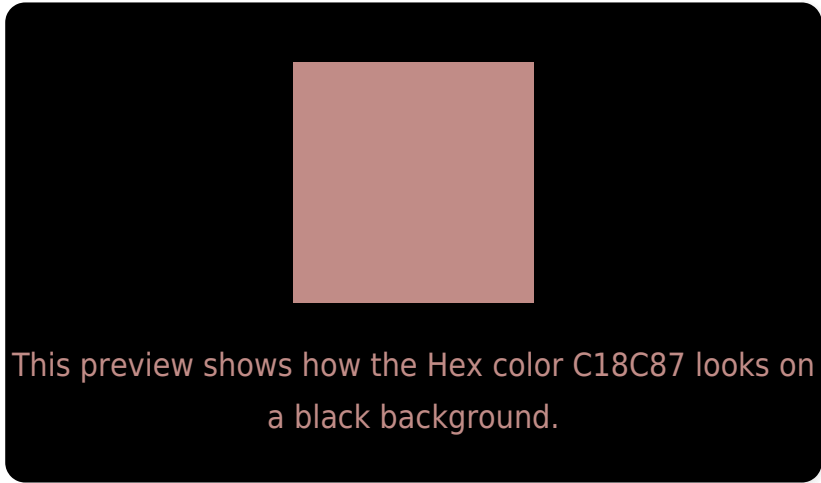
Large Text (above 18pt) WCAG AA × Fail

Any Text WCAG AA × Fail

Large Text (above 18pt) WCAG AAA × Fail

Any Text WCAG AAA × Fail

Black Background



Color Contrast Check

Large Text (above 18pt) WCAG AA ✓ Pass

Any Text WCAG AA ✓ Pass

Large Text (above 18pt) WCAG AAA ✓ Pass

Any Text WCAG AAA ✓ Pass

If you want to check with other color combinations, try the [Color Contrast Checker](#).

Hex C18C87 Background



This preview shows how black text looks on a background with the Hex color C18C87.



This preview shows how white text looks on a background with the Hex color C18C87.

Color Blindness Simulation

Color vision deficiency is a very complex topic, and I could not describe the different causes any better than Wikipedia does, so if you want to learn more, you should check out their [article about color blindness](#).


Dichromacy



Original Color
C18C87

Protanopia
9F998E

Deuteranopia
AF9486



Tritanopia
C28A94

Trichromacy



Original Color
C18C87

Protanomaly
AB948B

Deuteranomaly
B69186

Tritanomaly
C28B8F

Monochromacy



Original Color
C18C87

Achromatopsia
9B9B9B

Achromatomaly
A99694

CSS Examples

Text

The CSS property to change the color of the text to Hex C18C87 is called "color". The color property can be set on classes, ids or directly on the HTML element.

This example shows how text in the color #C18C87 looks like.

```
.text, #text, p{  
    color:#C18C87  
}
```

If you want to add a text shadow in that color use the text-shadow property, you can generate a text shadow directly with our [CSS Text Shadow Generator](#).

Here you see how black text with a 4 pixel #C18C87 colored shadow looks like.

```
.shadow{ text-shadow: 4px 4px 2px #C18C87  
}
```

Border

The CSS property to change the border of an element to Hex C18C87 is called "border". The border property can be set on classes, ids or directly on the HTML element.

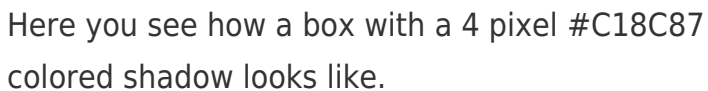
This example shows the color as border, it can be applied via the CSS property "border" or "border-color".

```
.border, #border, table{ border:4px solid  
#C18C87 }
```

If only the border color should be changed use the property `border-color`.

```
.border{ border-color:#C18C87 }
```

If you want to add a box shadow in that color use:



Here you see how a box with a 4 pixel #C18C87 colored shadow looks like.

```
.boxshadow{ -moz-box-shadow:4px 4px 4px  
4px #C18C87; -webkit-box-shadow:4px 4px  
4px 4px #C18C87; box-shadow:4px 4px 4px  
4px #C18C87 }
```

Background

The CSS property to change the background color of an element to Hex C18C87 is called "background". The background property can be set on classes, ids or directly on the HTML element.

```
.background, #background, body{  
background:#C18C87 }
```

If only the background color should be changed can be used:

```
.background{ background-color:#C18C87 }
```

This example shows the color as background, it is applied via the CSS property "background".

To optimize and compress your CSS code, you can use our [online CSS compressor and optimizer](#) based on csstidy. If you want to create a linear or radial gradient as background or border, check our [CSS Gradient Generator](#).

Hey! You found this booklet interesting? Support Converting Colors with the new Membership Option!

The pro membership hides all ads, plus gives you double the colors in the color bucket, and more awesome pro features!

[Learn more, Memberships starting at \\$2.50/m!](#)

**Follow me
on Twitter!**

@ConvertingColor