

Converting Colors

Hex(C18E5F)

Have a look what the booklet for
Hex(C18E5F) contains.

Hex(C18E5F)	3
<i>Conversions</i>	4
<i>Details</i>	6
<i>Harmonies</i>	11
<i>Previews</i>	23
<i>Color Blindness Simulation</i>	26
<i>CSS Examples</i>	29

Color

Hex(C18E5F)

Conversions

Conversions Part 1

Format	Color
Hex	C18E5F
RGB	193, 142, 95
RGB Percent	76%, 56%, 37%
CMY	0.2431, 0.4431, 0.6275
CMYK	0.00, 0.26, 0.51, 0.24
HSL	29°, 44%, 56%
HSV	29°, 51%, 76%
XYZ	33.7309, 31.5097, 15.1306
YIQ	151.8910, 45.4830, -3.8050

Conversions

Conversions Part 2

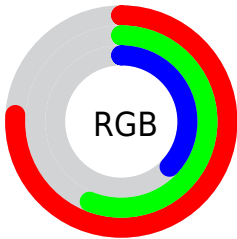
Format	Color
RYB	193, 185, 95
Decimal	12684895
CIELab	62.94, 13.76, 32.50
CIELCh	63, 35.295, 67.058
Yxy	31.5097, 0.4197, 0.3921
Android (android.graphics.Color)	4290874975 (0xFFC18E5F)
YUV	151.8910, -28.0473, 36.0526
Hunter-Lab	56.1335, 9.0279, 23.3120

Details

The Hex color **C18E5F** is a dark color, and the websafe version is hex **CC9966**. The color can be described as middle muted orange. A complement of this color would be **5F92C1**, and the grayscale version is **989898**.

A 20% lighter version of the original color is **FCC492**, and **895C2F** is the 20% darker color. If you saturate the color by 10%, you get **C1844C**, and if you desaturate by 10%, it is **C19872**.

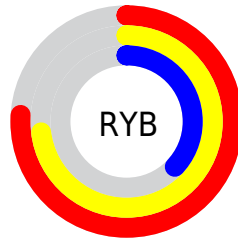
Distribution



Red (76%)

Green (56%)

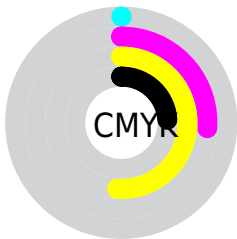
Blue (37%)



Red (76%)

Yellow (73%)

Blue (37%)

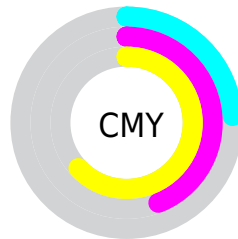


Cyan (0%)

Magenta (26%)

Yellow (51%)

Black (24%)



Cyan (24%)

Magenta (44%)

Yellow (63%)

Brightness & Saturation Gradients

These gradients show how the Hex color C18E5F changes by changing the brightness by 10 percent. The first figure shows a shift by +10% for each color and the second figure -10%.

Similar to the brightness gradients but the following saturation gradients show a change of the Hex color C18E5F by changing the saturation by 10% instead.

 C18E5F

 C18E5F

FFFFFF

 A57447

 FCC492

 895C2F

 FFE0AD

 6E4419

 FFFCC9

 532E00

 FFFFFE5

 391900

 220000

 000000

 C18E5F

 C18E5F

 C1844C

 C19872

 C17A38

 C1A286

 C17025

 C1AC99

 C16612

 C1B6AC

 C15D00

 C1C0C0

 C1CAD3

 C1D4E6

 C1DEF9

 C1E8FF

Harmonies

Analogous

The Analogous color harmony consists of three colors that are next to each other on the color wheel.



D28474



C18E5F



A69959

Triad

The Triadic color harmony groups three colors that are evenly spaced from another and form a triangle on the color wheel.



C18E5F



2FA99F



A68DCA

Complementary

The Complementary color scheme is a pair of colors which are on the opposite of each other on the color wheel.



C18E5F



5F92C1

Split Complementary

Split-complementary colors differ from the complementary color scheme. The scheme consists of three colors, the original color and two neighbors of the complement color.



7799D6



C18E5F



00A8BD

Square

The Square scheme is like the rectangle color scheme, but the four colors are evenly spaced on the color wheel.



C18E5F



5DA77F



3EA2D1



C683B1

Rectangle

The Rectangle color scheme consists of four colors that form a rectangle on the color wheel.



C18E5F



909F5F



3EA2D1



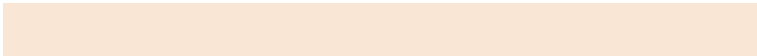
9791D0

Sweetspot

The Sweet Spot groups the original color and five complimentary colors.



C18E5F



FAE6D4



C15F93



7D7166



FCFCFC



7D7D7D

Same Dimension

The Same Dimension uses a secret algorithm to generate beautiful new colors.



C18E5F



FAAB61



C1BE5F



615C57



A14D00



211000

Inverse Universe

The Inverse Universe completely reimagines the original color for something new.



5F92C1



61B1FA



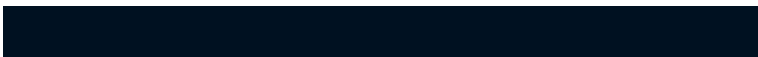
5F62C1



575C61



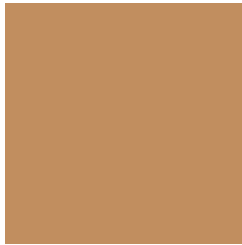
0054A1



001121

Previews

White Background



This preview shows how the Hex color C18E5F looks on a white background.

Color Contrast Check

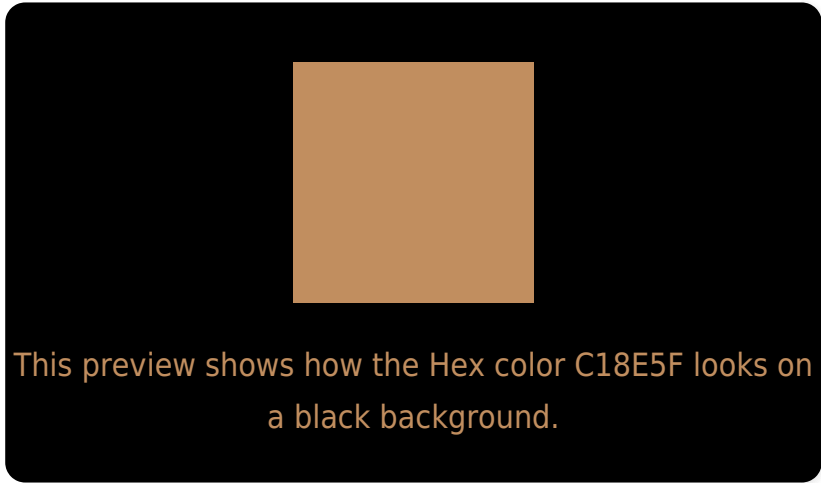
Large Text (above 18pt) WCAG AA × Fail

Any Text WCAG AA × Fail

Large Text (above 18pt) WCAG AAA × Fail

Any Text WCAG AAA × Fail

Black Background



Color Contrast Check

Large Text (above 18pt) WCAG AA ✓ Pass

Any Text WCAG AA ✓ Pass

Large Text (above 18pt) WCAG AAA ✓ Pass

Any Text WCAG AAA ✓ Pass

If you want to check with other color combinations, try the [Color Contrast Checker](#).

Hex C18E5F Background



This preview shows how black text looks on a background with the Hex color C18E5F.



This preview shows how white text looks on a background with the Hex color C18E5F.

Color Blindness Simulation

Color vision deficiency is a very complex topic, and I could not describe the different causes any better than Wikipedia does, so if you want to learn more, you should check out their [article about color blindness](#).

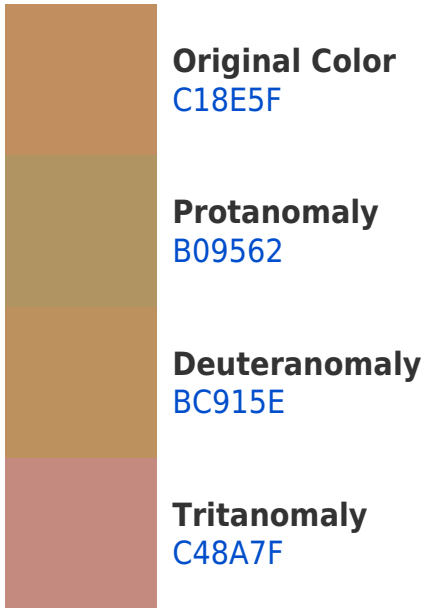
Dichromacy



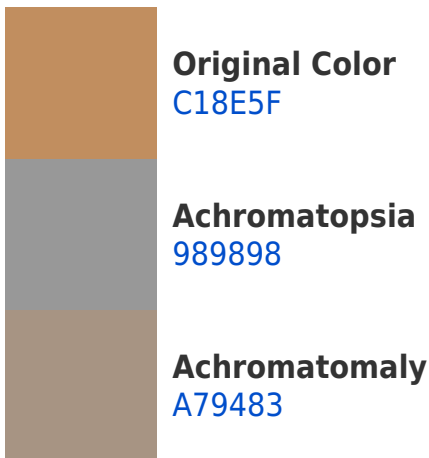


Tritanopia
C58892

Trichromacy



Monochromacy



CSS Examples

Text

The CSS property to change the color of the text to Hex C18E5F is called "color". The color property can be set on classes, ids or directly on the HTML element.

This example shows how text in the color #C18E5F looks like.

```
.text, #text, p{  
    color:#C18E5F  
}
```

If you want to add a text shadow in that color use the text-shadow property, you can generate a text shadow directly with our [CSS Text Shadow Generator](#).

Here you see how black text with a 4 pixel #C18E5F colored shadow looks like.

```
.shadow{ text-shadow: 4px 4px 2px #C18E5F
}
```

Border

The CSS property to change the border of an element to Hex C18E5F is called "border". The border property can be set on classes, ids or directly on the HTML element.

This example shows the color as border, it can be applied via the CSS property "border" or "border-color".

```
.border, #border, table{ border:4px solid
#C18E5F }
```

If only the border color should be changed use the property `border-color`.

```
.border{ border-color:#C18E5F }
```

If you want to add a box shadow in that color use:

Here you see how a box with a 4 pixel #C18E5F colored shadow looks like.

```
.boxshadow{ -moz-box-shadow:4px 4px 4px  
4px #C18E5F; -webkit-box-shadow:4px 4px  
4px 4px #C18E5F; box-shadow:4px 4px 4px  
4px #C18E5F }
```

Background

The CSS property to change the background color of an element to Hex C18E5F is called "background". The background property can be set on classes, ids or directly on the HTML element.

```
.background, #background, body{  
background:#C18E5F }
```

If only the background color should be changed can be used:

```
.background{ background-color:#C18E5F }
```

This example shows the color as background, it is applied via the CSS property "background".

To optimize and compress your CSS code, you can use our [online CSS compressor and optimizer](#) based on csstidy. If you want to create a linear or radial gradient as background or border, check our [CSS Gradient Generator](#).

Hey! You found this booklet interesting? Support Converting Colors with the new Membership Option!

The pro membership hides all ads, plus gives you double the colors in the color bucket, and more awesome pro features!

[Learn more, Memberships starting at \\$2.50/m!](#)

**Follow me
on Twitter!**

@ConvertingColor