

# Converting Colors

Hex(C19091)

Have a look what the booklet for  
Hex(C19091) contains.

<b>Hex(C19091)</b> .....	3
<i><b>Conversions</b></i> .....	4
<i><b>Details</b></i> .....	6
<i><b>Harmonies</b></i> .....	11
<i><b>Previews</b></i> .....	23
<i><b>Color Blindness Simulation</b></i> .....	26
<i><b>CSS Examples</b></i> .....	29

# **Color**

**Hex(C19091)**

# Conversions

## Conversions Part 1

<b>Format</b>	<b>Color</b>
Hex	C19091
RGB	193, 144, 145
RGB Percent	76%, 56%, 57%
CMY	0.2431, 0.4353, 0.4314
CMYK	0.00, 0.25, 0.25, 0.24
HSL	359°, 28%, 66%
HSV	359°, 25%, 76%
XYZ	37.0764, 33.3283, 31.2669
YIQ	158.7650, 28.8830, 10.6990

# Conversions

## Conversions Part 2

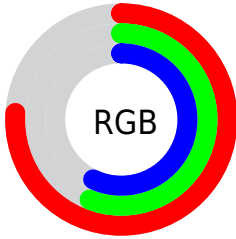
<b>Format</b>	<b>Color</b>
<b>R<sub>YB</sub></b>	193, 144, 145
Decimal	12685457
CIE <sub>Lab</sub>	64.43, 18.67, 6.72
CIE <sub>LCh</sub>	64, 19.842, 19.786
Yxy	33.3283, 0.3647, 0.3278
Android (android.graphics.Color)	4290875537 (0xFFC19091)
YUV	158.7650, -6.7861, 30.0241
Hunter-Lab	57.7307, 13.6095, 8.3000

# Details

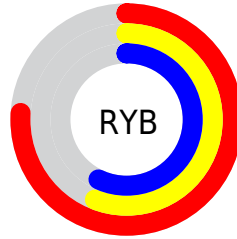
The Hex color **C19091** is a light color, and the websafe version is hex **CC9999**. A complement of this color would be **90C1C0**, and the grayscale version is **9F9F9F**.

A 20% lighter version of the original color is **FAC6C7**, and **8A5D5F** is the 20% darker color. If you saturate the color by 10%, you get **C17D7E**, and if you desaturate by 10%, it is **C1A3A4**.

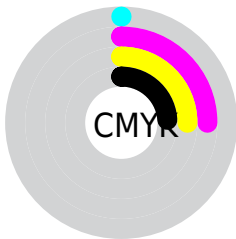
# Distribution



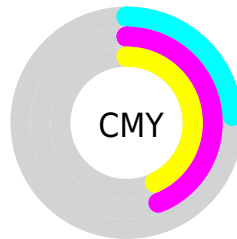
- Red (76%)
- Green (56%)
- Blue (57%)



- Red (76%)
- Yellow (56%)
- Blue (57%)



- Cyan (0%)
- Magenta (25%)
- Yellow (25%)
- Black (24%)



- Cyan (24%)
- Magenta (44%)
- Yellow (43%)

# Brightness & Saturation Gradients

These gradients show how the Hex color C19091 changes by changing the brightness by 10 percent. The first figure shows a shift by +10% for each color and the second figure -10%.

Similar to the brightness gradients but the following saturation gradients show a change of the Hex color C19091 by changing the saturation by 10% instead.



 C19091

 C19091

FFFFFF

 A57677

 FAC6C7

 8A5D5F

 FFE2E3

 704547

 572F31

 3E191C

 290101

 000000

 C19091

 C19091

 C17D7E

 C1A3A4

 C1696B

 C1B7B7

 C15658

 C1CACA

 C14345

 C1DDDD

 C12F32

 C1F1F0

 C11C20

 C1FFFF

 C1090D

 C10004

# Harmonies

## Analogous

The Analogous color harmony consists of three colors that are next to each other on the color wheel.



BC90A3



C19091



BC9382

# Triad

The Triadic color harmony groups three colors that are evenly spaced from another and form a triangle on the color wheel.



C19091



89A385



80A0BF

# Complementary

The Complementary color scheme is a pair of colors which are on the opposite of each other on the color wheel.



C19091



90C1C0

# Split Complementary

Split-complementary colors differ from the complementary color scheme. The scheme consists of three colors, the original color and two neighbors of the complement color.



6FA4B7



C19091



77A695

# Square

The Square scheme is like the rectangle color scheme, but the four colors are evenly spaced on the color wheel.



C19091



9D9F7B



6CA6A8



979ABD

# Rectangle

The Rectangle color scheme consists of four colors that form a rectangle on the color wheel.



C19091



B4977B



6CA6A8



79A1BD

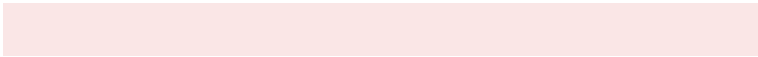


# Sweetspot

The Sweet Spot groups the original color and five complimentary colors.



C19091



FAE6E6



BF90C1



7D7071



FCFCFC



7D7D7D



# Same Dimension

The Same Dimension uses a secret algorithm to generate beautiful new colors.



C19091



FAAFB0



C1A790



615757



A10003



210001



# Inverse Universe

The Inverse Universe completely reimagines the original color for something new.



C19091



FAAFB0



90AAC1



615757



A10003

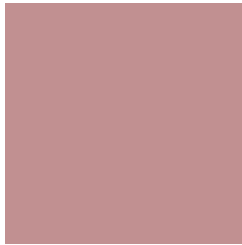


210001



# Previews

## White Background



This preview shows how the Hex color C19091 looks on a white background.

## Color Contrast Check

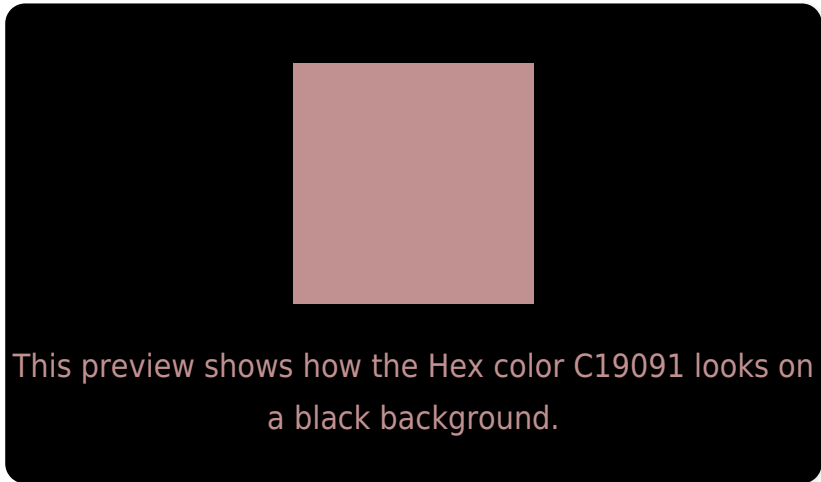
Large Text (above 18pt) WCAG AA × Fail

Any Text WCAG AA × Fail

Large Text (above 18pt) WCAG AAA × Fail

Any Text WCAG AAA × Fail

# Black Background



## Color Contrast Check

Large Text (above 18pt) WCAG AA ✓ Pass

Any Text WCAG AA ✓ Pass

Large Text (above 18pt) WCAG AAA ✓ Pass

Any Text WCAG AAA ✓ Pass

If you want to check with other color combinations, try the [Color Contrast Checker](#).



## Hex C19091 Background



This preview shows how black text looks on a background with the Hex color C19091.



This preview shows how white text looks on a background with the Hex color C19091.

# Color Blindness Simulation

Color vision deficiency is a very complex topic, and I could not describe the different causes any better than Wikipedia does, so if you want to learn more, you should check out their [article about color blindness](#).

## Dichromacy



**Original Color**  
C19091

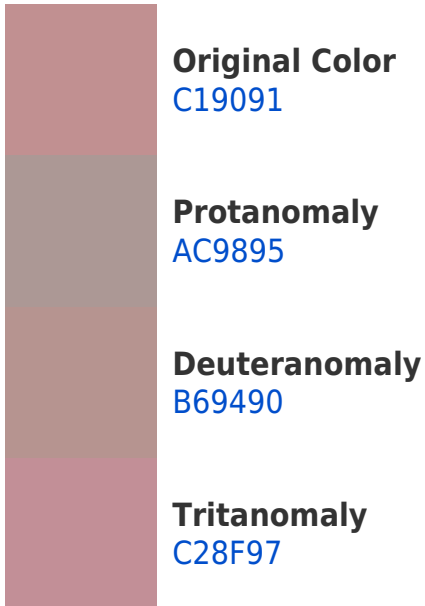
**Protanopia**  
A09C97

**Deuteranopia**  
B09790

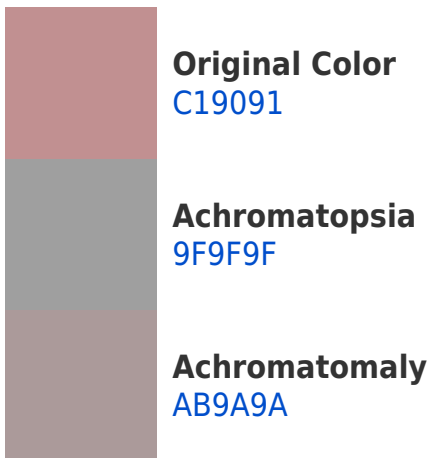


**Tritanopia**  
C28F9A

# Trichromacy



# Monochromacy



# CSS Examples

## Text

The CSS property to change the color of the text to Hex C19091 is called "color". The color property can be set on classes, ids or directly on the HTML element.

This example shows how text in the color #C19091 looks like.

```
.text, #text, p{  
    color:#C19091  
}
```

If you want to add a text shadow in that color use the text-shadow property, you can generate a text shadow directly with our [CSS Text Shadow Generator](#).

Here you see how black text with a 4 pixel #C19091 colored shadow looks like.

```
.shadow{ text-shadow: 4px 4px 2px #C19091
}
```

## Border

The CSS property to change the border of an element to Hex C19091 is called "border". The border property can be set on classes, ids or directly on the HTML element.

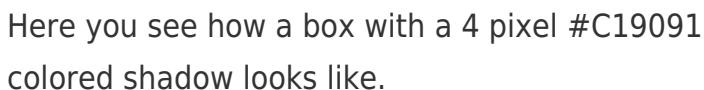
This example shows the color as border, it can be applied via the CSS property "border" or "border-color".

```
.border, #border, table{ border:4px solid
#C19091 }
```

If only the border color should be changed use the property `border-color`.

```
.border{ border-color:#C19091 }
```

If you want to add a box shadow in that color use:



Here you see how a box with a 4 pixel #C19091 colored shadow looks like.

```
.boxshadow{ -moz-box-shadow:4px 4px 4px  
4px #C19091; -webkit-box-shadow:4px 4px  
4px 4px #C19091; box-shadow:4px 4px 4px  
4px #C19091 }
```

# Background

The CSS property to change the background color of an element to Hex C19091 is called "background". The background property can be set on classes, ids or directly on the HTML element.

```
.background, #background, body{  
background:#C19091 }
```

If only the background color should be changed can be used:

```
.background{ background-color:#C19091 }
```

This example shows the color as background, it is applied via the CSS property "background".

To optimize and compress your CSS code, you can use our [online CSS compressor and optimizer](#) based on csstidy. If you want to create a linear or radial gradient as background or border, check our [CSS Gradient Generator](#).



Hey! You found this booklet interesting? Support Converting Colors with the new Membership Option!

The pro membership hides all ads, plus gives you double the colors in the color bucket, and more awesome pro features!

**[Learn more, Memberships starting at \\$2.50/m!](#)**

**Follow me  
on Twitter!**

@ConvertingColor