

# Converting Colors

Hex(C1938F)

Have a look what the booklet for  
Hex(C1938F) contains.

<b>Hex(C1938F)</b> .....	3
<i><b>Conversions</b></i> .....	4
<i><b>Details</b></i> .....	6
<i><b>Harmonies</b></i> .....	11
<i><b>Previews</b></i> .....	23
<i><b>Color Blindness Simulation</b></i> .....	26
<i><b>CSS Examples</b></i> .....	29

# **Color**

**Hex(C1938F)**

# Conversions

## Conversions Part 1

<b>Format</b>	<b>Color</b>
Hex	C1938F
RGB	193, 147, 143
RGB Percent	76%, 58%, 56%
CMY	0.2431, 0.4235, 0.4392
CMYK	0.00, 0.24, 0.26, 0.24
HSL	5°, 29%, 66%
HSV	5°, 26%, 76%
XYZ	37.3840, 34.1881, 30.6152
YIQ	160.2980, 28.7000, 8.5080

# Conversions

## Conversions Part 2

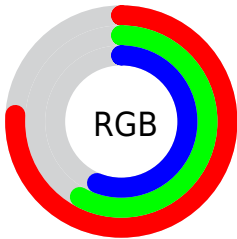
<b>Format</b>	<b>Color</b>
<b>R<sub>YB</sub></b>	193, 147, 143
Decimal	12686223
CIE Lab	65.11, 16.72, 8.82
CIE LCh	65, 18.907, 27.815
Yxy	34.1881, 0.3658, 0.3346
Android (android.graphics.Color)	4290876303 (0xFFC1938F)
YUV	160.2980, -8.5279, 28.6797
Hunter-Lab	58.4706, 11.8030, 9.8851

# Details

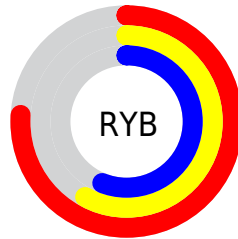
The Hex color **C1938F** is a light color, and the websafe version is hex **CC9999**. A complement of this color would be **8FBDC1**, and the grayscale version is **A0A0A0**.

A 20% lighter version of the original color is **FAC9C5**, and **8A605D** is the 20% darker color. If you saturate the color by 10%, you get **C1817C**, and if you desaturate by 10%, it is **C1A5A2**.

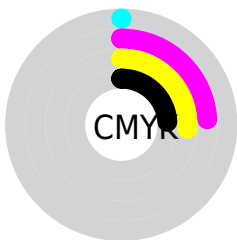
# Distribution



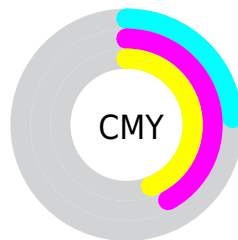
- Red (76%)
- Green (58%)
- Blue (56%)



- Red (76%)
- Yellow (58%)
- Blue (56%)



- Cyan (0%)
- Magenta (24%)
- Yellow (26%)
- Black (24%)



- Cyan (24%)
- Magenta (42%)
- Yellow (44%)

# Brightness & Saturation Gradients

These gradients show how the Hex color C1938F changes by changing the brightness by 10 percent. The first figure shows a shift by +10% for each color and the second figure -10%.

Similar to the brightness gradients but the following saturation gradients show a change of the Hex color C1938F by changing the saturation by 10% instead.



 C1938F

FFFFFF

 FAC9C5

 FFE5E1

FFFFFFD

 C1938F

 C1817C

 C1938F

 A57975

 8A605D

 704845

 57312F

 3E1C1A

 290500

 000000

 C1938F

 C1A5A2

 C16F68

 C1B7B6

 C15E55

 C1C8C9

 C14C42

 C1DADC

 C13A2F

 C1ECF0

 C1281B

 C1FEFF

 C11708

 C1FFFF

 C10F00

# Harmonies

## Analogous

The Analogous color harmony consists of three colors that are next to each other on the color wheel.



BF92A0



C1938F



BA9782

# Triad

The Triadic color harmony groups three colors that are evenly spaced from another and form a triangle on the color wheel.



C1938F



87A68C



89A0BF

# Complementary

The Complementary color scheme is a pair of colors which are on the opposite of each other on the color wheel.



C1938F



8FBDC1

# Split Complementary

Split-complementary colors differ from the complementary color scheme. The scheme consists of three colors, the original color and two neighbors of the complement color.



76A5BA



C1938F



77A89C

# Square

The Square scheme is like the rectangle color scheme, but the four colors are evenly spaced on the color wheel.



C1938F



9AA280



70A7AD



9F9ABC

# Rectangle

The Rectangle color scheme consists of four colors that form a rectangle on the color wheel.



C1938F



B29B7D



70A7AD



82A2BF

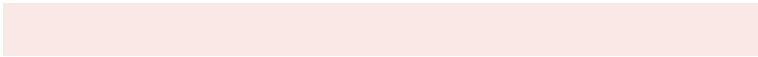


# Sweetspot

The Sweet Spot groups the original color and five complimentary colors.



C1938F



FAE8E6



C18FBE



7D7170



FCFCFC



7D7D7D



# Same Dimension

The Same Dimension uses a secret algorithm to generate beautiful new colors.



C1938F



FAB3AC



C1AB8F



615857



A10D00



210300



# Inverse Universe

The Inverse Universe completely reimagines the original color for something new.



8FBDC1



ACF4FA



8FA5C1



576061



0094A1

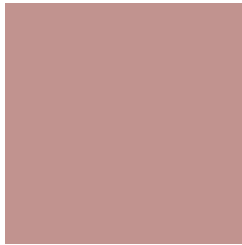


001E21



# Previews

## White Background



This preview shows how the Hex color C1938F looks on a white background.

## Color Contrast Check

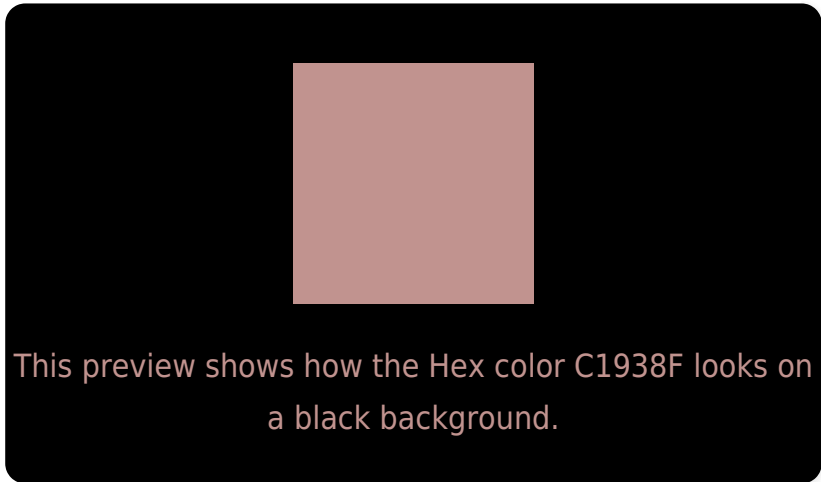
Large Text (above 18pt) WCAG AA × Fail

Any Text WCAG AA × Fail

Large Text (above 18pt) WCAG AAA × Fail

Any Text WCAG AAA × Fail

# Black Background



## Color Contrast Check

Large Text (above 18pt) WCAG AA ✓ Pass

Any Text WCAG AA ✓ Pass

Large Text (above 18pt) WCAG AAA ✓ Pass

Any Text WCAG AAA ✓ Pass

If you want to check with other color combinations, try the [Color Contrast Checker](#).



## Hex C1938F Background



This preview shows how black text looks on a background with the Hex color C1938F.

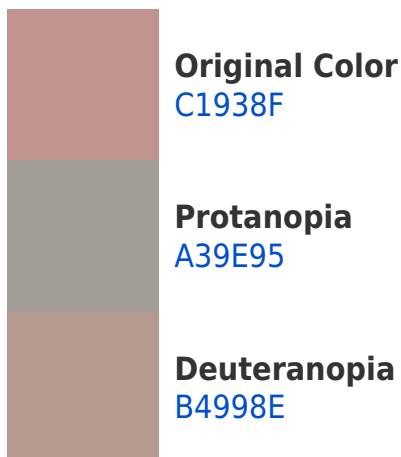


This preview shows how white text looks on a background with the Hex color C1938F.

# Color Blindness Simulation

Color vision deficiency is a very complex topic, and I could not describe the different causes any better than Wikipedia does, so if you want to learn more, you should check out their [article about color blindness](#).

## Dichromacy





**Tritanopia**  
C2919C

# Trichromacy



**Original Color**  
C1938F

**Protanomaly**  
AE9A93

**Deuteranomaly**  
B9978E

**Tritanomaly**  
C29297

# Monochromacy



**Original Color**  
C1938F

**Achromatopsia**  
A0A0A0

**Achromatomaly**  
AC9B9A

# CSS Examples

## Text

The CSS property to change the color of the text to Hex C1938F is called "color". The color property can be set on classes, ids or directly on the HTML element.

This example shows how text in the color #C1938F looks like.

```
.text, #text, p{  
    color:#C1938F  
}
```

If you want to add a text shadow in that color use the text-shadow property, you can generate a text shadow directly with our [CSS Text Shadow Generator](#).

Here you see how black text with a 4 pixel #C1938F colored shadow looks like.

```
.shadow{ text-shadow: 4px 4px 2px #C1938F
}
```

## Border

The CSS property to change the border of an element to Hex C1938F is called "border". The border property can be set on classes, ids or directly on the HTML element.

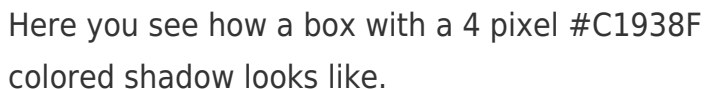
This example shows the color as border, it can be applied via the CSS property "border" or "border-color".

```
.border, #border, table{ border:4px solid
#C1938F }
```

If only the border color should be changed use the property `border-color`.

```
.border{ border-color:#C1938F }
```

If you want to add a box shadow in that color use:



Here you see how a box with a 4 pixel #C1938F colored shadow looks like.

```
.boxshadow{ -moz-box-shadow:4px 4px 4px  
4px #C1938F; -webkit-box-shadow:4px 4px  
4px 4px #C1938F; box-shadow:4px 4px 4px  
4px #C1938F }
```

# Background

The CSS property to change the background color of an element to Hex C1938F is called "background". The background property can be set on classes, ids or directly on the HTML element.

```
.background, #background, body{  
background:#C1938F }
```

If only the background color should be changed can be used:

```
.background{ background-color:#C1938F }
```

This example shows the color as background, it is applied via the CSS property "background".

To optimize and compress your CSS code, you can use our [online CSS compressor and optimizer](#) based on csstidy. If you want to create a linear or radial gradient as background or border, check our [CSS Gradient Generator](#).



Hey! You found this booklet interesting? Support Converting Colors with the new Membership Option!

The pro membership hides all ads, plus gives you double the colors in the color bucket, and more awesome pro features!

**[Learn more, Memberships starting at \\$2.50/m!](#)**

**Follow me  
on Twitter!**

@ConvertingColor