

Converting Colors

Hex(C19394)

Have a look what the booklet for
Hex(C19394) contains.

Hex(C19394)	3
<i>Conversions</i>	4
<i>Details</i>	6
<i>Harmonies</i>	11
<i>Previews</i>	23
<i>Color Blindness Simulation</i>	26
<i>CSS Examples</i>	29

Color

Hex(C19394)

Conversions

Conversions Part 1

Format	Color
Hex	C19394
RGB	193, 147, 148
RGB Percent	76%, 58%, 58%
CMY	0.2431, 0.4235, 0.4196
CMYK	0.00, 0.24, 0.23, 0.24
HSL	359°, 27%, 67%
HSV	359°, 24%, 76%
XYZ	37.7713, 34.3430, 32.6551
YIQ	160.8680, 27.0950, 10.0630

Conversions

Conversions Part 2

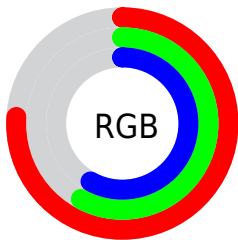
Format	Color
RYB	193, 147, 148
Decimal	12686228
CIELab	65.23, 17.46, 6.19
CIElCh	65, 18.519, 19.511
Yxy	34.3430, 0.3605, 0.3278
Android (android.graphics.Color)	4290876308 (0xFFC19394)
YUV	160.8680, -6.3439, 28.1798
Hunter-Lab	58.6029, 12.4935, 7.9841

Details

The Hex color **C19394** is a light color, and the websafe version is hex **CC9999**. A complement of this color would be **93C1C0**, and the grayscale version is **A1A1A1**.

A 20% lighter version of the original color is **FAC9CA**, and **8B6061** is the 20% darker color. If you saturate the color by 10%, you get **C18081**, and if you desaturate by 10%, it is **C1A6A7**.

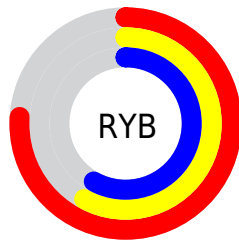
Distribution



Red (76%)

Green (58%)

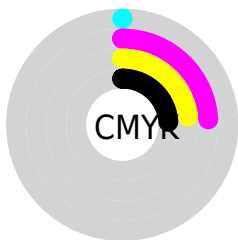
Blue (58%)



Red (76%)

Yellow (58%)

Blue (58%)

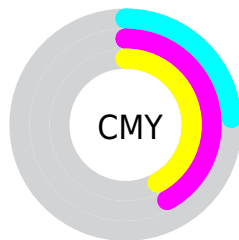


Cyan (0%)

Magenta (24%)

Yellow (23%)

Black (24%)



Cyan (24%)

Magenta (42%)

Yellow (42%)

Brightness & Saturation Gradients

These gradients show how the Hex color C19394 changes by changing the brightness by 10 percent. The first figure shows a shift by +10% for each color and the second figure -10%.

Similar to the brightness gradients but the following saturation gradients show a change of the Hex color C19394 by changing the saturation by 10% instead.

 C19394

 C19394

FFFFFF

 A5797A

 FAC9CA

 8B6061

 FFE5E6

 70484A

 573133

 3F1C1E

 290505

 000000

 C19394

 C19394

 C18081

 C1A6A7

 C16C6E

 C1BABA

 C1595B

 C1CDCD

 C14648

 C1E0E0

 C13336

 C1F4F2

 C11F23

 C1FFFF

 C10C10

 C10004

Harmonies

Analogous

The Analogous color harmony consists of three colors that are next to each other on the color wheel.



BC93A5



C19394



BD9686

Triad

The Triadic color harmony groups three colors that are evenly spaced from another and form a triangle on the color wheel.



C19394



8DA588



84A2BE

Complementary

The Complementary color scheme is a pair of colors which are on the opposite of each other on the color wheel.



C19394



93C1C0

Split Complementary

Split-complementary colors differ from the complementary color scheme. The scheme consists of three colors, the original color and two neighbors of the complement color.



74A6B7



C19394



7CA898

Square

The Square scheme is like the rectangle color scheme, but the four colors are evenly spaced on the color wheel.



C19394



A0A17F



72A8A9



9A9CBD

Rectangle

The Rectangle color scheme consists of four colors that form a rectangle on the color wheel.



C19394



B59980



72A8A9



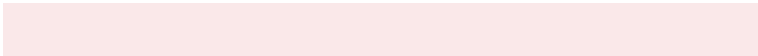
7EA3BD

Sweetspot

The Sweet Spot groups the original color and five complimentary colors.



C19394



FAE8E9



BF93C1



7D7373



FCFCFC



7D7D7D

Same Dimension

The Same Dimension uses a secret algorithm to generate beautiful new colors.



C19394



FAB1B3



C1A893



615757



A10003



210001

Inverse Universe

The Inverse Universe completely reimagines the original color for something new.



C19394



FAB1B3



93ACC1



615757



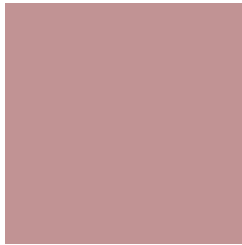
A10003



210001

Previews

White Background



This preview shows how the Hex color C19394 looks on a white background.

Color Contrast Check

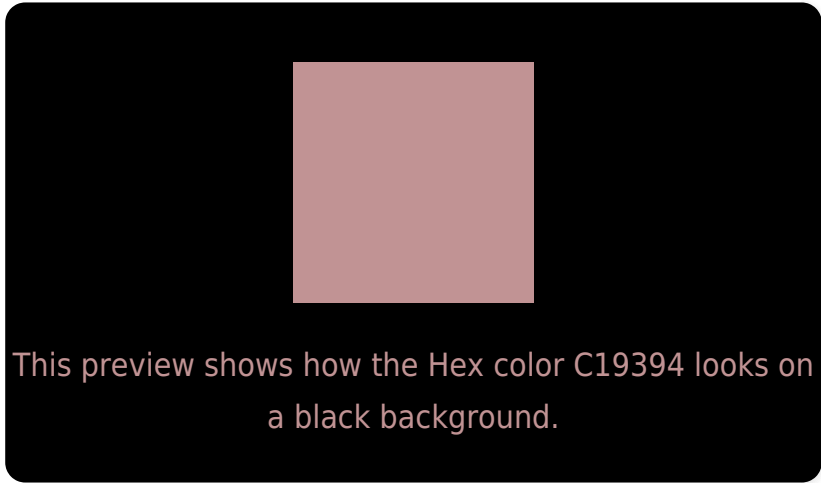
Large Text (above 18pt) WCAG AA × Fail

Any Text WCAG AA × Fail

Large Text (above 18pt) WCAG AAA × Fail

Any Text WCAG AAA × Fail

Black Background



Color Contrast Check

Large Text (above 18pt) WCAG AA ✓ Pass

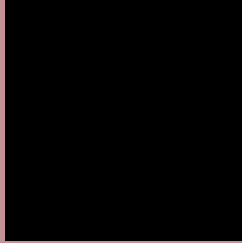
Any Text WCAG AA ✓ Pass

Large Text (above 18pt) WCAG AAA ✓ Pass

Any Text WCAG AAA ✓ Pass

If you want to check with other color combinations, try the [Color Contrast Checker](#).

Hex C19394 Background



This preview shows how black text looks on a background with the Hex color C19394.



This preview shows how white text looks on a background with the Hex color C19394.

Color Blindness Simulation

Color vision deficiency is a very complex topic, and I could not describe the different causes any better than Wikipedia does, so if you want to learn more, you should check out their [article about color blindness](#).


Dichromacy



Original Color
C19394

Protanopia
A29E9A

Deuteranopia
B29993



Tritanopia
C2929D

Trichromacy



Original Color
C19394

Protanomaly
AD9A98

Deuteranomaly
B79793

Tritanomaly
C2929A

Monochromacy



Original Color
C19394

Achromatopsia
A1A1A1

Achromatomaly
AD9C9C

CSS Examples

Text

The CSS property to change the color of the text to Hex C19394 is called "color". The color property can be set on classes, ids or directly on the HTML element.

This example shows how text in the color #C19394 looks like.

```
.text, #text, p{  
    color:#C19394  
}
```

If you want to add a text shadow in that color use the text-shadow property, you can generate a text shadow directly with our [CSS Text Shadow Generator](#).

Here you see how black text with a 4 pixel #C19394 colored shadow looks like.

```
.shadow{ text-shadow: 4px 4px 2px #C19394
}
```

Border

The CSS property to change the border of an element to Hex C19394 is called "border". The border property can be set on classes, ids or directly on the HTML element.

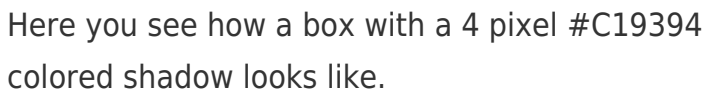
This example shows the color as border, it can be applied via the CSS property "border" or "border-color".

```
.border, #border, table{ border:4px solid
#C19394 }
```

If only the border color should be changed use the property `border-color`.

```
.border{ border-color:#C19394 }
```

If you want to add a box shadow in that color use:



Here you see how a box with a 4 pixel #C19394 colored shadow looks like.

```
.boxshadow{ -moz-box-shadow:4px 4px 4px  
4px #C19394; -webkit-box-shadow:4px 4px  
4px 4px #C19394; box-shadow:4px 4px 4px  
4px #C19394 }
```

Background

The CSS property to change the background color of an element to Hex C19394 is called "background". The background property can be set on classes, ids or directly on the HTML element.

```
.background, #background, body{  
background:#C19394 }
```

If only the background color should be changed can be used:

```
.background{ background-color:#C19394 }
```

This example shows the color as background, it is applied via the CSS property "background".

To optimize and compress your CSS code, you can use our [online CSS compressor and optimizer](#) based on csstidy. If you want to create a linear or radial gradient as background or border, check our [CSS Gradient Generator](#).

Hey! You found this booklet interesting? Support Converting Colors with the new Membership Option!

The pro membership hides all ads, plus gives you double the colors in the color bucket, and more awesome pro features!

[Learn more, Memberships starting at \\$2.50/m!](#)

**Follow me
on Twitter!**

@ConvertingColor