

Converting Colors

Hex(C19863)

Have a look what the booklet for
Hex(C19863) contains.

Hex(C19863)	3
<i>Conversions</i>	4
<i>Details</i>	6
<i>Harmonies</i>	11
<i>Previews</i>	23
<i>Color Blindness Simulation</i>	26
<i>CSS Examples</i>	29

Color

Hex(C19863)

Conversions

Conversions Part 1

Format	Color
Hex	C19863
RGB	193, 152, 99
RGB Percent	76%, 60%, 39%
CMY	0.2431, 0.4039, 0.6118
CMYK	0.00, 0.21, 0.49, 0.24
HSL	34°, 43%, 57%
HSV	34°, 49%, 76%
XYZ	35.4727, 34.6948, 16.6315
YIQ	158.2170, 41.4490, -7.7910

Conversions

Conversions Part 2

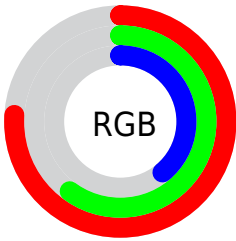
Format	Color
RYB	172, 193, 99
Decimal	12687459
CIELab	65.51, 8.65, 33.62
CIELCh	66, 34.719, 75.572
Yxy	34.6948, 0.4087, 0.3997
Android (android.graphics.Color)	4290877539 (0xFFC19863)
YUV	158.2170, -29.1940, 30.5047
Hunter-Lab	58.9023, 4.4190, 24.4906

Details

The Hex color **C19863** is a light color, and the websafe version is hex **CC9966**. A complement of this color would be **638CC1**, and the grayscale version is **9E9E9E**.

A 20% lighter version of the original color is **FBCE97**, and **896533** is the 20% darker color. If you saturate the color by 10%, you get **C19050**, and if you desaturate by 10%, it is **C1A076**.

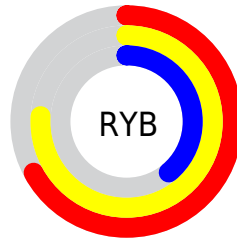
Distribution



Red (76%)

Green (60%)

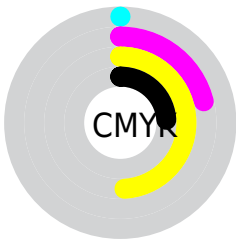
Blue (39%)



Red (67%)

Yellow (76%)

Blue (39%)

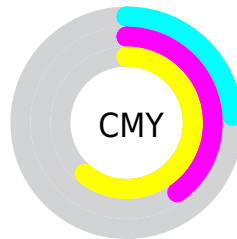


Cyan (0%)

Magenta (21%)

Yellow (49%)

Black (24%)



Cyan (24%)

Magenta (40%)

Yellow (61%)

Brightness & Saturation Gradients

These gradients show how the Hex color C19863 changes by changing the brightness by 10 percent. The first figure shows a shift by +10% for each color and the second figure -10%.

Similar to the brightness gradients but the following saturation gradients show a change of the Hex color C19863 by changing the saturation by 10% instead.

 C19863

 C19863

FFFFFF

 A57E4A

 FBCE97

 896533

 FFEAB2

 6E4D1C

 FFFFFCD

 543704

 FFFFEA

 3B2100

 220C00

 000000

 C19863

 C19863

 C19050

 C1A076

 C1873C

 C1A98A

 C17F29

 C1B19D

 C17616

 C1BAB0

 C16E02

 C1C2C4

 C16D00

 C1CBD7

 C1D3EA

 C1DBFD

 C1E4FF

Harmonies

Analogous

The Analogous color harmony consists of three colors that are next to each other on the color wheel.



D58E74



C19863



A4A262

Triad

The Triadic color harmony groups three colors that are evenly spaced from another and form a triangle on the color wheel.



C19863



30B0AF



B791CB

Complementary

The Complementary color scheme is a pair of colors which are on the opposite of each other on the color wheel.



C19863



638CC1

Split Complementary

Split-complementary colors differ from the complementary color scheme. The scheme consists of three colors, the original color and two neighbors of the complement color.



8D9DDB



C19863



29ADCB

Square

The Square scheme is like the rectangle color scheme, but the four colors are evenly spaced on the color wheel.



C19863



5AAF8F



59A7DB



D289AF

Rectangle

The Rectangle color scheme consists of four colors that form a rectangle on the color wheel.



C19863



8DA86B



59A7DB



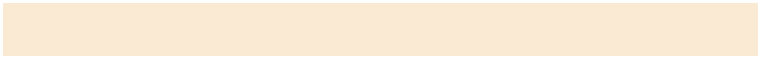
AA95D2

Sweetspot

The Sweet Spot groups the original color and five complimentary colors.



C19863



FAEAD4



C1638D



7D7366



FCFCFC



7D7D7D

Same Dimension

The Same Dimension uses a secret algorithm to generate beautiful new colors.



C19863



FABB69



BCC163



615D57



A15B00



211300

Inverse Universe

The Inverse Universe completely reimagines the original color for something new.



638CC1



69A8FA



6863C1



575B61



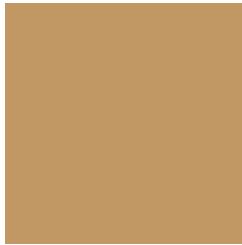
0046A1



000E21

Previews

White Background



This preview shows how the Hex color C19863 looks on a white background.

Color Contrast Check

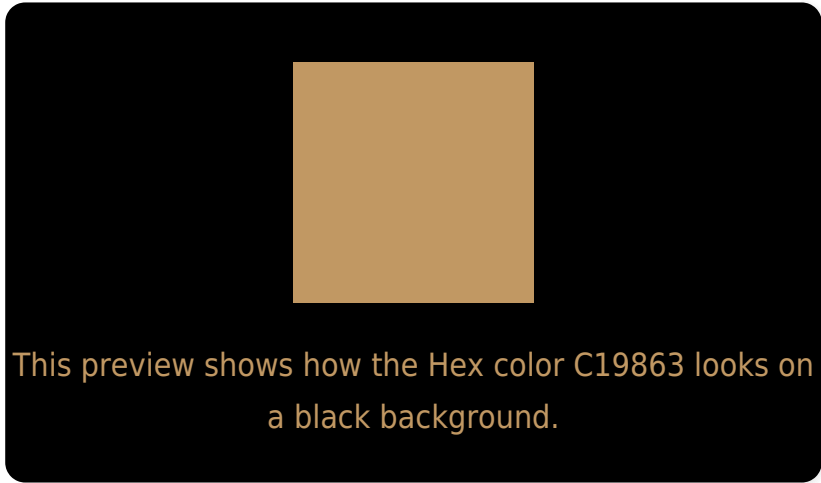
Large Text (above 18pt) WCAG AA × Fail

Any Text WCAG AA × Fail

Large Text (above 18pt) WCAG AAA × Fail

Any Text WCAG AAA × Fail

Black Background



Color Contrast Check

Large Text (above 18pt) WCAG AA ✓ Pass

Any Text WCAG AA ✓ Pass

Large Text (above 18pt) WCAG AAA ✓ Pass

Any Text WCAG AAA ✓ Pass

If you want to check with other color combinations, try the [Color Contrast Checker](#).

Hex C19863 Background



This preview shows how black text looks on a background with the Hex color C19863.



This preview shows how white text looks on a background with the Hex color C19863.

Color Blindness Simulation

Color vision deficiency is a very complex topic, and I could not describe the different causes any better than Wikipedia does, so if you want to learn more, you should check out their [article about color blindness](#).


Dichromacy



Original Color
C19863

Protanopia
AD9F66

Deuteranopia
C19863



Tritanopia
C6919C

Trichromacy



Monochromacy



CSS Examples

Text

The CSS property to change the color of the text to Hex C19863 is called "color". The color property can be set on classes, ids or directly on the HTML element.

This example shows how text in the color #C19863 looks like.

```
.text, #text, p{  
    color:#C19863  
}
```

If you want to add a text shadow in that color use the text-shadow property, you can generate a text shadow directly with our [CSS Text Shadow Generator](#).

Here you see how black text with a 4 pixel #C19863 colored shadow looks like.

```
.shadow{ text-shadow: 4px 4px 2px #C19863
}
```

Border

The CSS property to change the border of an element to Hex C19863 is called "border". The border property can be set on classes, ids or directly on the HTML element.

This example shows the color as border, it can be applied via the CSS property "border" or "border-color".

```
.border, #border, table{ border:4px solid
#C19863 }
```

If only the border color should be changed use the property `border-color`.

```
.border{ border-color:#C19863 }
```

If you want to add a box shadow in that color use:

Here you see how a box with a 4 pixel #C19863 colored shadow looks like.

```
.boxshadow{ -moz-box-shadow:4px 4px 4px  
4px #C19863; -webkit-box-shadow:4px 4px  
4px 4px #C19863; box-shadow:4px 4px 4px  
4px #C19863 }
```

Background

The CSS property to change the background color of an element to Hex C19863 is called "background". The background property can be set on classes, ids or directly on the HTML element.

```
.background, #background, body{  
background:#C19863 }
```

If only the background color should be changed can be used:

```
.background{ background-color:#C19863 }
```

This example shows the color as background, it is applied via the CSS property "background".

To optimize and compress your CSS code, you can use our [online CSS compressor and optimizer](#) based on csstidy. If you want to create a linear or radial gradient as background or border, check our [CSS Gradient Generator](#).

Hey! You found this booklet interesting? Support Converting Colors with the new Membership Option!

The pro membership hides all ads, plus gives you double the colors in the color bucket, and more awesome pro features!

[Learn more, Memberships starting at \\$2.50/m!](#)

**Follow me
on Twitter!**

@ConvertingColor