

Converting Colors

Hex(C1988F)

Have a look what the booklet for
Hex(C1988F) contains.

Hex(C1988F)	3
<i>Conversions</i>	4
<i>Details</i>	6
<i>Harmonies</i>	11
<i>Previews</i>	23
<i>Color Blindness Simulation</i>	26
<i>CSS Examples</i>	29

Color

Hex(C1988F)

Conversions

Conversions Part 1

Format	Color
Hex	C1988F
RGB	193, 152, 143
RGB Percent	76%, 60%, 56%
CMY	0.2431, 0.4039, 0.4392
CMYK	0.00, 0.21, 0.26, 0.24
HSL	11°, 29%, 66%
HSV	11°, 26%, 76%
XYZ	38.1785, 35.7771, 30.8800
YIQ	163.2330, 27.3250, 5.8930

Conversions

Conversions Part 2

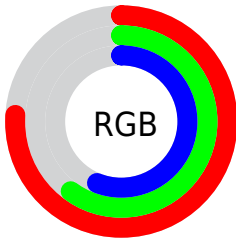
Format	Color
RYB	193, 154, 143
Decimal	12687503
CIELab	66.35, 13.96, 10.58
CIELCh	66, 17.519, 37.147
Yxy	35.7771, 0.3642, 0.3413
Android (android.graphics.Color)	4290877583 (0xFFC1988F)
YUV	163.2330, -9.9749, 26.1057
Hunter-Lab	59.8140, 9.2598, 11.2602

Details

The Hex color **C1988F** is a light color, and the websafe version is hex **CC9999**. A complement of this color would be **8FB8C1**, and the grayscale version is **A3A3A3**.

A 20% lighter version of the original color is **FACEC5**, and **8B655D** is the 20% darker color. If you saturate the color by 10%, you get **C1887C**, and if you desaturate by 10%, it is **C1A8A2**.

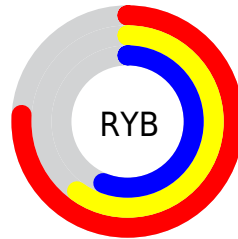
Distribution



Red (76%)

Green (60%)

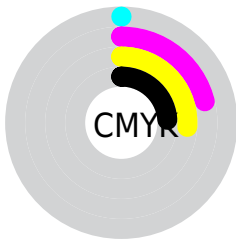
Blue (56%)



Red (76%)

Yellow (60%)

Blue (56%)

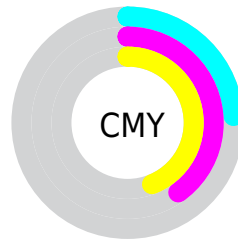


Cyan (0%)

Magenta (21%)

Yellow (26%)

Black (24%)



Cyan (24%)

Magenta (40%)

Yellow (44%)

Brightness & Saturation Gradients

These gradients show how the Hex color C1988F changes by changing the brightness by 10 percent. The first figure shows a shift by +10% for each color and the second figure -10%.

Similar to the brightness gradients but the following saturation gradients show a change of the Hex color C1988F by changing the saturation by 10% instead.

 C1988F

FFFFFF

 FACEC5

 FFEBE1

FFFFFFD

 C1988F

 C1887C

 C1988F

 A57E75

 8B655D

 704D45

 57362F

 3F201A

 290B00

 000000

 C1988F

 C1A8A2

 C17868

 C1B8B6

 C16955

 C1C7C9

 C15942

 C1D7DC

 C1492F

 C1E7F0

 C1391B

 C1F7FF

 C12908

 C1FFFF

 C12300

Harmonies

Analogous

The Analogous color harmony consists of three colors that are next to each other on the color wheel.



C2969E



C1988F



B89C85

Triad

The Triadic color harmony groups three colors that are evenly spaced from another and form a triangle on the color wheel.



C1988F



87A995



94A1C0

Complementary

The Complementary color scheme is a pair of colors which are on the opposite of each other on the color wheel.



C1988F



8FB8C1

Split Complementary

Split-complementary colors differ from the complementary color scheme. The scheme consists of three colors, the original color and two neighbors of the complement color.



82A6BE



C1988F



7AABA5

Square

The Square scheme is like the rectangle color scheme, but the four colors are evenly spaced on the color wheel.



C1988F



98A688



77A9B4



A99CBA

Rectangle

The Rectangle color scheme consists of four colors that form a rectangle on the color wheel.



C1988F



AFA082



77A9B4



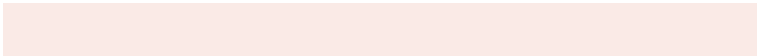
8EA3C0

Sweetspot

The Sweet Spot groups the original color and five complimentary colors.



C1988F



FAEAE6



C18FB9



7D7370



FCFCFC



7D7D7D

Same Dimension

The Same Dimension uses a secret algorithm to generate beautiful new colors.



C1988F



FABAAC



C1B08F



615957



A11D00



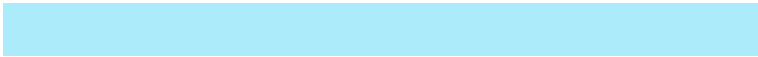
210600

Inverse Universe

The Inverse Universe completely reimagines the original color for something new.



8FB8C1



ACECFA



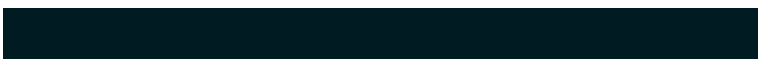
8FA0C1



575F61



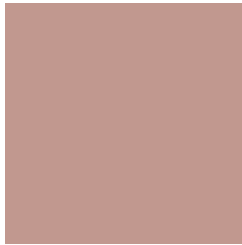
0084A1



001B21

Previews

White Background



This preview shows how the Hex color C1988F looks on a white background.

Color Contrast Check

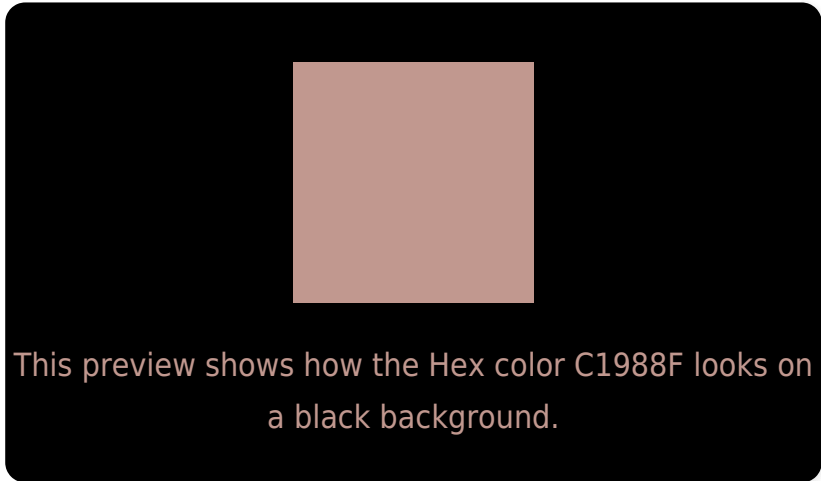
Large Text (above 18pt) WCAG AA × Fail

Any Text WCAG AA × Fail

Large Text (above 18pt) WCAG AAA × Fail

Any Text WCAG AAA × Fail

Black Background



Color Contrast Check

Large Text (above 18pt) WCAG AA ✓ Pass

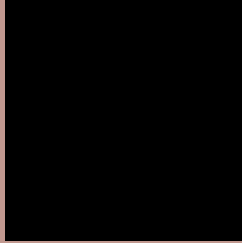
Any Text WCAG AA ✓ Pass

Large Text (above 18pt) WCAG AAA ✓ Pass

Any Text WCAG AAA ✓ Pass

If you want to check with other color combinations, try the [Color Contrast Checker](#).

Hex C1988F Background



This preview shows how black text looks on a background with the Hex color C1988F.



This preview shows how white text looks on a background with the Hex color C1988F.

Color Blindness Simulation

Color vision deficiency is a very complex topic, and I could not describe the different causes any better than Wikipedia does, so if you want to learn more, you should check out their [article about color blindness](#).

Dichromacy





Tritanopia
C395A1

Trichromacy



Original Color
C1988F

Protanomaly
B19E92

Deuteranomaly
BB9B8E

Tritanomaly
C2969A

Monochromacy



Original Color
C1988F

Achromatopsia
A3A3A3

Achromatomaly
AE9F9C

CSS Examples

Text

The CSS property to change the color of the text to Hex C1988F is called "color". The color property can be set on classes, ids or directly on the HTML element.

This example shows how text in the color #C1988F looks like.

```
.text, #text, p{  
    color:#C1988F  
}
```

If you want to add a text shadow in that color use the text-shadow property, you can generate a text shadow directly with our [CSS Text Shadow Generator](#).

Here you see how black text with a 4 pixel #C1988F colored shadow looks like.

```
.shadow{ text-shadow: 4px 4px 2px #C1988F
}
```

Border

The CSS property to change the border of an element to Hex C1988F is called "border". The border property can be set on classes, ids or directly on the HTML element.

This example shows the color as border, it can be applied via the CSS property "border" or "border-color".

```
.border, #border, table{ border:4px solid
#C1988F }
```

If only the border color should be changed use the property `border-color`.

```
.border{ border-color:#C1988F }
```

If you want to add a box shadow in that color use:

Here you see how a box with a 4 pixel #C1988F colored shadow looks like.

```
.boxshadow{ -moz-box-shadow:4px 4px 4px  
4px #C1988F; -webkit-box-shadow:4px 4px  
4px 4px #C1988F; box-shadow:4px 4px 4px  
4px #C1988F }
```

Background

The CSS property to change the background color of an element to Hex C1988F is called "background". The background property can be set on classes, ids or directly on the HTML element.

```
.background, #background, body{  
background:#C1988F }
```

If only the background color should be changed can be used:

```
.background{ background-color:#C1988F }
```

This example shows the color as background, it is applied via the CSS property "background".

To optimize and compress your CSS code, you can use our [online CSS compressor and optimizer](#) based on csstidy. If you want to create a linear or radial gradient as background or border, check our [CSS Gradient Generator](#).

Hey! You found this booklet interesting? Support Converting Colors with the new Membership Option!

The pro membership hides all ads, plus gives you double the colors in the color bucket, and more awesome pro features!

[Learn more, Memberships starting at \\$2.50/m!](#)

**Follow me
on Twitter!**

@ConvertingColor