

# Converting Colors

Hex(C19995)

Have a look what the booklet for  
Hex(C19995) contains.

<b>Hex(C19995)</b> .....	3
<b><i>Conversions</i></b> .....	4
<b><i>Details</i></b> .....	6
<b><i>Harmonies</i></b> .....	11
<b><i>Previews</i></b> .....	23
<b><i>Color Blindness Simulation</i></b> .....	26
<b><i>CSS Examples</i></b> .....	29

# **Color**

**Hex(C19995)**

# Conversions

## Conversions Part 1

Format	Color
Hex	C19995
RGB	193, 153, 149
RGB Percent	76%, 60%, 58%
CMY	0.2431, 0.4000, 0.4157
CMYK	0.00, 0.21, 0.23, 0.24
HSL	5°, 26%, 67%
HSV	5°, 23%, 76%
XYZ	38.8084, 36.2898, 33.3930
YIQ	164.5040, 25.1240, 7.2360

# Conversions

## Conversions Part 2

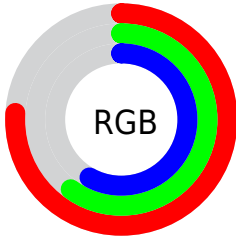
<b>Format</b>	<b>Color</b>
<b>R<sub>YB</sub></b>	193, 153, 149
Decimal	12687765
CIE <sub>Lab</sub>	66.74, 14.29, 7.78
CIE <sub>LCh</sub>	67, 16.276, 28.565
Yxy	36.2898, 0.3577, 0.3345
Android (android.graphics.Color)	4290877845 (0xFFC19995)
YUV	164.5040, -7.6435, 24.9910
Hunter-Lab	60.2411, 9.5710, 9.3029

# Details

The Hex color **C19995** is a light color, and the websafe version is hex **CC9999**. A complement of this color would be **95BDC1**, and the grayscale version is **A5A5A5**.

A 20% lighter version of the original color is **FACFCB**, and **8B6662** is the 20% darker color. If you saturate the color by 10%, you get **C18782**, and if you desaturate by 10%, it is **C1ABA8**.

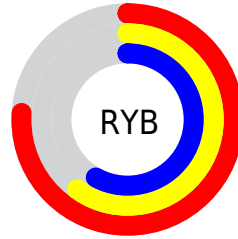
# Distribution



Red (76%)

Green (60%)

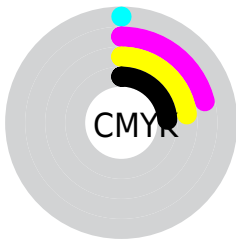
Blue (58%)



Red (76%)

Yellow (60%)

Blue (58%)

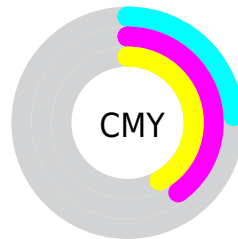


Cyan (0%)

Magenta (21%)

Yellow (23%)

Black (24%)



Cyan (24%)

Magenta (40%)

Yellow (42%)

# Brightness & Saturation Gradients

These gradients show how the Hex color C19995 changes by changing the brightness by 10 percent. The first figure shows a shift by +10% for each color and the second figure -10%.

Similar to the brightness gradients but the following saturation gradients show a change of the Hex color C19995 by changing the saturation by 10% instead.



 C19995

 C19995

FFFFFF

 A57F7B

 FACFCB

 8B6662

 FFECE7

 714E4B

 583734

 3F211F

 290C06

 010000

 000000

 C19995

 C19995

 C18782

 C1ABA8

 C1766E

 C1BCBC

 C1645B

 C1CECF

 C15348

 C1DFE2

 C14135

 C1F1F6

 C13021

 C1FFFF

 C11E0E

 C11200

# Harmonies

## Analogous

The Analogous color harmony consists of three colors that are next to each other on the color wheel.



BF98A4



C19995



BB9C8A

# Triad

The Triadic color harmony groups three colors that are evenly spaced from another and form a triangle on the color wheel.



C19995



8EA993



91A4BF

# Complementary

The Complementary color scheme is a pair of colors which are on the opposite of each other on the color wheel.



C19995



95BDC1

# Split Complementary

Split-complementary colors differ from the complementary color scheme. The scheme consists of three colors, the original color and two neighbors of the complement color.



82A8BB



C19995



81ABA1

# Square

The Square scheme is like the rectangle color scheme, but the four colors are evenly spaced on the color wheel.



C19995



9FA689



7BAAB0



A49FBC

# Rectangle

The Rectangle color scheme consists of four colors that form a rectangle on the color wheel.



C19995



B39F86



7BAAB0



8BA5BF

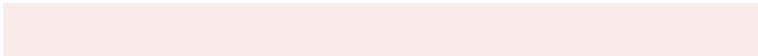


# Sweetspot

The Sweet Spot groups the original color and five complimentary colors.



C19995



FAEAE8



C195BD



7D7473



FCFCFC



7D7D7D



# Same Dimension

The Same Dimension uses a secret algorithm to generate beautiful new colors.



C19995



FABDB6



C1AF95



615857



A10F00



210300



# Inverse Universe

The Inverse Universe completely reimagines the original color for something new.



95BDC1



B6F4FA



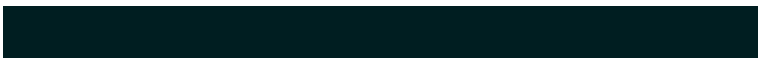
95A7C1



576061



0092A1

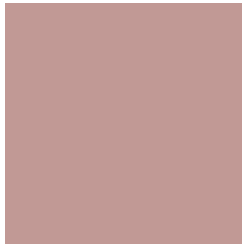


001E21



# Previews

## White Background



This preview shows how the Hex color C19995 looks on a white background.

## Color Contrast Check

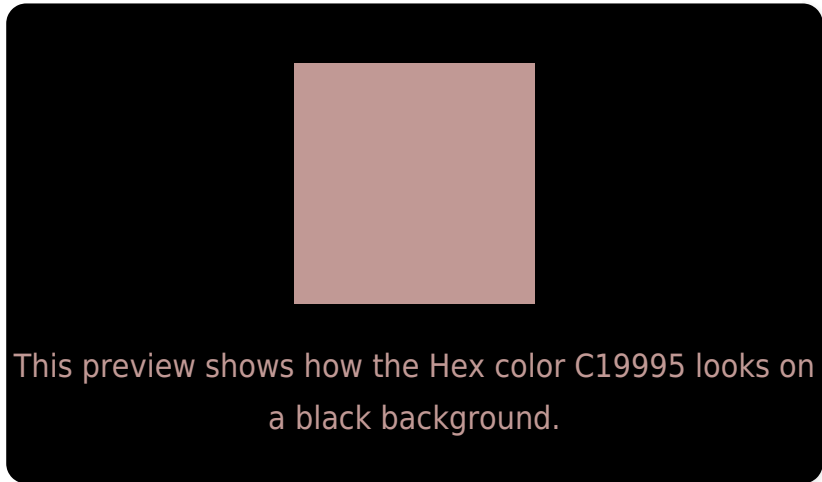
Large Text (above 18pt) WCAG AA × Fail

Any Text WCAG AA × Fail

Large Text (above 18pt) WCAG AAA × Fail

Any Text WCAG AAA × Fail

# Black Background



## Color Contrast Check

Large Text (above 18pt) WCAG AA ✓ Pass

Any Text WCAG AA ✓ Pass

Large Text (above 18pt) WCAG AAA ✓ Pass

Any Text WCAG AAA ✓ Pass

If you want to check with other color combinations, try the [Color Contrast Checker](#).



## Hex C19995 Background



This preview shows how black text looks on a background with the Hex color C19995.



This preview shows how white text looks on a background with the Hex color C19995.

# Color Blindness Simulation

Color vision deficiency is a very complex topic, and I could not describe the different causes any better than Wikipedia does, so if you want to learn more, you should check out their [article about color blindness](#).

## Dichromacy



**Original Color**  
C19995

**Protanopia**  
A8A29A

**Deuteranopia**  
B89D94



**Tritanopia**  
C397A3

# Trichromacy



**Original Color**  
C19995

**Protanomaly**  
B19F98

**Deuteranomaly**  
BB9C94

**Tritanomaly**  
C2989E

# Monochromacy



**Original Color**  
C19995

**Achromatopsia**  
A5A5A5

**Achromatomaly**  
AFA19F

# CSS Examples

## Text

The CSS property to change the color of the text to Hex C19995 is called "color". The color property can be set on classes, ids or directly on the HTML element.

This example shows how text in the color #C19995 looks like.

```
.text, #text, p{  
    color:#C19995  
}
```

If you want to add a text shadow in that color use the text-shadow property, you can generate a text shadow directly with our [CSS Text Shadow Generator](#).

Here you see how black text with a 4 pixel #C19995 colored shadow looks like.

```
.shadow{ text-shadow: 4px 4px 2px #C19995
}
```

## Border

The CSS property to change the border of an element to Hex C19995 is called "border". The border property can be set on classes, ids or directly on the HTML element.

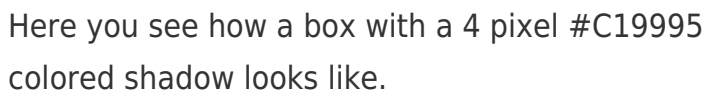
This example shows the color as border, it can be applied via the CSS property "border" or "border-color".

```
.border, #border, table{ border:4px solid
#C19995 }
```

If only the border color should be changed use the property `border-color`.

```
.border{ border-color:#C19995 }
```

If you want to add a box shadow in that color use:



Here you see how a box with a 4 pixel #C19995 colored shadow looks like.

```
.boxshadow{ -moz-box-shadow:4px 4px 4px  
4px #C19995; -webkit-box-shadow:4px 4px  
4px 4px #C19995; box-shadow:4px 4px 4px  
4px #C19995 }
```

# Background

The CSS property to change the background color of an element to Hex C19995 is called "background". The background property can be set on classes, ids or directly on the HTML element.

```
.background, #background, body{  
background:#C19995 }
```

If only the background color should be changed can be used:

```
.background{ background-color:#C19995 }
```

This example shows the color as background, it is applied via the CSS property "background".

To optimize and compress your CSS code, you can use our [online CSS compressor and optimizer](#) based on csstidy. If you want to create a linear or radial gradient as background or border, check our [CSS Gradient Generator](#).



Hey! You found this booklet interesting? Support Converting Colors with the new Membership Option!

The pro membership hides all ads, plus gives you double the colors in the color bucket, and more awesome pro features!

**[Learn more, Memberships starting at \\$2.50/m!](#)**

**Follow me  
on Twitter!**

@ConvertingColor