

Converting Colors

Hex(C19C9A)

Have a look what the booklet for
Hex(C19C9A) contains.

Hex(C19C9A)	3
<i>Conversions</i>	4
<i>Details</i>	6
<i>Harmonies</i>	11
<i>Previews</i>	23
<i>Color Blindness Simulation</i>	26
<i>CSS Examples</i>	29

Color

Hex(C19C9A)

Conversions

Conversions Part 1

Format	Color
Hex	C19C9A
RGB	193, 156, 154
RGB Percent	76%, 61%, 60%
CMY	0.2431, 0.3882, 0.3961
CMYK	0.00, 0.19, 0.20, 0.24
HSL	3°, 24%, 68%
HSV	3°, 20%, 76%
XYZ	39.7135, 37.4475, 35.7068
YIQ	166.8350, 22.6940, 7.2220

Conversions

Conversions Part 2

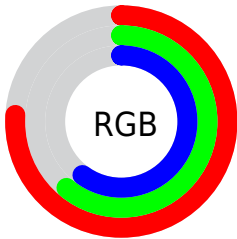
Format	Color
R_{YB}	193, 156, 154
Decimal	12688538
CIE _{Lab}	67.61, 13.40, 6.24
CIE _{LCh}	68, 14.784, 24.956
Yxy	37.4475, 0.3519, 0.3318
Android (android.graphics.Color)	4290878618 (0xFFC19C9A)
YUV	166.8350, -6.3277, 22.9467
Hunter-Lab	61.1943, 8.7517, 8.2404

Details

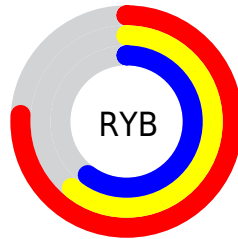
The Hex color **C19C9A** is a light color, and the websafe version is hex **CC9999**. A complement of this color would be **9ABFC1**, and the grayscale version is **A7A7A7**.

A 20% lighter version of the original color is **FAD3D0**, and **8B6967** is the 20% darker color. If you saturate the color by 10%, you get **C18A87**, and if you desaturate by 10%, it is **C1AEAD**.

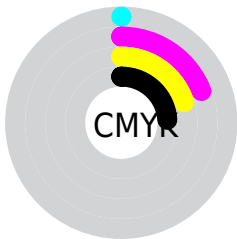
Distribution



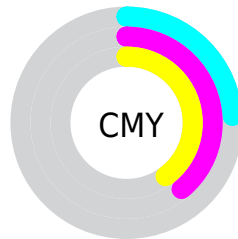
- Red (76%)
- Green (61%)
- Blue (60%)



- Red (76%)
- Yellow (61%)
- Blue (60%)



- Cyan (0%)
- Magenta (19%)
- Yellow (20%)
- Black (24%)



- Cyan (24%)
- Magenta (39%)
- Yellow (40%)

Brightness & Saturation Gradients

These gradients show how the Hex color C19C9A changes by changing the brightness by 10 percent. The first figure shows a shift by +10% for each color and the second figure -10%.

Similar to the brightness gradients but the following saturation gradients show a change of the Hex color C19C9A by changing the saturation by 10% instead.

 C19C9A

 C19C9A


FFFFFF

 A68280

 FAD3D0

 8B6967

 FFEFED

 71504F

 583938

 402323

 290F0D

 080000

 000000

 C19C9A

 C19C9A

 C18A87

 C1AEAD

 C17773

 C1C1C1

 C16560

 C1D3D4

 C1534D

 C1E5E7

 C14039

 C1F8FB

 C12E26

 C1FFFF

 C11C13

 C10A00

Harmonies

Analogous

The Analogous color harmony consists of three colors that are next to each other on the color wheel.



BE9CA7



C19C9A



BC9F8F

Triad

The Triadic color harmony groups three colors that are evenly spaced from another and form a triangle on the color wheel.



C19C9A



94AB95



93A7BF

Complementary

The Complementary color scheme is a pair of colors which are on the opposite of each other on the color wheel.



C19C9A



9ABFC1

Split Complementary

Split-complementary colors differ from the complementary color scheme. The scheme consists of three colors, the original color and two neighbors of the complement color.



86AABA



C19C9A



87ACA2

Square

The Square scheme is like the rectangle color scheme, but the four colors are evenly spaced on the color wheel.



C19C9A



A3A78C



82ACAF



A4A2BD

Rectangle

The Rectangle color scheme consists of four colors that form a rectangle on the color wheel.



C19C9A



B6A18B



82ACAF



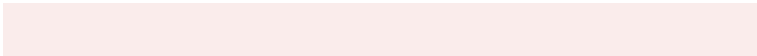
8EA8BE

Sweetspot

The Sweet Spot groups the original color and five complimentary colors.



C19C9A



FAECEB



C19ABF



7D7574



FCFCFC



7D7D7D

Same Dimension

The Same Dimension uses a secret algorithm to generate beautiful new colors.



C19C9A



FAC1BE



C1AF9A



615857



A10800



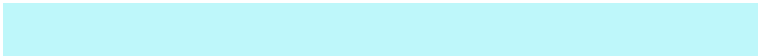
210200

Inverse Universe

The Inverse Universe completely reimagines the original color for something new.



9ABFC1



BEF7FA



9AACC1



576061



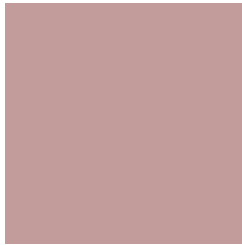
0098A1



001F21

Previews

White Background



This preview shows how the Hex color C19C9A looks on a white background.

Color Contrast Check

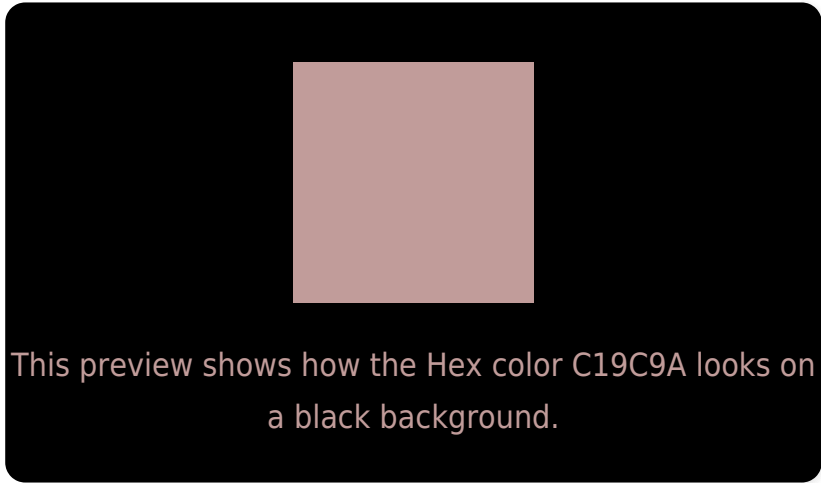
Large Text (above 18pt) WCAG AA × Fail

Any Text WCAG AA × Fail

Large Text (above 18pt) WCAG AAA × Fail

Any Text WCAG AAA × Fail

Black Background



Color Contrast Check

Large Text (above 18pt) WCAG AA ✓ Pass

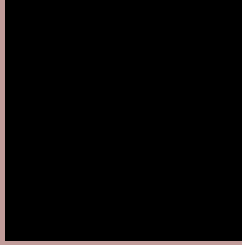
Any Text WCAG AA ✓ Pass

Large Text (above 18pt) WCAG AAA ✓ Pass

Any Text WCAG AAA ✓ Pass

If you want to check with other color combinations, try the [Color Contrast Checker](#).

Hex C19C9A Background



This preview shows how black text looks on a background with the Hex color C19C9A.



This preview shows how white text looks on a background with the Hex color C19C9A.

Color Blindness Simulation

Color vision deficiency is a very complex topic, and I could not describe the different causes any better than Wikipedia does, so if you want to learn more, you should check out their [article about color blindness](#).

Dichromacy



Original Color
C19C9A

Protanopia
A9A49E

Deuteranopia
B99F99



Tritanopia
C29AA6

Trichromacy



Original Color
C19C9A

Protanomaly
B2A19D

Deuteranomaly
BC9E99

Tritanomaly
C29BA2

Monochromacy



Original Color
C19C9A

Achromatopsia
A7A7A7

Achromatomaly
B0A3A2

CSS Examples

Text

The CSS property to change the color of the text to Hex C19C9A is called "color". The color property can be set on classes, ids or directly on the HTML element.

This example shows how text in the color #C19C9A looks like.

```
.text, #text, p{  
    color:#C19C9A  
}
```

If you want to add a text shadow in that color use the text-shadow property, you can generate a text shadow directly with our [CSS Text Shadow Generator](#).

Here you see how black text with a 4 pixel #C19C9A colored shadow looks like.

```
.shadow{ text-shadow: 4px 4px 2px #C19C9A
}
```

Border

The CSS property to change the border of an element to Hex C19C9A is called "border". The border property can be set on classes, ids or directly on the HTML element.

This example shows the color as border, it can be applied via the CSS property "border" or "border-color".

```
.border, #border, table{ border:4px solid
#C19C9A }
```

If only the border color should be changed use the property `border-color`.

```
.border{ border-color:#C19C9A }
```

If you want to add a box shadow in that color use:

Here you see how a box with a 4 pixel #C19C9A colored shadow looks like.

```
.boxshadow{ -moz-box-shadow:4px 4px 4px  
4px #C19C9A; -webkit-box-shadow:4px 4px  
4px 4px #C19C9A; box-shadow:4px 4px 4px  
4px #C19C9A }
```

Background

The CSS property to change the background color of an element to Hex C19C9A is called "background". The background property can be set on classes, ids or directly on the HTML element.

```
.background, #background, body{  
background:#C19C9A }
```

If only the background color should be changed can be used:

```
.background{ background-color:#C19C9A }
```

This example shows the color as background, it is applied via the CSS property "background".

To optimize and compress your CSS code, you can use our [online CSS compressor and optimizer](#) based on csstidy. If you want to create a linear or radial gradient as background or border, check our [CSS Gradient Generator](#).

Hey! You found this booklet interesting? Support Converting Colors with the new Membership Option!

The pro membership hides all ads, plus gives you double the colors in the color bucket, and more awesome pro features!

[Learn more, Memberships starting at \\$2.50/m!](#)

**Follow me
on Twitter!**

@ConvertingColor