

Converting Colors

Hex(C19D9C)

Have a look what the booklet for
Hex(C19D9C) contains.

Hex(C19D9C)	3
<i>Conversions</i>	4
<i>Details</i>	6
<i>Harmonies</i>	11
<i>Previews</i>	23
<i>Color Blindness Simulation</i>	26
<i>CSS Examples</i>	29

Color

Hex(C19D9C)

Conversions

Conversions Part 1

Format	Color
Hex	C19D9C
RGB	193, 157, 156
RGB Percent	76%, 62%, 61%
CMY	0.2431, 0.3843, 0.3882
CMYK	0.00, 0.19, 0.19, 0.24
HSL	2°, 23%, 68%
HSV	2°, 19%, 76%
XYZ	40.0500, 37.8517, 36.6477
YIQ	167.6500, 21.7770, 7.3210

Conversions

Conversions Part 2

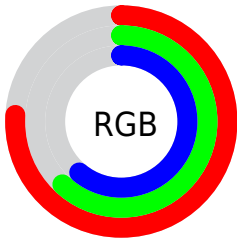
Format	Color
RYB	193, 157, 156
Decimal	12688796
CIELab	67.91, 13.16, 5.55
CIELCh	68, 14.288, 22.873
Yxy	37.8517, 0.3496, 0.3304
Android (android.graphics.Color)	4290878876 (0xFFC19D9C)
YUV	167.6500, -5.7434, 22.2320
Hunter-Lab	61.5237, 8.5314, 7.7494

Details

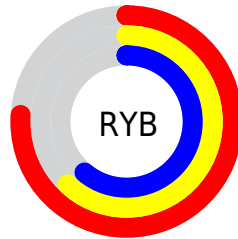
The Hex color **C19D9C** is a light color, and the websafe version is hex **CC9999**. A complement of this color would be **9CC0C1**, and the grayscale version is **A8A8A8**.

A 20% lighter version of the original color is **FAD4D2**, and **8B6A69** is the 20% darker color. If you saturate the color by 10%, you get **C18A89**, and if you desaturate by 10%, it is **C1B0AF**.

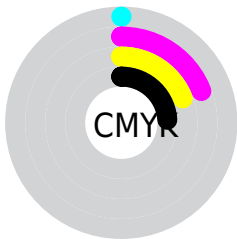
Distribution



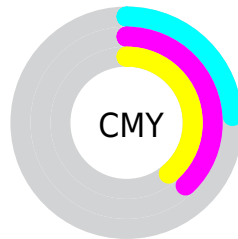
- Red (76%)
- Green (62%)
- Blue (61%)



- Red (76%)
- Yellow (62%)
- Blue (61%)



- Cyan (0%)
- Magenta (19%)
- Yellow (19%)
- Black (24%)



- Cyan (24%)
- Magenta (38%)
- Yellow (39%)

Brightness & Saturation Gradients

These gradients show how the Hex color C19D9C changes by changing the brightness by 10 percent. The first figure shows a shift by +10% for each color and the second figure -10%.

Similar to the brightness gradients but the following saturation gradients show a change of the Hex color C19D9C by changing the saturation by 10% instead.

 C19D9C

FFFFFF


 FAD4D2

 FFF0EF

 C19D9C

 A68382

 8B6A69

 715151

 583A3A

 402424

 29100F

 0B0000

 000000

 C19D9C

 C19D9C

 C18A89

 C1B0AF

 C17775

 C1C3C3

 C16562

 C1D5D6

 C1524F

 C1E8E9

 C13F3B

 C1FBFD

 C12C28

 C1FFFF

 C11A15

 C10702

 C10500

Harmonies

Analogous

The Analogous color harmony consists of three colors that are next to each other on the color wheel.



BE9DA9



C19D9C



BDA091

Triad

The Triadic color harmony groups three colors that are evenly spaced from another and form a triangle on the color wheel.



C19D9C



96AB96



94A8BF

Complementary

The Complementary color scheme is a pair of colors which are on the opposite of each other on the color wheel.



C19D9C



9CC0C1

Split Complementary

Split-complementary colors differ from the complementary color scheme. The scheme consists of three colors, the original color and two neighbors of the complement color.



88ABBA



C19D9C



8AADA2

Square

The Square scheme is like the rectangle color scheme, but the four colors are evenly spaced on the color wheel.



C19D9C



A5A88E



84ADAF



A4A3BD

Rectangle

The Rectangle color scheme consists of four colors that form a rectangle on the color wheel.



C19D9C



B7A28D



84ADAF



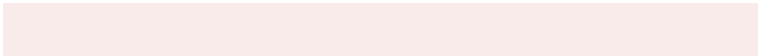
8FA9BE

Sweetspot

The Sweet Spot groups the original color and five complimentary colors.



C19D9C



FAEBEB



C19CC0



7D7474



FCFCFC



7D7D7D

Same Dimension

The Same Dimension uses a secret algorithm to generate beautiful new colors.



C19D9C



FAC2C0



C1AF9C



615757



A10400



210100

Inverse Universe

The Inverse Universe completely reimagines the original color for something new.



9CC0C1



C0F8FA



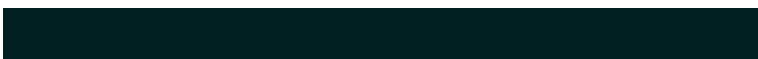
9CAEC1



576161



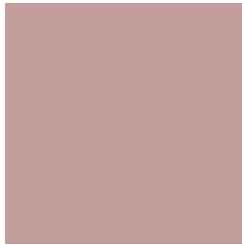
009CA1



002021

Previews

White Background



This preview shows how the Hex color C19D9C looks on a white background.

Color Contrast Check

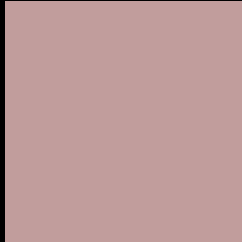
Large Text (above 18pt) WCAG AA × Fail

Any Text WCAG AA × Fail

Large Text (above 18pt) WCAG AAA × Fail

Any Text WCAG AAA × Fail

Black Background



This preview shows how the Hex color C19D9C looks on a black background.

Color Contrast Check

Large Text (above 18pt) WCAG AA ✓ Pass

Any Text WCAG AA ✓ Pass

Large Text (above 18pt) WCAG AAA ✓ Pass

Any Text WCAG AAA ✓ Pass

If you want to check with other color combinations, try the [Color Contrast Checker](#).

Hex C19D9C Background



This preview shows how black text looks on a background with the Hex color C19D9C.



This preview shows how white text looks on a background with the Hex color C19D9C.

Color Blindness Simulation

Color vision deficiency is a very complex topic, and I could not describe the different causes any better than Wikipedia does, so if you want to learn more, you should check out their [article about color blindness](#).

Dichromacy



Original Color
C19D9C

Protanopia
AAA5A0

Deuteranopia
B9A09B



Tritanopia
C29BA7

Trichromacy



Original Color
C19D9C

Protanomaly
B2A29F

Deuteranomaly
BC9F9B

Tritanomaly
C29CA3

Monochromacy



Original Color
C19D9C

Achromatopsia
A8A8A8

Achromatomaly
B1A4A4

CSS Examples

Text

The CSS property to change the color of the text to Hex C19D9C is called "color". The color property can be set on classes, ids or directly on the HTML element.

This example shows how text in the color #C19D9C looks like.

```
.text, #text, p{  
  color:#C19D9C  
}
```

If you want to add a text shadow in that color use the text-shadow property, you can generate a text shadow directly with our [CSS Text Shadow Generator](#).

Here you see how black text with a 4 pixel #C19D9C colored shadow looks like.

```
.shadow{ text-shadow: 4px 4px 2px #C19D9C
}
```

Border

The CSS property to change the border of an element to Hex C19D9C is called "border". The border property can be set on classes, ids or directly on the HTML element.

This example shows the color as border, it can be applied via the CSS property "border" or "border-color".

```
.border, #border, table{ border:4px solid
#C19D9C }
```

If only the border color should be changed use the property `border-color`.

```
.border{ border-color:#C19D9C }
```

If you want to add a box shadow in that color use:

Here you see how a box with a 4 pixel #C19D9C colored shadow looks like.

```
.boxshadow{ -moz-box-shadow:4px 4px 4px  
4px #C19D9C; -webkit-box-shadow:4px 4px  
4px 4px #C19D9C; box-shadow:4px 4px 4px  
4px #C19D9C }
```

Background

The CSS property to change the background color of an element to Hex C19D9C is called "background". The background property can be set on classes, ids or directly on the HTML element.

```
.background, #background, body{  
background:#C19D9C }
```

If only the background color should be changed can be used:

```
.background{ background-color:#C19D9C }
```

This example shows the color as background, it is applied via the CSS property "background".

To optimize and compress your CSS code, you can use our [online CSS compressor and optimizer](#) based on csstidy. If you want to create a linear or radial gradient as background or border, check our [CSS Gradient Generator](#).

Hey! You found this booklet interesting? Support Converting Colors with the new Membership Option!

The pro membership hides all ads, plus gives you double the colors in the color bucket, and more awesome pro features!

[Learn more, Memberships starting at \\$2.50/m!](#)

**Follow me
on Twitter!**

@ConvertingColor