

Converting Colors

Hex(C1A1A1)

Have a look what the booklet for
Hex(C1A1A1) contains.

Hex(C1A1A1)	3
<i>Conversions</i>	4
<i>Details</i>	6
<i>Harmonies</i>	11
<i>Previews</i>	23
<i>Color Blindness Simulation</i>	26
<i>CSS Examples</i>	29

Color

Hex(C1A1A1)

Conversions

Conversions Part 1

Format	Color
Hex	C1A1A1
RGB	193, 161, 161
RGB Percent	76%, 63%, 63%
CMY	0.2431, 0.3686, 0.3686
CMYK	0.00, 0.17, 0.17, 0.24
HSL	0°, 21%, 69%
HSV	0°, 17%, 76%
XYZ	41.1702, 39.4004, 39.1533
YIQ	170.5680, 19.0720, 6.7840

Conversions

Conversions Part 2

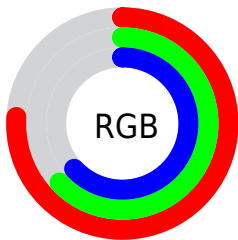
Format	Color
RYB	193, 161, 161
Decimal	12689825
CIELab	69.04, 11.76, 4.40
CIElCh	69, 12.556, 20.511
Yxy	39.4004, 0.3439, 0.3291
Android (android.graphics.Color)	4290879905 (0xFFC1A1A1)
YUV	170.5680, -4.7170, 19.6729
Hunter-Lab	62.7697, 7.2298, 6.9560

Details

The Hex color **C1A1A1** is a light color, and the websafe version is hex **CC9999**. A complement of this color would be **A1C1C1**, and the grayscale version is **ABABAB**.

A 20% lighter version of the original color is **FAD8D8**, and **8B6D6E** is the 20% darker color. If you saturate the color by 10%, you get **C18E8E**, and if you desaturate by 10%, it is **C1B4B4**.

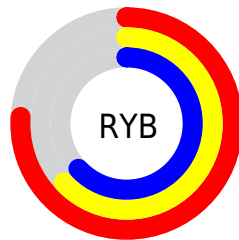
Distribution



Red (76%)

Green (63%)

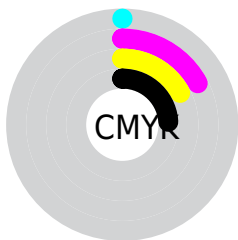
Blue (63%)



Red (76%)

Yellow (63%)

Blue (63%)

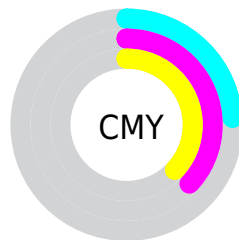


Cyan (0%)

Magenta (17%)

Yellow (17%)

Black (24%)



Cyan (24%)

Magenta (37%)

Yellow (37%)

Brightness & Saturation Gradients

These gradients show how the Hex color C1A1A1 changes by changing the brightness by 10 percent. The first figure shows a shift by +10% for each color and the second figure -10%.

Similar to the brightness gradients but the following saturation gradients show a change of the Hex color C1A1A1 by changing the saturation by 10% instead.



C1A1A1



C1A1A1

FFFFFF



A68787



FAD8D8



8B6D6E



FFF4F4



715555



583E3E



402828



2A1314



120000



000000



C1A1A1



C1A1A1

 C18E8E

 C1B4B4

 C17A7A

 C1C8C8

 C16767

 C1DBDB

 C15454

 C1EEEE

 C14141

 C1FFFF

 C12D2D

 C11A1A

 C10707

 C10000

Harmonies

Analogous

The Analogous color harmony consists of three colors that are next to each other on the color wheel.



BEA1AD



C1A1A1



BEA397

Triad

The Triadic color harmony groups three colors that are evenly spaced from another and form a triangle on the color wheel.



C1A1A1



9CAD9A



98ABBF

Complementary

The Complementary color scheme is a pair of colors which are on the opposite of each other on the color wheel.



C1A1A1



A1C1C1

Split Complementary

Split-complementary colors differ from the complementary color scheme. The scheme consists of three colors, the original color and two neighbors of the complement color.



8EAEBA



C1A1A1



91AFA4

Square

The Square scheme is like the rectangle color scheme, but the four colors are evenly spaced on the color wheel.



C1A1A1



A9AA93



8CAF80



A6A7BE

Rectangle

The Rectangle color scheme consists of four colors that form a rectangle on the color wheel.



C1A1A1



B9A593



8CAF80



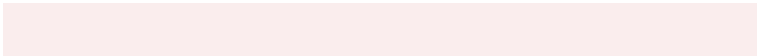
94ACBE

Sweetspot

The Sweet Spot groups the original color and five complimentary colors.



C1A1A1



FAEDED



C1A1C1



7D7575



FCFCFC



7D7D7D

Same Dimension

The Same Dimension uses a secret algorithm to generate beautiful new colors.



C1A1A1



FAC8C8



C1B1A1



615757



A10000



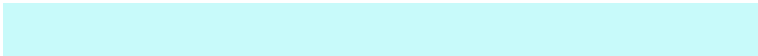
210000

Inverse Universe

The Inverse Universe completely reimagines the original color for something new.



A1C1C1



C8FAFA



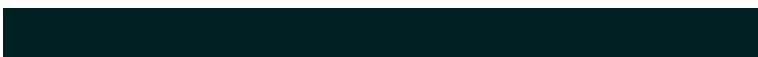
A1B1C1



576161



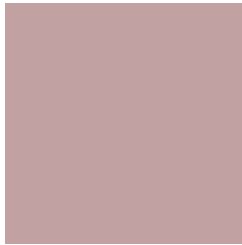
00A1A1



002121

Previews

White Background



This preview shows how the Hex color C1A1A1 looks on a white background.

Color Contrast Check

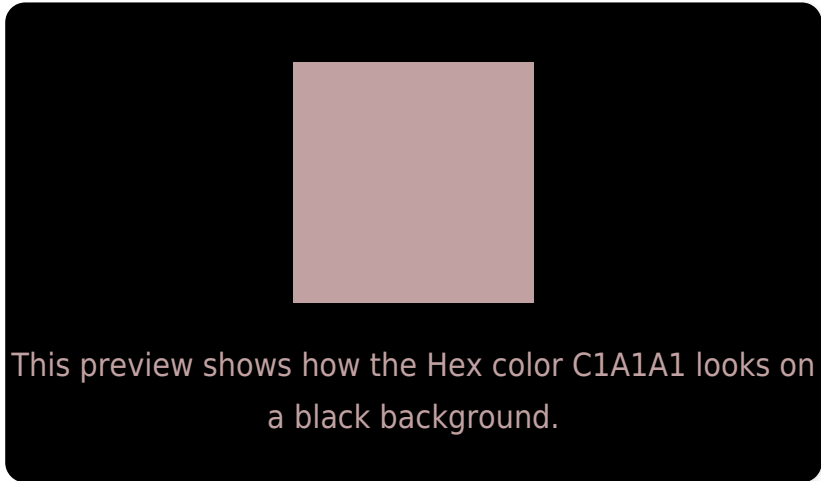
Large Text (above 18pt) WCAG AA × Fail

Any Text WCAG AA × Fail

Large Text (above 18pt) WCAG AAA × Fail

Any Text WCAG AAA × Fail

Black Background



Color Contrast Check

Large Text (above 18pt) WCAG AA ✓ Pass

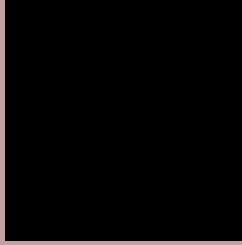
Any Text WCAG AA ✓ Pass

Large Text (above 18pt) WCAG AAA ✓ Pass

Any Text WCAG AAA ✓ Pass

If you want to check with other color combinations, try the [Color Contrast Checker](#).

Hex C1A1A1 Background



This preview shows how black text looks on a background with the Hex color C1A1A1.



This preview shows how white text looks on a background with the Hex color C1A1A1.

Color Blindness Simulation

Color vision deficiency is a very complex topic, and I could not describe the different causes any better than Wikipedia does, so if you want to learn more, you should check out their [article about color blindness](#).

Dichromacy



Original Color
C1A1A1

Protanopia
ADA8A5

Deuteranopia
BCA3A1

Trichromacy



Original Color
C1A1A1

Protanomaly
B4A5A4

Deuteranomaly
BEA2A1

Tritanomaly
C2A0A8

Monochromacy



Original Color
C1A1A1

Achromatopsia
ABABAB

Achromatomaly
B3A7A7

CSS Examples

Text

The CSS property to change the color of the text to Hex C1A1A1 is called "color". The color property can be set on classes, ids or directly on the HTML element.

This example shows how text in the color #C1A1A1 looks like.

```
.text, #text, p{  
    color:#C1A1A1  
}
```

If you want to add a text shadow in that color use the text-shadow property, you can generate a text shadow directly with our [CSS Text Shadow Generator](#).

Here you see how black text with a 4 pixel #C1A1A1 colored shadow looks like.

```
.shadow{ text-shadow: 4px 4px 2px #C1A1A1
}
```

Border

The CSS property to change the border of an element to Hex C1A1A1 is called "border". The border property can be set on classes, ids or directly on the HTML element.

This example shows the color as border, it can be applied via the CSS property "border" or "border-color".

```
.border, #border, table{ border:4px solid
#C1A1A1 }
```

If only the border color should be changed use the property `border-color`.

```
.border{ border-color:#C1A1A1 }
```

If you want to add a box shadow in that color use:

Here you see how a box with a 4 pixel #C1A1A1 colored shadow looks like.

```
.boxshadow{ -moz-box-shadow:4px 4px 4px  
4px #C1A1A1; -webkit-box-shadow:4px 4px  
4px 4px #C1A1A1; box-shadow:4px 4px 4px  
4px #C1A1A1 }
```

Background

The CSS property to change the background color of an element to Hex C1A1A1 is called "background". The background property can be set on classes, ids or directly on the HTML element.

```
.background, #background, body{  
background:#C1A1A1 }
```

If only the background color should be changed can be used:

```
.background{ background-color:#C1A1A1 }
```

This example shows the color as background, it is applied via the CSS property "background".

To optimize and compress your CSS code, you can use our [online CSS compressor and optimizer](#) based on csstidy. If you want to create a linear or radial gradient as background or border, check our [CSS Gradient Generator](#).

Hey! You found this booklet interesting? Support Converting Colors with the new Membership Option!

The pro membership hides all ads, plus gives you double the colors in the color bucket, and more awesome pro features!

[Learn more, Memberships starting at \\$2.50/m!](#)

**Follow me
on Twitter!**

@ConvertingColor