

Converting Colors

Hex(C1A98A)

Have a look what the booklet for
Hex(C1A98A) contains.

Hex(C1A98A)	3
<i>Conversions</i>	4
<i>Details</i>	6
<i>Harmonies</i>	11
<i>Previews</i>	23
<i>Color Blindness Simulation</i>	26
<i>CSS Examples</i>	29

Color

Hex(C1A98A)

Conversions

Conversions Part 1

Format	Color
Hex	C1A98A
RGB	193, 169, 138
RGB Percent	76%, 66%, 54%
CMY	0.2431, 0.3373, 0.4588
CMYK	0.00, 0.12, 0.28, 0.24
HSL	34°, 31%, 65%
HSV	34°, 28%, 76%
XYZ	40.7677, 41.5484, 29.9157
YIQ	172.6420, 24.2550, -4.5530

Conversions

Conversions Part 2

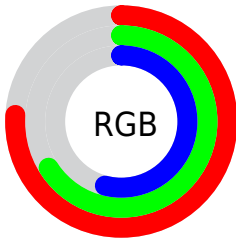
Format	Color
RYB	181, 193, 138
Decimal	12691850
CIELab	70.56, 3.98, 19.22
CIELCh	71, 19.627, 78.301
Yxy	41.5484, 0.3632, 0.3702
Android (android.graphics.Color)	4290881930 (0xFFC1A98A)
YUV	172.6420, -17.0785, 17.8540
Hunter-Lab	64.4580, 0.0943, 17.6035

Details

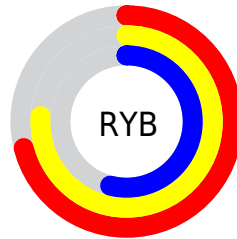
The Hex color **C1A98A** is a light color, and the websafe version is hex **999966**. A complement of this color would be **8AA2C1**, and the grayscale version is **ADADAD**.

A 20% lighter version of the original color is **FAE0C0**, and **8B7558** is the 20% darker color. If you saturate the color by 10%, you get **C1A177**, and if you desaturate by 10%, it is **C1B19D**.

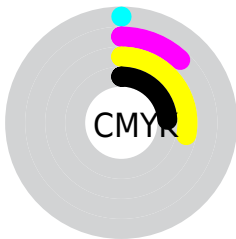
Distribution



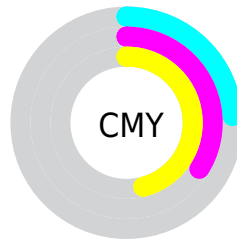
- Red (76%)
- Green (66%)
- Blue (54%)



- Red (71%)
- Yellow (76%)
- Blue (54%)



- Cyan (0%)
- Magenta (12%)
- Yellow (28%)
- Black (24%)



- Cyan (24%)
- Magenta (34%)
- Yellow (46%)

Brightness & Saturation Gradients

These gradients show how the Hex color C1A98A changes by changing the brightness by 10 percent. The first figure shows a shift by +10% for each color and the second figure -10%.

Similar to the brightness gradients but the following saturation gradients show a change of the Hex color C1A98A by changing the saturation by 10% instead.



C1A98A



C1A98A

FFFFFF



A58F70



FAE0C0



8B7558



FFFDDB



715C40



FFFFF8



57452A



3F2F15



291A00



0D0000



000000



C1A98A



C1A98A

 C1A177

 C1B19D

 C19863

 C1BAB1

 C19050

 C1C2C4

 C1873D

 C1CBD7

 C17F29

 C1D3EA

 C17616

 C1DCFE

 C16E03

 C1E4FF

 C16D00

 C1ECFF

 C1F5FF

Harmonies

Analogous

The Analogous color harmony consists of three colors that are next to each other on the color wheel.



CEA493



C1A98A



AFAF8B

Triad

The Triadic color harmony groups three colors that are evenly spaced from another and form a triangle on the color wheel.



C1A98A



7DB7B7



BDA5C4

Complementary

The Complementary color scheme is a pair of colors which are on the opposite of each other on the color wheel.



C1A98A



8AA2C1

Split Complementary

Split-complementary colors differ from the complementary color scheme. The scheme consists of three colors, the original color and two neighbors of the complement color.



A7AACE



C1A98A



7FB5C7

Square

The Square scheme is like the rectangle color scheme, but the four colors are evenly spaced on the color wheel.



C1A98A



88B6A5



8FB0CF



CCA1B4

Rectangle

The Rectangle color scheme consists of four colors that form a rectangle on the color wheel.



C1A98A



A1B290



8FB0CF



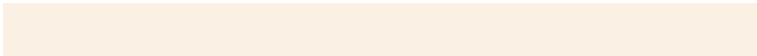
B6A6C9

Sweetspot

The Sweet Spot groups the original color and five complimentary colors.



C1A98A



FAF0E3



C18AA3



7D776F



FCFCFC



7D7D7D

Same Dimension

The Same Dimension uses a secret algorithm to generate beautiful new colors.



C1A98A



FAD5A5



BEC18A



615D57



A15B00



211300

Inverse Universe

The Inverse Universe completely reimagines the original color for something new.



8AA2C1



A5CAFA



8D8AC1



575B61



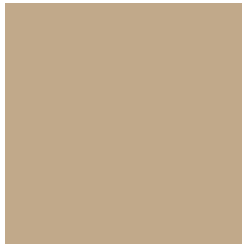
0046A1



000E21

Previews

White Background



This preview shows how the Hex color C1A98A looks on a white background.

Color Contrast Check

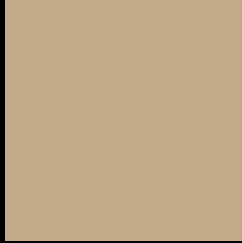
Large Text (above 18pt) WCAG AA × Fail

Any Text WCAG AA × Fail

Large Text (above 18pt) WCAG AAA × Fail

Any Text WCAG AAA × Fail

Black Background



This preview shows how the Hex color C1A98A looks on a black background.

Color Contrast Check

Large Text (above 18pt) WCAG AA ✓ Pass

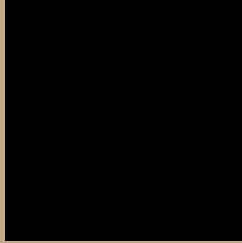
Any Text WCAG AA ✓ Pass

Large Text (above 18pt) WCAG AAA ✓ Pass

Any Text WCAG AAA ✓ Pass

If you want to check with other color combinations, try the [Color Contrast Checker](#).

Hex C1A98A Background



This preview shows how black text looks on a background with the Hex color C1A98A.



This preview shows how white text looks on a background with the Hex color C1A98A.

Color Blindness Simulation

Color vision deficiency is a very complex topic, and I could not describe the different causes any better than Wikipedia does, so if you want to learn more, you should check out their [article about color blindness](#).

Dichromacy



Original Color
C1A98A

Protanopia
B7AC8C

Deuteranopia
C9A68B



Tritanopia
C5A4B0

Trichromacy



Original Color
C1A98A

Protanomaly
BBAB8B

Deuteranomaly
C6A78B

Tritanomaly
C4A6A2

Monochromacy



Original Color
C1A98A

Achromatopsia
ADADAD

Achromatomaly
B4ACA0

CSS Examples

Text

The CSS property to change the color of the text to Hex C1A98A is called "color". The color property can be set on classes, ids or directly on the HTML element.

This example shows how text in the color #C1A98A looks like.

```
.text, #text, p{  
    color:#C1A98A  
}
```

If you want to add a text shadow in that color use the text-shadow property, you can generate a text shadow directly with our [CSS Text Shadow Generator](#).

Here you see how black text with a 4 pixel #C1A98A colored shadow looks like.

```
.shadow{ text-shadow: 4px 4px 2px #C1A98A
}
```

Border

The CSS property to change the border of an element to Hex C1A98A is called "border". The border property can be set on classes, ids or directly on the HTML element.

This example shows the color as border, it can be applied via the CSS property "border" or "border-color".

```
.border, #border, table{ border:4px solid
#C1A98A }
```

If only the border color should be changed use the property `border-color`.

```
.border{ border-color:#C1A98A }
```

If you want to add a box shadow in that color use:

Here you see how a box with a 4 pixel #C1A98A colored shadow looks like.

```
.boxshadow{ -moz-box-shadow:4px 4px 4px  
4px #C1A98A; -webkit-box-shadow:4px 4px  
4px 4px #C1A98A; box-shadow:4px 4px 4px  
4px #C1A98A }
```

Background

The CSS property to change the background color of an element to Hex C1A98A is called "background". The background property can be set on classes, ids or directly on the HTML element.

```
.background, #background, body{  
background:#C1A98A }
```

If only the background color should be changed can be used:

```
.background{ background-color:#C1A98A }
```

This example shows the color as background, it is applied via the CSS property "background".

To optimize and compress your CSS code, you can use our [online CSS compressor and optimizer](#) based on csstidy. If you want to create a linear or radial gradient as background or border, check our [CSS Gradient Generator](#).

Hey! You found this booklet interesting? Support Converting Colors with the new Membership Option!

The pro membership hides all ads, plus gives you double the colors in the color bucket, and more awesome pro features!

[Learn more, Memberships starting at \\$2.50/m!](#)

**Follow me
on Twitter!**

@ConvertingColor