

Converting Colors

Hex(C1ABB1)

Have a look what the booklet for
Hex(C1ABB1) contains.

Hex(C1ABB1)	3
<i>Conversions</i>	4
<i>Details</i>	6
<i>Harmonies</i>	11
<i>Previews</i>	23
<i>Color Blindness Simulation</i>	26
<i>CSS Examples</i>	29

Color

Hex(C1ABB1)

Conversions

Conversions Part 1

Format	Color
Hex	C1ABB1
RGB	193, 171, 177
RGB Percent	76%, 67%, 69%
CMY	0.2431, 0.3294, 0.3059
CMYK	0.00, 0.11, 0.08, 0.24
HSL	344°, 15%, 71%
HSV	344°, 11%, 76%
XYZ	44.4910, 43.6376, 47.6729
YIQ	178.2620, 11.1860, 6.5300

Conversions

Conversions Part 2

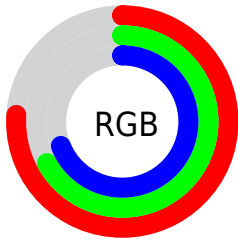
Format	Color
RYB	193, 171, 177
Decimal	12692401
CIELab	71.99, 8.97, -0.17
CIElCh	72, 8.976, 358.921
Yxy	43.6376, 0.3276, 0.3213
Android (android.graphics.Color)	4290882481 (0xFFC1ABB1)
YUV	178.2620, -0.6222, 12.9252
Hunter-Lab	66.0588, 4.6182, 3.4530

Details

The Hex color **C1ABB1** is a light color, and the websafe version is hex **999999**. A complement of this color would be **ABC1BB**, and the grayscale version is **B2B2B2**.

A 20% lighter version of the original color is **FAE2E9**, and **8B777C** is the 20% darker color. If you saturate the color by 10%, you get **C198A3**, and if you desaturate by 10%, it is **C1BEBF**.

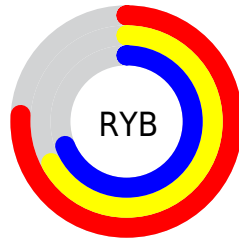
Distribution



Red (76%)

Green (67%)

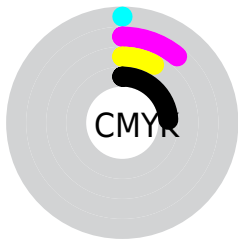
Blue (69%)



Red (76%)

Yellow (67%)

Blue (69%)

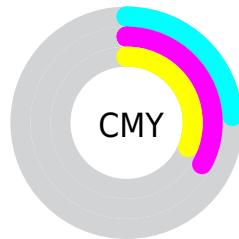


Cyan (0%)

Magenta (11%)

Yellow (8%)

Black (24%)



Cyan (24%)

Magenta (33%)

Yellow (31%)

Brightness & Saturation Gradients

These gradients show how the Hex color C1ABB1 changes by changing the brightness by 10 percent. The first figure shows a shift by +10% for each color and the second figure -10%.

Similar to the brightness gradients but the following saturation gradients show a change of the Hex color C1ABB1 by changing the saturation by 10% instead.

 C1ABB1

FFFFFF

 FAE2E9

 C1ABB1

 A69096

 8B777C

 725E64

 59464C

 423035

 2B1B20

 180008

 000000

 C1ABB1

 C1ABB1

 C198A3

 C1BEBF

 C18495

 C1D2CD

 C17187

 C1E5DB

 C15E79

 C1F8E9

 C14A6B

 C1FFF7

 C1375D

 C1FFFF

 C1244F

 C11141

 C10035

Harmonies

Analogous

The Analogous color harmony consists of three colors that are next to each other on the color wheel.



BBACB9



C1ABB1



C2ABA9

Triad

The Triadic color harmony groups three colors that are evenly spaced from another and form a triangle on the color wheel.



C1ABB1



AEB2A2



A0B4BE

Complementary

The Complementary color scheme is a pair of colors which are on the opposite of each other on the color wheel.



C1ABB1



ABC1BB

Split Complementary

Split-complementary colors differ from the complementary color scheme. The scheme consists of three colors, the original color and two neighbors of the complement color.



9CB5B8



C1ABB1



A5B4A8

Square

The Square scheme is like the rectangle color scheme, but the four colors are evenly spaced on the color wheel.



C1ABB1



B8B0A0



9EB5B0



A8B1C1

Rectangle

The Rectangle color scheme consists of four colors that form a rectangle on the color wheel.



C1ABB1



C1ACA4



9EB5B0



9EB4BC

Sweetspot

The Sweet Spot groups the original color and five complimentary colors.



C1ABB1



FAF2F4



BBABC1



7D7879



FCFCFC



7D7D7D

Same Dimension

The Same Dimension uses a secret algorithm to generate beautiful new colors.



C1ABB1



FAD7E0



C1B0AB



61575A



A1002C



210009

Inverse Universe

The Inverse Universe completely reimagines the original color for something new.



C1ABB1



FAD7E0



ABBCC1



61575A



A1002C



210009

Previews

White Background



This preview shows how the Hex color C1ABB1 looks on a white background.

Color Contrast Check

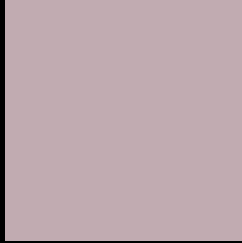
Large Text (above 18pt) WCAG AA × Fail

Any Text WCAG AA × Fail

Large Text (above 18pt) WCAG AAA × Fail

Any Text WCAG AAA × Fail

Black Background



This preview shows how the Hex color C1ABB1 looks on a black background.

Color Contrast Check

Large Text (above 18pt) WCAG AA ✓ Pass

Any Text WCAG AA ✓ Pass

Large Text (above 18pt) WCAG AAA ✓ Pass

Any Text WCAG AAA ✓ Pass

If you want to check with other color combinations, try the [Color Contrast Checker](#).

Hex C1ABB1 Background



This preview shows how black text looks on a background with the Hex color C1ABB1.



This preview shows how white text looks on a background with the Hex color C1ABB1.

Color Blindness Simulation

Color vision deficiency is a very complex topic, and I could not describe the different causes any better than Wikipedia does, so if you want to learn more, you should check out their [article about color blindness](#).

Dichromacy



Original Color
C1ABB1

Protanopia
B3B0B4

Deuteranopia
C1ABB1



Tritanopia
C2AAB7

Trichromacy



Original Color
C1ABB1

Protanomaly
B8AEB3

Deuteranomaly
C1ABB1

Tritanomaly
C2AAB5

Monochromacy



Original Color
C1ABB1

Achromatopsia
B2B2B2

Achromatomaly
B7AFB2

CSS Examples

Text

The CSS property to change the color of the text to Hex C1ABB1 is called "color". The color property can be set on classes, ids or directly on the HTML element.

This example shows how text in the color #C1ABB1 looks like.

```
.text, #text, p{  
    color:#C1ABB1  
}
```

If you want to add a text shadow in that color use the text-shadow property, you can generate a text shadow directly with our [CSS Text Shadow Generator](#).

Here you see how black text with a 4 pixel #C1ABB1 colored shadow looks like.

```
.shadow{ text-shadow: 4px 4px 2px #C1ABB1  
}
```

Border

The CSS property to change the border of an element to Hex C1ABB1 is called "border". The border property can be set on classes, ids or directly on the HTML element.

This example shows the color as border, it can be applied via the CSS property "border" or "border-color".

```
.border, #border, table{ border:4px solid  
#C1ABB1 }
```

If only the border color should be changed use the property `border-color`.

```
.border{ border-color:#C1ABB1 }
```

If you want to add a box shadow in that color use:

Here you see how a box with a 4 pixel #C1ABB1 colored shadow looks like.

```
.boxshadow{ -moz-box-shadow:4px 4px 4px  
4px #C1ABB1; -webkit-box-shadow:4px 4px  
4px 4px #C1ABB1; box-shadow:4px 4px 4px  
4px #C1ABB1 }
```

Background

The CSS property to change the background color of an element to Hex C1ABB1 is called "background". The background property can be set on classes, ids or directly on the HTML element.

```
.background, #background, body{  
background:#C1ABB1 }
```

If only the background color should be changed can be used:

```
.background{ background-color:#C1ABB1 }
```

This example shows the color as background, it is applied via the CSS property "background".

To optimize and compress your CSS code, you can use our [online CSS compressor and optimizer](#) based on csstidy. If you want to create a linear or radial gradient as background or border, check our [CSS Gradient Generator](#).

Hey! You found this booklet interesting? Support Converting Colors with the new Membership Option!

The pro membership hides all ads, plus gives you double the colors in the color bucket, and more awesome pro features!

[Learn more, Memberships starting at \\$2.50/m!](#)

**Follow me
on Twitter!**

@ConvertingColor