

Converting Colors

Hex(C1AEBB)

Have a look what the booklet for
Hex(C1AEBB) contains.

Hex(C1AEBB)	3
<i>Conversions</i>	4
<i>Details</i>	6
<i>Harmonies</i>	11
<i>Previews</i>	23
<i>Color Blindness Simulation</i>	26
<i>CSS Examples</i>	29

Color

Hex(C1AEBB)

Conversions

Conversions Part 1

Format	Color
Hex	C1AEBB
RGB	193, 174, 187
RGB Percent	76%, 68%, 73%
CMY	0.2431, 0.3176, 0.2667
CMYK	0.00, 0.10, 0.03, 0.24
HSL	319°, 13%, 72%
HSV	319°, 10%, 76%
XYZ	46.0980, 45.1974, 53.3081
YIQ	181.1630, 7.1510, 8.0710

Conversions

Conversions Part 2

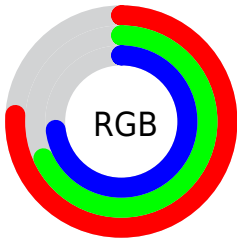
Format	Color
R _Y B	193, 174, 187
Decimal	12693179
CIE Lab	73.02, 9.13, -4.15
CIE LCh	73, 10.025, 335.577
Yxy	45.1974, 0.3188, 0.3126
Android (android.graphics.Color)	4290883259 (0xFFC1AEBB)
YUV	181.1630, 2.8776, 10.3810
Hunter-Lab	67.2290, 4.7442, 0.0474

Details

The Hex color **C1AEBB** is a light color, and the websafe version is hex **CCCCCC**. A complement of this color would be **AEC1B4**, and the grayscale version is **B5B5B5**.

A 20% lighter version of the original color is **F9E5F3**, and **8B7A86** is the 20% darker color. If you saturate the color by 10%, you get **C19BB5**, and if you desaturate by 10%, it is **C1C1C1**.

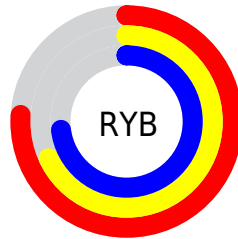
Distribution



Red (76%)

Green (68%)

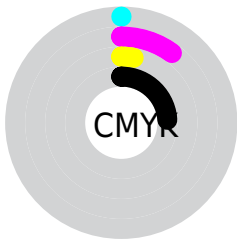
Blue (73%)



Red (76%)

Yellow (68%)

Blue (73%)

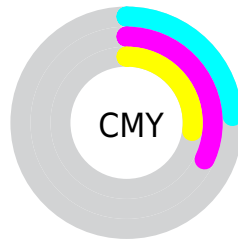


Cyan (0%)

Magenta (10%)

Yellow (3%)

Black (24%)



Cyan (24%)

Magenta (32%)

Yellow (27%)

Brightness & Saturation Gradients

These gradients show how the Hex color C1AEBB changes by changing the brightness by 10 percent. The first figure shows a shift by +10% for each color and the second figure -10%.

Similar to the brightness gradients but the following saturation gradients show a change of the Hex color C1AEBB by changing the saturation by 10% instead.

 C1AEBB

 C1AEBB

FFFFFF

 A693A0

 F9E5F3

 8B7A86

 72616D

 594954

 42323D

 2C1D27

 180413

 000000

 C1AEBB

 C1AEBB

 C19BB5

 C1C1C1

 C187AF

 C1D5C7

 C174A9

 C1E8CD

 C161A3

 C1FBD3

 C14E9D

 C1FFD9

 C13A96

 C1FFE0

 C12790

 C1FFE6

 C1148A

 C1FFEC

 C10084

 C1FFF2

Harmonies

Analogous

The Analogous color harmony consists of three colors that are next to each other on the color wheel.



B7B0C2



C1AEBB



C7ADB2

Triad

The Triadic color harmony groups three colors that are evenly spaced from another and form a triangle on the color wheel.



C1AEBB



B9B3A1



9DB8BE

Complementary

The Complementary color scheme is a pair of colors which are on the opposite of each other on the color wheel.



C1AEBB



AEC1B4

Split Complementary

Split-complementary colors differ from the complementary color scheme. The scheme consists of three colors, the original color and two neighbors of the complement color.



9EB9B5



C1AEBB



AFB6A4

Square

The Square scheme is like the rectangle color scheme, but the four colors are evenly spaced on the color wheel.



C1AEBB



C2B0A3



A5B8AB



A2B6C4

Rectangle

The Rectangle color scheme consists of four colors that form a rectangle on the color wheel.



C1AEBB



C7ADAC



A5B8AB



9CB9BB

Sweetspot

The Sweet Spot groups the original color and five complimentary colors.



C1AEBB



FAF2F8



B4AEC1



7D787B



FCFCFC



7D7D7D

Same Dimension

The Same Dimension uses a secret algorithm to generate beautiful new colors.



C1AEBB



FADCF0



C1AEB2



61575E



A1006E



210017

Inverse Universe

The Inverse Universe completely reimagines the original color for something new.



C1AEBB



FADCF0



AEC1BD



61575E



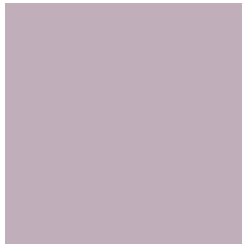
A1006E



210017

Previews

White Background



This preview shows how the Hex color C1AE8B looks on a white background.

Color Contrast Check

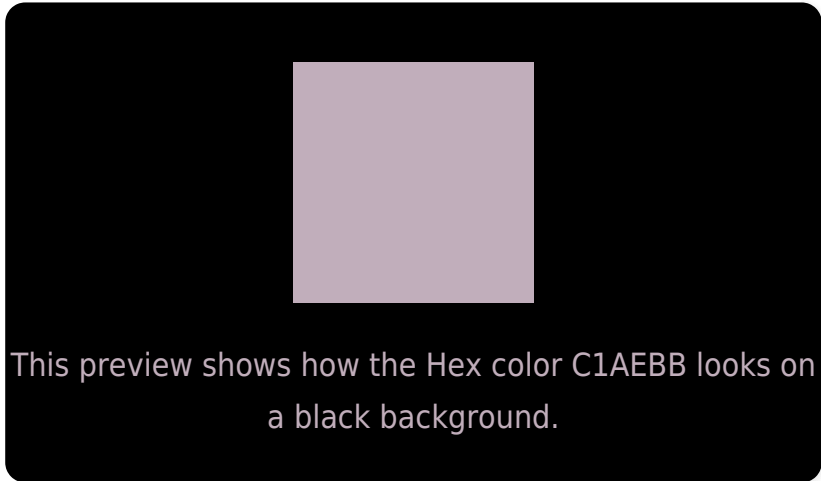
Large Text (above 18pt) WCAG AA × Fail

Any Text WCAG AA × Fail

Large Text (above 18pt) WCAG AAA × Fail

Any Text WCAG AAA × Fail

Black Background



Color Contrast Check

Large Text (above 18pt) WCAG AA ✓ Pass

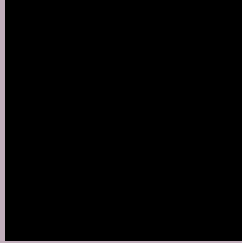
Any Text WCAG AA ✓ Pass

Large Text (above 18pt) WCAG AAA ✓ Pass

Any Text WCAG AAA ✓ Pass

If you want to check with other color combinations, try the [Color Contrast Checker](#).

Hex C1AEBB Background



This preview shows how black text looks on a background with the Hex color C1AEBB.



This preview shows how white text looks on a background with the Hex color C1AEBB.

Color Blindness Simulation

Color vision deficiency is a very complex topic, and I could not describe the different causes any better than Wikipedia does, so if you want to learn more, you should check out their [article about color blindness](#).

Dichromacy



Original Color
C1AEBB

Protanopia
B4B2BE

Deuteranopia
C1AEBB

Trichromacy



Original Color
C1AEBB

Protanomaly
B9B1BD

Deuteranomaly
C1AEBB

Tritanomaly
C1AEBC

Monochromacy



Original Color
C1AEBB

Achromatopsia
B5B5B5

Achromatomaly
B9B2B7

CSS Examples

Text

The CSS property to change the color of the text to Hex C1AEBB is called "color". The color property can be set on classes, ids or directly on the HTML element.

This example shows how text in the color #C1AEBB looks like.

```
.text, #text, p{  
    color:#C1AEBB  
}
```

If you want to add a text shadow in that color use the text-shadow property, you can generate a text shadow directly with our [CSS Text Shadow Generator](#).

Here you see how black text with a 4 pixel #C1AEBB colored shadow looks like.

```
.shadow{ text-shadow: 4px 4px 2px #C1AEBB
}
```

Border

The CSS property to change the border of an element to Hex C1AEBB is called "border". The border property can be set on classes, ids or directly on the HTML element.

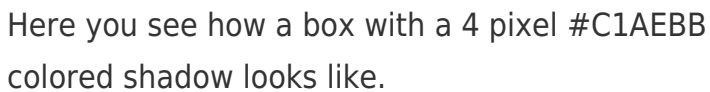
This example shows the color as border, it can be applied via the CSS property "border" or "border-color".

```
.border, #border, table{ border:4px solid
#C1AEBB }
```

If only the border color should be changed use the property `border-color`.

```
.border{ border-color:#C1AEBB }
```

If you want to add a box shadow in that color use:



Here you see how a box with a 4 pixel #C1AEBB colored shadow looks like.

```
.boxshadow{ -moz-box-shadow:4px 4px 4px  
4px #C1AEBB; -webkit-box-shadow:4px 4px  
4px 4px #C1AEBB; box-shadow:4px 4px 4px  
4px #C1AEBB }
```

Background

The CSS property to change the background color of an element to Hex C1AEBB is called "background". The background property can be set on classes, ids or directly on the HTML element.

```
.background, #background, body{  
background:#C1AEBB }
```

If only the background color should be changed can be used:

```
.background{ background-color:#C1AEBB }
```

This example shows the color as background, it is applied via the CSS property "background".

To optimize and compress your CSS code, you can use our [online CSS compressor and optimizer](#) based on csstidy. If you want to create a linear or radial gradient as background or border, check our [CSS Gradient Generator](#).

Hey! You found this booklet interesting? Support Converting Colors with the new Membership Option!

The pro membership hides all ads, plus gives you double the colors in the color bucket, and more awesome pro features!

[Learn more, Memberships starting at \\$2.50/m!](#)

**Follow me
on Twitter!**

@ConvertingColor