

Converting Colors

Hex(C1B4BD)

Have a look what the booklet for
Hex(C1B4BD) contains.

Hex(C1B4BD)	3
<i>Conversions</i>	4
<i>Details</i>	6
<i>Harmonies</i>	11
<i>Previews</i>	23
<i>Color Blindness Simulation</i>	26
<i>CSS Examples</i>	29

Color

Hex(C1B4BD)

Conversions

Conversions Part 1

Format	Color
Hex	C1B4BD
RGB	193, 180, 189
RGB Percent	76%, 71%, 74%
CMY	0.2431, 0.2941, 0.2588
CMYK	0.00, 0.07, 0.02, 0.24
HSL	318°, 9%, 73%
HSV	318°, 7%, 76%
XYZ	47.4989, 47.6541, 54.8388
YIQ	184.9130, 4.8590, 5.5550

Conversions

Conversions Part 2

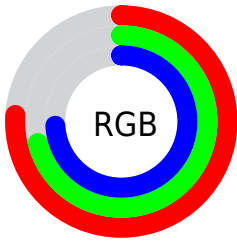
Format	Color
R _Y B	193, 180, 189
Decimal	12694717
CIE Lab	74.61, 6.24, -2.91
CIE LCh	75, 6.882, 335.007
Yxy	47.6541, 0.3167, 0.3177
Android (android.graphics.Color)	4290884797 (0xFFC1B4BD)
YUV	184.9130, 2.0149, 7.0923
Hunter-Lab	69.0319, 2.0148, 1.2225

Details

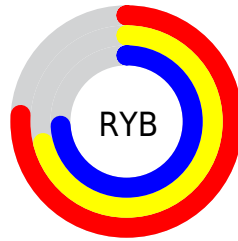
The Hex color **C1B4BD** is a light color, and the websafe version is hex **CCCCCC**. A complement of this color would be **B4C1B8**, and the grayscale version is **B9B9B9**.

A 20% lighter version of the original color is **F9ECF5**, and **8B7F88** is the 20% darker color. If you saturate the color by 10%, you get **C1A1B7**, and if you desaturate by 10%, it is **C1C7C3**.

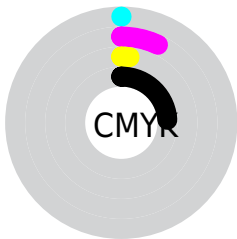
Distribution



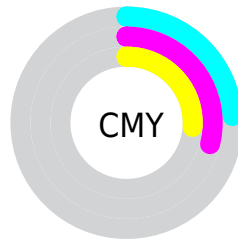
- Red (76%)
- Green (71%)
- Blue (74%)



- Red (76%)
- Yellow (71%)
- Blue (74%)



- Cyan (0%)
- Magenta (7%)
- Yellow (2%)
- Black (24%)



- Cyan (24%)
- Magenta (29%)
- Yellow (26%)

Brightness & Saturation Gradients

These gradients show how the Hex color C1B4BD changes by changing the brightness by 10 percent. The first figure shows a shift by +10% for each color and the second figure -10%.

Similar to the brightness gradients but the following saturation gradients show a change of the Hex color C1B4BD by changing the saturation by 10% instead.

 C1B4BD

FFFFFF

 F9ECF5

 C1B4BD

 A699A2

 8B7F88

 72666E

 594E56

 42373F

 2C2229

 180C15

 000000

 C1B4BD

 C1B4BD

 C1A1B7

 C1C7C3

 C18DB1

 C1DBC9

 C17AAB

 C1EECF

 C167A5

 C1FFD5

 C1549F

 C1FFDB

 C14099

 C1FFE1

 C12D93

 C1FFE7

 C11A8D

 C1FFED

 C10688

 C1FFF2

Harmonies

Analogous

The Analogous color harmony consists of three colors that are next to each other on the color wheel.



BAB6C2



C1B4BD



C5B3B7

Triad

The Triadic color harmony groups three colors that are evenly spaced from another and form a triangle on the color wheel.



C1B4BD



BCB7AB



A8BBBF

Complementary

The Complementary color scheme is a pair of colors which are on the opposite of each other on the color wheel.



C1B4BD



B4C1B8

Split Complementary

Split-complementary colors differ from the complementary color scheme. The scheme consists of three colors, the original color and two neighbors of the complement color.



A9BBB8



C1B4BD



B5B9AD

Square

The Square scheme is like the rectangle color scheme, but the four colors are evenly spaced on the color wheel.



C1B4BD



C2B5AC



AEBBB2



ACBAC3

Rectangle

The Rectangle color scheme consists of four colors that form a rectangle on the color wheel.



C1B4BD



C6B4B2



AE BBB2



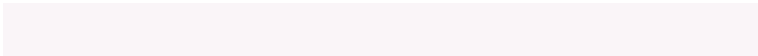
A8 BBB D

Sweetspot

The Sweet Spot groups the original color and five complimentary colors.



C1B4BD



FAF5F8



B8B4C1



7D7A7C



FCFCFC



7D7D7D

Same Dimension

The Same Dimension uses a secret algorithm to generate beautiful new colors.



C1B4BD



FAE6F4



C1B4B7



61575E



A1006F



210017

Inverse Universe

The Inverse Universe completely reimagines the original color for something new.



C1B4BD



FAE6F4



B4C1BE



61575E



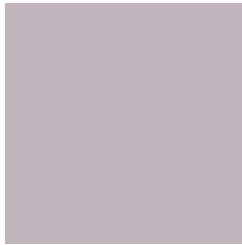
A1006F



210017

Previews

White Background



This preview shows how the Hex color C1B4BD looks on a white background.

Color Contrast Check

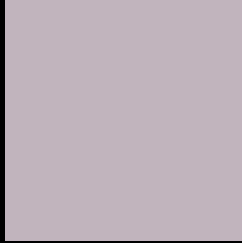
Large Text (above 18pt) WCAG AA × Fail

Any Text WCAG AA × Fail

Large Text (above 18pt) WCAG AAA × Fail

Any Text WCAG AAA × Fail

Black Background



This preview shows how the Hex color C1B4BD looks on a black background.

Color Contrast Check

Large Text (above 18pt) WCAG AA ✓ Pass

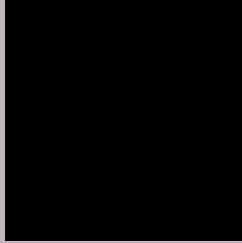
Any Text WCAG AA ✓ Pass

Large Text (above 18pt) WCAG AAA ✓ Pass

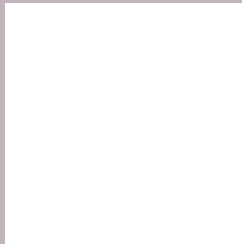
Any Text WCAG AAA ✓ Pass

If you want to check with other color combinations, try the [Color Contrast Checker](#).

Hex C1B4BD Background



This preview shows how black text looks on a background with the Hex color C1B4BD.



This preview shows how white text looks on a background with the Hex color C1B4BD.

Color Blindness Simulation

Color vision deficiency is a very complex topic, and I could not describe the different causes any better than Wikipedia does, so if you want to learn more, you should check out their [article about color blindness](#).

Dichromacy



Original Color
C1B4BD

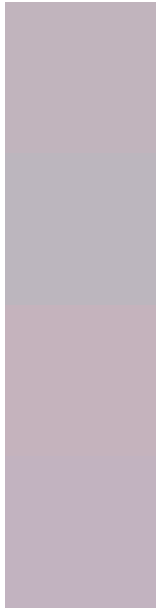
Protanopia
B9B7BF

Deuteranopia
C7B2BD



Tritanopia
C2B3C1

Trichromacy



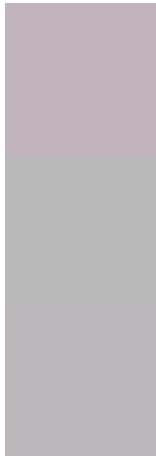
Original Color
C1B4BD

Protanomaly
BCB6BE

Deuteranomaly
C5B3BD

Tritanomaly
C2B3C0

Monochromacy



Original Color
C1B4BD

Achromatopsia
B9B9B9

Achromatomaly
BCB7BA

CSS Examples

Text

The CSS property to change the color of the text to Hex C1B4BD is called "color". The color property can be set on classes, ids or directly on the HTML element.

This example shows how text in the color #C1B4BD looks like.

```
.text, #text, p{  
    color:#C1B4BD  
}
```

If you want to add a text shadow in that color use the text-shadow property, you can generate a text shadow directly with our [CSS Text Shadow Generator](#).

Here you see how black text with a 4 pixel #C1B4BD colored shadow looks like.

```
.shadow{ text-shadow: 4px 4px 2px #C1B4BD
}
```

Border

The CSS property to change the border of an element to Hex C1B4BD is called "border". The border property can be set on classes, ids or directly on the HTML element.

This example shows the color as border, it can be applied via the CSS property "border" or "border-color".

```
.border, #border, table{ border:4px solid
#C1B4BD }
```

If only the border color should be changed use the property `border-color`.

```
.border{ border-color:#C1B4BD }
```

If you want to add a box shadow in that color use:

Here you see how a box with a 4 pixel #C1B4BD colored shadow looks like.

```
.boxshadow{ -moz-box-shadow:4px 4px 4px  
4px #C1B4BD; -webkit-box-shadow:4px 4px  
4px 4px #C1B4BD; box-shadow:4px 4px 4px  
4px #C1B4BD }
```

Background

The CSS property to change the background color of an element to Hex C1B4BD is called "background". The background property can be set on classes, ids or directly on the HTML element.

```
.background, #background, body{  
background:#C1B4BD }
```

If only the background color should be changed can be used:

```
.background{ background-color:#C1B4BD }
```

This example shows the color as background, it is applied via the CSS property "background".

To optimize and compress your CSS code, you can use our [online CSS compressor and optimizer](#) based on csstidy. If you want to create a linear or radial gradient as background or border, check our [CSS Gradient Generator](#).

Hey! You found this booklet interesting? Support Converting Colors with the new Membership Option!

The pro membership hides all ads, plus gives you double the colors in the color bucket, and more awesome pro features!

[Learn more, Memberships starting at \\$2.50/m!](#)

**Follow me
on Twitter!**

@ConvertingColor