

Converting Colors

Hex(C27C7C)

Have a look what the booklet for
Hex(C27C7C) contains.

Hex(C27C7C)	3
<i>Conversions</i>	4
<i>Details</i>	6
<i>Harmonies</i>	11
<i>Previews</i>	23
<i>Color Blindness Simulation</i>	26
<i>CSS Examples</i>	29

Color

Hex(C27C7C)

Conversions

Conversions Part 1

Format	Color
Hex	C27C7C
RGB	194, 124, 124
RGB Percent	76%, 49%, 49%
CMY	0.2392, 0.5137, 0.5137
CMYK	0.00, 0.36, 0.36, 0.24
HSL	0°, 36%, 62%
HSV	0°, 36%, 76%
XYZ	33.0939, 27.3399, 22.6017
YIQ	144.9300, 41.7200, 14.8400

Conversions

Conversions Part 2

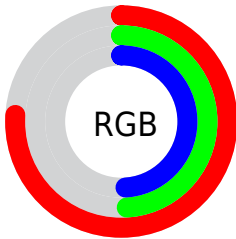
Format	Color
RYB	194, 124, 124
Decimal	12745852
CIELab	59.29, 27.24, 11.39
CIELCh	59, 29.523, 22.686
Yxy	27.3399, 0.3986, 0.3293
Android (android.graphics.Color)	4290935932 (0xFFC27C7C)
YUV	144.9300, -10.3185, 43.0344
Hunter-Lab	52.2875, 21.4732, 10.9728

Details

The Hex color **C27C7C** is a dark color, and the websafe version is hex **CC9999**. A complement of this color would be **7CC2C2**, and the grayscale version is **919191**.

A 20% lighter version of the original color is **FCB1B0**, and **8A4A4B** is the 20% darker color. If you saturate the color by 10%, you get **C26969**, and if you desaturate by 10%, it is **C28F8F**.

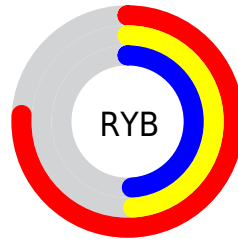
Distribution



Red (76%)

Green (49%)

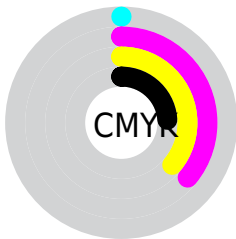
Blue (49%)



Red (76%)

Yellow (49%)

Blue (49%)

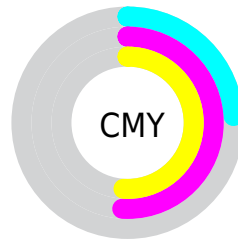


Cyan (0%)

Magenta (36%)

Yellow (36%)

Black (24%)



Cyan (24%)

Magenta (51%)

Yellow (51%)

Brightness & Saturation Gradients

These gradients show how the Hex color C27C7C changes by changing the brightness by 10 percent. The first figure shows a shift by +10% for each color and the second figure -10%.

Similar to the brightness gradients but the following saturation gradients show a change of the Hex color C27C7C by changing the saturation by 10% instead.

 C27C7C

 C27C7C

FFFFFF

 A66363

 FCB1B0

 8A4A4B

 FFCDCD

 6F3235

 FFE9E8

 551B20

 3C0308

 260001

 000000

 C27C7C

 C27C7C

 C26969

 C28F8F

 C25555

 C2A3A3

 C24242

 C2B6B6

 C22E2E

 C2CACA

 C21B1B

 C2DDDD

 C20808

 C2F0F0

 C20000

 C2FFFF

Harmonies

Analogous

The Analogous color harmony consists of three colors that are next to each other on the color wheel.



BD7C96



C27C7C



B98266

Triad

The Triadic color harmony groups three colors that are evenly spaced from another and form a triangle on the color wheel.



C27C7C



6E996E



6193C2

Complementary

The Complementary color scheme is a pair of colors which are on the opposite of each other on the color wheel.



C27C7C



7CC2C2

Split Complementary

Split-complementary colors differ from the complementary color scheme. The scheme consists of three colors, the original color and two neighbors of the complement color.



3C99B7



C27C7C



4F9C87

Square

The Square scheme is like the rectangle color scheme, but the four colors are evenly spaced on the color wheel.



C27C7C



8C935E



359DA2



898ABE

Rectangle

The Rectangle color scheme consists of four colors that form a rectangle on the color wheel.



C27C7C



AE885E



359DA2



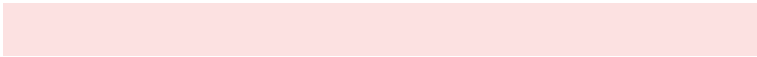
5496C0

Sweetspot

The Sweet Spot groups the original color and five complimentary colors.



C27C7C



FCE1E1



C27CC2



806F6F



000000



808080

Same Dimension

The Same Dimension uses a secret algorithm to generate beautiful new colors.



C27C7C



FC9090



C29F7C



615757



A10000



210000

Inverse Universe

The Inverse Universe completely reimagines the original color for something new.



7CC2C2



90FCFC



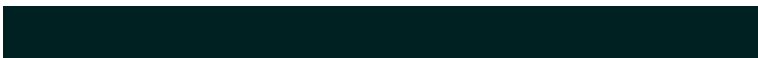
7C9FC2



576161



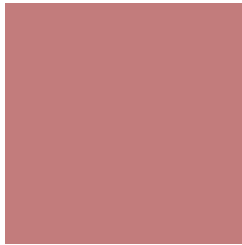
00A1A1



002121

Previews

White Background



This preview shows how the Hex color C27C7C looks on a white background.

Color Contrast Check

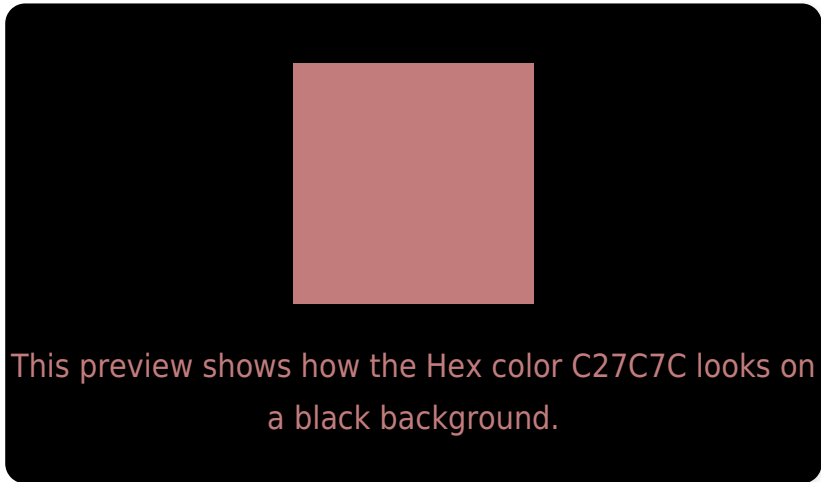
Large Text (above 18pt) WCAG AA ✓ Pass

Any Text WCAG AA ✗ Fail

Large Text (above 18pt) WCAG AAA ✗ Fail

Any Text WCAG AAA ✗ Fail

Black Background



Color Contrast Check

Large Text (above 18pt) WCAG AA ✓ Pass

Any Text WCAG AA ✓ Pass

Large Text (above 18pt) WCAG AAA ✓ Pass

Any Text WCAG AAA × Fail

If you want to check with other color combinations, try the [Color Contrast Checker](#).

Hex C27C7C Background



This preview shows how black text looks on a background with the Hex color C27C7C.



This preview shows how white text looks on a background with the Hex color C27C7C.

Color Blindness Simulation

Color vision deficiency is a very complex topic, and I could not describe the different causes any better than Wikipedia does, so if you want to learn more, you should check out their [article about color blindness](#).

Dichromacy



Original Color
C27C7C

Protanopia
948F86

Deuteranopia
A58A7A



Tritanopia
C37B84

Trichromacy



Original Color
C27C7C

Protanomaly
A58882

Deuteranomaly
B0857B

Tritanomaly
C37B81

Monochromacy



Original Color
C27C7C

Achromatopsia
919191

Achromatomaly
A38989

CSS Examples

Text

The CSS property to change the color of the text to Hex C27C7C is called "color". The color property can be set on classes, ids or directly on the HTML element.

This example shows how text in the color #C27C7C looks like.

```
.text, #text, p{  
    color:#C27C7C  
}
```

If you want to add a text shadow in that color use the text-shadow property, you can generate a text shadow directly with our [CSS Text Shadow Generator](#).

Here you see how black text with a 4 pixel #C27C7C colored shadow looks like.

```
.shadow{ text-shadow: 4px 4px 2px #C27C7C
}
```

Border

The CSS property to change the border of an element to Hex C27C7C is called "border". The border property can be set on classes, ids or directly on the HTML element.

This example shows the color as border, it can be applied via the CSS property "border" or "border-color".

```
.border, #border, table{ border:4px solid
#C27C7C }
```

If only the border color should be changed use the property `border-color`.

```
.border{ border-color:#C27C7C }
```

If you want to add a box shadow in that color use:

Here you see how a box with a 4 pixel #C27C7C colored shadow looks like.

```
.boxshadow{ -moz-box-shadow:4px 4px 4px  
4px #C27C7C; -webkit-box-shadow:4px 4px  
4px 4px #C27C7C; box-shadow:4px 4px 4px  
4px #C27C7C }
```

Background

The CSS property to change the background color of an element to Hex C27C7C is called "background". The background property can be set on classes, ids or directly on the HTML element.

```
.background, #background, body{  
background:#C27C7C }
```

If only the background color should be changed can be used:

```
.background{ background-color:#C27C7C }
```

This example shows the color as background, it is applied via the CSS property "background".

To optimize and compress your CSS code, you can use our [online CSS compressor and optimizer](#) based on csstidy. If you want to create a linear or radial gradient as background or border, check our [CSS Gradient Generator](#).

Hey! You found this booklet interesting? Support Converting Colors with the new Membership Option!

The pro membership hides all ads, plus gives you double the colors in the color bucket, and more awesome pro features!

[Learn more, Memberships starting at \\$2.50/m!](#)

**Follow me
on Twitter!**

@ConvertingColor