

Converting Colors

Hex(C28362)

Have a look what the booklet for
Hex(C28362) contains.

Hex(C28362)	3
<i>Conversions</i>	4
<i>Details</i>	6
<i>Harmonies</i>	11
<i>Previews</i>	23
<i>Color Blindness Simulation</i>	26
<i>CSS Examples</i>	29

Color

Hex(C28362)

Conversions

Conversions Part 1	
Format	Color
Hex	C28362
RGB	194, 131, 98
RGB Percent	76%, 51%, 38%
CMY	0.2392, 0.4863, 0.6157
CMYK	0.00, 0.32, 0.49, 0.24
HSL	21°, 44%, 57%
HSV	21°, 49%, 76%
XYZ	32.5690, 28.5838, 15.3559
YIQ	146.0750, 48.1410, 3.0930

Conversions

Conversions Part 2

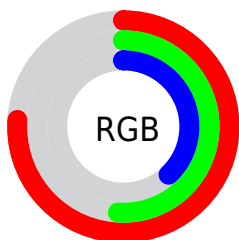
Format	Color
RYB	194, 148, 98
Decimal	12747618
CIELab	60.41, 20.52, 27.64
CIELCh	60, 34.426, 53.410
Yxy	28.5838, 0.4257, 0.3736
Android (android.graphics.Color)	4290937698 (0xFFC28362)
YUV	146.0750, -23.7010, 42.0302
Hunter-Lab	53.4638, 15.1769, 20.3953

Details

The Hex color **C28362** is a dark color, and the websafe version is hex **CC9966**. A complement of this color would be **62A1C2**, and the grayscale version is **929292**.

A 20% lighter version of the original color is **FDB895**, and **895133** is the 20% darker color. If you saturate the color by 10%, you get **C2764F**, and if you desaturate by 10%, it is **C29075**.

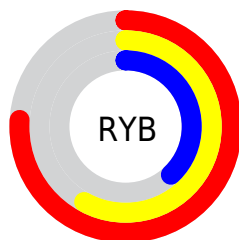
Distribution



Red (76%)

Green (51%)

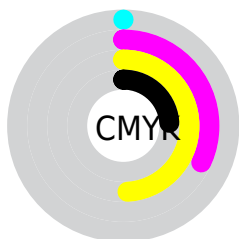
Blue (38%)



Red (76%)

Yellow (58%)

Blue (38%)

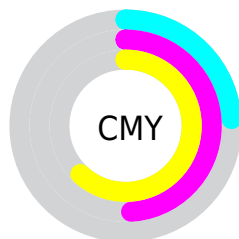


Cyan (0%)

Magenta (32%)

Yellow (49%)

Black (24%)



Cyan (24%)

Magenta (49%)

Yellow (62%)

Brightness & Saturation Gradients

These gradients show how the Hex color C28362 changes by changing the brightness by 10 percent. The first figure shows a shift by +10% for each color and the second figure -10%.

Similar to the brightness gradients but the following saturation gradients show a change of the Hex color C28362 by changing the saturation by 10% instead.

 C28362

FFFFFF

 FDB895

 FFD4B0

 FFF0CB

 FFFFE8

 C28362

 A56A4A

 895133

 6E3A1D

 532305

 3A0E00

 230001

 000000

 C28362

 C28362

 C2764F

 C29075

 C26A3B

 C29C89

 C25D28

 C2A99C

 C25014

 C2B6B0

 C24301

 C2C3C3

 C24300

 C2CFD6

 C2DCEA

 C2E9FD

 C2F6FF

Harmonies

Analogous

The Analogous color harmony consists of three colors that are next to each other on the color wheel.



CD7B7B



C28362



AC8E55

Triad

The Triadic color harmony groups three colors that are evenly spaced from another and form a triangle on the color wheel.



C28362



41A18A



8B8CC9

Complementary

The Complementary color scheme is a pair of colors which are on the opposite of each other on the color wheel.



C28362



62A1C2

Split Complementary

Split-complementary colors differ from the complementary color scheme. The scheme consists of three colors, the original color and two neighbors of the complement color.



5997CD



C28362



08A2A9

Square

The Square scheme is like the rectangle color scheme, but the four colors are evenly spaced on the color wheel.



C28362



6A9E6C



1C9EC2



B181B6

Rectangle

The Rectangle color scheme consists of four colors that form a rectangle on the color wheel.



C28362



989456



1C9EC2



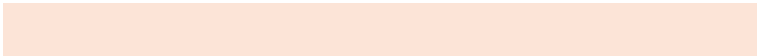
7C90CC

Sweetspot

The Sweet Spot groups the original color and five complimentary colors.



C28362



FCE4D7



C262A2



807069



000000



808080

Same Dimension

The Same Dimension uses a secret algorithm to generate beautiful new colors.



C28362



FC9B68



C2B262



615B57



A13700



210B00

Inverse Universe

The Inverse Universe completely reimagines the original color for something new.



62A1C2



68C9FC



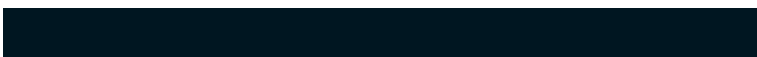
6272C2



575E61



0069A1



001621

Previews

White Background



This preview shows how the Hex color C28362 looks on a white background.

Color Contrast Check

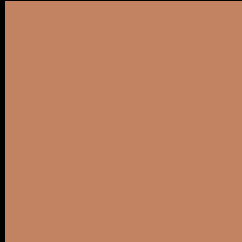
Large Text (above 18pt) WCAG AA ✓ Pass

Any Text WCAG AA ✗ Fail

Large Text (above 18pt) WCAG AAA ✗ Fail

Any Text WCAG AAA ✗ Fail

Black Background



This preview shows how the Hex color C28362 looks on a black background.

Color Contrast Check

Large Text (above 18pt) WCAG AA ✓ Pass

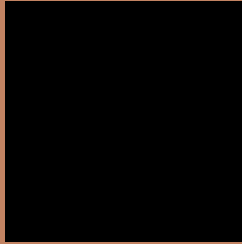
Any Text WCAG AA ✓ Pass

Large Text (above 18pt) WCAG AAA ✓ Pass

Any Text WCAG AAA × Fail

If you want to check with other color combinations, try the [Color Contrast Checker](#).

Hex C28362 Background



This preview shows how black text looks on a background with the Hex color C28362.



This preview shows how white text looks on a background with the Hex color C28362.

Color Blindness Simulation

Color vision deficiency is a very complex topic, and I could not describe the different causes any better than Wikipedia does, so if you want to learn more, you should check out their [article about color blindness](#).

Dichromacy



Original Color

[C28362](#)

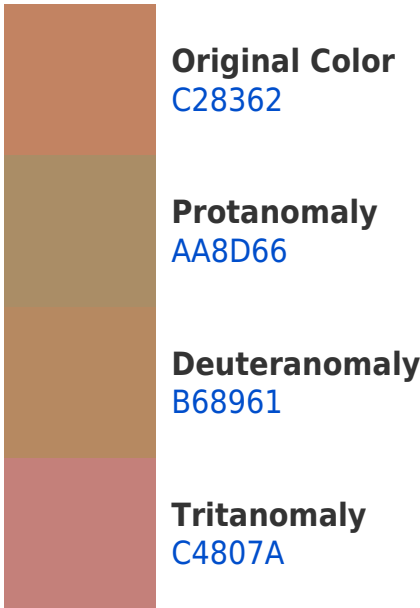
Protanopia

[9D9268](#)

Deuteranopia

[AF8C60](#)

Trichromacy



Monochromacy



CSS Examples

Text

The CSS property to change the color of the text to Hex C28362 is called "color". The color property can be set on classes, ids or directly on the HTML element.

This example shows how text in the color #C28362 looks like.

```
.text, #text, p{  
    color:#C28362  
}
```

If you want to add a text shadow in that color use the text-shadow property, you can generate a text shadow directly with our [CSS Text Shadow Generator](#).

Here you see how black text with a 4 pixel #C28362 colored shadow looks like.

```
.shadow{ text-shadow: 4px 4px 2px #C28362
}
```

Border

The CSS property to change the border of an element to Hex C28362 is called "border". The border property can be set on classes, ids or directly on the HTML element.

This example shows the color as border, it can be applied via the CSS property "border" or "border-color".

```
.border, #border, table{ border:4px solid
#C28362 }
```

If only the border color should be changed use the property border-color.

```
.border{ border-color:#C28362 }
```

If you want to add a box shadow in that color use:

Here you see how a box with a 4 pixel #C28362 colored shadow looks like.

```
.boxshadow{ -moz-box-shadow:4px 4px 4px  
4px #C28362; -webkit-box-shadow:4px 4px  
4px 4px #C28362; box-shadow:4px 4px 4px  
4px #C28362 }
```

Background

The CSS property to change the background color of an element to Hex C28362 is called "background". The background property can be set on classes, ids or directly on the HTML element.

```
.background, #background, body{  
background:#C28362 }
```

If only the background color should be changed can be used:

```
.background{ background-color:#C28362 }
```

This example shows the color as background, it is applied via the CSS property "background".

To optimize and compress your CSS code, you can use our [online CSS compressor and optimizer](#) based on csstidy. If you want to create a linear or radial gradient as background or border, check our [CSS Gradient Generator](#).

Hey! You found this booklet
interesting? Support Converting
Colors with the new Membership
Option!

The pro membership hides all ads, plus gives you
double the colors in the color bucket, and more
awesome pro features!

[Learn more, Memberships starting at \\$2.50/m!](#)

**Follow me
on Twitter!**

@ConvertingColor