

Converting Colors

Hex(C2894B)

Have a look what the booklet for
Hex(C2894B) contains.

Hex(C2894B)	3
<i>Conversions</i>	4
<i>Details</i>	6
<i>Harmonies</i>	11
<i>Previews</i>	23
<i>Color Blindness Simulation</i>	26
<i>CSS Examples</i>	29

Color

Hex(C2894B)

Conversions

Conversions Part 1

Format	Color
Hex	C2894B
RGB	194, 137, 75
RGB Percent	76%, 54%, 29%
CMY	0.2392, 0.4627, 0.7059
CMYK	0.00, 0.29, 0.61, 0.24
HSL	31°, 49%, 53%
HSV	31°, 61%, 76%
XYZ	32.4638, 29.8687, 10.7108
YIQ	146.9750, 53.8740, -7.1980

Conversions

Conversions Part 2

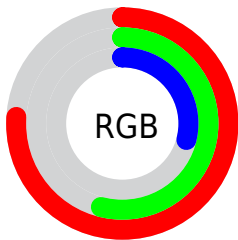
Format	Color
RYB	184, 194, 75
Decimal	12749131
CIELab	61.54, 15.28, 41.37
CIELCh	62, 44.098, 69.726
Yxy	29.8687, 0.4444, 0.4089
Android (android.graphics.Color)	4290939211 (0xFFC2894B)
YUV	146.9750, -35.4837, 41.2409
Hunter-Lab	54.6522, 10.3888, 26.6368

Details

The Hex color **C2894B** is a dark color, and the websafe version is hex **CC9966**. The color can be described as middle muted orange. A complement of this color would be **4B84C2**, and the grayscale version is **939393**.

A 20% lighter version of the original color is **FDBE7E**, and **89571B** is the 20% darker color. If you saturate the color by 10%, you get **C28038**, and if you desaturate by 10%, it is **C2925E**.

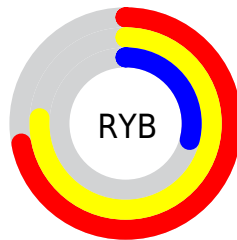
Distribution



Red (76%)

Green (54%)

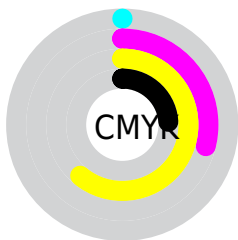
Blue (29%)



Red (72%)

Yellow (76%)

Blue (29%)

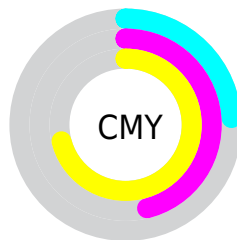


Cyan (0%)

Magenta (29%)

Yellow (61%)

Black (24%)



Cyan (24%)

Magenta (46%)

Yellow (71%)

Brightness & Saturation Gradients

These gradients show how the Hex color C2894B changes by changing the brightness by 10 percent. The first figure shows a shift by +10% for each color and the second figure -10%.

Similar to the brightness gradients but the following saturation gradients show a change of the Hex color C2894B by changing the saturation by 10% instead.

 C2894B

 C2894B

FFFFFF

 A57033

 FDBE7E

 89571B

 FFDA98

 6D4000

 FFF7B3

 522A00

 FFFFFCF

 371500

 FFFFFEB

 200000

 000000

 C2894B

 C2894B

 C28038

 C2925E

 C27624

 C29C72

 C26D11

 C2A585

 C26500

 C2AE99

 C2B7AC

 C2C1BF

 C2CAD3

 C2D3E6

 C2DDFA

Harmonies

Analogous

The Analogous color harmony consists of three colors that are next to each other on the color wheel.



D97B65



C2894B



A09745

Triad

The Triadic color harmony groups three colors that are evenly spaced from another and form a triangle on the color wheel.



C2894B



00A9A1



A985D1

Complementary

The Complementary color scheme is a pair of colors which are on the opposite of each other on the color wheel.



C2894B



4B84C2

Split Complementary

Split-complementary colors differ from the complementary color scheme. The scheme consists of three colors, the original color and two neighbors of the complement color.



6B94E1



C2894B



00A7C5

Square

The Square scheme is like the rectangle color scheme, but the four colors are evenly spaced on the color wheel.



C2894B



3DA778



00A0DD



CF78B1

Rectangle

The Rectangle color scheme consists of four colors that form a rectangle on the color wheel.



C2894B



859E4E



00A0DD



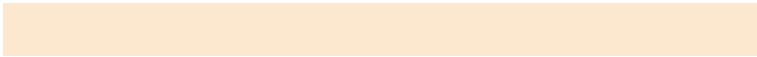
978BD8

Sweetspot

The Sweet Spot groups the original color and five complimentary colors.



C2894B



FCE7CF



C24B85



807263



000000



808080

Same Dimension

The Same Dimension uses a secret algorithm to generate beautiful new colors.



C2894B



FCA342



C0C24B



615C57



A15400



211100

Inverse Universe

The Inverse Universe completely reimagines the original color for something new.



4B84C2



429BFC



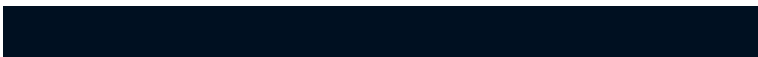
4D4BC2



575C61



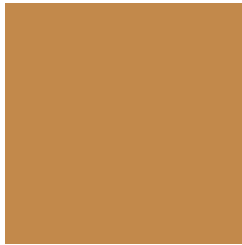
004DA1



001021

Previews

White Background



This preview shows how the Hex color C2894B looks on a white background.

Color Contrast Check

Large Text (above 18pt) WCAG AA ✓ Pass

Any Text WCAG AA × Fail

Large Text (above 18pt) WCAG AAA × Fail

Any Text WCAG AAA × Fail

Black Background



Color Contrast Check

Large Text (above 18pt) WCAG AA ✓ Pass

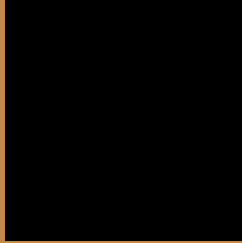
Any Text WCAG AA ✓ Pass

Large Text (above 18pt) WCAG AAA ✓ Pass

Any Text WCAG AAA × Fail

If you want to check with other color combinations, try the [Color Contrast Checker](#).

Hex C2894B Background



This preview shows how black text looks on a background with the Hex color C2894B.



This preview shows how white text looks on a background with the Hex color C2894B.

Color Blindness Simulation

Color vision deficiency is a very complex topic, and I could not describe the different causes any better than Wikipedia does, so if you want to learn more, you should check out their [article about color blindness](#).

Dichromacy



Original Color
C2894B

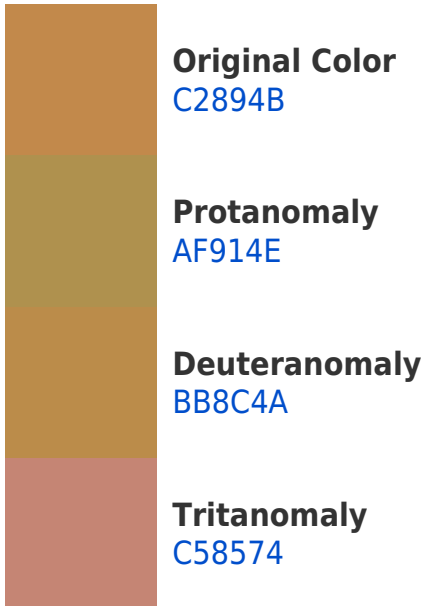
Protanopia
A4954F

Deuteranopia
B78E4A

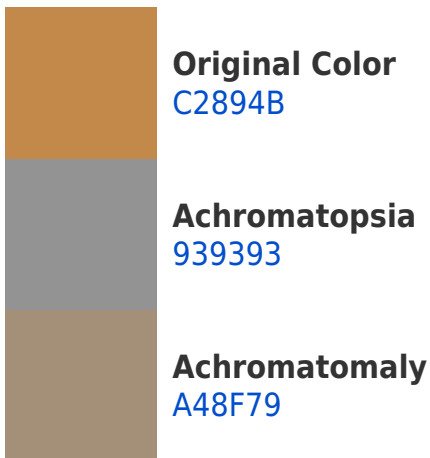


Tritanopia
C7828B

Trichromacy



Monochromacy



CSS Examples

Text

The CSS property to change the color of the text to Hex C2894B is called "color". The color property can be set on classes, ids or directly on the HTML element.

This example shows how text in the color #C2894B looks like.

```
.text, #text, p{  
    color:#C2894B  
}
```

If you want to add a text shadow in that color use the text-shadow property, you can generate a text shadow directly with our [CSS Text Shadow Generator](#).

Here you see how black text with a 4 pixel #C2894B colored shadow looks like.

```
.shadow{ text-shadow: 4px 4px 2px #C2894B
}
```

Border

The CSS property to change the border of an element to Hex C2894B is called "border". The border property can be set on classes, ids or directly on the HTML element.

This example shows the color as border, it can be applied via the CSS property "border" or "border-color".

```
.border, #border, table{ border:4px solid
#C2894B }
```

If only the border color should be changed use the property `border-color`.

```
.border{ border-color:#C2894B }
```

If you want to add a box shadow in that color use:

Here you see how a box with a 4 pixel #C2894B colored shadow looks like.

```
.boxshadow{ -moz-box-shadow:4px 4px 4px  
4px #C2894B; -webkit-box-shadow:4px 4px  
4px 4px #C2894B; box-shadow:4px 4px 4px  
4px #C2894B }
```

Background

The CSS property to change the background color of an element to Hex C2894B is called "background". The background property can be set on classes, ids or directly on the HTML element.

```
.background, #background, body{  
background:#C2894B }
```

If only the background color should be changed can be used:

```
.background{ background-color:#C2894B }
```

This example shows the color as background, it is applied via the CSS property "background".

To optimize and compress your CSS code, you can use our [online CSS compressor and optimizer](#) based on csstidy. If you want to create a linear or radial gradient as background or border, check our [CSS Gradient Generator](#).

Hey! You found this booklet interesting? Support Converting Colors with the new Membership Option!

The pro membership hides all ads, plus gives you double the colors in the color bucket, and more awesome pro features!

[Learn more, Memberships starting at \\$2.50/m!](#)

**Follow me
on Twitter!**

@ConvertingColor