

Converting Colors

Hex(C29189)

Have a look what the booklet for
Hex(C29189) contains.

Hex(C29189)	3
<i>Conversions</i>	4
<i>Details</i>	6
<i>Harmonies</i>	11
<i>Previews</i>	23
<i>Color Blindness Simulation</i>	26
<i>CSS Examples</i>	29

Color

Hex(C29189)

Conversions

Conversions Part 1

Format	Color
Hex	C29189
RGB	194, 145, 137
RGB Percent	76%, 57%, 54%
CMY	0.2392, 0.4314, 0.4627
CMYK	0.00, 0.25, 0.29, 0.24
HSL	8°, 32%, 65%
HSV	8°, 29%, 76%
XYZ	36.8889, 33.5263, 28.1939
YIQ	158.7390, 31.7720, 7.9000

Conversions

Conversions Part 2

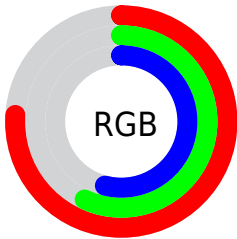
Format	Color
RYB	194, 146, 137
Decimal	12751241
CIELab	64.58, 17.37, 11.46
CIELCh	65, 20.810, 33.425
Yxy	33.5263, 0.3741, 0.3400
Android (android.graphics.Color)	4290941321 (0xFFC29189)
YUV	158.7390, -10.7173, 30.9239
Hunter-Lab	57.9019, 12.3928, 11.6615

Details

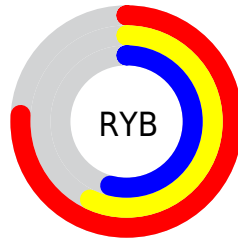
The Hex color **C29189** is a light color, and the websafe version is hex **CC9999**. A complement of this color would be **89BAC2**, and the grayscale version is **9F9F9F**.

A 20% lighter version of the original color is **FBC7BE**, and **8B5E57** is the 20% darker color. If you saturate the color by 10%, you get **C28076**, and if you desaturate by 10%, it is **C2A29C**.

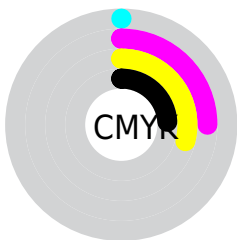
Distribution



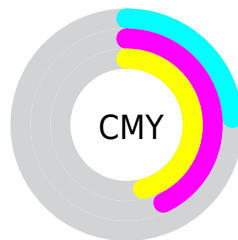
- Red (76%)
- Green (57%)
- Blue (54%)



- Red (76%)
- Yellow (57%)
- Blue (54%)



- Cyan (0%)
- Magenta (25%)
- Yellow (29%)
- Black (24%)



- Cyan (24%)
- Magenta (43%)
- Yellow (46%)

Brightness & Saturation Gradients

These gradients show how the Hex color C29189 changes by changing the brightness by 10 percent. The first figure shows a shift by +10% for each color and the second figure -10%.

Similar to the brightness gradients but the following saturation gradients show a change of the Hex color C29189 by changing the saturation by 10% instead.

 C29189

 C29189

FFFFFF

 A67770

 FBC7BE

 8B5E57

 FFE3DA

 714640

 FFFFFFF7

 57302A

 3E1A16

 280200

 000000

 C29189

 C29189

 C28076

 C2A29C

 C27062

 C2B2B0

 C25F4F

 C2C3C3

 C24E3B

 C2D4D7

 C23E28

 C2E4EA

 C22D15

 C2F5FD

 C21C01

 C2FFFF

 C21B00

Harmonies

Analogous

The Analogous color harmony consists of three colors that are next to each other on the color wheel.



C28F9B



C29189



B9967C

Triad

The Triadic color harmony groups three colors that are evenly spaced from another and form a triangle on the color wheel.



C29189



7FA68B



899EC1

Complementary

The Complementary color scheme is a pair of colors which are on the opposite of each other on the color wheel.



C29189



89BAC2

Split Complementary

Split-complementary colors differ from the complementary color scheme. The scheme consists of three colors, the original color and two neighbors of the complement color.



73A3BD



C29189



6EA79E

Square

The Square scheme is like the rectangle color scheme, but the four colors are evenly spaced on the color wheel.



C29189



94A27D



68A6B0



A297BC

Rectangle

The Rectangle color scheme consists of four colors that form a rectangle on the color wheel.



C29189



AF9A78



68A6B0



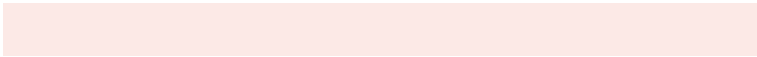
81A0C1

Sweetspot

The Sweet Spot groups the original color and five complimentary colors.



C29189



FCE9E6



C289BA



807371



000000



808080

Same Dimension

The Same Dimension uses a secret algorithm to generate beautiful new colors.



C29189



FCB0A4



C2AD89



615957



A11700



210500

Inverse Universe

The Inverse Universe completely reimagines the original color for something new.



89BAC2



A4F0FC



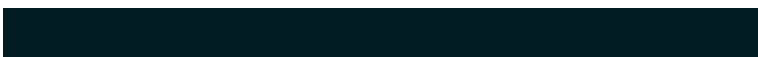
899EC2



576061



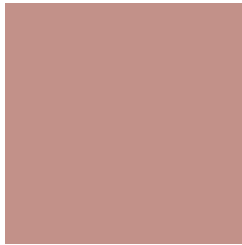
008AA1



001C21

Previews

White Background



This preview shows how the Hex color C29189 looks on a white background.

Color Contrast Check

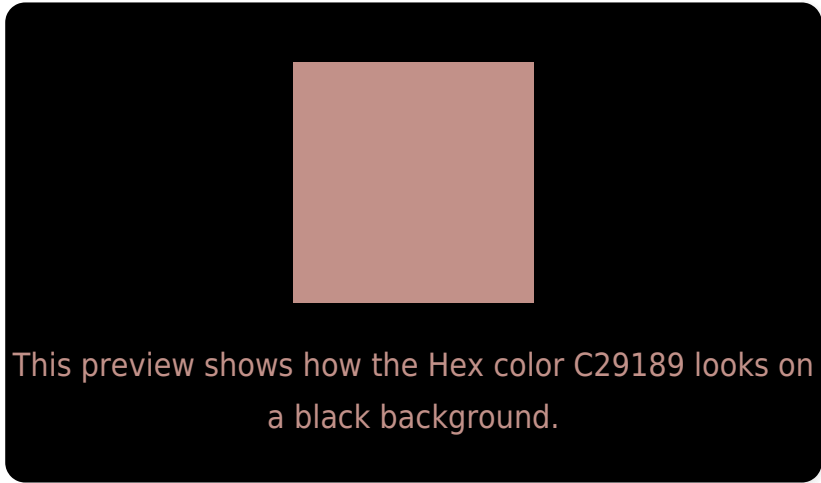
Large Text (above 18pt) WCAG AA × Fail

Any Text WCAG AA × Fail

Large Text (above 18pt) WCAG AAA × Fail

Any Text WCAG AAA × Fail

Black Background



Color Contrast Check

Large Text (above 18pt) WCAG AA ✓ Pass

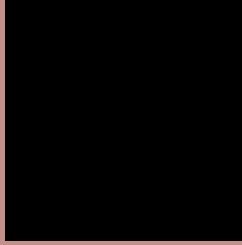
Any Text WCAG AA ✓ Pass

Large Text (above 18pt) WCAG AAA ✓ Pass

Any Text WCAG AAA ✓ Pass

If you want to check with other color combinations, try the [Color Contrast Checker](#).

Hex C29189 Background



This preview shows how black text looks on a background with the Hex color C29189.

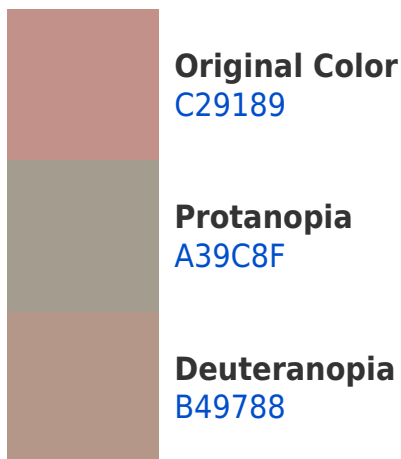


This preview shows how white text looks on a background with the Hex color C29189.

Color Blindness Simulation

Color vision deficiency is a very complex topic, and I could not describe the different causes any better than Wikipedia does, so if you want to learn more, you should check out their [article about color blindness](#).

Dichromacy





Tritanopia
C48F99

Trichromacy



Original Color
C29189

Protanomaly
AE988D

Deuteranomaly
B99588

Tritanomaly
C39093

Monochromacy



Original Color
C29189

Achromatopsia
9F9F9F

Achromatomaly
AC9A97

CSS Examples

Text

The CSS property to change the color of the text to Hex C29189 is called "color". The color property can be set on classes, ids or directly on the HTML element.

This example shows how text in the color #C29189 looks like.

```
.text, #text, p{  
    color:#C29189  
}
```

If you want to add a text shadow in that color use the text-shadow property, you can generate a text shadow directly with our [CSS Text Shadow Generator](#).

Here you see how black text with a 4 pixel #C29189 colored shadow looks like.

```
.shadow{ text-shadow: 4px 4px 2px #C29189
}
```

Border

The CSS property to change the border of an element to Hex C29189 is called "border". The border property can be set on classes, ids or directly on the HTML element.

This example shows the color as border, it can be applied via the CSS property "border" or "border-color".

```
.border, #border, table{ border:4px solid
#C29189 }
```

If only the border color should be changed use the property `border-color`.

```
.border{ border-color:#C29189 }
```

If you want to add a box shadow in that color use:

Here you see how a box with a 4 pixel #C29189 colored shadow looks like.

```
.boxshadow{ -moz-box-shadow:4px 4px 4px  
4px #C29189; -webkit-box-shadow:4px 4px  
4px 4px #C29189; box-shadow:4px 4px 4px  
4px #C29189 }
```

Background

The CSS property to change the background color of an element to Hex C29189 is called "background". The background property can be set on classes, ids or directly on the HTML element.

```
.background, #background, body{  
background:#C29189 }
```

If only the background color should be changed can be used:

```
.background{ background-color:#C29189 }
```

This example shows the color as background, it is applied via the CSS property "background".

To optimize and compress your CSS code, you can use our [online CSS compressor and optimizer](#) based on csstidy. If you want to create a linear or radial gradient as background or border, check our [CSS Gradient Generator](#).

Hey! You found this booklet interesting? Support Converting Colors with the new Membership Option!

The pro membership hides all ads, plus gives you double the colors in the color bucket, and more awesome pro features!

[Learn more, Memberships starting at \\$2.50/m!](#)

**Follow me
on Twitter!**

@ConvertingColor