

Converting Colors

Hex(C29790)

Have a look what the booklet for
Hex(C29790) contains.

Hex(C29790)	3
<i>Conversions</i>	4
<i>Details</i>	6
<i>Harmonies</i>	11
<i>Previews</i>	23
<i>Color Blindness Simulation</i>	26
<i>CSS Examples</i>	29

Color

Hex(C29790)

Conversions

Conversions Part 1

Format	Color
Hex	C29790
RGB	194, 151, 144
RGB Percent	76%, 59%, 56%
CMY	0.2392, 0.4078, 0.4353
CMYK	0.00, 0.22, 0.26, 0.24
HSL	8°, 29%, 66%
HSV	8°, 26%, 76%
XYZ	38.3488, 35.6162, 31.2390
YIQ	163.0590, 27.8750, 6.9390

Conversions

Conversions Part 2

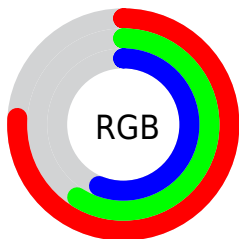
Format	Color
RYB	194, 152, 144
Decimal	12752784
CIELab	66.23, 15.05, 9.86
CIElCh	66, 17.988, 33.236
Yxy	35.6162, 0.3645, 0.3385
Android (android.graphics.Color)	4290942864 (0xFFC29790)
YUV	163.0590, -9.3961, 27.1353
Hunter-Lab	59.6793, 10.2620, 10.7403

Details

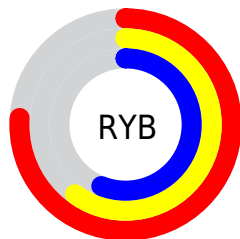
The Hex color **C29790** is a light color, and the websafe version is hex **CC9999**. A complement of this color would be **90BBC2**, and the grayscale version is **A3A3A3**.

A 20% lighter version of the original color is **FBCDC6**, and **8B645E** is the 20% darker color. If you saturate the color by 10%, you get **C2867D**, and if you desaturate by 10%, it is **C2A8A3**.

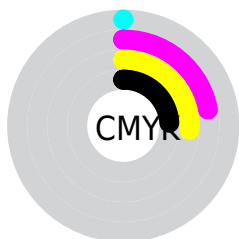
Distribution



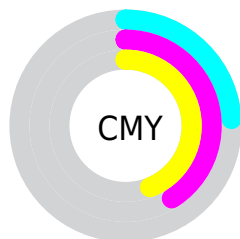
- Red (76%)
- Green (59%)
- Blue (56%)



- Red (76%)
- Yellow (60%)
- Blue (56%)



- Cyan (0%)
- Magenta (22%)
- Yellow (26%)
- Black (24%)



- Cyan (24%)
- Magenta (41%)
- Yellow (44%)

Brightness & Saturation Gradients

These gradients show how the Hex color C29790 changes by changing the brightness by 10 percent. The first figure shows a shift by +10% for each color and the second figure -10%.

Similar to the brightness gradients but the following saturation gradients show a change of the Hex color C29790 by changing the saturation by 10% instead.

 C29790

 C29790

FFFFFF

 A67D76

 FBCDC6

 8B645E

 FFEAE2

 714C46

FFFFFFE

 583530

 3F1F1B

 290A00

 000000

 C29790

 C29790

 C2867D

 C2A8A3

 C27669

 C2B8B7

 C26556

 C2C9CA

 C25442

 C2DADE

 C2442F

 C2EAF1

 C2331C

 C2FBFF

 C22208

 C2FFFF

 C21B00

Harmonies

Analogous

The Analogous color harmony consists of three colors that are next to each other on the color wheel.



C196A0



C29790



BA9B85

Triad

The Triadic color harmony groups three colors that are evenly spaced from another and form a triangle on the color wheel.



C29790



88A992



91A2C1

Complementary

The Complementary color scheme is a pair of colors which are on the opposite of each other on the color wheel.



C29790



90BBC2

Split Complementary

Split-complementary colors differ from the complementary color scheme. The scheme consists of three colors, the original color and two neighbors of the complement color.



7EA7BD



C29790



7AAAA2

Square

The Square scheme is like the rectangle color scheme, but the four colors are evenly spaced on the color wheel.



C29790



9AA586



75AAB2



A69CBC

Rectangle

The Rectangle color scheme consists of four colors that form a rectangle on the color wheel.



C29790



B19F81



75AAB2



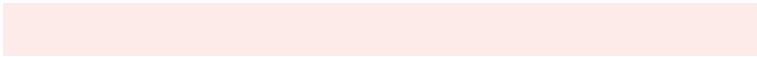
8AA4C1

Sweetspot

The Sweet Spot groups the original color and five complimentary colors.



C29790



FCEBE8



C290BB



807573



000000



808080

Same Dimension

The Same Dimension uses a secret algorithm to generate beautiful new colors.



C29790



FCB9AE



C2B090



615957



A11600



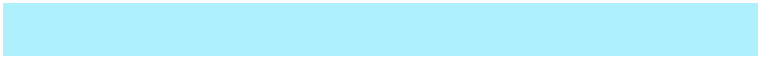
210500

Inverse Universe

The Inverse Universe completely reimagines the original color for something new.



90BBC2



AEF1FC



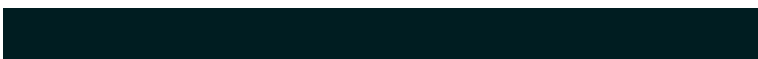
90A2C2



576061



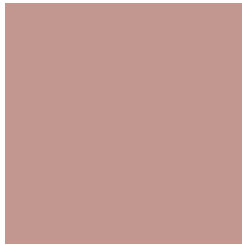
008AA1



001D21

Previews

White Background



This preview shows how the Hex color C29790 looks on a white background.

Color Contrast Check

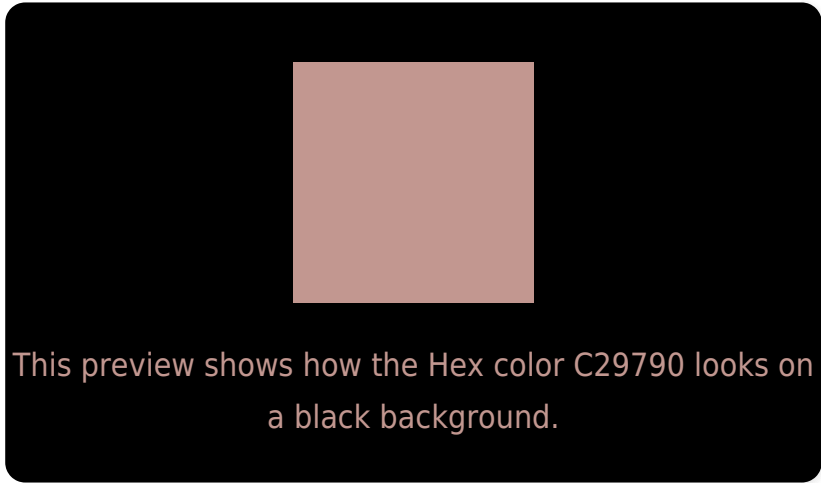
Large Text (above 18pt) WCAG AA × Fail

Any Text WCAG AA × Fail

Large Text (above 18pt) WCAG AAA × Fail

Any Text WCAG AAA × Fail

Black Background



Color Contrast Check

Large Text (above 18pt) WCAG AA ✓ Pass

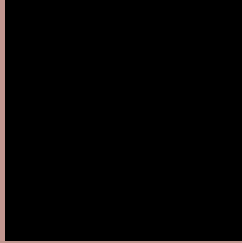
Any Text WCAG AA ✓ Pass

Large Text (above 18pt) WCAG AAA ✓ Pass

Any Text WCAG AAA ✓ Pass

If you want to check with other color combinations, try the [Color Contrast Checker](#).

Hex C29790 Background



This preview shows how black text looks on a background with the Hex color C29790.



This preview shows how white text looks on a background with the Hex color C29790.

Color Blindness Simulation

Color vision deficiency is a very complex topic, and I could not describe the different causes any better than Wikipedia does, so if you want to learn more, you should check out their [article about color blindness](#).

Dichromacy





Tritanopia
C495A0

Trichromacy



Original Color
C29790

Protanomaly
B19D93

Deuteranomaly
BB9A8F

Tritanomaly
C3969A

Monochromacy



Original Color
C29790

Achromatopsia
A3A3A3

Achromatomaly
AE9F9C

CSS Examples

Text

The CSS property to change the color of the text to Hex C29790 is called "color". The color property can be set on classes, ids or directly on the HTML element.

This example shows how text in the color #C29790 looks like.

```
.text, #text, p{  
    color:#C29790  
}
```

If you want to add a text shadow in that color use the text-shadow property, you can generate a text shadow directly with our [CSS Text Shadow Generator](#).

Here you see how black text with a 4 pixel #C29790 colored shadow looks like.

```
.shadow{ text-shadow: 4px 4px 2px #C29790
}
```

Border

The CSS property to change the border of an element to Hex C29790 is called "border". The border property can be set on classes, ids or directly on the HTML element.

This example shows the color as border, it can be applied via the CSS property "border" or "border-color".

```
.border, #border, table{ border:4px solid
#C29790 }
```

If only the border color should be changed use the property `border-color`.

```
.border{ border-color:#C29790 }
```

If you want to add a box shadow in that color use:

Here you see how a box with a 4 pixel #C29790 colored shadow looks like.

```
.boxshadow{ -moz-box-shadow:4px 4px 4px  
4px #C29790; -webkit-box-shadow:4px 4px  
4px 4px #C29790; box-shadow:4px 4px 4px  
4px #C29790 }
```

Background

The CSS property to change the background color of an element to Hex C29790 is called "background". The background property can be set on classes, ids or directly on the HTML element.

```
.background, #background, body{  
background:#C29790 }
```

If only the background color should be changed can be used:

```
.background{ background-color:#C29790 }
```

This example shows the color as background, it is applied via the CSS property "background".

To optimize and compress your CSS code, you can use our [online CSS compressor and optimizer](#) based on csstidy. If you want to create a linear or radial gradient as background or border, check our [CSS Gradient Generator](#).

Hey! You found this booklet interesting? Support Converting Colors with the new Membership Option!

The pro membership hides all ads, plus gives you double the colors in the color bucket, and more awesome pro features!

[Learn more, Memberships starting at \\$2.50/m!](#)

**Follow me
on Twitter!**

@ConvertingColor