

Converting Colors

Hex(C29968)

Have a look what the booklet for
Hex(C29968) contains.

Hex(C29968)	3
<i>Conversions</i>	4
<i>Details</i>	6
<i>Harmonies</i>	11
<i>Previews</i>	23
<i>Color Blindness Simulation</i>	26
<i>CSS Examples</i>	29

Color

Hex(C29968)

Conversions

Conversions Part 1

Format	Color
Hex	C29968
RGB	194, 153, 104
RGB Percent	76%, 60%, 41%
CMY	0.2392, 0.4000, 0.5922
CMYK	0.00, 0.21, 0.46, 0.24
HSL	33°, 42%, 58%
HSV	33°, 46%, 76%
XYZ	36.1381, 35.2513, 17.9962
YIQ	159.6730, 40.1650, -6.5470

Conversions

Conversions Part 2

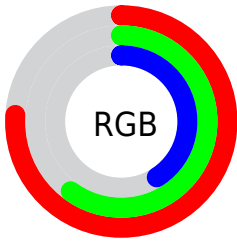
Format	Color
RYB	179, 194, 104
Decimal	12753256
CIELab	65.94, 9.02, 31.52
CIElCh	66, 32.789, 74.034
Yxy	35.2513, 0.4043, 0.3944
Android (android.graphics.Color)	4290943336 (0xFFC29968)
YUV	159.6730, -27.4468, 30.1048
Hunter-Lab	59.3728, 4.7441, 23.5898

Details

The Hex color **C29968** is a light color, and the websafe version is hex **CC9966**. A complement of this color would be **6891C2**, and the grayscale version is **A0A0A0**.

A 20% lighter version of the original color is **FCCF9C**, and **8A6638** is the 20% darker color. If you saturate the color by 10%, you get **C29055**, and if you desaturate by 10%, it is **C2A27B**.

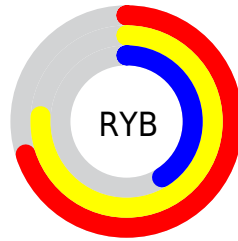
Distribution



Red (76%)

Green (60%)

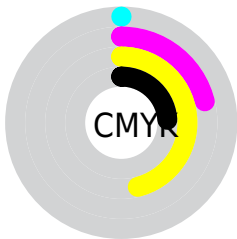
Blue (41%)



Red (70%)

Yellow (76%)

Blue (41%)

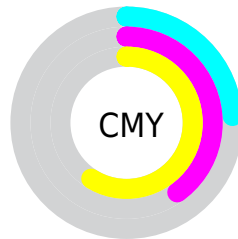


Cyan (0%)

Magenta (21%)

Yellow (46%)

Black (24%)



Cyan (24%)

Magenta (40%)

Yellow (59%)

Brightness & Saturation Gradients

These gradients show how the Hex color C29968 changes by changing the brightness by 10 percent. The first figure shows a shift by +10% for each color and the second figure -10%.

Similar to the brightness gradients but the following saturation gradients show a change of the Hex color C29968 by changing the saturation by 10% instead.

 C29968

 C29968

FFFFFF

 A67F4F

 FCCF9C

 8A6638

 FFEBB7

 6F4E21

 FFFFFD3

 55370A

 FFFFFEF

 3C2200

 240D00

 000000

 C29968

 C29968

 C29055

 C2A27B

 C28741

 C2AB8F

 C27E2E

 C2B4A2

 C2761A

 C2BCB6

 C26D07

 C2C5C9

 C26A00

 C2CEDC

 C2D7F0

 C2E0FF

 C2E9FF

Harmonies

Analogous

The Analogous color harmony consists of three colors that are next to each other on the color wheel.



D58F79



C29968



A6A367

Triad

The Triadic color harmony groups three colors that are evenly spaced from another and form a triangle on the color wheel.



C29968



40B0AD



B594CB

Complementary

The Complementary color scheme is a pair of colors which are on the opposite of each other on the color wheel.



C29968



6891C2

Split Complementary

Split-complementary colors differ from the complementary color scheme. The scheme consists of three colors, the original color and two neighbors of the complement color.



8D9ED9



C29968



39AEC8

Square

The Square scheme is like the rectangle color scheme, but the four colors are evenly spaced on the color wheel.



C29968



62AF8F



5EA8D8



D08CB1

Rectangle

The Rectangle color scheme consists of four colors that form a rectangle on the color wheel.



C29968



91A86F



5EA8D8



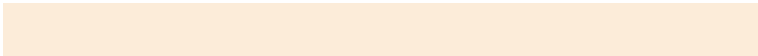
A997D1

Sweetspot

The Sweet Spot groups the original color and five complimentary colors.



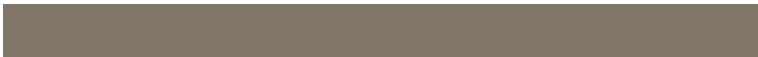
C29968



FCECD9



C26892



80766A



000000



808080

Same Dimension

The Same Dimension uses a secret algorithm to generate beautiful new colors.



C29968



FCBC6F



BFC268



615C57



A15700



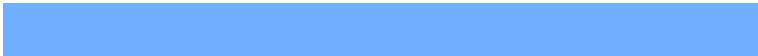
211200

Inverse Universe

The Inverse Universe completely reimagines the original color for something new.



6891C2



6FAFFC



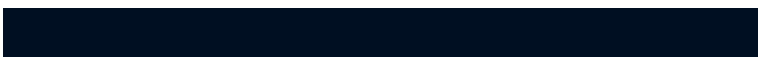
6B68C2



575C61



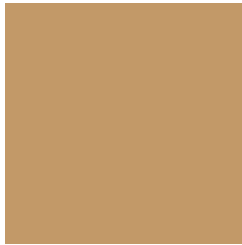
0049A1



000F21

Previews

White Background



This preview shows how the Hex color C29968 looks on a white background.

Color Contrast Check

Large Text (above 18pt) WCAG AA × Fail

Any Text WCAG AA × Fail

Large Text (above 18pt) WCAG AAA × Fail

Any Text WCAG AAA × Fail

Black Background



Color Contrast Check

Large Text (above 18pt) WCAG AA ✓ Pass

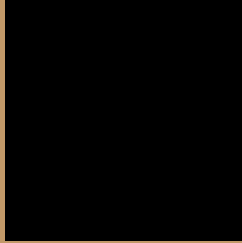
Any Text WCAG AA ✓ Pass

Large Text (above 18pt) WCAG AAA ✓ Pass

Any Text WCAG AAA ✓ Pass

If you want to check with other color combinations, try the [Color Contrast Checker](#).

Hex C29968 Background



This preview shows how black text looks on a background with the Hex color C29968.



This preview shows how white text looks on a background with the Hex color C29968.

Color Blindness Simulation

Color vision deficiency is a very complex topic, and I could not describe the different causes any better than Wikipedia does, so if you want to learn more, you should check out their [article about color blindness](#).

Dichromacy



Original Color
C29968

Protanopia
AEA06B

Deuteranopia
C19968



Tritanopia
C7929D

Trichromacy



Monochromacy



CSS Examples

Text

The CSS property to change the color of the text to Hex C29968 is called "color". The color property can be set on classes, ids or directly on the HTML element.

This example shows how text in the color #C29968 looks like.

```
.text, #text, p{  
    color:#C29968  
}
```

If you want to add a text shadow in that color use the text-shadow property, you can generate a text shadow directly with our [CSS Text Shadow Generator](#).

Here you see how black text with a 4 pixel #C29968 colored shadow looks like.

```
.shadow{ text-shadow: 4px 4px 2px #C29968
}
```

Border

The CSS property to change the border of an element to Hex C29968 is called "border". The border property can be set on classes, ids or directly on the HTML element.

This example shows the color as border, it can be applied via the CSS property "border" or "border-color".

```
.border, #border, table{ border:4px solid
#C29968 }
```

If only the border color should be changed use the property `border-color`.

```
.border{ border-color:#C29968 }
```

If you want to add a box shadow in that color use:

Here you see how a box with a 4 pixel #C29968 colored shadow looks like.

```
.boxshadow{ -moz-box-shadow:4px 4px 4px  
4px #C29968; -webkit-box-shadow:4px 4px  
4px 4px #C29968; box-shadow:4px 4px 4px  
4px #C29968 }
```

Background

The CSS property to change the background color of an element to Hex C29968 is called "background". The background property can be set on classes, ids or directly on the HTML element.

```
.background, #background, body{  
background:#C29968 }
```

If only the background color should be changed can be used:

```
.background{ background-color:#C29968 }
```

This example shows the color as background, it is applied via the CSS property "background".

To optimize and compress your CSS code, you can use our [online CSS compressor and optimizer](#) based on csstidy. If you want to create a linear or radial gradient as background or border, check our [CSS Gradient Generator](#).

Hey! You found this booklet interesting? Support Converting Colors with the new Membership Option!

The pro membership hides all ads, plus gives you double the colors in the color bucket, and more awesome pro features!

[Learn more, Memberships starting at \\$2.50/m!](#)

**Follow me
on Twitter!**

@ConvertingColor