

Converting Colors

Hex(C2998E)

Have a look what the booklet for
Hex(C2998E) contains.

Hex(C2998E)	3
<i>Conversions</i>	4
<i>Details</i>	6
<i>Harmonies</i>	11
<i>Previews</i>	23
<i>Color Blindness Simulation</i>	26
<i>CSS Examples</i>	29

Color

Hex(C2998E)

Conversions

Conversions Part 1

Format	Color
Hex	C2998E
RGB	194, 153, 142
RGB Percent	76%, 60%, 56%
CMY	0.2392, 0.4000, 0.4431
CMYK	0.00, 0.21, 0.27, 0.24
HSL	13°, 30%, 66%
HSV	13°, 27%, 76%
XYZ	38.5219, 36.2048, 30.5491
YIQ	164.0050, 27.9670, 5.2710

Conversions

Conversions Part 2

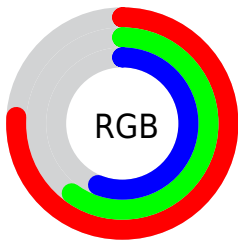
Format	Color
RYB	194, 156, 142
Decimal	12753294
CIELab	66.68, 13.66, 11.61
CIELCh	67, 17.929, 40.375
Yxy	36.2048, 0.3659, 0.3439
Android (android.graphics.Color)	4290943374 (0xFFC2998E)
YUV	164.0050, -10.8485, 26.3056
Hunter-Lab	60.1704, 8.9797, 12.0172

Details

The Hex color **C2998E** is a light color, and the websafe version is hex **CC9999**. A complement of this color would be **8EB7C2**, and the grayscale version is **A4A4A4**.

A 20% lighter version of the original color is **FBCFC4**, and **8B665C** is the 20% darker color. If you saturate the color by 10%, you get **C28A7B**, and if you desaturate by 10%, it is **C2A8A1**.

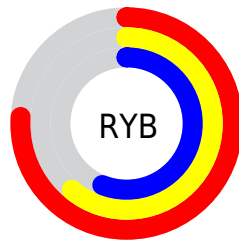
Distribution



Red (76%)

Green (60%)

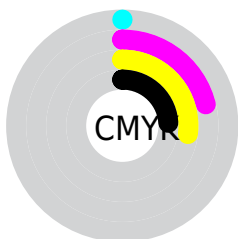
Blue (56%)



Red (76%)

Yellow (61%)

Blue (56%)

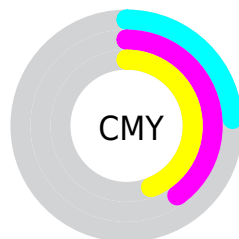


Cyan (0%)

Magenta (21%)

Yellow (27%)

Black (24%)



Cyan (24%)

Magenta (40%)

Yellow (44%)

Brightness & Saturation Gradients

These gradients show how the Hex color C2998E changes by changing the brightness by 10 percent. The first figure shows a shift by +10% for each color and the second figure -10%.

Similar to the brightness gradients but the following saturation gradients show a change of the Hex color C2998E by changing the saturation by 10% instead.

 C2998E

 C2998E

FFFFFF

 A67F74

 FBCFC4

 8B665C

 FFECE0

 714E44

FFFFFFC

 58372E

 3F2119

 2A0C00

 000000

 C2998E

 C2998E

 C28A7B

 C2A8A1

 C27A67

 C2B8B5

 C26B54

 C2C7C8

 C25C40

 C2D6DC

 C24D2D

 C2E5EF

 C23D1A

 C2F5FF

 C22E06

 C2FFFF

 C22900

Harmonies

Analogous

The Analogous color harmony consists of three colors that are next to each other on the color wheel.



C4979D



C2998E



B89E84

Triad

The Triadic color harmony groups three colors that are evenly spaced from another and form a triangle on the color wheel.



C2998E



85AB97



97A2C2

Complementary

The Complementary color scheme is a pair of colors which are on the opposite of each other on the color wheel.



C2998E



8EB7C2

Split Complementary

Split-complementary colors differ from the complementary color scheme. The scheme consists of three colors, the original color and two neighbors of the complement color.



83A7C0



C2998E



79ACA7

Square

The Square scheme is like the rectangle color scheme, but the four colors are evenly spaced on the color wheel.



C2998E



97A889



78AAB6



AC9CBB

Rectangle

The Rectangle color scheme consists of four colors that form a rectangle on the color wheel.



C2998E



AFA182



78AAB6



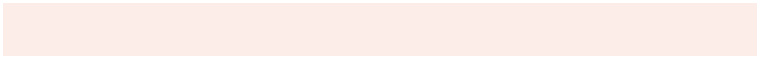
90A3C2

Sweetspot

The Sweet Spot groups the original color and five complimentary colors.



C2998E



FCEDE8



C28EB8



807573



000000



808080

Same Dimension

The Same Dimension uses a secret algorithm to generate beautiful new colors.



C2998E



FCBDAC



C2B28E



615957



A12200



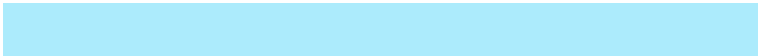
210700

Inverse Universe

The Inverse Universe completely reimagines the original color for something new.



8EB7C2



ACEBFC



8E9EC2



575F61



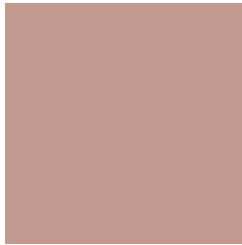
007FA1



001A21

Previews

White Background



This preview shows how the Hex color C2998E looks on a white background.

Color Contrast Check

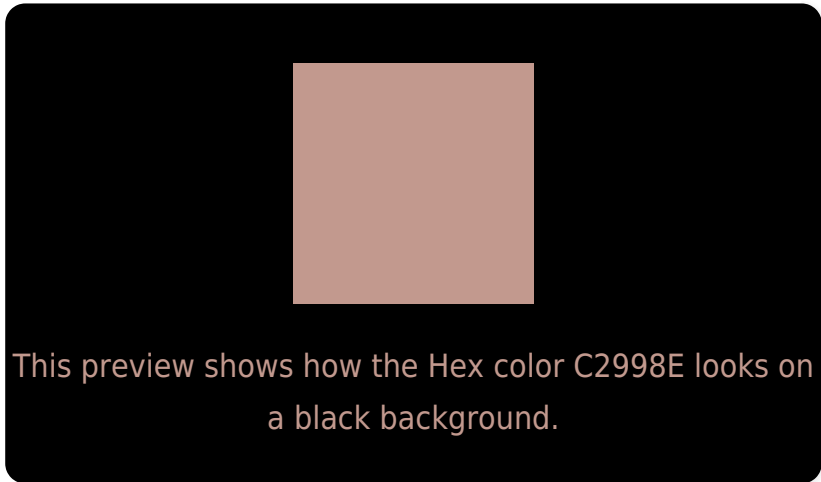
Large Text (above 18pt) WCAG AA × Fail

Any Text WCAG AA × Fail

Large Text (above 18pt) WCAG AAA × Fail

Any Text WCAG AAA × Fail

Black Background



Color Contrast Check

Large Text (above 18pt) WCAG AA ✓ Pass

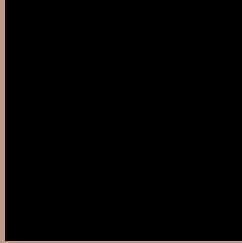
Any Text WCAG AA ✓ Pass

Large Text (above 18pt) WCAG AAA ✓ Pass

Any Text WCAG AAA ✓ Pass

If you want to check with other color combinations, try the [Color Contrast Checker](#).

Hex C2998E Background



This preview shows how black text looks on a background with the Hex color C2998E.

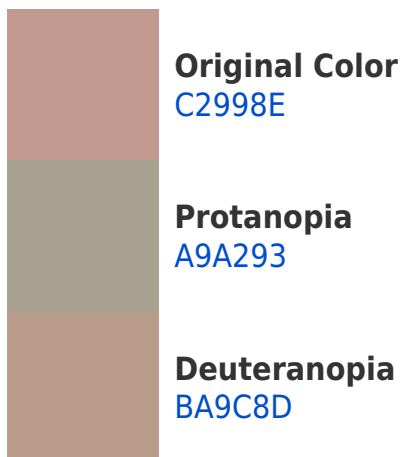


This preview shows how white text looks on a background with the Hex color C2998E.

Color Blindness Simulation

Color vision deficiency is a very complex topic, and I could not describe the different causes any better than Wikipedia does, so if you want to learn more, you should check out their [article about color blindness](#).

Dichromacy





Tritanopia
C496A2

Trichromacy



Original Color
C2998E

Protanomaly
B29F91

Deuteranomaly
BD9B8D

Tritanomaly
C3979B

Monochromacy



Original Color
C2998E

Achromatopsia
A4A4A4

Achromatomaly
AFA09C

CSS Examples

Text

The CSS property to change the color of the text to Hex C2998E is called "color". The color property can be set on classes, ids or directly on the HTML element.

This example shows how text in the color #C2998E looks like.

```
.text, #text, p{  
    color:#C2998E  
}
```

If you want to add a text shadow in that color use the text-shadow property, you can generate a text shadow directly with our [CSS Text Shadow Generator](#).

Here you see how black text with a 4 pixel #C2998E colored shadow looks like.

```
.shadow{ text-shadow: 4px 4px 2px #C2998E
}
```

Border

The CSS property to change the border of an element to Hex C2998E is called "border". The border property can be set on classes, ids or directly on the HTML element.

This example shows the color as border, it can be applied via the CSS property "border" or "border-color".

```
.border, #border, table{ border:4px solid
#C2998E }
```

If only the border color should be changed use the property `border-color`.

```
.border{ border-color:#C2998E }
```

If you want to add a box shadow in that color use:

Here you see how a box with a 4 pixel #C2998E colored shadow looks like.

```
.boxshadow{ -moz-box-shadow:4px 4px 4px  
4px #C2998E; -webkit-box-shadow:4px 4px  
4px 4px #C2998E; box-shadow:4px 4px 4px  
4px #C2998E }
```

Background

The CSS property to change the background color of an element to Hex C2998E is called "background". The background property can be set on classes, ids or directly on the HTML element.

```
.background, #background, body{  
background:#C2998E }
```

If only the background color should be changed can be used:

```
.background{ background-color:#C2998E }
```

This example shows the color as background, it is applied via the CSS property "background".

To optimize and compress your CSS code, you can use our [online CSS compressor and optimizer](#) based on csstidy. If you want to create a linear or radial gradient as background or border, check our [CSS Gradient Generator](#).

Hey! You found this booklet interesting? Support Converting Colors with the new Membership Option!

The pro membership hides all ads, plus gives you double the colors in the color bucket, and more awesome pro features!

[Learn more, Memberships starting at \\$2.50/m!](#)

**Follow me
on Twitter!**

@ConvertingColor