

# Converting Colors

Hex(C29B9B)

Have a look what the booklet for  
Hex(C29B9B) contains.

<b>Hex(C29B9B)</b> .....	3
<i><b>Conversions</b></i> .....	4
<i><b>Details</b></i> .....	6
<i><b>Harmonies</b></i> .....	11
<i><b>Previews</b></i> .....	23
<i><b>Color Blindness Simulation</b></i> .....	26
<i><b>CSS Examples</b></i> .....	29

# **Color**

**Hex(C29B9B)**

# Conversions

## Conversions Part 1

Format	Color
Hex	C29B9B
RGB	194, 155, 155
RGB Percent	76%, 61%, 61%
CMY	0.2392, 0.3922, 0.3922
CMYK	0.00, 0.20, 0.20, 0.24
HSL	0°, 24%, 68%
HSV	0°, 20%, 76%
XYZ	39.8859, 37.2786, 36.1036
YIQ	166.6610, 23.2440, 8.2680

# Conversions

## Conversions Part 2

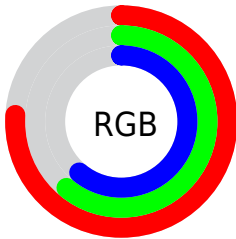
Format	Color
<a href="#">RYB</a>	<a href="#">194, 155, 155</a>
Decimal	<a href="#">12753819</a>
CIELab	<a href="#">67.49, 14.49, 5.51</a>
CIELCh	<a href="#">67, 15.499, 20.830</a>
Yxy	<a href="#">37.2786, 0.3521, 0.3291</a>
Android (android.graphics.Color)	<a href="#">4290943899</a> ( <a href="#">0xFFC29B9B</a> )
YUV	<a href="#">166.6610, -5.7489, 23.9763</a>
Hunter-Lab	<a href="#">61.0562, 9.7595, 7.6801</a>

# Details

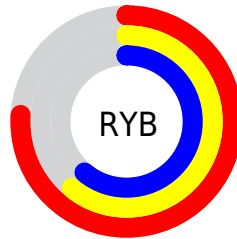
The Hex color **C29B9B** is a light color, and the websafe version is hex **CC9999**. A complement of this color would be **9BC2C2**, and the grayscale version is **A7A7A7**.

A 20% lighter version of the original color is **FBD2D1**, and **8C6868** is the 20% darker color. If you saturate the color by 10%, you get **C28888**, and if you desaturate by 10%, it is **C2AEAE**.

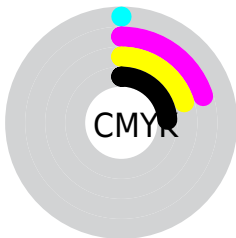
# Distribution



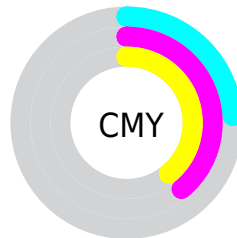
- Red (76%)
- Green (61%)
- Blue (61%)



- Red (76%)
- Yellow (61%)
- Blue (61%)



- Cyan (0%)
- Magenta (20%)
- Yellow (20%)
- Black (24%)



- Cyan (24%)
- Magenta (39%)
- Yellow (39%)

# Brightness & Saturation Gradients

These gradients show how the Hex color C29B9B changes by changing the brightness by 10 percent. The first figure shows a shift by +10% for each color and the second figure -10%.

Similar to the brightness gradients but the following saturation gradients show a change of the Hex color C29B9B by changing the saturation by 10% instead.





C29B9B



C29B9B

FFFFFF



A78181



FBD2D1



8C6868



FFEEEE



724F50



593839



412324



2A0E0E



0A0000



000000



C29B9B



C29B9B

 C28888

 C2AEAE

 C27474

 C2C2C2

 C26161

 C2D5D5

 C24D4D

 C2E9E9

 C23A3A

 C2FCFC

 C22727

 C2FFFF

 C21313

 C20000

# Harmonies

## Analogous

The Analogous color harmony consists of three colors that are next to each other on the color wheel.



BE9BA9



C29B9B



BE9E8F

# Triad

The Triadic color harmony groups three colors that are evenly spaced from another and form a triangle on the color wheel.



C29B9B



95AA92



90A7C0

# Complementary

The Complementary color scheme is a pair of colors which are on the opposite of each other on the color wheel.



C29B9B



9BC2C2

# Split Complementary

Split-complementary colors differ from the complementary color scheme. The scheme consists of three colors, the original color and two neighbors of the complement color.



83ABB9



C29B9B



87AC9F

# Square

The Square scheme is like the rectangle color scheme, but the four colors are evenly spaced on the color wheel.



C29B9B



A5A68A



80ACAE



A2A2BE

# Rectangle

The Rectangle color scheme consists of four colors that form a rectangle on the color wheel.



C29B9B



B8A08A



80ACAE



8BA8BE

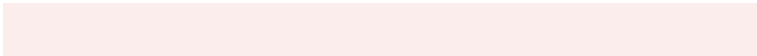


# Sweetspot

The Sweet Spot groups the original color and five complimentary colors.



C29B9B



FCEDED



C29BC2



807777



000000



808080



# Same Dimension

The Same Dimension uses a secret algorithm to generate beautiful new colors.



C29B9B



FCC0C0



C2AF9B



615757



A10000



210000

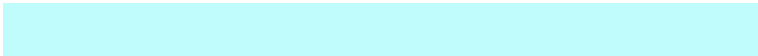


# Inverse Universe

The Inverse Universe completely reimagines the original color for something new.



9BC2C2



C0FCFC



9BAFC2



576161



00A1A1

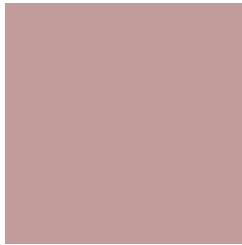


002121



# Previews

## White Background



This preview shows how the Hex color C29B9B looks on a white background.

## Color Contrast Check

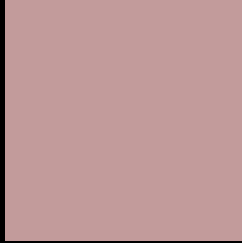
Large Text (above 18pt) WCAG AA × Fail

Any Text WCAG AA × Fail

Large Text (above 18pt) WCAG AAA × Fail

Any Text WCAG AAA × Fail

# Black Background



This preview shows how the Hex color C29B9B looks on a black background.

## Color Contrast Check

Large Text (above 18pt) WCAG AA ✓ Pass

Any Text WCAG AA ✓ Pass

Large Text (above 18pt) WCAG AAA ✓ Pass

Any Text WCAG AAA ✓ Pass

If you want to check with other color combinations, try the [Color Contrast Checker](#).



## Hex C29B9B Background



This preview shows how black text looks on a background with the Hex color C29B9B.

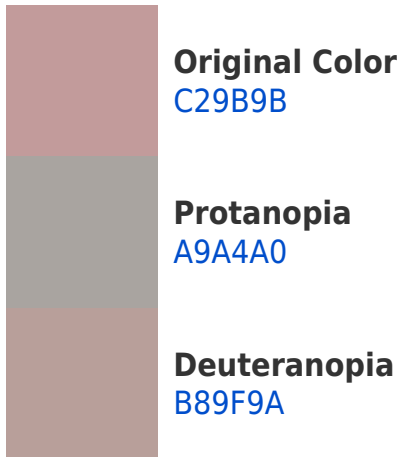


This preview shows how white text looks on a background with the Hex color C29B9B.

# Color Blindness Simulation

Color vision deficiency is a very complex topic, and I could not describe the different causes any better than Wikipedia does, so if you want to learn more, you should check out their [article about color blindness](#).

## Dichromacy





**Tritanopia**  
C399A5

# Trichromacy



**Original Color**  
C29B9B

**Protanomaly**  
B2A19E

**Deuteranomaly**  
BC9E9A

**Tritanomaly**  
C39AA1

# Monochromacy



**Original Color**  
C29B9B

**Achromatopsia**  
A7A7A7

**Achromatomaly**  
B1A3A3

# CSS Examples

## Text

The CSS property to change the color of the text to Hex C29B9B is called "color". The color property can be set on classes, ids or directly on the HTML element.

This example shows how text in the color #C29B9B looks like.

```
.text, #text, p{  
    color:#C29B9B  
}
```

If you want to add a text shadow in that color use the text-shadow property, you can generate a text shadow directly with our [CSS Text Shadow Generator](#).

Here you see how black text with a 4 pixel #C29B9B colored shadow looks like.

```
.shadow{ text-shadow: 4px 4px 2px #C29B9B
}
```

## Border

The CSS property to change the border of an element to Hex C29B9B is called "border". The border property can be set on classes, ids or directly on the HTML element.

This example shows the color as border, it can be applied via the CSS property "border" or "border-color".

```
.border, #border, table{ border:4px solid
#C29B9B }
```

If only the border color should be changed use the property `border-color`.

```
.border{ border-color:#C29B9B }
```

If you want to add a box shadow in that color use:

Here you see how a box with a 4 pixel #C29B9B colored shadow looks like.

```
.boxshadow{ -moz-box-shadow:4px 4px 4px  
4px #C29B9B; -webkit-box-shadow:4px 4px  
4px 4px #C29B9B; box-shadow:4px 4px 4px  
4px #C29B9B }
```

# Background

The CSS property to change the background color of an element to Hex C29B9B is called "background". The background property can be set on classes, ids or directly on the HTML element.

```
.background, #background, body{  
background:#C29B9B }
```

If only the background color should be changed can be used:

```
.background{ background-color:#C29B9B }
```

This example shows the color as background, it is applied via the CSS property "background".

To optimize and compress your CSS code, you can use our [online CSS compressor and optimizer](#) based on csstidy. If you want to create a linear or radial gradient as background or border, check our [CSS Gradient Generator](#).



Hey! You found this booklet interesting? Support Converting Colors with the new Membership Option!

The pro membership hides all ads, plus gives you double the colors in the color bucket, and more awesome pro features!

**[Learn more, Memberships starting at \\$2.50/m!](#)**

**Follow me  
on Twitter!**

@ConvertingColor