

# Converting Colors

Hex(C29B9D)

Have a look what the booklet for  
Hex(C29B9D) contains.

<b>Hex(C29B9D)</b> .....	3
<i><b>Conversions</b></i> .....	4
<i><b>Details</b></i> .....	6
<i><b>Harmonies</b></i> .....	11
<i><b>Previews</b></i> .....	23
<i><b>Color Blindness Simulation</b></i> .....	26
<i><b>CSS Examples</b></i> .....	29

# **Color**

**Hex(C29B9D)**

# Conversions

## Conversions Part 1

Format	Color
Hex	C29B9D
RGB	194, 155, 157
RGB Percent	76%, 61%, 62%
CMY	0.2392, 0.3922, 0.3843
CMYK	0.00, 0.20, 0.19, 0.24
HSL	357°, 24%, 68%
HSV	357°, 20%, 76%
XYZ	40.0553, 37.3463, 36.9957
YIQ	166.8890, 22.6020, 8.8900

# Conversions

## Conversions Part 2

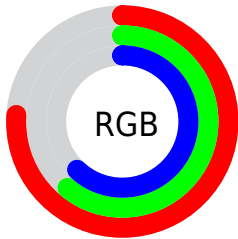
Format	Color
<a href="#">RYB</a>	<a href="#">194, 155, 157</a>
Decimal	<a href="#">12753821</a>
CIELab	<a href="#">67.54, 14.80, 4.47</a>
CIElCh	<a href="#">68, 15.457, 16.801</a>
Yxy	<a href="#">37.3463, 0.3501, 0.3265</a>
Android (android.graphics.Color)	<a href="#">4290943901</a> ( <a href="#">0xFFC29B9D</a> )
YUV	<a href="#">166.8890, -4.8753, 23.7763</a>
Hunter-Lab	<a href="#">61.1117, 10.0514, 6.8852</a>

# Details

The Hex color **C29B9D** is a light color, and the websafe version is hex **CC9999**. A complement of this color would be **9BC2C0**, and the grayscale version is **A7A7A7**.

A 20% lighter version of the original color is **FBD2D3**, and **8C686A** is the 20% darker color. If you saturate the color by 10%, you get **C2888B**, and if you desaturate by 10%, it is **C2AEAF**.

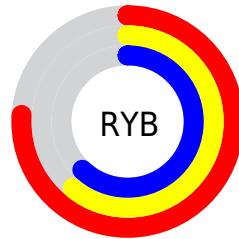
# Distribution



Red (76%)

Green (61%)

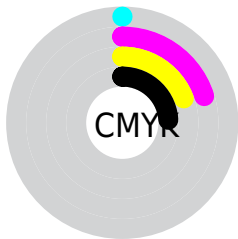
Blue (62%)



Red (76%)

Yellow (61%)

Blue (62%)

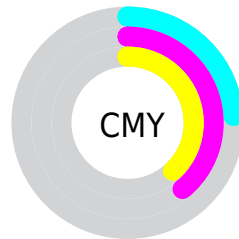


Cyan (0%)

Magenta (20%)

Yellow (19%)

Black (24%)



Cyan (24%)

Magenta (39%)

Yellow (38%)

# Brightness & Saturation Gradients

These gradients show how the Hex color C29B9D changes by changing the brightness by 10 percent. The first figure shows a shift by +10% for each color and the second figure -10%.

Similar to the brightness gradients but the following saturation gradients show a change of the Hex color C29B9D by changing the saturation by 10% instead.



 C29B9D

 C29B9D

FFFFFF

 A78183

 FBD2D3

 8C686A

 FFEEF0

 724F52

 59383B

 412225

 2A0E10

 0B0000

 000000

 C29B9D

 C29B9D

 C2888B

 C2AEAF

 C27478

 C2C2C2

 C26166

 C2D5D4

 C24D53

 C2E9E7

 C23A41

 C2FCF9

 C2272F

 C2FFFF

 C2131C

 C2000A

# Harmonies

## Analogous

The Analogous color harmony consists of three colors that are next to each other on the color wheel.



BD9BAB



C29B9D



BF9D91

# Triad

The Triadic color harmony groups three colors that are evenly spaced from another and form a triangle on the color wheel.



C29B9D



97AA91



8EA8BF

# Complementary

The Complementary color scheme is a pair of colors which are on the opposite of each other on the color wheel.



C29B9D



9BC2C0

# Split Complementary

Split-complementary colors differ from the complementary color scheme. The scheme consists of three colors, the original color and two neighbors of the complement color.



82ABB8



C29B9D



89AC9E

# Square

The Square scheme is like the rectangle color scheme, but the four colors are evenly spaced on the color wheel.



C29B9D



A7A68A



81ADAC



9FA3BF

# Rectangle

The Rectangle color scheme consists of four colors that form a rectangle on the color wheel.



C29B9D



B9A08B



81ADAC



89A9BE

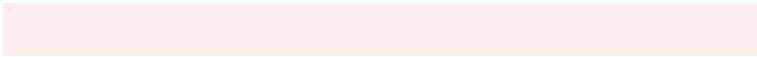


# Sweetspot

The Sweet Spot groups the original color and five complimentary colors.



C29B9D



FCEDEE



BF9BC2



807777



000000



808080



# Same Dimension

The Same Dimension uses a secret algorithm to generate beautiful new colors.



C29B9D



FCC0C3



C2AC9B



615758



A10008



210002



# Inverse Universe

The Inverse Universe completely reimagines the original color for something new.



C29B9D



FCC0C3



9BB1C2



615758



A10008

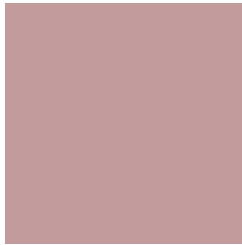


210002



# Previews

## White Background



This preview shows how the Hex color C29B9D looks on a white background.

## Color Contrast Check

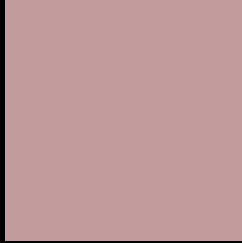
Large Text (above 18pt) WCAG AA × Fail

Any Text WCAG AA × Fail

Large Text (above 18pt) WCAG AAA × Fail

Any Text WCAG AAA × Fail

# Black Background



This preview shows how the Hex color C29B9D looks on a black background.

## Color Contrast Check

Large Text (above 18pt) WCAG AA ✓ Pass

Any Text WCAG AA ✓ Pass

Large Text (above 18pt) WCAG AAA ✓ Pass

Any Text WCAG AAA ✓ Pass

If you want to check with other color combinations, try the [Color Contrast Checker](#).



## Hex C29B9D Background



This preview shows how black text looks on a background with the Hex color C29B9D.



This preview shows how white text looks on a background with the Hex color C29B9D.

# Color Blindness Simulation

Color vision deficiency is a very complex topic, and I could not describe the different causes any better than Wikipedia does, so if you want to learn more, you should check out their [article about color blindness](#).

## Dichromacy



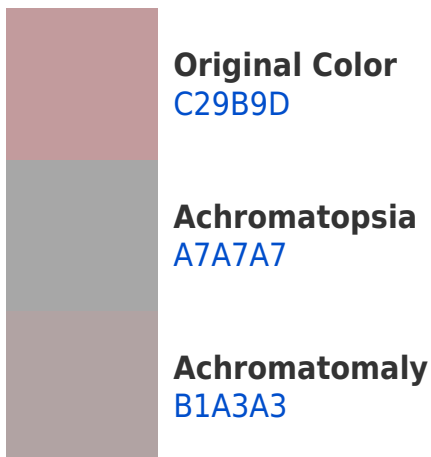


**Tritanopia**  
C39AA6

# Trichromacy



# Monochromacy



# CSS Examples

## Text

The CSS property to change the color of the text to Hex C29B9D is called "color". The color property can be set on classes, ids or directly on the HTML element.

This example shows how text in the color #C29B9D looks like.

```
.text, #text, p{  
    color:#C29B9D  
}
```

If you want to add a text shadow in that color use the text-shadow property, you can generate a text shadow directly with our [CSS Text Shadow Generator](#).

Here you see how black text with a 4 pixel #C29B9D colored shadow looks like.

```
.shadow{ text-shadow: 4px 4px 2px #C29B9D
}
```

## Border

The CSS property to change the border of an element to Hex C29B9D is called "border". The border property can be set on classes, ids or directly on the HTML element.

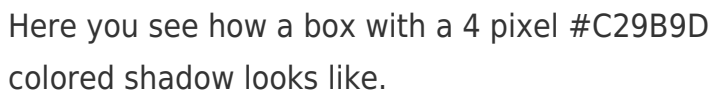
This example shows the color as border, it can be applied via the CSS property "border" or "border-color".

```
.border, #border, table{ border:4px solid
#C29B9D }
```

If only the border color should be changed use the property `border-color`.

```
.border{ border-color:#C29B9D }
```

If you want to add a box shadow in that color use:



Here you see how a box with a 4 pixel #C29B9D colored shadow looks like.

```
.boxshadow{ -moz-box-shadow:4px 4px 4px  
4px #C29B9D; -webkit-box-shadow:4px 4px  
4px 4px #C29B9D; box-shadow:4px 4px 4px  
4px #C29B9D }
```

# Background

The CSS property to change the background color of an element to Hex C29B9D is called "background". The background property can be set on classes, ids or directly on the HTML element.

```
.background, #background, body{  
background:#C29B9D }
```

If only the background color should be changed can be used:

```
.background{ background-color:#C29B9D }
```

This example shows the color as background, it is applied via the CSS property "background".

To optimize and compress your CSS code, you can use our [online CSS compressor and optimizer](#) based on csstidy. If you want to create a linear or radial gradient as background or border, check our [CSS Gradient Generator](#).



Hey! You found this booklet interesting? Support Converting Colors with the new Membership Option!

The pro membership hides all ads, plus gives you double the colors in the color bucket, and more awesome pro features!

**[Learn more, Memberships starting at \\$2.50/m!](#)**

**Follow me  
on Twitter!**

@ConvertingColor