

# Converting Colors

Hex(C29C8B)

Have a look what the booklet for  
Hex(C29C8B) contains.

<b>Hex(C29C8B)</b> .....	3
<i><b>Conversions</b></i> .....	4
<i><b>Details</b></i> .....	6
<i><b>Harmonies</b></i> .....	11
<i><b>Previews</b></i> .....	23
<i><b>Color Blindness Simulation</b></i> .....	26
<i><b>CSS Examples</b></i> .....	29

**Color**

**Hex(C29C8B)**

# Conversions

## Conversions Part 1

<b>Format</b>	<b>Color</b>
Hex	C29C8B
RGB	194, 156, 139
RGB Percent	76%, 61%, 55%
CMY	0.2392, 0.3882, 0.4549
CMYK	0.00, 0.20, 0.28, 0.24
HSL	19°, 31%, 65%
HSV	19°, 28%, 76%
XYZ	38.7968, 37.1103, 29.5443
YIQ	165.4240, 28.1050, 2.7690

# Conversions

## Conversions Part 2

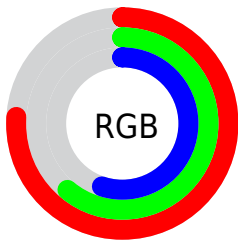
Format	Color
<a href="#">RYB</a>	<a href="#">194, 164, 139</a>
Decimal	<a href="#">12754059</a>
CIELab	<a href="#">67.36, 11.59, 14.24</a>
CIELCh	<a href="#">67, 18.364, 50.866</a>
Yxy	<a href="#">37.1103, 0.3679, 0.3519</a>
Android (android.graphics.Color)	<a href="#">4290944139</a> ( <a href="#">0xFFC29C8B</a> )
YUV	<a href="#">165.4240, -13.0270, 25.0612</a>
Hunter-Lab	<a href="#">60.9183, 7.0737, 13.8882</a>

# Details

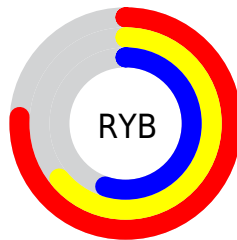
The Hex color **C29C8B** is a light color, and the websafe version is hex **CC9999**. A complement of this color would be **8BB1C2**, and the grayscale version is **A6A6A6**.

A 20% lighter version of the original color is **FBD3C1**, and **8B6959** is the 20% darker color. If you saturate the color by 10%, you get **C28F78**, and if you desaturate by 10%, it is **C2A99E**.

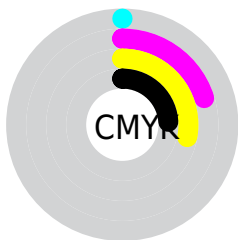
# Distribution



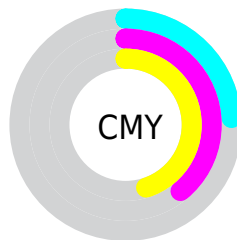
- Red (76%)
- Green (61%)
- Blue (55%)



- Red (76%)
- Yellow (64%)
- Blue (55%)



- Cyan (0%)
- Magenta (20%)
- Yellow (28%)
- Black (24%)



- Cyan (24%)
- Magenta (39%)
- Yellow (45%)

# Brightness & Saturation Gradients

These gradients show how the Hex color C29C8B changes by changing the brightness by 10 percent. The first figure shows a shift by +10% for each color and the second figure -10%.

Similar to the brightness gradients but the following saturation gradients show a change of the Hex color C29C8B by changing the saturation by 10% instead.





C29C8B



C29C8B

FFFFFF



A68272



FBD3C1



8B6959



FFEFD8



715142



FFFF99



58392B



3F2417



290F00



010000



000000



C29C8B



C29C8B

 C28F78

 C2A99E

 C28164

 C2B7B2

 C27451

 C2C4C5

 C2663D

 C2D2D9

 C2592A

 C2DFEC

 C24C17

 C2ECFF

 C23E03

 C2FAFF

 C23C00

 C2FFFF

# Harmonies

## Analogous

The Analogous color harmony consists of three colors that are next to each other on the color wheel.



C79999



C29C8B



B6A184

# Triad

The Triadic color harmony groups three colors that are evenly spaced from another and form a triangle on the color wheel.



C29C8B



81AD9E



A0A2C3

# Complementary

The Complementary color scheme is a pair of colors which are on the opposite of each other on the color wheel.



C29C8B



8BB1C2

# Split Complementary

Split-complementary colors differ from the complementary color scheme. The scheme consists of three colors, the original color and two neighbors of the complement color.



8BA7C4



C29C8B



78ADAF

# Square

The Square scheme is like the rectangle color scheme, but the four colors are evenly spaced on the color wheel.



C29C8B



92AB8F



7BABBD



B59CB9

# Rectangle

The Rectangle color scheme consists of four colors that form a rectangle on the color wheel.



C29C8B



ABA584



7BABBD



99A3C4

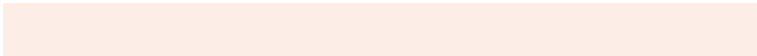


# Sweetspot

The Sweet Spot groups the original color and five complimentary colors.



C29C8B



FCEDE6



C28BB2



807671



000000



808080



# Same Dimension

The Same Dimension uses a secret algorithm to generate beautiful new colors.



C29C8B



FCC1A7



C2B78B



615A57



A13200



210A00

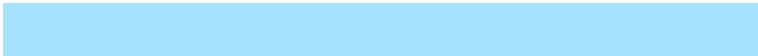


# Inverse Universe

The Inverse Universe completely reimagines the original color for something new.



8BB1C2



A7E2FC



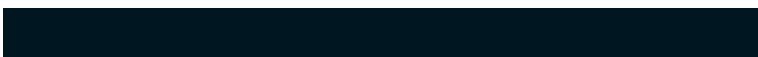
8B96C2



575E61



006FA1



001721



# Previews

## White Background



This preview shows how the Hex color C29C8B looks on a white background.

## Color Contrast Check

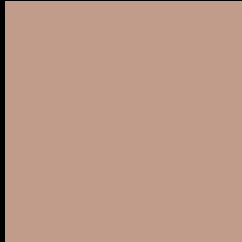
Large Text (above 18pt) WCAG AA × Fail

Any Text WCAG AA × Fail

Large Text (above 18pt) WCAG AAA × Fail

Any Text WCAG AAA × Fail

# Black Background



This preview shows how the Hex color C29C8B looks on a black background.

## Color Contrast Check

Large Text (above 18pt) WCAG AA ✓ Pass

Any Text WCAG AA ✓ Pass

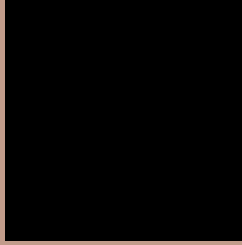
Large Text (above 18pt) WCAG AAA ✓ Pass

Any Text WCAG AAA ✓ Pass

If you want to check with other color combinations, try the [Color Contrast Checker](#).



## Hex C29C8B Background



This preview shows how black text looks on a background with the Hex color C29C8B.



This preview shows how white text looks on a background with the Hex color C29C8B.

# Color Blindness Simulation

Color vision deficiency is a very complex topic, and I could not describe the different causes any better than Wikipedia does, so if you want to learn more, you should check out their [article about color blindness](#).

## Dichromacy



**Original Color**  
C29C8B

**Protanopia**  
ACA48F

**Deuteranopia**  
BD9E8B

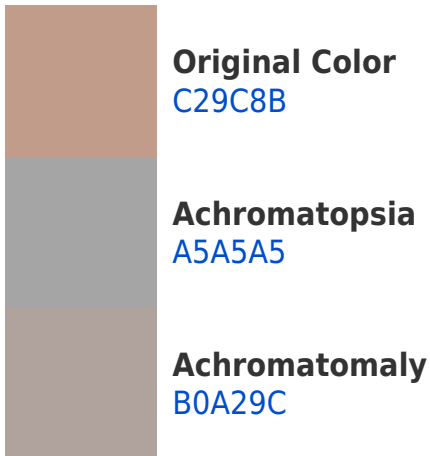


**Tritanopia**  
C598A4

# Trichromacy



# Monochromacy



# CSS Examples

## Text

The CSS property to change the color of the text to Hex C29C8B is called "color". The color property can be set on classes, ids or directly on the HTML element.

This example shows how text in the color #C29C8B looks like.

```
.text, #text, p{  
    color:#C29C8B  
}
```

If you want to add a text shadow in that color use the text-shadow property, you can generate a text shadow directly with our [CSS Text Shadow Generator](#).

Here you see how black text with a 4 pixel #C29C8B colored shadow looks like.

```
.shadow{ text-shadow: 4px 4px 2px #C29C8B
}
```

## Border

The CSS property to change the border of an element to Hex C29C8B is called "border". The border property can be set on classes, ids or directly on the HTML element.

This example shows the color as border, it can be applied via the CSS property "border" or "border-color".

```
.border, #border, table{ border:4px solid
#C29C8B }
```

If only the border color should be changed use the property `border-color`.

```
.border{ border-color:#C29C8B }
```

If you want to add a box shadow in that color use:

Here you see how a box with a 4 pixel #C29C8B colored shadow looks like.

```
.boxshadow{ -moz-box-shadow:4px 4px 4px  
4px #C29C8B; -webkit-box-shadow:4px 4px  
4px 4px #C29C8B; box-shadow:4px 4px 4px  
4px #C29C8B }
```

# Background

The CSS property to change the background color of an element to Hex C29C8B is called "background". The background property can be set on classes, ids or directly on the HTML element.

```
.background, #background, body{  
background:#C29C8B }
```

If only the background color should be changed can be used:

```
.background{ background-color:#C29C8B }
```

This example shows the color as background, it is applied via the CSS property "background".

To optimize and compress your CSS code, you can use our [online CSS compressor and optimizer](#) based on csstidy. If you want to create a linear or radial gradient as background or border, check our [CSS Gradient Generator](#).



Hey! You found this booklet interesting? Support Converting Colors with the new Membership Option!

The pro membership hides all ads, plus gives you double the colors in the color bucket, and more awesome pro features!

**[Learn more, Memberships starting at \\$2.50/m!](#)**

**Follow me  
on Twitter!**

@ConvertingColor