

# Converting Colors

Hex(C29F9D)

Have a look what the booklet for  
Hex(C29F9D) contains.

<b>Hex(C29F9D)</b> .....	3
<b><i>Conversions</i></b> .....	4
<b><i>Details</i></b> .....	6
<b><i>Harmonies</i></b> .....	11
<b><i>Previews</i></b> .....	23
<b><i>Color Blindness Simulation</i></b> .....	26
<b><i>CSS Examples</i></b> .....	29

# **Color**

**Hex(C29F9D)**

# Conversions

## Conversions Part 1

Format	Color
Hex	C29F9D
RGB	194, 159, 157
RGB Percent	76%, 62%, 62%
CMY	0.2392, 0.3765, 0.3843
CMYK	0.00, 0.18, 0.19, 0.24
HSL	3°, 23%, 69%
HSV	3°, 19%, 76%
XYZ	40.7321, 38.6999, 37.2213
YIQ	169.2370, 21.5020, 6.7980

# Conversions

## Conversions Part 2

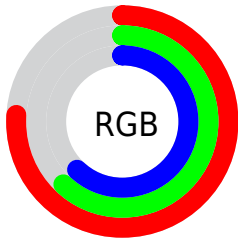
<b>Format</b>	<b>Color</b>
<a href="#">RYB</a>	<a href="#">194, 159, 157</a>
Decimal	<a href="#">12754845</a>
CIELab	<a href="#">68.53, 12.60, 5.90</a>
CIELCh	<a href="#">69, 13.913, 25.110</a>
Yxy	<a href="#">38.6999, 0.3492, 0.3318</a>
Android (android.graphics.Color)	<a href="#">4290944925</a> ( <a href="#">0xFFC29F9D</a> )
YUV	<a href="#">169.2370, -6.0328, 21.7172</a>
Hunter-Lab	<a href="#">62.2093, 8.0083, 8.0718</a>

# Details

The Hex color **C29F9D** is a light color, and the websafe version is hex **CC9999**. A complement of this color would be **9DC0C2**, and the grayscale version is **A9A9A9**.

A 20% lighter version of the original color is **FBD6D4**, and **8C6B6A** is the 20% darker color. If you saturate the color by 10%, you get **C28D8A**, and if you desaturate by 10%, it is **C2B1B0**.

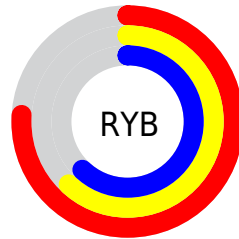
# Distribution



Red (76%)

Green (62%)

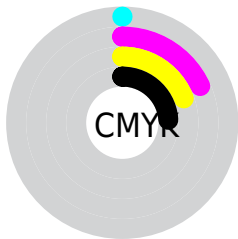
Blue (62%)



Red (76%)

Yellow (62%)

Blue (62%)

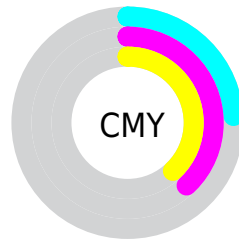


Cyan (0%)

Magenta (18%)

Yellow (19%)

Black (24%)



Cyan (24%)

Magenta (38%)

Yellow (38%)

# Brightness & Saturation Gradients

These gradients show how the Hex color C29F9D changes by changing the brightness by 10 percent. The first figure shows a shift by +10% for each color and the second figure -10%.

Similar to the brightness gradients but the following saturation gradients show a change of the Hex color C29F9D by changing the saturation by 10% instead.



 C29F9D

FFFFFF

 FBD6D4

 FFF2F0

 C29F9D

 A78583

 8C6B6A

 725352

 593C3B

 412625

 2A1110

 0F0000

 000000

 C29F9D

 C29F9D

 C28D8A

 C2B1B0

 C27A76

 C2C4C4

 C26863

 C2D6D7

 C2564F

 C2E8EB

 C2433C

 C2FBFE

 C23129

 C2FFFF

 C21F15

 C20C02

 C20A00

# Harmonies

## Analogous

The Analogous color harmony consists of three colors that are next to each other on the color wheel.



BF9FAA



C29F9D



BEA293

# Triad

The Triadic color harmony groups three colors that are evenly spaced from another and form a triangle on the color wheel.



C29F9D



97AD98



97A9C0

# Complementary

The Complementary color scheme is a pair of colors which are on the opposite of each other on the color wheel.



C29F9D



9DC0C2

# Split Complementary

Split-complementary colors differ from the complementary color scheme. The scheme consists of three colors, the original color and two neighbors of the complement color.



8BACBB



C29F9D



8CAEA5

# Square

The Square scheme is like the rectangle color scheme, but the four colors are evenly spaced on the color wheel.



C29F9D



A6AA90



87AEB1



A7A5BE

# Rectangle

The Rectangle color scheme consists of four colors that form a rectangle on the color wheel.



C29F9D



B7A48F



87AEB1



92AABF

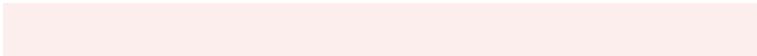


# Sweetspot

The Sweet Spot groups the original color and five complimentary colors.



C29F9D



FCEEED



C29DC0



807777



000000



808080



# Same Dimension

The Same Dimension uses a secret algorithm to generate beautiful new colors.



C29F9D



FCC6C2



C2B19D



615857



A10900



210200



# Inverse Universe

The Inverse Universe completely reimagines the original color for something new.



9DC0C2



C2F9FC



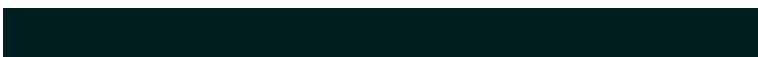
9DAEC2



576061



0098A1

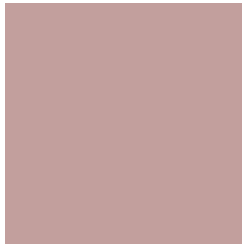


001F21



# Previews

## White Background



This preview shows how the Hex color C29F9D looks on a white background.

## Color Contrast Check

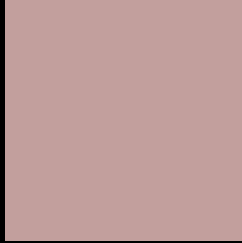
Large Text (above 18pt) WCAG AA × Fail

Any Text WCAG AA × Fail

Large Text (above 18pt) WCAG AAA × Fail

Any Text WCAG AAA × Fail

# Black Background



This preview shows how the Hex color C29F9D looks on a black background.

## Color Contrast Check

Large Text (above 18pt) WCAG AA ✓ Pass

Any Text WCAG AA ✓ Pass

Large Text (above 18pt) WCAG AAA ✓ Pass

Any Text WCAG AAA ✓ Pass

If you want to check with other color combinations, try the [Color Contrast Checker](#).



## Hex C29F9D Background



This preview shows how black text looks on a background with the Hex color C29F9D.



This preview shows how white text looks on a background with the Hex color C29F9D.

# Color Blindness Simulation

Color vision deficiency is a very complex topic, and I could not describe the different causes any better than Wikipedia does, so if you want to learn more, you should check out their [article about color blindness](#).

## Dichromacy



**Original Color**  
C29F9D

**Protanopia**  
ACA7A1

**Deuteranopia**  
BCA29D



**Tritanopia**  
C39DA9

# Trichromacy



**Original Color**  
C29F9D

**Protanomaly**  
B4A4A0

**Deuteranomaly**  
BEA19D

**Tritanomaly**  
C39EA5

# Monochromacy



**Original Color**  
C29F9D

**Achromatopsia**  
A9A9A9

**Achromatomaly**  
B2A5A5

# CSS Examples

## Text

The CSS property to change the color of the text to Hex C29F9D is called "color". The color property can be set on classes, ids or directly on the HTML element.

This example shows how text in the color #C29F9D looks like.

```
.text, #text, p{  
    color:#C29F9D  
}
```

If you want to add a text shadow in that color use the text-shadow property, you can generate a text shadow directly with our [CSS Text Shadow Generator](#).

Here you see how black text with a 4 pixel #C29F9D colored shadow looks like.

```
.shadow{ text-shadow: 4px 4px 2px #C29F9D
}
```

## Border

The CSS property to change the border of an element to Hex C29F9D is called "border". The border property can be set on classes, ids or directly on the HTML element.

This example shows the color as border, it can be applied via the CSS property "border" or "border-color".

```
.border, #border, table{ border:4px solid
#C29F9D }
```

If only the border color should be changed use the property `border-color`.

```
.border{ border-color:#C29F9D }
```

If you want to add a box shadow in that color use:

Here you see how a box with a 4 pixel #C29F9D colored shadow looks like.

```
.boxshadow{ -moz-box-shadow:4px 4px 4px  
4px #C29F9D; -webkit-box-shadow:4px 4px  
4px 4px #C29F9D; box-shadow:4px 4px 4px  
4px #C29F9D }
```

# Background

The CSS property to change the background color of an element to Hex C29F9D is called "background". The background property can be set on classes, ids or directly on the HTML element.

```
.background, #background, body{  
background:#C29F9D }
```

If only the background color should be changed can be used:

```
.background{ background-color:#C29F9D }
```

This example shows the color as background, it is applied via the CSS property "background".

To optimize and compress your CSS code, you can use our [online CSS compressor and optimizer](#) based on csstidy. If you want to create a linear or radial gradient as background or border, check our [CSS Gradient Generator](#).



Hey! You found this booklet interesting? Support Converting Colors with the new Membership Option!

The pro membership hides all ads, plus gives you double the colors in the color bucket, and more awesome pro features!

**[Learn more, Memberships starting at \\$2.50/m!](#)**

**Follow me  
on Twitter!**

@ConvertingColor