

Converting Colors

Hex(C29FA0)

Have a look what the booklet for
Hex(C29FA0) contains.

Hex(C29FA0)	3
<i>Conversions</i>	4
<i>Details</i>	6
<i>Harmonies</i>	11
<i>Previews</i>	23
<i>Color Blindness Simulation</i>	26
<i>CSS Examples</i>	29

Color

Hex(C29FA0)

Conversions

Conversions Part 1

Format	Color
Hex	C29FA0
RGB	194, 159, 160
RGB Percent	76%, 62%, 63%
CMY	0.2392, 0.3765, 0.3725
CMYK	0.00, 0.18, 0.18, 0.24
HSL	358°, 22%, 69%
HSV	358°, 18%, 76%
XYZ	40.9914, 38.8037, 38.5871
YIQ	169.5790, 20.5390, 7.7310

Conversions

Conversions Part 2

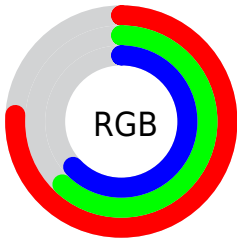
Format	Color
RYB	194, 159, 160
Decimal	12754848
CIELab	68.61, 13.07, 4.34
CIElCh	69, 13.775, 18.384
Yxy	38.8037, 0.3463, 0.3278
Android (android.graphics.Color)	4290944928 (0xFFC29FA0)
YUV	169.5790, -4.7224, 21.4172
Hunter-Lab	62.2926, 8.4493, 6.8777

Details

The Hex color **C29FA0** is a light color, and the websafe version is hex **CC9999**. A complement of this color would be **9FC2C1**, and the grayscale version is **AAAAAA**.

A 20% lighter version of the original color is **FBD6D7**, and **8C6B6D** is the 20% darker color. If you saturate the color by 10%, you get **C28C8D**, and if you desaturate by 10%, it is **C2B2B3**.

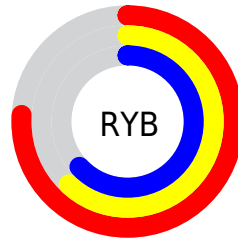
Distribution



Red (76%)

Green (62%)

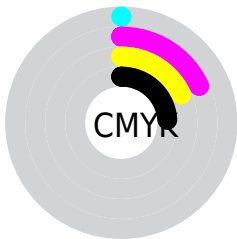
Blue (63%)



Red (76%)

Yellow (62%)

Blue (63%)

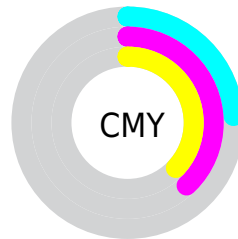


Cyan (0%)

Magenta (18%)

Yellow (18%)

Black (24%)



Cyan (24%)

Magenta (38%)

Yellow (37%)

Brightness & Saturation Gradients

These gradients show how the Hex color C29FA0 changes by changing the brightness by 10 percent. The first figure shows a shift by +10% for each color and the second figure -10%.

Similar to the brightness gradients but the following saturation gradients show a change of the Hex color C29FA0 by changing the saturation by 10% instead.

 C29FA0

 C29FA0

FFFFFF

 A78586

 FBD6D7

 8C6B6D


 FFF2F3

 725354

 593C3D

 412628

 2A1113

 110000

 000000

 C29FA0

 C29FA0

 C28C8D

 C2B2B3

 C2787A

 C2C6C6

 C26567

 C2D9D9

 C25155

 C2EDEB

 C23E42

 C2FFFE

 C22B2F

 C2FFFF

 C2171C

 C20409

 C20006

Harmonies

Analogous

The Analogous color harmony consists of three colors that are next to each other on the color wheel.



BE9FAD



C29FA0



BFA195

Triad

The Triadic color harmony groups three colors that are evenly spaced from another and form a triangle on the color wheel.



C29FA0



9BAC97



94AABF

Complementary

The Complementary color scheme is a pair of colors which are on the opposite of each other on the color wheel.



C29FA0



9FC2C1

Split Complementary

Split-complementary colors differ from the complementary color scheme. The scheme consists of three colors, the original color and two neighbors of the complement color.



8AADB9



C29FA0



8EAEA2

Square

The Square scheme is like the rectangle color scheme, but the four colors are evenly spaced on the color wheel.



C29FA0



A9A990



88AFAF



A4A6BF

Rectangle

The Rectangle color scheme consists of four colors that form a rectangle on the color wheel.



C29FA0



BAA391



88AF AF



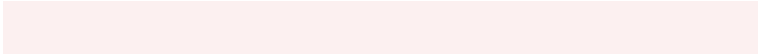
90ABBE

Sweetspot

The Sweet Spot groups the original color and five complimentary colors.



C29FA0



FCF0F0



C19FC2



807878



000000



808080

Same Dimension

The Same Dimension uses a secret algorithm to generate beautiful new colors.



C29FA0



FCC5C6



C2AF9F



615757



A10005



210001

Inverse Universe

The Inverse Universe completely reimagines the original color for something new.



C29FA0



FCC5C6



9FB2C2



615757



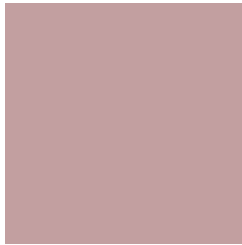
A10005



210001

Previews

White Background



This preview shows how the Hex color C29FA0 looks on a white background.

Color Contrast Check

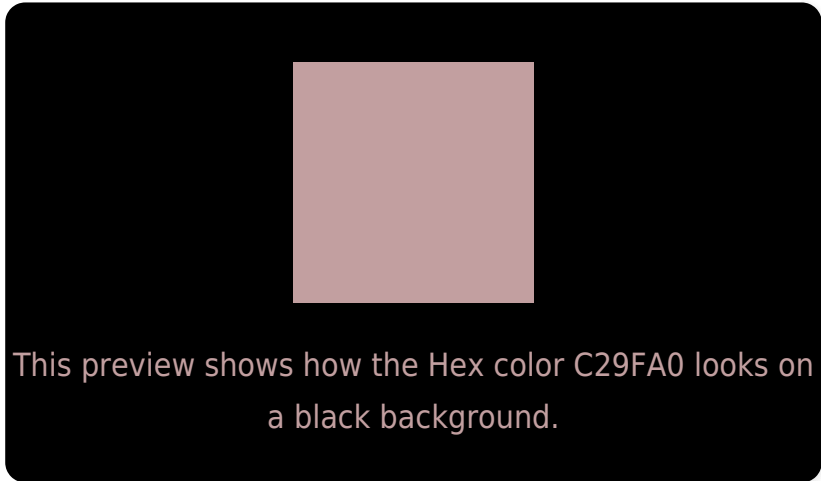
Large Text (above 18pt) WCAG AA × Fail

Any Text WCAG AA × Fail

Large Text (above 18pt) WCAG AAA × Fail

Any Text WCAG AAA × Fail

Black Background



Color Contrast Check

Large Text (above 18pt) WCAG AA ✓ Pass

Any Text WCAG AA ✓ Pass

Large Text (above 18pt) WCAG AAA ✓ Pass

Any Text WCAG AAA ✓ Pass

If you want to check with other color combinations, try the [Color Contrast Checker](#).

Hex C29FA0 Background



This preview shows how black text looks on a background with the Hex color C29FA0.

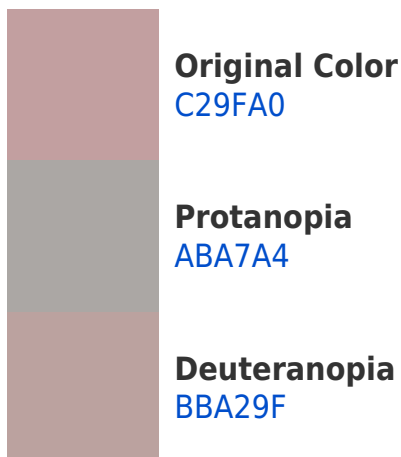


This preview shows how white text looks on a background with the Hex color C29FA0.

Color Blindness Simulation

Color vision deficiency is a very complex topic, and I could not describe the different causes any better than Wikipedia does, so if you want to learn more, you should check out their [article about color blindness](#).

Dichromacy





Tritanopia
C39DAA

Trichromacy



Original Color
C29FA0

Protanomaly
B3A4A3

Deuteranomaly
BEA19F

Tritanomaly
C39EA6

Monochromacy



Original Color
C29FA0

Achromatopsia
AAAAAA

Achromatomaly
B3A6A6

CSS Examples

Text

The CSS property to change the color of the text to Hex C29FA0 is called "color". The color property can be set on classes, ids or directly on the HTML element.

This example shows how text in the color #C29FA0 looks like.

```
.text, #text, p{  
    color:#C29FA0  
}
```

If you want to add a text shadow in that color use the text-shadow property, you can generate a text shadow directly with our [CSS Text Shadow Generator](#).

Here you see how black text with a 4 pixel #C29FA0 colored shadow looks like.

```
.shadow{ text-shadow: 4px 4px 2px #C29FA0
}
```

Border

The CSS property to change the border of an element to Hex C29FA0 is called "border". The border property can be set on classes, ids or directly on the HTML element.

This example shows the color as border, it can be applied via the CSS property "border" or "border-color".

```
.border, #border, table{ border:4px solid
#C29FA0 }
```

If only the border color should be changed use the property border-color.

```
.border{ border-color:#C29FA0 }
```

If you want to add a box shadow in that color use:

Here you see how a box with a 4 pixel #C29FA0 colored shadow looks like.

```
.boxshadow{ -moz-box-shadow:4px 4px 4px  
4px #C29FA0; -webkit-box-shadow:4px 4px  
4px 4px #C29FA0; box-shadow:4px 4px 4px  
4px #C29FA0 }
```

Background

The CSS property to change the background color of an element to Hex C29FA0 is called "background". The background property can be set on classes, ids or directly on the HTML element.

```
.background, #background, body{  
background:#C29FA0 }
```

If only the background color should be changed can be used:

```
.background{ background-color:#C29FA0 }
```

This example shows the color as background, it is applied via the CSS property "background".

To optimize and compress your CSS code, you can use our [online CSS compressor and optimizer](#) based on csstidy. If you want to create a linear or radial gradient as background or border, check our [CSS Gradient Generator](#).

Hey! You found this booklet interesting? Support Converting Colors with the new Membership Option!

The pro membership hides all ads, plus gives you double the colors in the color bucket, and more awesome pro features!

[Learn more, Memberships starting at \\$2.50/m!](#)

**Follow me
on Twitter!**

@ConvertingColor