

# Converting Colors

Hex(C2A1A4)

Have a look what the booklet for  
Hex(C2A1A4) contains.

<b>Hex(C2A1A4)</b> .....	3
<b><i>Conversions</i></b> .....	4
<b><i>Details</i></b> .....	6
<b><i>Harmonies</i></b> .....	11
<b><i>Previews</i></b> .....	23
<b><i>Color Blindness Simulation</i></b> .....	26
<b><i>CSS Examples</i></b> .....	29

# **Color**

**Hex(C2A1A4)**

# Conversions

## Conversions Part 1

Format	Color
Hex	C2A1A4
RGB	194, 161, 164
RGB Percent	76%, 63%, 64%
CMY	0.2392, 0.3686, 0.3569
CMYK	0.00, 0.17, 0.15, 0.24
HSL	355°, 21%, 70%
HSV	355°, 17%, 76%
XYZ	41.6938, 39.6394, 40.5756
YIQ	171.2090, 18.7050, 7.9290

# Conversions

## Conversions Part 2

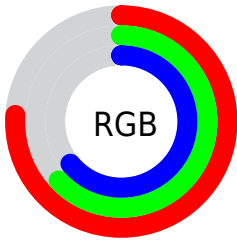
Format	Color
<a href="#">RYB</a>	<a href="#">194, 161, 164</a>
Decimal	<a href="#">12755364</a>
CIELab	<a href="#">69.21, 12.62, 2.99</a>
CIElCh	<a href="#">69, 12.968, 13.347</a>
Yxy	<a href="#">39.6394, 0.3420, 0.3252</a>
Android (android.graphics.Color)	<a href="#">4290945444 (0xFFC2A1A4)</a>
YUV	<a href="#">171.2090, -3.5540, 19.9877</a>
Hunter-Lab	<a href="#">62.9598, 8.0282, 5.8614</a>

# Details

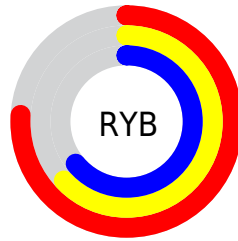
The Hex color **C2A1A4** is a light color, and the websafe version is hex **CC9999**. A complement of this color would be **A1C2BF**, and the grayscale version is **ABABAB**.

A 20% lighter version of the original color is **FBD8DB**, and **8C6D70** is the 20% darker color. If you saturate the color by 10%, you get **C28E92**, and if you desaturate by 10%, it is **C2B4B6**.

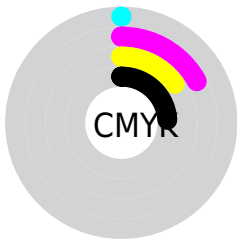
# Distribution



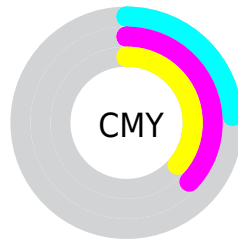
- Red (76%)
- Green (63%)
- Blue (64%)



- Red (76%)
- Yellow (63%)
- Blue (64%)



- Cyan (0%)
- Magenta (17%)
- Yellow (15%)
- Black (24%)



- Cyan (24%)
- Magenta (37%)
- Yellow (36%)

# Brightness & Saturation Gradients

These gradients show how the Hex color C2A1A4 changes by changing the brightness by 10 percent. The first figure shows a shift by +10% for each color and the second figure -10%.

Similar to the brightness gradients but the following saturation gradients show a change of the Hex color C2A1A4 by changing the saturation by 10% instead.





C2A1A4



C2A1A4

FFFFFF



A7878A



FBD8DB



8C6D70



FFF4F7



725558



593E41



41282B



2B1316



150000



000000



C2A1A4



C2A1A4

 C28E92

 C2B4B6

 C27A81

 C2C8C7

 C2676F

 C2DBD9

 C2535D

 C2EFEB

 C2404C

 C2FFFC

 C22D3A

 C2FFFF

 C21929

 C20617

 C20012

# Harmonies

## Analogous

The Analogous color harmony consists of three colors that are next to each other on the color wheel.



BDA2B0



C2A1A4



C0A399

# Triad

The Triadic color harmony groups three colors that are evenly spaced from another and form a triangle on the color wheel.



C2A1A4



9FAD98



95ACBF

# Complementary

The Complementary color scheme is a pair of colors which are on the opposite of each other on the color wheel.



C2A1A4



A1C2BF

# Split Complementary

Split-complementary colors differ from the complementary color scheme. The scheme consists of three colors, the original color and two neighbors of the complement color.



8CAFB9



C2A1A4



93AFA2

# Square

The Square scheme is like the rectangle color scheme, but the four colors are evenly spaced on the color wheel.



C2A1A4



ADAA92



8CB0AE



A3A8C0

# Rectangle

The Rectangle color scheme consists of four colors that form a rectangle on the color wheel.



C2A1A4



BCA594



8CB0AE



91ADBE

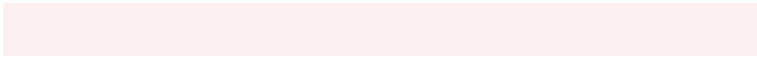


# Sweetspot

The Sweet Spot groups the original color and five complimentary colors.



C2A1A4



FCF0F1



BFA1C2



807879



000000



808080



# Same Dimension

The Same Dimension uses a secret algorithm to generate beautiful new colors.



C2A1A4



FCCACF



C2AEA1



615758



A1000F



210003



# Inverse Universe

The Inverse Universe completely reimagines the original color for something new.



C2A1A4



FCCACF



A1B5C2



615758



A1000F

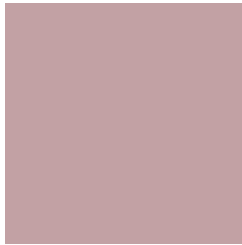


210003



# Previews

## White Background



This preview shows how the Hex color C2A1A4 looks on a white background.

## Color Contrast Check

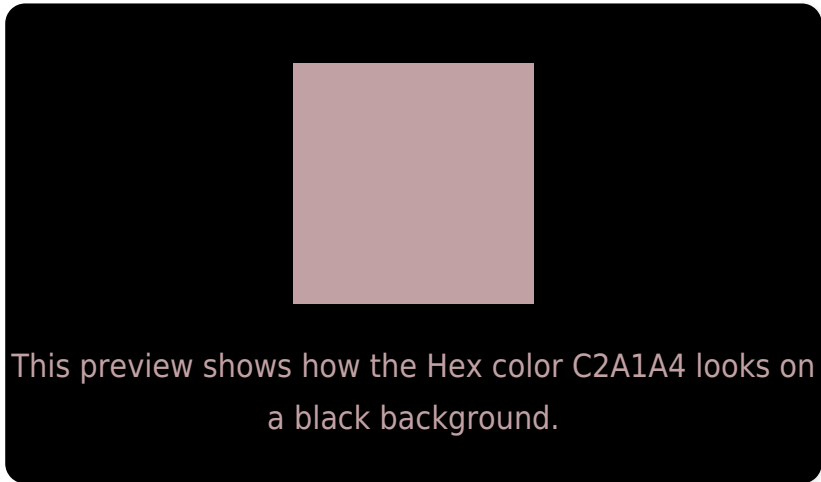
Large Text (above 18pt) WCAG AA × Fail

Any Text WCAG AA × Fail

Large Text (above 18pt) WCAG AAA × Fail

Any Text WCAG AAA × Fail

# Black Background



## Color Contrast Check

Large Text (above 18pt) WCAG AA ✓ Pass

Any Text WCAG AA ✓ Pass

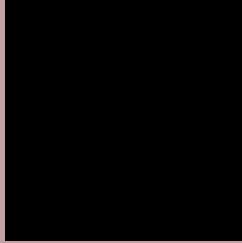
Large Text (above 18pt) WCAG AAA ✓ Pass

Any Text WCAG AAA ✓ Pass

If you want to check with other color combinations, try the [Color Contrast Checker](#).



## Hex C2A1A4 Background



This preview shows how black text looks on a background with the Hex color C2A1A4.



This preview shows how white text looks on a background with the Hex color C2A1A4.

# Color Blindness Simulation

Color vision deficiency is a very complex topic, and I could not describe the different causes any better than Wikipedia does, so if you want to learn more, you should check out their [article about color blindness](#).

## Dichromacy



**Original Color**  
C2A1A4

**Protanopia**  
ACA8A8

**Deuteranopia**  
BCA4A4



**Tritanopia**  
C3A0AC

# Trichromacy



**Original Color**  
C2A1A4

**Protanomaly**  
B4A5A7

**Deuteranomaly**  
BEA3A4

**Tritanomaly**  
C3A0A9

# Monochromacy



**Original Color**  
C2A1A4

**Achromatopsia**  
ABABAB

**Achromatomaly**  
B3A7A8

# CSS Examples

## Text

The CSS property to change the color of the text to Hex C2A1A4 is called "color". The color property can be set on classes, ids or directly on the HTML element.

This example shows how text in the color #C2A1A4 looks like.

```
.text, #text, p{  
    color:#C2A1A4  
}
```

If you want to add a text shadow in that color use the text-shadow property, you can generate a text shadow directly with our [CSS Text Shadow Generator](#).

Here you see how black text with a 4 pixel #C2A1A4 colored shadow looks like.

```
.shadow{ text-shadow: 4px 4px 2px #C2A1A4
}
```

## Border

The CSS property to change the border of an element to Hex C2A1A4 is called "border". The border property can be set on classes, ids or directly on the HTML element.

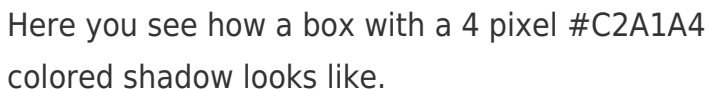
This example shows the color as border, it can be applied via the CSS property "border" or "border-color".

```
.border, #border, table{ border:4px solid
#C2A1A4 }
```

If only the border color should be changed use the property `border-color`.

```
.border{ border-color:#C2A1A4 }
```

If you want to add a box shadow in that color use:



Here you see how a box with a 4 pixel #C2A1A4 colored shadow looks like.

```
.boxshadow{ -moz-box-shadow:4px 4px 4px  
4px #C2A1A4; -webkit-box-shadow:4px 4px  
4px 4px #C2A1A4; box-shadow:4px 4px 4px  
4px #C2A1A4 }
```

# Background

The CSS property to change the background color of an element to Hex C2A1A4 is called "background". The background property can be set on classes, ids or directly on the HTML element.

```
.background, #background, body{  
background:#C2A1A4 }
```

If only the background color should be changed can be used:

```
.background{ background-color:#C2A1A4 }
```

This example shows the color as background, it is applied via the CSS property "background".

To optimize and compress your CSS code, you can use our [online CSS compressor and optimizer](#) based on csstidy. If you want to create a linear or radial gradient as background or border, check our [CSS Gradient Generator](#).



Hey! You found this booklet interesting? Support Converting Colors with the new Membership Option!

The pro membership hides all ads, plus gives you double the colors in the color bucket, and more awesome pro features!

**[Learn more, Memberships starting at \\$2.50/m!](#)**

**Follow me  
on Twitter!**

@ConvertingColor