

Converting Colors

Hex(C2A7A6)

Have a look what the booklet for
Hex(C2A7A6) contains.

Hex(C2A7A6)	3
<i>Conversions</i>	4
<i>Details</i>	6
<i>Harmonies</i>	11
<i>Previews</i>	23
<i>Color Blindness Simulation</i>	26
<i>CSS Examples</i>	29

Color

Hex(C2A7A6)

Conversions

Conversions Part 1

Format	Color
Hex	C2A7A6
RGB	194, 167, 166
RGB Percent	76%, 65%, 65%
CMY	0.2392, 0.3451, 0.3490
CMYK	0.00, 0.14, 0.14, 0.24
HSL	2°, 19%, 71%
HSV	2°, 14%, 76%
XYZ	42.9498, 41.8599, 41.8925
YIQ	174.9590, 16.4130, 5.4130

Conversions

Conversions Part 2

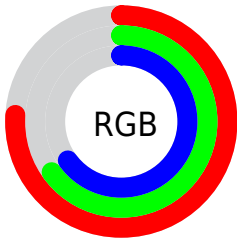
Format	Color
RYB	194, 167, 166
Decimal	12756902
CIELab	70.77, 9.66, 4.15
CIELCh	71, 10.513, 23.232
Yxy	41.8599, 0.3390, 0.3304
Android (android.graphics.Color)	4290946982 (0xFFC2A7A6)
YUV	174.9590, -4.4168, 16.6990
Hunter-Lab	64.6993, 5.2713, 6.8995

Details

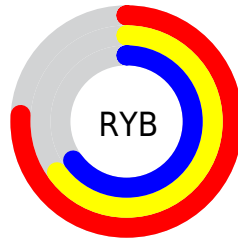
The Hex color **C2A7A6** is a light color, and the websafe version is hex **CC9999**. A complement of this color would be **A6C1C2**, and the grayscale version is **AFAFAF**.

A 20% lighter version of the original color is **FBDEDD**, and **8C7372** is the 20% darker color. If you saturate the color by 10%, you get **C29493**, and if you desaturate by 10%, it is **C2BAB9**.

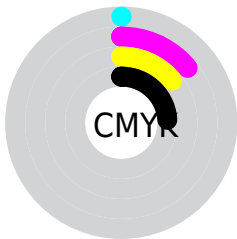
Distribution



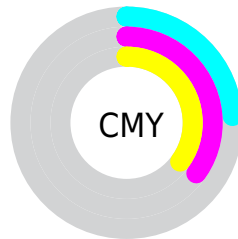
- Red (76%)
- Green (65%)
- Blue (65%)



- Red (76%)
- Yellow (65%)
- Blue (65%)



- Cyan (0%)
- Magenta (14%)
- Yellow (14%)
- Black (24%)



- Cyan (24%)
- Magenta (35%)
- Yellow (35%)

Brightness & Saturation Gradients

These gradients show how the Hex color C2A7A6 changes by changing the brightness by 10 percent. The first figure shows a shift by +10% for each color and the second figure -10%.

Similar to the brightness gradients but the following saturation gradients show a change of the Hex color C2A7A6 by changing the saturation by 10% instead.

 C2A7A6

FFFFFF

 FBDEDD

 FFFBFA

 C2A7A6

 A78D8C

 8C7372

 725A5A

 5A4342

 422D2C

 2B1818

 180000

 000000

 C2A7A6

 C2A7A6

 C29493

 C2BAB9

 C2827F

 C2CCCD

 C26F6C

 C2DFE0

 C25C58

 C2F2F4

 C24945

 C2FFFF

 C23732

 C2241E

 C2110B

 C20700

Harmonies

Analogous

The Analogous color harmony consists of three colors that are next to each other on the color wheel.



BFA7B0



C2A7A6



BFA99E

Triad

The Triadic color harmony groups three colors that are evenly spaced from another and form a triangle on the color wheel.



C2A7A6



A2B1A1



A1AFC0

Complementary

The Complementary color scheme is a pair of colors which are on the opposite of each other on the color wheel.



C2A7A6



A6C1C2

Split Complementary

Split-complementary colors differ from the complementary color scheme. The scheme consists of three colors, the original color and two neighbors of the complement color.



98B1BC



C2A7A6



99B3AB

Square

The Square scheme is like the rectangle color scheme, but the four colors are evenly spaced on the color wheel.



C2A7A6



ADAF9C



95B3B4



ACABBF

Rectangle

The Rectangle color scheme consists of four colors that form a rectangle on the color wheel.



C2A7A6



BAAB9B



95B3B4



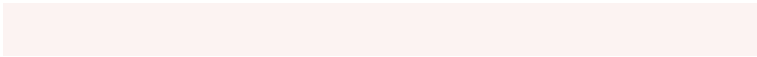
9DB0BF

Sweetspot

The Sweet Spot groups the original color and five complimentary colors.



C2A7A6



FCF3F2



C2A6C1



807979



000000



808080

Same Dimension

The Same Dimension uses a secret algorithm to generate beautiful new colors.



C2A7A6



FCD3D2



C2B5A6



615857



A10600



210100

Inverse Universe

The Inverse Universe completely reimagines the original color for something new.



A6C1C2



D2FBFC



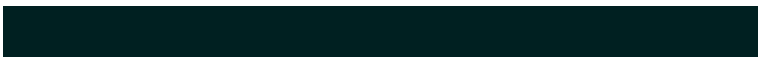
A6B3C2



576161



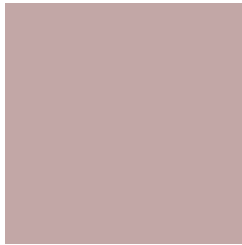
009BA1



002021

Previews

White Background



This preview shows how the Hex color C2A7A6 looks on a white background.

Color Contrast Check

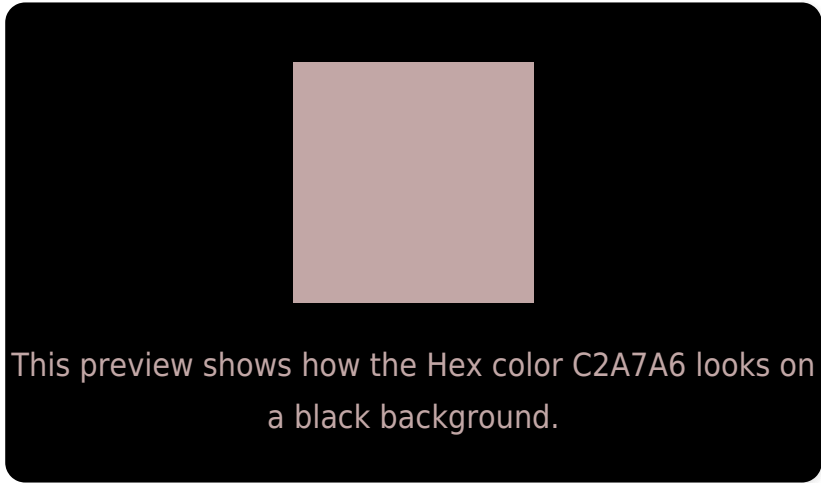
Large Text (above 18pt) WCAG AA × Fail

Any Text WCAG AA × Fail

Large Text (above 18pt) WCAG AAA × Fail

Any Text WCAG AAA × Fail

Black Background



Color Contrast Check

Large Text (above 18pt) WCAG AA ✓ Pass

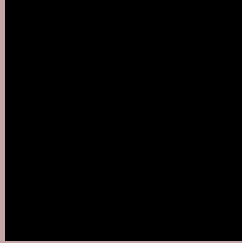
Any Text WCAG AA ✓ Pass

Large Text (above 18pt) WCAG AAA ✓ Pass

Any Text WCAG AAA ✓ Pass

If you want to check with other color combinations, try the [Color Contrast Checker](#).

Hex C2A7A6 Background



This preview shows how black text looks on a background with the Hex color C2A7A6.

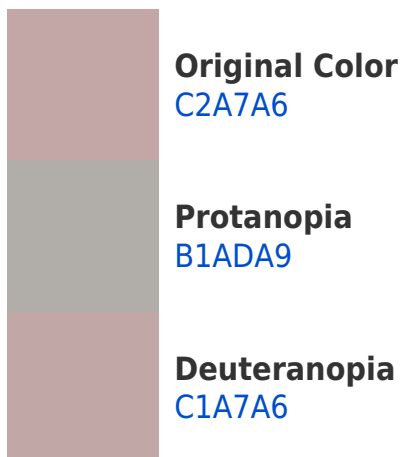


This preview shows how white text looks on a background with the Hex color C2A7A6.

Color Blindness Simulation

Color vision deficiency is a very complex topic, and I could not describe the different causes any better than Wikipedia does, so if you want to learn more, you should check out their [article about color blindness](#).

Dichromacy





Tritanopia
C4A5B2

Trichromacy



Original Color
C2A7A6

Protanomaly
B7ABA8

Deuteranomaly
C1A7A6

Tritanomaly
C3A6AE

Monochromacy



Original Color
C2A7A6

Achromatopsia
AFAFAF

Achromatomaly
B6ACAC

CSS Examples

Text

The CSS property to change the color of the text to Hex C2A7A6 is called "color". The color property can be set on classes, ids or directly on the HTML element.

This example shows how text in the color #C2A7A6 looks like.

```
.text, #text, p{  
    color:#C2A7A6  
}
```

If you want to add a text shadow in that color use the text-shadow property, you can generate a text shadow directly with our [CSS Text Shadow Generator](#).

Here you see how black text with a 4 pixel #C2A7A6 colored shadow looks like.

```
.shadow{ text-shadow: 4px 4px 2px #C2A7A6
}
```

Border

The CSS property to change the border of an element to Hex C2A7A6 is called "border". The border property can be set on classes, ids or directly on the HTML element.

This example shows the color as border, it can be applied via the CSS property "border" or "border-color".

```
.border, #border, table{ border:4px solid
#C2A7A6 }
```

If only the border color should be changed use the property `border-color`.

```
.border{ border-color:#C2A7A6 }
```

If you want to add a box shadow in that color use:

Here you see how a box with a 4 pixel #C2A7A6 colored shadow looks like.

```
.boxshadow{ -moz-box-shadow:4px 4px 4px  
4px #C2A7A6; -webkit-box-shadow:4px 4px  
4px 4px #C2A7A6; box-shadow:4px 4px 4px  
4px #C2A7A6 }
```

Background

The CSS property to change the background color of an element to Hex C2A7A6 is called "background". The background property can be set on classes, ids or directly on the HTML element.

```
.background, #background, body{  
background:#C2A7A6 }
```

If only the background color should be changed can be used:

```
.background{ background-color:#C2A7A6 }
```

This example shows the color as background, it is applied via the CSS property "background".

To optimize and compress your CSS code, you can use our [online CSS compressor and optimizer](#) based on csstidy. If you want to create a linear or radial gradient as background or border, check our [CSS Gradient Generator](#).

Hey! You found this booklet interesting? Support Converting Colors with the new Membership Option!

The pro membership hides all ads, plus gives you double the colors in the color bucket, and more awesome pro features!

[Learn more, Memberships starting at \\$2.50/m!](#)

**Follow me
on Twitter!**

@ConvertingColor