

Converting Colors

Hex(C2A7A8)

Have a look what the booklet for
Hex(C2A7A8) contains.

Hex(C2A7A8)	3
<i>Conversions</i>	4
<i>Details</i>	6
<i>Harmonies</i>	11
<i>Previews</i>	23
<i>Color Blindness Simulation</i>	26
<i>CSS Examples</i>	29

Color

Hex(C2A7A8)

Conversions

Conversions Part 1

Format	Color
Hex	C2A7A8
RGB	194, 167, 168
RGB Percent	76%, 65%, 66%
CMY	0.2392, 0.3451, 0.3412
CMYK	0.00, 0.14, 0.13, 0.24
HSL	358°, 18%, 71%
HSV	358°, 14%, 76%
XYZ	43.1347, 41.9339, 42.8664
YIQ	175.1870, 15.7710, 6.0350

Conversions

Conversions Part 2

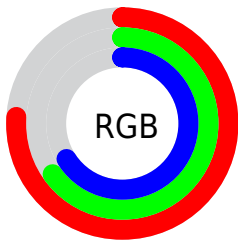
Format	Color
RYB	194, 167, 168
Decimal	12756904
CIELab	70.83, 9.99, 3.12
CIElCh	71, 10.465, 17.325
Yxy	41.9339, 0.3372, 0.3278
Android (android.graphics.Color)	4290946984 (0xFFC2A7A8)
YUV	175.1870, -3.5432, 16.4990
Hunter-Lab	64.7564, 5.5765, 6.0816

Details

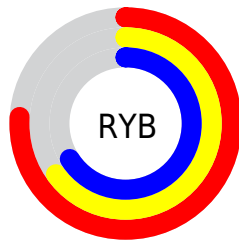
The Hex color **C2A7A8** is a light color, and the websafe version is hex **CC9999**. A complement of this color would be **A7C2C1**, and the grayscale version is **AFAFAF**.

A 20% lighter version of the original color is **FBDEDF**, and **8C7374** is the 20% darker color. If you saturate the color by 10%, you get **C29495**, and if you desaturate by 10%, it is **C2BABB**.

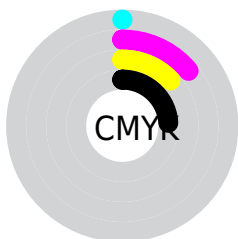
Distribution



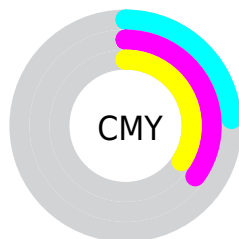
- Red (76%)
- Green (65%)
- Blue (66%)



- Red (76%)
- Yellow (65%)
- Blue (66%)



- Cyan (0%)
- Magenta (14%)
- Yellow (13%)
- Black (24%)



- Cyan (24%)
- Magenta (35%)
- Yellow (34%)

Brightness & Saturation Gradients

These gradients show how the Hex color C2A7A8 changes by changing the brightness by 10 percent. The first figure shows a shift by +10% for each color and the second figure -10%.

Similar to the brightness gradients but the following saturation gradients show a change of the Hex color C2A7A8 by changing the saturation by 10% instead.



C2A7A8



C2A7A8

FFFFFF



A78D8E



FBDEDF



8C7374



FFFBFC



725A5C



5A4344



422D2E



2B1819



180000



000000



C2A7A8



C2A7A8

 C29495

 C2BABB

 C28083

 C2CECD

 C26D70

 C2E1E0

 C2595D

 C2F5F3

 C2464B

 C2FFFF

 C23338

 C21F25

 C20C13

 C20007

Harmonies

Analogous

The Analogous color harmony consists of three colors that are next to each other on the color wheel.



BEA7B2



C2A7A8



C0A9A0

Triad

The Triadic color harmony groups three colors that are evenly spaced from another and form a triangle on the color wheel.



C2A7A8



A4B1A0



9FAFC0

Complementary

The Complementary color scheme is a pair of colors which are on the opposite of each other on the color wheel.



C2A7A8



A7C2C1

Split Complementary

Split-complementary colors differ from the complementary color scheme. The scheme consists of three colors, the original color and two neighbors of the complement color.



97B2BB



C2A7A8



9BB3A9

Square

The Square scheme is like the rectangle color scheme, but the four colors are evenly spaced on the color wheel.



C2A7A8



AFAE9B



96B3B3



AAACBF

Rectangle

The Rectangle color scheme consists of four colors that form a rectangle on the color wheel.



C2A7A8



BCAA9C



96B3B3



9CB0BF

Sweetspot

The Sweet Spot groups the original color and five complimentary colors.



C2A7A8



FCF2F3



C1A7C2



807979



000000



808080

Same Dimension

The Same Dimension uses a secret algorithm to generate beautiful new colors.



C2A7A8



FCD2D3



C2B3A7



615758



A10006



210001

Inverse Universe

The Inverse Universe completely reimagines the original color for something new.



C2A7A8



FCD2D3



A7B6C2



615758



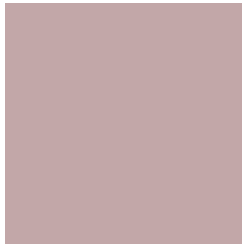
A10006



210001

Previews

White Background



This preview shows how the Hex color C2A7A8 looks on a white background.

Color Contrast Check

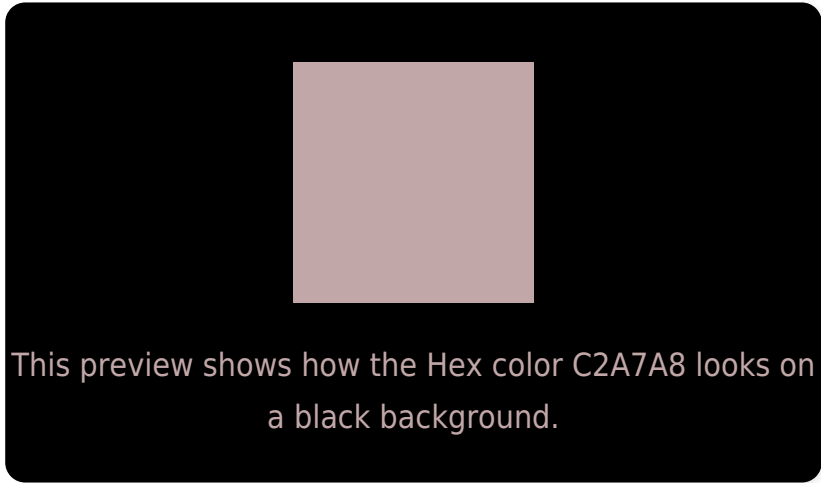
Large Text (above 18pt) WCAG AA × Fail

Any Text WCAG AA × Fail

Large Text (above 18pt) WCAG AAA × Fail

Any Text WCAG AAA × Fail

Black Background



Color Contrast Check

Large Text (above 18pt) WCAG AA ✓ Pass

Any Text WCAG AA ✓ Pass

Large Text (above 18pt) WCAG AAA ✓ Pass

Any Text WCAG AAA ✓ Pass

If you want to check with other color combinations, try the [Color Contrast Checker](#).

Hex C2A7A8 Background



This preview shows how black text looks on a background with the Hex color C2A7A8.



This preview shows how white text looks on a background with the Hex color C2A7A8.

Color Blindness Simulation

Color vision deficiency is a very complex topic, and I could not describe the different causes any better than Wikipedia does, so if you want to learn more, you should check out their [article about color blindness](#).

Dichromacy



Original Color
C2A7A8

Protanopia
B1ADAB

Deuteranopia
C0A8A8



Tritanopia
C3A5B2

Trichromacy



Original Color
C2A7A8

Protanomaly
B7ABAA

Deuteranomaly
C1A8A8

Tritanomaly
C3A6AE

Monochromacy



Original Color
C2A7A8

Achromatopsia
AFAFAF

Achromatomaly
B6ACAC

CSS Examples

Text

The CSS property to change the color of the text to Hex C2A7A8 is called "color". The color property can be set on classes, ids or directly on the HTML element.

This example shows how text in the color #C2A7A8 looks like.

```
.text, #text, p{  
    color:#C2A7A8  
}
```

If you want to add a text shadow in that color use the text-shadow property, you can generate a text shadow directly with our [CSS Text Shadow Generator](#).

Here you see how black text with a 4 pixel #C2A7A8 colored shadow looks like.

```
.shadow{ text-shadow: 4px 4px 2px #C2A7A8
}
```

Border

The CSS property to change the border of an element to Hex C2A7A8 is called "border". The border property can be set on classes, ids or directly on the HTML element.

This example shows the color as border, it can be applied via the CSS property "border" or "border-color".

```
.border, #border, table{ border:4px solid
#C2A7A8 }
```

If only the border color should be changed use the property `border-color`.

```
.border{ border-color:#C2A7A8 }
```

If you want to add a box shadow in that color use:

Here you see how a box with a 4 pixel #C2A7A8 colored shadow looks like.

```
.boxshadow{ -moz-box-shadow:4px 4px 4px  
4px #C2A7A8; -webkit-box-shadow:4px 4px  
4px 4px #C2A7A8; box-shadow:4px 4px 4px  
4px #C2A7A8 }
```

Background

The CSS property to change the background color of an element to Hex C2A7A8 is called "background". The background property can be set on classes, ids or directly on the HTML element.

```
.background, #background, body{  
background:#C2A7A8 }
```

If only the background color should be changed can be used:

```
.background{ background-color:#C2A7A8 }
```

This example shows the color as background, it is applied via the CSS property "background".

To optimize and compress your CSS code, you can use our [online CSS compressor and optimizer](#) based on csstidy. If you want to create a linear or radial gradient as background or border, check our [CSS Gradient Generator](#).

Hey! You found this booklet interesting? Support Converting Colors with the new Membership Option!

The pro membership hides all ads, plus gives you double the colors in the color bucket, and more awesome pro features!

[Learn more, Memberships starting at \\$2.50/m!](#)

**Follow me
on Twitter!**

@ConvertingColor