

Converting Colors

Hex(C2A8B0)

Have a look what the booklet for
Hex(C2A8B0) contains.

Hex(C2A8B0)	3
<i>Conversions</i>	4
<i>Details</i>	6
<i>Harmonies</i>	11
<i>Previews</i>	23
<i>Color Blindness Simulation</i>	26
<i>CSS Examples</i>	29

Color

Hex(C2A8B0)

Conversions

Conversions Part 1

Format	Color
Hex	C2A8B0
RGB	194, 168, 176
RGB Percent	76%, 66%, 69%
CMY	0.2392, 0.3412, 0.3098
CMYK	0.00, 0.13, 0.09, 0.24
HSL	342°, 18%, 71%
HSV	342°, 13%, 76%
XYZ	44.0872, 42.6092, 46.9750
YIQ	176.6860, 12.9280, 8.0000

Conversions

Conversions Part 2

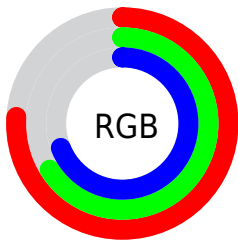
Format	Color
RYB	194, 168, 176
Decimal	12757168
CIELab	71.29, 10.80, -0.63
CIELCh	71, 10.818, 356.685
Yxy	42.6092, 0.3298, 0.3188
Android (android.graphics.Color)	4290947248 (0xFFC2A8B0)
YUV	176.6860, -0.3382, 15.1844
Hunter-Lab	65.2757, 6.3265, 3.0255

Details

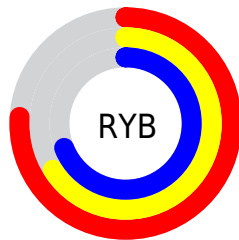
The Hex color **C2A8B0** is a light color, and the websafe version is hex **CC9999**. A complement of this color would be **A8C2BA**, and the grayscale version is **B1B1B1**.

A 20% lighter version of the original color is **FBDfE8**, and **8C747C** is the 20% darker color. If you saturate the color by 10%, you get **C295A3**, and if you desaturate by 10%, it is **C2BBBD**.

Distribution



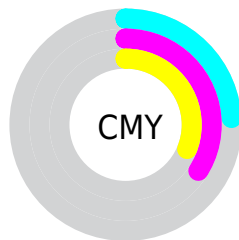
- Red (76%)
- Green (66%)
- Blue (69%)



- Red (76%)
- Yellow (66%)
- Blue (69%)



- Cyan (0%)
- Magenta (13%)
- Yellow (9%)
- Black (24%)



- Cyan (24%)
- Magenta (34%)
- Yellow (31%)

Brightness & Saturation Gradients

These gradients show how the Hex color C2A8B0 changes by changing the brightness by 10 percent. The first figure shows a shift by +10% for each color and the second figure -10%.

Similar to the brightness gradients but the following saturation gradients show a change of the Hex color C2A8B0 by changing the saturation by 10% instead.

 C2A8B0

FFFFFF

 FBDFE8

 FFFCFF

 C2A8B0

 A78E95

 8C747C

 735B63

 5A444B

 422D34

 2C191F

 190007

 000000

 C2A8B0

 C2A8B0

 C295A3

 C2BBBD

 C28195

 C2CFCB

 C26E88

 C2E2D8

 C25A7A

 C2F6E6

 C2476D

 C2FFF3

 C2345F

 C2FFFF

 C22052

 C20D45

 C2003C

Harmonies

Analogous

The Analogous color harmony consists of three colors that are next to each other on the color wheel.



BBAABA



C2A8B0



C4A8A6

Triad

The Triadic color harmony groups three colors that are evenly spaced from another and form a triangle on the color wheel.



C2A8B0



ADB19D



99B3BF

Complementary

The Complementary color scheme is a pair of colors which are on the opposite of each other on the color wheel.



C2A8B0



A8C2BA

Split Complementary

Split-complementary colors differ from the complementary color scheme. The scheme consists of three colors, the original color and two neighbors of the complement color.



96B4B7



C2A8B0



A2B3A3

Square

The Square scheme is like the rectangle color scheme, but the four colors are evenly spaced on the color wheel.



C2A8B0



B8AD9B



99B4AD



A3B0C2

Rectangle

The Rectangle color scheme consists of four colors that form a rectangle on the color wheel.



C2A8B0



C2AAA1



99B4AD



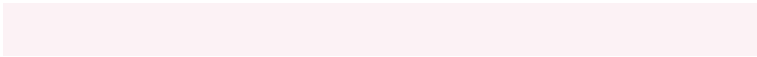
98B3BC

Sweetspot

The Sweet Spot groups the original color and five complimentary colors.



C2A8B0



FCF2F5



BAA8C2



80797B



000000



808080

Same Dimension

The Same Dimension uses a secret algorithm to generate beautiful new colors.



C2A8B0



FCD4E0



C2ADA8



61575A



A10031



21000A

Inverse Universe

The Inverse Universe completely reimagines the original color for something new.



C2A8B0



FCD4E0



A8BDC2



61575A



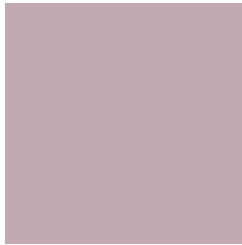
A10031



21000A

Previews

White Background



This preview shows how the Hex color C2A8B0 looks on a white background.

Color Contrast Check

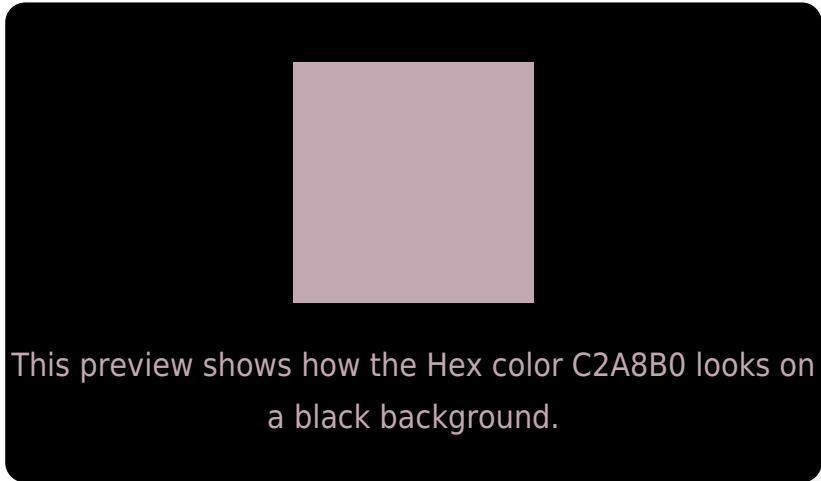
Large Text (above 18pt) WCAG AA × Fail

Any Text WCAG AA × Fail

Large Text (above 18pt) WCAG AAA × Fail

Any Text WCAG AAA × Fail

Black Background



Color Contrast Check

Large Text (above 18pt) WCAG AA ✓ Pass

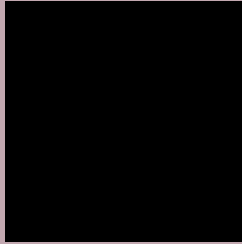
Any Text WCAG AA ✓ Pass

Large Text (above 18pt) WCAG AAA ✓ Pass

Any Text WCAG AAA ✓ Pass

If you want to check with other color combinations, try the [Color Contrast Checker](#).

Hex C2A8B0 Background



This preview shows how black text looks on a background with the Hex color C2A8B0.



This preview shows how white text looks on a background with the Hex color C2A8B0.

Color Blindness Simulation

Color vision deficiency is a very complex topic, and I could not describe the different causes any better than Wikipedia does, so if you want to learn more, you should check out their [article about color blindness](#).

Dichromacy





Tritanopia
C3A7B4

Trichromacy



Original Color
C2A8B0

Protanomaly
B7ACB2

Deuteranomaly
C0A9B0

Tritanomaly
C3A7B3

Monochromacy



Original Color
C2A8B0

Achromatopsia
B1B1B1

Achromatomaly
B7AEB1

CSS Examples

Text

The CSS property to change the color of the text to Hex C2A8B0 is called "color". The color property can be set on classes, ids or directly on the HTML element.

This example shows how text in the color #C2A8B0 looks like.

```
.text, #text, p{  
    color:#C2A8B0  
}
```

If you want to add a text shadow in that color use the text-shadow property, you can generate a text shadow directly with our [CSS Text Shadow Generator](#).

Here you see how black text with a 4 pixel #C2A8B0 colored shadow looks like.

```
.shadow{ text-shadow: 4px 4px 2px #C2A8B0  
}
```

Border

The CSS property to change the border of an element to Hex C2A8B0 is called "border". The border property can be set on classes, ids or directly on the HTML element.

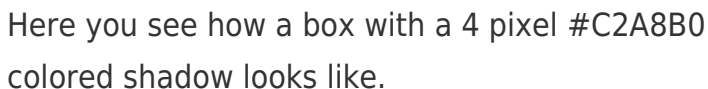
This example shows the color as border, it can be applied via the CSS property "border" or "border-color".

```
.border, #border, table{ border:4px solid  
#C2A8B0 }
```

If only the border color should be changed use the property `border-color`.

```
.border{ border-color:#C2A8B0 }
```

If you want to add a box shadow in that color use:



Here you see how a box with a 4 pixel #C2A8B0 colored shadow looks like.

```
.boxshadow{ -moz-box-shadow:4px 4px 4px  
4px #C2A8B0; -webkit-box-shadow:4px 4px  
4px 4px #C2A8B0; box-shadow:4px 4px 4px  
4px #C2A8B0 }
```

Background

The CSS property to change the background color of an element to Hex C2A8B0 is called "background". The background property can be set on classes, ids or directly on the HTML element.

```
.background, #background, body{  
background:#C2A8B0 }
```

If only the background color should be changed can be used:

```
.background{ background-color:#C2A8B0 }
```

This example shows the color as background, it is applied via the CSS property "background".

To optimize and compress your CSS code, you can use our [online CSS compressor and optimizer](#) based on csstidy. If you want to create a linear or radial gradient as background or border, check our [CSS Gradient Generator](#).

Hey! You found this booklet interesting? Support Converting Colors with the new Membership Option!

The pro membership hides all ads, plus gives you double the colors in the color bucket, and more awesome pro features!

[Learn more, Memberships starting at \\$2.50/m!](#)

**Follow me
on Twitter!**

@ConvertingColor