

Converting Colors

Hex(C2AEAD)

Have a look what the booklet for
Hex(C2AEAD) contains.

Hex(C2AEAD)	3
<i>Conversions</i>	4
<i>Details</i>	6
<i>Harmonies</i>	11
<i>Previews</i>	23
<i>Color Blindness Simulation</i>	26
<i>CSS Examples</i>	29

Color

Hex(C2AEAD)

Conversions

Conversions Part 1

Format	Color
Hex	C2AEAD
RGB	194, 174, 173
RGB Percent	76%, 68%, 68%
CMY	0.2392, 0.3176, 0.3216
CMYK	0.00, 0.10, 0.11, 0.24
HSL	3°, 15%, 72%
HSV	3°, 11%, 76%
XYZ	44.9270, 44.7586, 45.8065
YIQ	179.8660, 12.2410, 3.9290

Conversions

Conversions Part 2

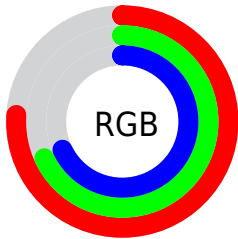
Format	Color
RYB	194, 174, 173
Decimal	12758701
CIELab	72.73, 7.02, 3.13
CIELCh	73, 7.684, 24.016
Yxy	44.7586, 0.3316, 0.3303
Android (android.graphics.Color)	4290948781 (0xFFC2AEAD)
YUV	179.8660, -3.3849, 12.3955
Hunter-Lab	66.9018, 2.7910, 6.2365

Details

The Hex color **C2AEAD** is a light color, and the websafe version is hex **CCCCCC**. A complement of this color would be **ADC1C2**, and the grayscale version is **B4B4B4**.

A 20% lighter version of the original color is **FBE5E4**, and **8C7A79** is the 20% darker color. If you saturate the color by 10%, you get **C29C9A**, and if you desaturate by 10%, it is **C2C0C0**.

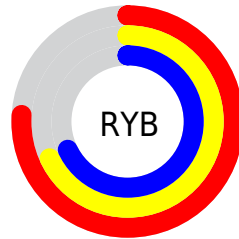
Distribution



Red (76%)

Green (68%)

Blue (68%)



Red (76%)

Yellow (68%)

Blue (68%)

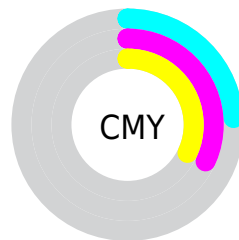


Cyan (0%)

Magenta (10%)

Yellow (11%)

Black (24%)



Cyan (24%)

Magenta (32%)

Yellow (32%)

Brightness & Saturation Gradients

These gradients show how the Hex color C2AEAD changes by changing the brightness by 10 percent. The first figure shows a shift by +10% for each color and the second figure -10%.

Similar to the brightness gradients but the following saturation gradients show a change of the Hex color C2AEAD by changing the saturation by 10% instead.

 C2AEAD

 C2AEAD

FFFFFF

 A79392

 FBE5E4

 8C7A79

 736160

 5A4948

 423232

 2C1D1D

 190403

 000000

 C2AEAD

 C2AEAD

 C29C9A

 C2C0C0

 C28986

 C2D3D4

 C27773

 C2E5E7

 C2645F

 C2F8FB

 C2524C

 C2FFFF

 C23F39

 C22D25

 C21A12

 C20900

Harmonies

Analogous

The Analogous color harmony consists of three colors that are next to each other on the color wheel.



C0AEB4



C2AEAD



C0AFA7

Triad

The Triadic color harmony groups three colors that are evenly spaced from another and form a triangle on the color wheel.



C2AEAD



AAB6AA



AAB3C0

Complementary

The Complementary color scheme is a pair of colors which are on the opposite of each other on the color wheel.



C2AEAD



ADC1C2

Split Complementary

Split-complementary colors differ from the complementary color scheme. The scheme consists of three colors, the original color and two neighbors of the complement color.



A3B5BE



C2AEAD



A4B7B1

Square

The Square scheme is like the rectangle color scheme, but the four colors are evenly spaced on the color wheel.



C2AEAD



B2B4A6



A1B7B8



B2B1BF

Rectangle

The Rectangle color scheme consists of four colors that form a rectangle on the color wheel.



C2AEAD



BCB1A5



A1B7B8



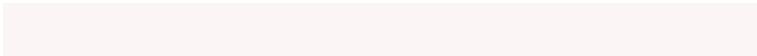
A7B4C0

Sweetspot

The Sweet Spot groups the original color and five complimentary colors.



C2AEAD



FCF5F5



C2ADC1



807B7A



000000



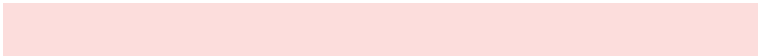
808080

Same Dimension

The Same Dimension uses a secret algorithm to generate beautiful new colors.



C2AEAD



FCDDDC



C2B8AD



615857



A10800



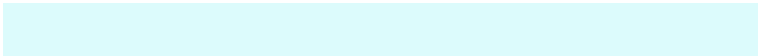
210200

Inverse Universe

The Inverse Universe completely reimagines the original color for something new.



ADC1C2



DCFBFC



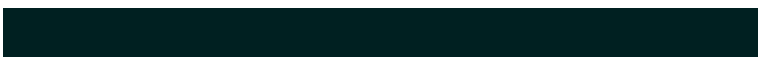
ADB7C2



576061



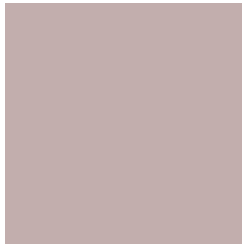
0099A1



002021

Previews

White Background



This preview shows how the Hex color C2AEAD looks on a white background.

Color Contrast Check

Large Text (above 18pt) WCAG AA × Fail

Any Text WCAG AA × Fail

Large Text (above 18pt) WCAG AAA × Fail

Any Text WCAG AAA × Fail

Black Background



This preview shows how the Hex color C2AEAD looks on a black background.

Color Contrast Check

Large Text (above 18pt) WCAG AA ✓ Pass

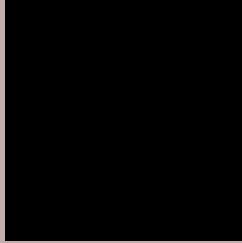
Any Text WCAG AA ✓ Pass

Large Text (above 18pt) WCAG AAA ✓ Pass

Any Text WCAG AAA ✓ Pass

If you want to check with other color combinations, try the [Color Contrast Checker](#).

Hex C2AEAD Background



This preview shows how black text looks on a background with the Hex color C2AEAD.

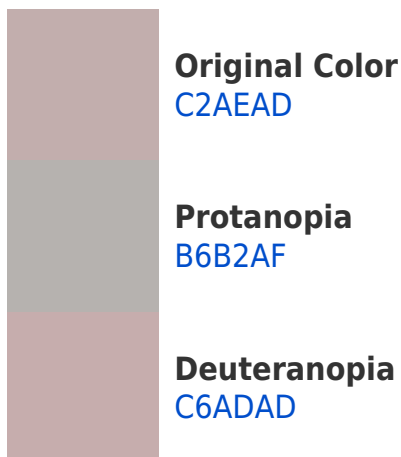


This preview shows how white text looks on a background with the Hex color C2AEAD.

Color Blindness Simulation

Color vision deficiency is a very complex topic, and I could not describe the different causes any better than Wikipedia does, so if you want to learn more, you should check out their [article about color blindness](#).

Dichromacy



Trichromacy



Original Color
C2AEAD

Protanomaly
BAB1AE

Deuteranomaly
C5ADAD

Tritanomaly
C3ADB5

Monochromacy



Original Color
C2AEAD

Achromatopsia
B4B4B4

Achromatomaly
B9B2B1

CSS Examples

Text

The CSS property to change the color of the text to Hex C2AEAD is called "color". The color property can be set on classes, ids or directly on the HTML element.

This example shows how text in the color #C2AEAD looks like.

```
.text, #text, p{  
    color:#C2AEAD  
}
```

If you want to add a text shadow in that color use the text-shadow property, you can generate a text shadow directly with our [CSS Text Shadow Generator](#).

Here you see how black text with a 4 pixel #C2AEAD colored shadow looks like.

```
.shadow{ text-shadow: 4px 4px 2px #C2AEAD
}
```

Border

The CSS property to change the border of an element to Hex C2AEAD is called "border". The border property can be set on classes, ids or directly on the HTML element.

This example shows the color as border, it can be applied via the CSS property "border" or "border-color".

```
.border, #border, table{ border:4px solid
#C2AEAD }
```

If only the border color should be changed use the property `border-color`.

```
.border{ border-color:#C2AEAD }
```

If you want to add a box shadow in that color use:

Here you see how a box with a 4 pixel #C2AEAD colored shadow looks like.

```
.boxshadow{ -moz-box-shadow:4px 4px 4px  
4px #C2AEAD; -webkit-box-shadow:4px 4px  
4px 4px #C2AEAD; box-shadow:4px 4px 4px  
4px #C2AEAD }
```

Background

The CSS property to change the background color of an element to Hex C2AEAD is called "background". The background property can be set on classes, ids or directly on the HTML element.

```
.background, #background, body{  
background:#C2AEAD }
```

If only the background color should be changed can be used:

```
.background{ background-color:#C2AEAD }
```

This example shows the color as background, it is applied via the CSS property "background".

To optimize and compress your CSS code, you can use our [online CSS compressor and optimizer](#) based on csstidy. If you want to create a linear or radial gradient as background or border, check our [CSS Gradient Generator](#).

Hey! You found this booklet interesting? Support Converting Colors with the new Membership Option!

The pro membership hides all ads, plus gives you double the colors in the color bucket, and more awesome pro features!

[Learn more, Memberships starting at \\$2.50/m!](#)

**Follow me
on Twitter!**

@ConvertingColor