

Converting Colors

Hex(C2B2B5)

Have a look what the booklet for
Hex(C2B2B5) contains.

Hex(C2B2B5)	3
<i>Conversions</i>	4
<i>Details</i>	6
<i>Harmonies</i>	11
<i>Previews</i>	23
<i>Color Blindness Simulation</i>	26
<i>CSS Examples</i>	29

Color

Hex(C2B2B5)

Conversions

Conversions Part 1

Format	Color
Hex	C2B2B5
RGB	194, 178, 181
RGB Percent	76%, 70%, 71%
CMY	0.2392, 0.3020, 0.2902
CMYK	0.00, 0.08, 0.07, 0.24
HSL	349°, 12%, 73%
HSV	349°, 8%, 76%
XYZ	46.5090, 46.6463, 50.2684
YIQ	183.1260, 8.5730, 4.3250

Conversions

Conversions Part 2

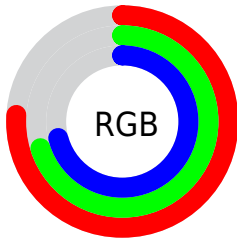
Format	Color
RYB	194, 178, 181
Decimal	12759733
CIELab	73.96, 6.23, 0.53
CIELCh	74, 6.257, 4.884
Yxy	46.6463, 0.3243, 0.3252
Android (android.graphics.Color)	4290949813 (0xFFC2B2B5)
YUV	183.1260, -1.0481, 9.5365
Hunter-Lab	68.2981, 2.0316, 4.1704

Details

The Hex color **C2B2B5** is a light color, and the websafe version is hex **CCCCCC**. A complement of this color would be **B2C2BF**, and the grayscale version is **B7B7B7**.

A 20% lighter version of the original color is **FBEAED**, and **8C7D80** is the 20% darker color. If you saturate the color by 10%, you get **C29FA5**, and if you desaturate by 10%, it is **C2C5C5**.

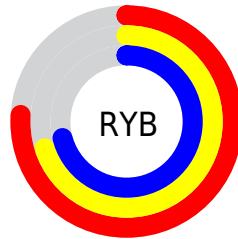
Distribution



Red (76%)

Green (70%)

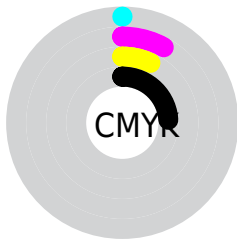
Blue (71%)



Red (76%)

Yellow (70%)

Blue (71%)

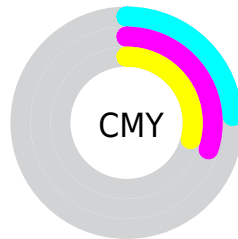


Cyan (0%)

Magenta (8%)

Yellow (7%)

Black (24%)



Cyan (24%)

Magenta (30%)

Yellow (29%)

Brightness & Saturation Gradients

These gradients show how the Hex color C2B2B5 changes by changing the brightness by 10 percent. The first figure shows a shift by +10% for each color and the second figure -10%.

Similar to the brightness gradients but the following saturation gradients show a change of the Hex color C2B2B5 by changing the saturation by 10% instead.



C2B2B5



C2B2B5

FFFFFF



A7979A



FBEAED



8C7D80



736467



5A4D4F



433638



2C2023



190A0D



000000



C2B2B5



C2B2B5

 C29FA5

 C2C5C5

 C28B95

 C2D9D5

 C27886

 C2ECE4

 C26476

 C2FFF4

 C25166

 C2FFFF

 C23E56

 C22A47

 C21737

 C20327

Harmonies

Analogous

The Analogous color harmony consists of three colors that are next to each other on the color wheel.



BEB3BB



C2B2B5



C2B2AF

Triad

The Triadic color harmony groups three colors that are evenly spaced from another and form a triangle on the color wheel.



C2B2B5



B3B7AC



ABB8C0

Complementary

The Complementary color scheme is a pair of colors which are on the opposite of each other on the color wheel.



C2B2B5



B2C2BF

Split Complementary

Split-complementary colors differ from the complementary color scheme. The scheme consists of three colors, the original color and two neighbors of the complement color.



A8B9BC



C2B2B5



ADB9B1

Square

The Square scheme is like the rectangle color scheme, but the four colors are evenly spaced on the color wheel.



C2B2B5



BAB6AA



A9B9B7



B1B6C1

Rectangle

The Rectangle color scheme consists of four colors that form a rectangle on the color wheel.



C2B2B5



C1B3AD



A9B9B7



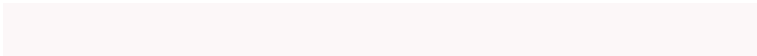
AAB8BF

Sweetspot

The Sweet Spot groups the original color and five complimentary colors.



C2B2B5



FCF7F8



BFB2C2



807D7D



000000



808080

Same Dimension

The Same Dimension uses a secret algorithm to generate beautiful new colors.



C2B2B5



FCE3E8



C2B7B2



615759



A1001E



210006

Inverse Universe

The Inverse Universe completely reimagines the original color for something new.



C2B2B5



FCE3E8



B2BDC2



615759



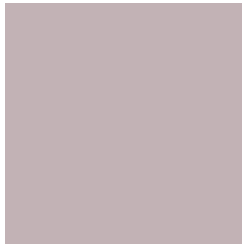
A1001E



210006

Previews

White Background



This preview shows how the Hex color C2B2B5 looks on a white background.

Color Contrast Check

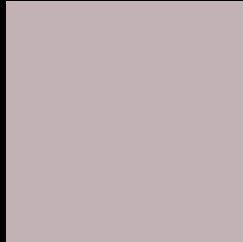
Large Text (above 18pt) WCAG AA × Fail

Any Text WCAG AA × Fail

Large Text (above 18pt) WCAG AAA × Fail

Any Text WCAG AAA × Fail

Black Background



This preview shows how the Hex color C2B2B5 looks on a black background.

Color Contrast Check

Large Text (above 18pt) WCAG AA ✓ Pass

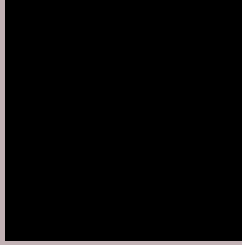
Any Text WCAG AA ✓ Pass

Large Text (above 18pt) WCAG AAA ✓ Pass

Any Text WCAG AAA ✓ Pass

If you want to check with other color combinations, try the [Color Contrast Checker](#).

Hex C2B2B5 Background



This preview shows how black text looks on a background with the Hex color C2B2B5.



This preview shows how white text looks on a background with the Hex color C2B2B5.

Color Blindness Simulation

Color vision deficiency is a very complex topic, and I could not describe the different causes any better than Wikipedia does, so if you want to learn more, you should check out their [article about color blindness](#).

Dichromacy





Tritanopia
C3B1BE

Trichromacy



Original Color
C2B2B5

Protanomaly
BCB4B6

Deuteranomaly
C5B1B5

Tritanomaly
C3B1BB

Monochromacy



Original Color
C2B2B5

Achromatopsia
B7B7B7

Achromatomaly
BBB5B6

CSS Examples

Text

The CSS property to change the color of the text to Hex C2B2B5 is called "color". The color property can be set on classes, ids or directly on the HTML element.

This example shows how text in the color #C2B2B5 looks like.

```
.text, #text, p{  
    color:#C2B2B5  
}
```

If you want to add a text shadow in that color use the text-shadow property, you can generate a text shadow directly with our [CSS Text Shadow Generator](#).

Here you see how black text with a 4 pixel #C2B2B5 colored shadow looks like.

```
.shadow{ text-shadow: 4px 4px 2px #C2B2B5  
}
```

Border

The CSS property to change the border of an element to Hex C2B2B5 is called "border". The border property can be set on classes, ids or directly on the HTML element.

This example shows the color as border, it can be applied via the CSS property "border" or "border-color".

```
.border, #border, table{ border:4px solid  
#C2B2B5 }
```

If only the border color should be changed use the property `border-color`.

```
.border{ border-color:#C2B2B5 }
```

If you want to add a box shadow in that color use:

Here you see how a box with a 4 pixel #C2B2B5 colored shadow looks like.

```
.boxshadow{ -moz-box-shadow:4px 4px 4px  
4px #C2B2B5; -webkit-box-shadow:4px 4px  
4px 4px #C2B2B5; box-shadow:4px 4px 4px  
4px #C2B2B5 }
```

Background

The CSS property to change the background color of an element to Hex C2B2B5 is called "background". The background property can be set on classes, ids or directly on the HTML element.

```
.background, #background, body{  
background:#C2B2B5 }
```

If only the background color should be changed can be used:

```
.background{ background-color:#C2B2B5 }
```

This example shows the color as background, it is applied via the CSS property "background".

To optimize and compress your CSS code, you can use our [online CSS compressor and optimizer](#) based on csstidy. If you want to create a linear or radial gradient as background or border, check our [CSS Gradient Generator](#).

Hey! You found this booklet interesting? Support Converting Colors with the new Membership Option!

The pro membership hides all ads, plus gives you double the colors in the color bucket, and more awesome pro features!

[Learn more, Memberships starting at \\$2.50/m!](#)

**Follow me
on Twitter!**

@ConvertingColor