

Converting Colors

Hex(C2B2B7)

Have a look what the booklet for
Hex(C2B2B7) contains.

Hex(C2B2B7)	3
<i>Conversions</i>	4
<i>Details</i>	6
<i>Harmonies</i>	11
<i>Previews</i>	23
<i>Color Blindness Simulation</i>	26
<i>CSS Examples</i>	29

Color

Hex(C2B2B7)

Conversions

Conversions Part 1

Format	Color
Hex	C2B2B7
RGB	194, 178, 183
RGB Percent	76%, 70%, 72%
CMY	0.2392, 0.3020, 0.2824
CMYK	0.00, 0.08, 0.06, 0.24
HSL	341°, 12%, 73%
HSV	341°, 8%, 76%
XYZ	46.7158, 46.7290, 51.3572
YIQ	183.3540, 7.9310, 4.9470

Conversions

Conversions Part 2

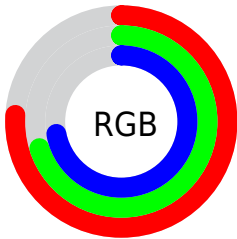
Format	Color
RYB	194, 178, 183
Decimal	12759735
CIELab	74.02, 6.59, -0.48
CIELCh	74, 6.606, 355.801
Yxy	46.7290, 0.3226, 0.3227
Android (android.graphics.Color)	4290949815 (0xFFC2B2B7)
YUV	183.3540, -0.1745, 9.3365
Hunter-Lab	68.3586, 2.3580, 3.3070

Details

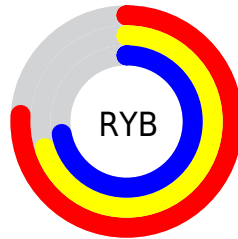
The Hex color **C2B2B7** is a light color, and the websafe version is hex **CCCCCC**. A complement of this color would be **B2C2BD**, and the grayscale version is **B7B7B7**.

A 20% lighter version of the original color is **FBEAEF**, and **8C7D82** is the 20% darker color. If you saturate the color by 10%, you get **C29FAA**, and if you desaturate by 10%, it is **C2C5C4**.

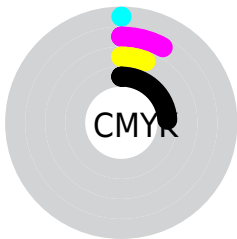
Distribution



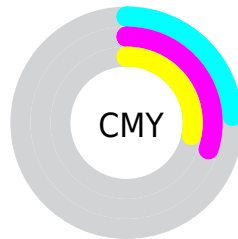
- Red (76%)
- Green (70%)
- Blue (72%)



- Red (76%)
- Yellow (70%)
- Blue (72%)



- Cyan (0%)
- Magenta (8%)
- Yellow (6%)
- Black (24%)



- Cyan (24%)
- Magenta (30%)
- Yellow (28%)

Brightness & Saturation Gradients

These gradients show how the Hex color C2B2B7 changes by changing the brightness by 10 percent. The first figure shows a shift by +10% for each color and the second figure -10%.

Similar to the brightness gradients but the following saturation gradients show a change of the Hex color C2B2B7 by changing the saturation by 10% instead.

 C2B2B7

 C2B2B7

FFFFFF

 A7979C

 FBEAEF

 8C7D82

 736469

 5A4D51

 43363A

 2C2024

 190A0F

 000000

 C2B2B7

 C2B2B7

 C29FAA

 C2C5C4

 C28B9C

 C2D9D2

 C2788F

 C2ECDF

 C26482

 C2FFEC

 C25174

 C2FFFA

 C23E67

 C2FFFF

 C22A5A

 C2174C

 C2033F

Harmonies

Analogous

The Analogous color harmony consists of three colors that are next to each other on the color wheel.



BDB3BD



C2B2B7



C3B2B1

Triad

The Triadic color harmony groups three colors that are evenly spaced from another and form a triangle on the color wheel.



C2B2B7



B5B7AB



A9B8C0

Complementary

The Complementary color scheme is a pair of colors which are on the opposite of each other on the color wheel.



C2B2B7



B2C2BD

Split Complementary

Split-complementary colors differ from the complementary color scheme. The scheme consists of three colors, the original color and two neighbors of the complement color.



A7B9BB



C2B2B7



AEB9AF

Square

The Square scheme is like the rectangle color scheme, but the four colors are evenly spaced on the color wheel.



C2B2B7



BCB5AA



A9BAB5



AFB7C2

Rectangle

The Rectangle color scheme consists of four colors that form a rectangle on the color wheel.



C2B2B7



C2B3AD



A9BAB5



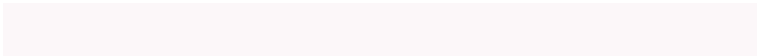
A8B9BE

Sweetspot

The Sweet Spot groups the original color and five complimentary colors.



C2B2B7



FCF7F9



BDB2C2



807D7E



000000



808080

Same Dimension

The Same Dimension uses a secret algorithm to generate beautiful new colors.



C2B2B7



FCE3EB



C2B5B2



61575A



A10032



21000A

Inverse Universe

The Inverse Universe completely reimagines the original color for something new.



C2B2B7



FCE3EB



B2BFC2



61575A



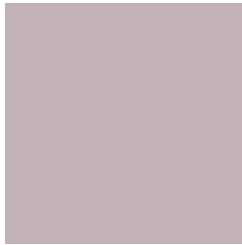
A10032



21000A

Previews

White Background



This preview shows how the Hex color C2B2B7 looks on a white background.

Color Contrast Check

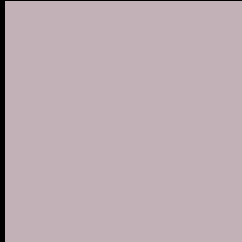
Large Text (above 18pt) WCAG AA × Fail

Any Text WCAG AA × Fail

Large Text (above 18pt) WCAG AAA × Fail

Any Text WCAG AAA × Fail

Black Background



This preview shows how the Hex color C2B2B7 looks on a black background.

Color Contrast Check

Large Text (above 18pt) WCAG AA ✓ Pass

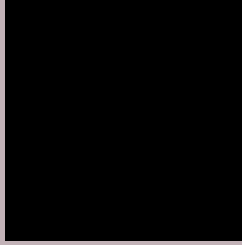
Any Text WCAG AA ✓ Pass

Large Text (above 18pt) WCAG AAA ✓ Pass

Any Text WCAG AAA ✓ Pass

If you want to check with other color combinations, try the [Color Contrast Checker](#).

Hex C2B2B7 Background



This preview shows how black text looks on a background with the Hex color C2B2B7.



This preview shows how white text looks on a background with the Hex color C2B2B7.

Color Blindness Simulation

Color vision deficiency is a very complex topic, and I could not describe the different causes any better than Wikipedia does, so if you want to learn more, you should check out their [article about color blindness](#).

Dichromacy



Original Color
C2B2B7

Protanopia
B8B5B9

Deuteranopia
C7B0B7



Tritanopia
C3B1BF

Trichromacy



Original Color
C2B2B7

Protanomaly
BCB4B8

Deuteranomaly
C5B1B7

Tritanomaly
C3B1BC

Monochromacy



Original Color
C2B2B7

Achromatopsia
B7B7B7

Achromatomaly
BBB5B7

CSS Examples

Text

The CSS property to change the color of the text to Hex C2B2B7 is called "color". The color property can be set on classes, ids or directly on the HTML element.

This example shows how text in the color #C2B2B7 looks like.

```
.text, #text, p{  
    color:#C2B2B7  
}
```

If you want to add a text shadow in that color use the text-shadow property, you can generate a text shadow directly with our [CSS Text Shadow Generator](#).

Here you see how black text with a 4 pixel #C2B2B7 colored shadow looks like.

```
.shadow{ text-shadow: 4px 4px 2px #C2B2B7
}
```

Border

The CSS property to change the border of an element to Hex C2B2B7 is called "border". The border property can be set on classes, ids or directly on the HTML element.

This example shows the color as border, it can be applied via the CSS property "border" or "border-color".

```
.border, #border, table{ border:4px solid
#C2B2B7 }
```

If only the border color should be changed use the property `border-color`.

```
.border{ border-color:#C2B2B7 }
```

If you want to add a box shadow in that color use:

Here you see how a box with a 4 pixel #C2B2B7 colored shadow looks like.

```
.boxshadow{ -moz-box-shadow:4px 4px 4px  
4px #C2B2B7; -webkit-box-shadow:4px 4px  
4px 4px #C2B2B7; box-shadow:4px 4px 4px  
4px #C2B2B7 }
```

Background

The CSS property to change the background color of an element to Hex C2B2B7 is called "background". The background property can be set on classes, ids or directly on the HTML element.

```
.background, #background, body{  
background:#C2B2B7 }
```

If only the background color should be changed can be used:

```
.background{ background-color:#C2B2B7 }
```

This example shows the color as background, it is applied via the CSS property "background".

To optimize and compress your CSS code, you can use our [online CSS compressor and optimizer](#) based on csstidy. If you want to create a linear or radial gradient as background or border, check our [CSS Gradient Generator](#).

Hey! You found this booklet interesting? Support Converting Colors with the new Membership Option!

The pro membership hides all ads, plus gives you double the colors in the color bucket, and more awesome pro features!

[Learn more, Memberships starting at \\$2.50/m!](#)

**Follow me
on Twitter!**

@ConvertingColor