

Converting Colors

Hex(C2B3BE)

Have a look what the booklet for
Hex(C2B3BE) contains.

Hex(C2B3BE)	3
<i>Conversions</i>	4
<i>Details</i>	6
<i>Harmonies</i>	11
<i>Previews</i>	23
<i>Color Blindness Simulation</i>	26
<i>CSS Examples</i>	29

Color

Hex(C2B3BE)

Conversions

Conversions Part 1

Format	Color
Hex	C2B3BE
RGB	194, 179, 190
RGB Percent	76%, 70%, 75%
CMY	0.2392, 0.2980, 0.2549
CMYK	0.00, 0.08, 0.02, 0.24
HSL	316°, 11%, 73%
HSV	316°, 8%, 76%
XYZ	47.6625, 47.4272, 55.3575
YIQ	184.7390, 5.4090, 6.6010

Conversions

Conversions Part 2

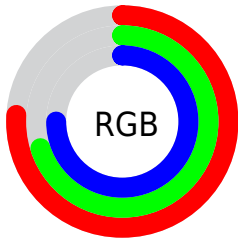
Format	Color
RYB	194, 179, 190
Decimal	12759998
CIELab	74.46, 7.31, -3.66
CIELCh	74, 8.176, 333.439
Yxy	47.4272, 0.3168, 0.3152
Android (android.graphics.Color)	4290950078 (0xFFC2B3BE)
YUV	184.7390, 2.5937, 8.1219
Hunter-Lab	68.8674, 3.0201, 0.5483

Details

The Hex color **C2B3BE** is a light color, and the websafe version is hex **CCCCCC**. A complement of this color would be **B3C2B7**, and the grayscale version is **B9B9B9**.

A 20% lighter version of the original color is **FBEBF6**, and **8C7E89** is the 20% darker color. If you saturate the color by 10%, you get **C2A0B9**, and if you desaturate by 10%, it is **C2C6C3**.

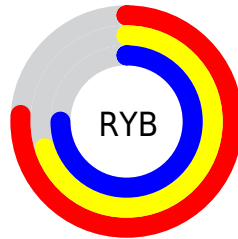
Distribution



Red (76%)

Green (70%)

Blue (75%)



Red (76%)

Yellow (70%)

Blue (75%)

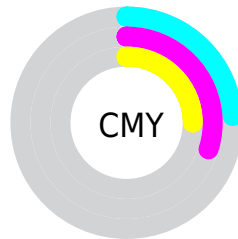


Cyan (0%)

Magenta (8%)

Yellow (2%)

Black (24%)



Cyan (24%)

Magenta (30%)

Yellow (25%)

Brightness & Saturation Gradients

These gradients show how the Hex color C2B3BE changes by changing the brightness by 10 percent. The first figure shows a shift by +10% for each color and the second figure -10%.

Similar to the brightness gradients but the following saturation gradients show a change of the Hex color C2B3BE by changing the saturation by 10% instead.

 C2B3BE

FFFFFF

 FBEBF6

 C2B3BE

 A798A3

 8C7E89

 73656F

 5A4D57

 433740

 2D212A

 190B15

 000000

 C2B3BE

 C2B3BE

 C2A0B9

 C2C6C3

 C28CB4

 C2DAC8

 C279AE

 C2EDCE

 C265A9

 C2FFD3

 C252A4

 C2FFD8

 C23F9F

 C2FFDD

 C22B9A

 C2FFE2

 C21895

 C2FFE7

 C2048F

 C2FFED

Harmonies

Analogous

The Analogous color harmony consists of three colors that are next to each other on the color wheel.



BAB5C4



C2B3BE



C7B2B7

Triad

The Triadic color harmony groups three colors that are evenly spaced from another and form a triangle on the color wheel.



C2B3BE



BDB7A8



A5BBBF

Complementary

The Complementary color scheme is a pair of colors which are on the opposite of each other on the color wheel.



C2B3BE



B3C2B7

Split Complementary

Split-complementary colors differ from the complementary color scheme. The scheme consists of three colors, the original color and two neighbors of the complement color.



A6BCB8



C2B3BE



B4B9AB

Square

The Square scheme is like the rectangle color scheme, but the four colors are evenly spaced on the color wheel.



C2B3BE



C4B4AA



ACBBB0



A9BAC4

Rectangle

The Rectangle color scheme consists of four colors that form a rectangle on the color wheel.



C2B3BE



C8B2B1



ACBBB0



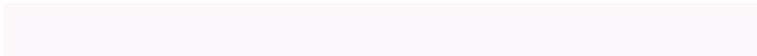
A5BCBD

Sweetspot

The Sweet Spot groups the original color and five complimentary colors.



C2B3BE



FCF7FB



B7B3C2



807D7F



000000



808080

Same Dimension

The Same Dimension uses a secret algorithm to generate beautiful new colors.



C2B3BE



FCE6F6



C2B3B7



61575E



A10076



210018

Inverse Universe

The Inverse Universe completely reimagines the original color for something new.



C2B3BE



FCE6F6



B3C2BE



61575E



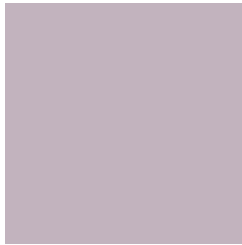
A10076



210018

Previews

White Background



This preview shows how the Hex color C2B3BE looks on a white background.

Color Contrast Check

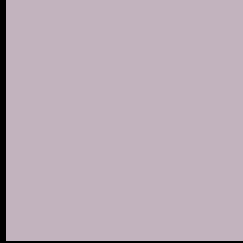
Large Text (above 18pt) WCAG AA × Fail

Any Text WCAG AA × Fail

Large Text (above 18pt) WCAG AAA × Fail

Any Text WCAG AAA × Fail

Black Background



This preview shows how the Hex color C2B3BE looks on a black background.

Color Contrast Check

Large Text (above 18pt) WCAG AA ✓ Pass

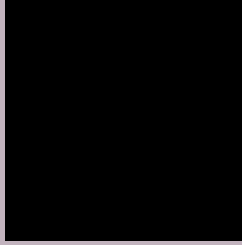
Any Text WCAG AA ✓ Pass

Large Text (above 18pt) WCAG AAA ✓ Pass

Any Text WCAG AAA ✓ Pass

If you want to check with other color combinations, try the [Color Contrast Checker](#).

Hex C2B3BE Background



This preview shows how black text looks on a background with the Hex color C2B3BE.



This preview shows how white text looks on a background with the Hex color C2B3BE.

Color Blindness Simulation

Color vision deficiency is a very complex topic, and I could not describe the different causes any better than Wikipedia does, so if you want to learn more, you should check out their [article about color blindness](#).

Dichromacy





Tritanopia
C2B3C1

Trichromacy



Original Color
C2B3BE

Protanomaly
BCB5BF

Deuteranomaly
C5B2BE

Tritanomaly
C2B3C0

Monochromacy



Original Color
C2B3BE

Achromatopsia
B9B9B9

Achromatomaly
BCB7BB

CSS Examples

Text

The CSS property to change the color of the text to Hex C2B3BE is called "color". The color property can be set on classes, ids or directly on the HTML element.

This example shows how text in the color #C2B3BE looks like.

```
.text, #text, p{  
    color:#C2B3BE  
}
```

If you want to add a text shadow in that color use the text-shadow property, you can generate a text shadow directly with our [CSS Text Shadow Generator](#).

Here you see how black text with a 4 pixel #C2B3BE colored shadow looks like.

```
.shadow{ text-shadow: 4px 4px 2px #C2B3BE }  
}
```

Border

The CSS property to change the border of an element to Hex C2B3BE is called "border". The border property can be set on classes, ids or directly on the HTML element.

This example shows the color as border, it can be applied via the CSS property "border" or "border-color".

```
.border, #border, table{ border:4px solid #C2B3BE }  
}
```

If only the border color should be changed use the property `border-color`.

```
.border{ border-color:#C2B3BE }
```

If you want to add a box shadow in that color use:

Here you see how a box with a 4 pixel #C2B3BE colored shadow looks like.

```
.boxshadow{ -moz-box-shadow:4px 4px 4px  
4px #C2B3BE; -webkit-box-shadow:4px 4px  
4px 4px #C2B3BE; box-shadow:4px 4px 4px  
4px #C2B3BE }
```

Background

The CSS property to change the background color of an element to Hex C2B3BE is called "background". The background property can be set on classes, ids or directly on the HTML element.

```
.background, #background, body{  
background:#C2B3BE }
```

If only the background color should be changed can be used:

```
.background{ background-color:#C2B3BE }
```

This example shows the color as background, it is applied via the CSS property "background".

To optimize and compress your CSS code, you can use our [online CSS compressor and optimizer](#) based on csstidy. If you want to create a linear or radial gradient as background or border, check our [CSS Gradient Generator](#).

Hey! You found this booklet interesting? Support Converting Colors with the new Membership Option!

The pro membership hides all ads, plus gives you double the colors in the color bucket, and more awesome pro features!

[Learn more, Memberships starting at \\$2.50/m!](#)

**Follow me
on Twitter!**

@ConvertingColor