

Converting Colors

Hex(C3908F)

Have a look what the booklet for
Hex(C3908F) contains.

Hex(C3908F)	3
<i>Conversions</i>	4
<i>Details</i>	6
<i>Harmonies</i>	11
<i>Previews</i>	23
<i>Color Blindness Simulation</i>	26
<i>CSS Examples</i>	29

Color

Hex(C3908F)

Conversions

Conversions Part 1

Format	Color
Hex	C3908F
RGB	195, 144, 143
RGB Percent	76%, 56%, 56%
CMY	0.2353, 0.4353, 0.4392
CMYK	0.00, 0.26, 0.27, 0.24
HSL	1°, 30%, 66%
HSV	1°, 27%, 76%
XYZ	37.4369, 33.5318, 30.4857
YIQ	159.1350, 30.7170, 10.5010

Conversions

Conversions Part 2

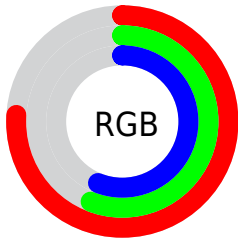
Format	Color
R_{YB}	195, 144, 143
Decimal	12816527
CIE _{Lab}	64.59, 19.15, 8.11
CIE _{LCh}	65, 20.792, 22.947
Yxy	33.5318, 0.3690, 0.3305
Android (android.graphics.Color)	4291006607 (0xFFC3908F)
YUV	159.1350, -7.9546, 31.4536
Hunter-Lab	57.9066, 14.0643, 9.3206

Details

The Hex color **C3908F** is a light color, and the websafe version is hex **CC9999**. A complement of this color would be **8FC2C3**, and the grayscale version is **9F9F9F**.

A 20% lighter version of the original color is **FCC6C5**, and **8C5D5D** is the 20% darker color. If you saturate the color by 10%, you get **C37D7C**, and if you desaturate by 10%, it is **C3A3A3**.

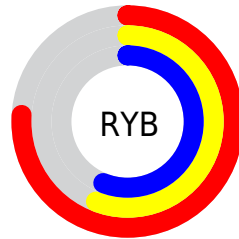
Distribution



Red (76%)

Green (56%)

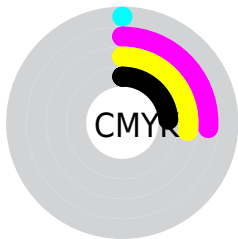
Blue (56%)



Red (76%)

Yellow (56%)

Blue (56%)

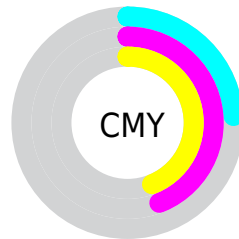


Cyan (0%)

Magenta (26%)

Yellow (27%)

Black (24%)



Cyan (24%)

Magenta (44%)

Yellow (44%)

Brightness & Saturation Gradients

These gradients show how the Hex color C3908F changes by changing the brightness by 10 percent. The first figure shows a shift by +10% for each color and the second figure -10%.

Similar to the brightness gradients but the following saturation gradients show a change of the Hex color C3908F by changing the saturation by 10% instead.



C3908F



C3908F

FFFFFF



A77675



FCC6C5



8C5D5D



FFE2E1



724545

FFFFFFD



582E2F



40191A



2A0100



000000



C3908F



C3908F



C37D7C



C3A3A3

 C36A68

 C3B6B6

 C35755

 C3C9CA

 C34441

 C3DCDD

 C3302E

 C3F0F1

 C31D1A

 C3FFFF

 C30A07

 C30400

Harmonies

Analogous

The Analogous color harmony consists of three colors that are next to each other on the color wheel.



BF90A2



C3908F



BD9480

Triad

The Triadic color harmony groups three colors that are evenly spaced from another and form a triangle on the color wheel.



C3908F



86A586



81A0C1

Complementary

The Complementary color scheme is a pair of colors which are on the opposite of each other on the color wheel.



C3908F



8FC2C3

Split Complementary

Split-complementary colors differ from the complementary color scheme. The scheme consists of three colors, the original color and two neighbors of the complement color.



6DA4BA



C3908F



73A797

Square

The Square scheme is like the rectangle color scheme, but the four colors are evenly spaced on the color wheel.



C3908F



9BA07A



69A7AA



9A99BF

Rectangle

The Rectangle color scheme consists of four colors that form a rectangle on the color wheel.



C3908F



B4987A



69A7AA



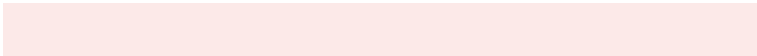
79A1C0

Sweetspot

The Sweet Spot groups the original color and five complimentary colors.



C3908F



FCE9E8



C38FC2



807373



000000



808080

Same Dimension

The Same Dimension uses a secret algorithm to generate beautiful new colors.



C3908F



FCADAC



C3AA8F



615757



A10300



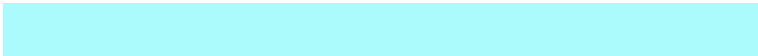
210100

Inverse Universe

The Inverse Universe completely reimagines the original color for something new.



8FC2C3



ACFBFC



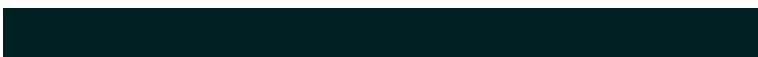
8FA8C3



576161



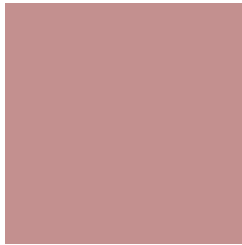
009EA1



002121

Previews

White Background



This preview shows how the Hex color C3908F looks on a white background.

Color Contrast Check

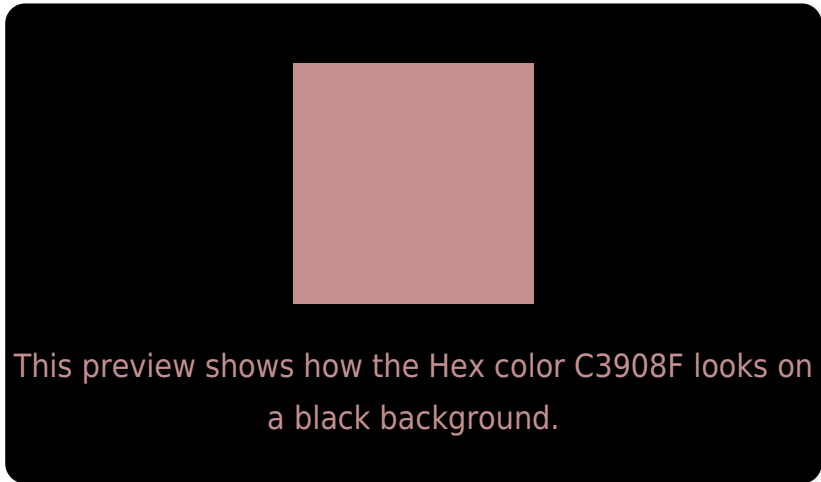
Large Text (above 18pt) WCAG AA × Fail

Any Text WCAG AA × Fail

Large Text (above 18pt) WCAG AAA × Fail

Any Text WCAG AAA × Fail

Black Background



Color Contrast Check

Large Text (above 18pt) WCAG AA ✓ Pass

Any Text WCAG AA ✓ Pass

Large Text (above 18pt) WCAG AAA ✓ Pass

Any Text WCAG AAA ✓ Pass

If you want to check with other color combinations, try the [Color Contrast Checker](#).

Hex C3908F Background



This preview shows how black text looks on a background with the Hex color C3908F.



This preview shows how white text looks on a background with the Hex color C3908F.

Color Blindness Simulation

Color vision deficiency is a very complex topic, and I could not describe the different causes any better than Wikipedia does, so if you want to learn more, you should check out their [article about color blindness](#).

Dichromacy





Tritanopia
C48E99

Trichromacy



Original Color
C3908F

Protanomaly
AD9893

Deuteranomaly
B8948E

Tritanomaly
C48F95

Monochromacy



Original Color
C3908F

Achromatopsia
9F9F9F

Achromatomaly
AC9A99

CSS Examples

Text

The CSS property to change the color of the text to Hex C3908F is called "color". The color property can be set on classes, ids or directly on the HTML element.

This example shows how text in the color #C3908F looks like.

```
.text, #text, p{  
    color:#C3908F  
}
```

If you want to add a text shadow in that color use the text-shadow property, you can generate a text shadow directly with our [CSS Text Shadow Generator](#).

Here you see how black text with a 4 pixel #C3908F colored shadow looks like.

```
.shadow{ text-shadow: 4px 4px 2px #C3908F
}
```

Border

The CSS property to change the border of an element to Hex C3908F is called "border". The border property can be set on classes, ids or directly on the HTML element.

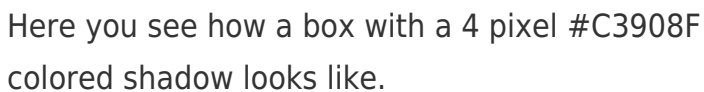
This example shows the color as border, it can be applied via the CSS property "border" or "border-color".

```
.border, #border, table{ border:4px solid
#C3908F }
```

If only the border color should be changed use the property `border-color`.

```
.border{ border-color:#C3908F }
```

If you want to add a box shadow in that color use:



Here you see how a box with a 4 pixel #C3908F colored shadow looks like.

```
.boxshadow{ -moz-box-shadow:4px 4px 4px  
4px #C3908F; -webkit-box-shadow:4px 4px  
4px 4px #C3908F; box-shadow:4px 4px 4px  
4px #C3908F }
```

Background

The CSS property to change the background color of an element to Hex C3908F is called "background". The background property can be set on classes, ids or directly on the HTML element.

```
.background, #background, body{  
background:#C3908F }
```

If only the background color should be changed can be used:

```
.background{ background-color:#C3908F }
```

This example shows the color as background, it is applied via the CSS property "background".

To optimize and compress your CSS code, you can use our [online CSS compressor and optimizer](#) based on csstidy. If you want to create a linear or radial gradient as background or border, check our [CSS Gradient Generator](#).

Hey! You found this booklet interesting? Support Converting Colors with the new Membership Option!

The pro membership hides all ads, plus gives you double the colors in the color bucket, and more awesome pro features!

[Learn more, Memberships starting at \\$2.50/m!](#)

**Follow me
on Twitter!**

@ConvertingColor