

# Converting Colors

Hex(C39291)

Have a look what the booklet for  
Hex(C39291) contains.

<b>Hex(C39291)</b> .....	3
<b><i>Conversions</i></b> .....	4
<b><i>Details</i></b> .....	6
<b><i>Harmonies</i></b> .....	11
<b><i>Previews</i></b> .....	23
<b><i>Color Blindness Simulation</i></b> .....	26
<b><i>CSS Examples</i></b> .....	29

# **Color**

**Hex(C39291)**

# Conversions

## Conversions Part 1

<b>Format</b>	<b>Color</b>
Hex	C39291
RGB	195, 146, 145
RGB Percent	76%, 57%, 57%
CMY	0.2353, 0.4275, 0.4314
CMYK	0.00, 0.25, 0.26, 0.24
HSL	1°, 29%, 67%
HSV	1°, 26%, 76%
XYZ	37.8954, 34.2042, 31.3928
YIQ	160.5370, 29.5250, 10.0770

# Conversions

## Conversions Part 2

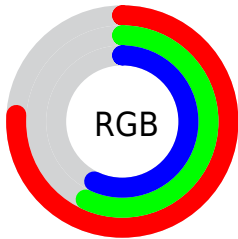
<b>Format</b>	<b>Color</b>
<a href="#">RYB</a>	<a href="#">195, 146, 145</a>
Decimal	<a href="#">12817041</a>
CIELab	<a href="#">65.12, 18.33, 7.74</a>
CIElCh	<a href="#">65, 19.899, 22.903</a>
Yxy	<a href="#">34.2042, 0.3662, 0.3305</a>
Android (android.graphics.Color)	<a href="#">4291007121 (0xFFC39291)</a>
YUV	<a href="#">160.5370, -7.6597, 30.2241</a>
Hunter-Lab	<a href="#">58.4844, 13.3128, 9.1138</a>

# Details

The Hex color **C39291** is a light color, and the websafe version is hex **CC9999**. A complement of this color would be **91C2C3**, and the grayscale version is **A1A1A1**.

A 20% lighter version of the original color is **FCC8C7**, and **8C5F5F** is the 20% darker color. If you saturate the color by 10%, you get **C37F7E**, and if you desaturate by 10%, it is **C3A5A4**.

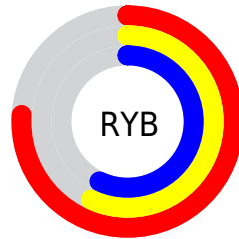
# Distribution



Red (76%)

Green (57%)

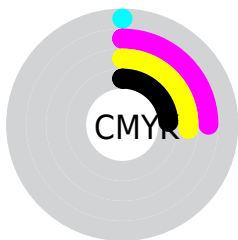
Blue (57%)



Red (76%)

Yellow (57%)

Blue (57%)

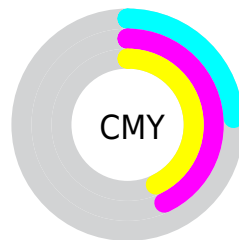


Cyan (0%)

Magenta (25%)

Yellow (26%)

Black (24%)



Cyan (24%)

Magenta (43%)

Yellow (43%)

# Brightness & Saturation Gradients

These gradients show how the Hex color C39291 changes by changing the brightness by 10 percent. The first figure shows a shift by +10% for each color and the second figure -10%.

Similar to the brightness gradients but the following saturation gradients show a change of the Hex color C39291 by changing the saturation by 10% instead.



 C39291

 C39291

FFFFFF

 A77877

 FCC8C7

 8C5F5F

 FFE4E3

 724747

 593031

 401B1C

 2A0301

 000000

 C39291

 C39291

 C37F7E

 C3A5A4

 C36C6A

 C3B8B8

 C35957

 C3CBCC

 C34643

 C3DEDF

 C33230

 C3F2F3

 C31F1C

 C3FFFF

 C30C09

 C30400

# Harmonies

## Analogous

The Analogous color harmony consists of three colors that are next to each other on the color wheel.



BF92A3



C39291



BD9682

# Triad

The Triadic color harmony groups three colors that are evenly spaced from another and form a triangle on the color wheel.



C39291



89A688



84A1C1

# Complementary

The Complementary color scheme is a pair of colors which are on the opposite of each other on the color wheel.



C39291



91C2C3

# Split Complementary

Split-complementary colors differ from the complementary color scheme. The scheme consists of three colors, the original color and two neighbors of the complement color.



71A6BA



C39291



77A899

# Square

The Square scheme is like the rectangle color scheme, but the four colors are evenly spaced on the color wheel.



C39291



9DA17D



6DA8AB



9C9BBF

# Rectangle

The Rectangle color scheme consists of four colors that form a rectangle on the color wheel.



C39291



B5997C



6DA8AB



7DA3C0

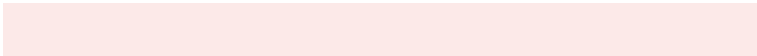


# Sweetspot

The Sweet Spot groups the original color and five complimentary colors.



C39291



FCE9E8



C391C2



807373



000000



808080



# Same Dimension

The Same Dimension uses a secret algorithm to generate beautiful new colors.



C39291



FCB0AE



C3AB91



615757



A10300



210100

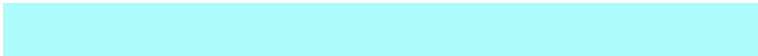


# Inverse Universe

The Inverse Universe completely reimagines the original color for something new.



91C2C3



AEFBFC



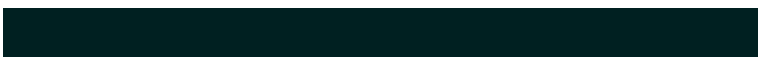
91A9C3



576161



009DA1

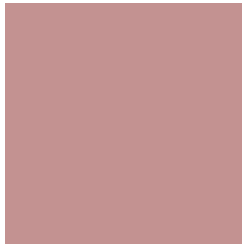


002021



# Previews

## White Background



This preview shows how the Hex color C39291 looks on a white background.

## Color Contrast Check

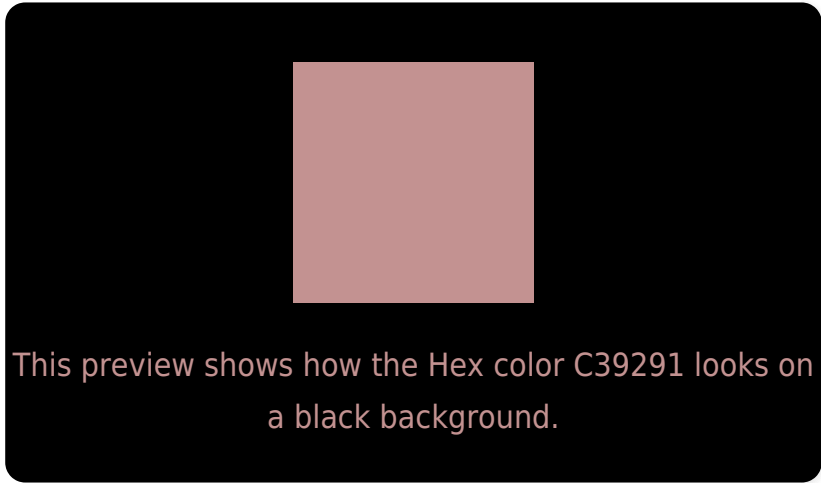
Large Text (above 18pt) WCAG AA × Fail

Any Text WCAG AA × Fail

Large Text (above 18pt) WCAG AAA × Fail

Any Text WCAG AAA × Fail

# Black Background



## Color Contrast Check

Large Text (above 18pt) WCAG AA ✓ Pass

Any Text WCAG AA ✓ Pass

Large Text (above 18pt) WCAG AAA ✓ Pass

Any Text WCAG AAA ✓ Pass

If you want to check with other color combinations, try the [Color Contrast Checker](#).



## Hex C39291 Background



This preview shows how black text looks on a background with the Hex color C39291.

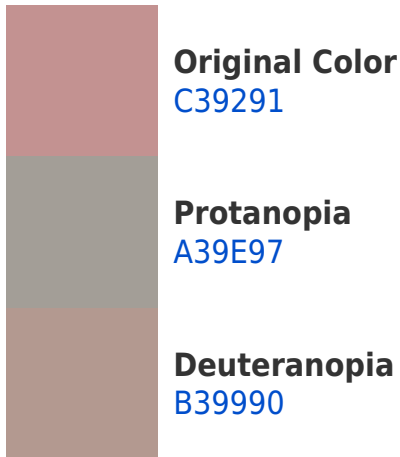


This preview shows how white text looks on a background with the Hex color C39291.

# Color Blindness Simulation

Color vision deficiency is a very complex topic, and I could not describe the different causes any better than Wikipedia does, so if you want to learn more, you should check out their [article about color blindness](#).

## Dichromacy





**Tritanopia**  
C4909B

# Trichromacy



**Original Color**  
C39291

**Protanomaly**  
AF9A95

**Deuteranomaly**  
B99690

**Tritanomaly**  
C49197

# Monochromacy



**Original Color**  
C39291

**Achromatopsia**  
A1A1A1

**Achromatomaly**  
AD9C9B

# CSS Examples

## Text

The CSS property to change the color of the text to Hex C39291 is called "color". The color property can be set on classes, ids or directly on the HTML element.

This example shows how text in the color #C39291 looks like.

```
.text, #text, p{  
    color:#C39291  
}
```

If you want to add a text shadow in that color use the text-shadow property, you can generate a text shadow directly with our [CSS Text Shadow Generator](#).

Here you see how black text with a 4 pixel #C39291 colored shadow looks like.

```
.shadow{ text-shadow: 4px 4px 2px #C39291
}
```

## Border

The CSS property to change the border of an element to Hex C39291 is called "border". The border property can be set on classes, ids or directly on the HTML element.

This example shows the color as border, it can be applied via the CSS property "border" or "border-color".

```
.border, #border, table{ border:4px solid
#C39291 }
```

If only the border color should be changed use the property `border-color`.

```
.border{ border-color:#C39291 }
```

If you want to add a box shadow in that color use:

Here you see how a box with a 4 pixel #C39291 colored shadow looks like.

```
.boxshadow{ -moz-box-shadow:4px 4px 4px  
4px #C39291; -webkit-box-shadow:4px 4px  
4px 4px #C39291; box-shadow:4px 4px 4px  
4px #C39291 }
```

# Background

The CSS property to change the background color of an element to Hex C39291 is called "background". The background property can be set on classes, ids or directly on the HTML element.

```
.background, #background, body{  
background:#C39291 }
```

If only the background color should be changed can be used:

```
.background{ background-color:#C39291 }
```

This example shows the color as background, it is applied via the CSS property "background".

To optimize and compress your CSS code, you can use our [online CSS compressor and optimizer](#) based on csstidy. If you want to create a linear or radial gradient as background or border, check our [CSS Gradient Generator](#).



Hey! You found this booklet interesting? Support Converting Colors with the new Membership Option!

The pro membership hides all ads, plus gives you double the colors in the color bucket, and more awesome pro features!

**[Learn more, Memberships starting at \\$2.50/m!](#)**

**Follow me  
on Twitter!**

@ConvertingColor