

Converting Colors

Hex(C3966E)

Have a look what the booklet for
Hex(C3966E) contains.

Hex(C3966E)	3
<i>Conversions</i>	4
<i>Details</i>	6
<i>Harmonies</i>	11
<i>Previews</i>	23
<i>Color Blindness Simulation</i>	26
<i>CSS Examples</i>	29

Color

Hex(C3966E)

Conversions

Conversions Part 1

Format	Color
Hex	C3966E
RGB	195, 150, 110
RGB Percent	76%, 59%, 43%
CMY	0.2353, 0.4118, 0.5686
CMYK	0.00, 0.23, 0.44, 0.24
HSL	28°, 41%, 60%
HSV	28°, 44%, 76%
XYZ	36.2265, 34.5406, 19.5095
YIQ	158.8950, 39.6600, -2.9000

Conversions

Conversions Part 2

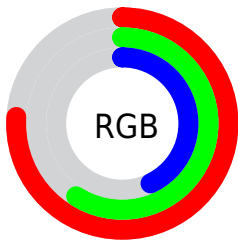
Format	Color
RYB	195, 186, 110
Decimal	12818030
CIELab	65.39, 11.70, 27.57
CIELCh	65, 29.955, 67.001
Yxy	34.5406, 0.4013, 0.3826
Android (android.graphics.Color)	4291008110 (0xFFC3966E)
YUV	158.8950, -24.1052, 31.6641
Hunter-Lab	58.7712, 7.1774, 21.4582

Details

The Hex color **C3966E** is a light color, and the websafe version is hex **CC9966**. A complement of this color would be **6E9BC3**, and the grayscale version is **9F9F9F**.

A 20% lighter version of the original color is **FDCCA2**, and **8B633E** is the 20% darker color. If you saturate the color by 10%, you get **C38C5B**, and if you desaturate by 10%, it is **C3A082**.

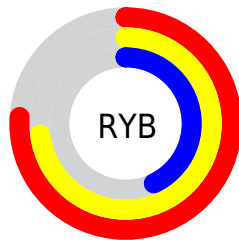
Distribution



Red (76%)

Green (59%)

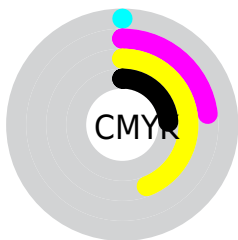
Blue (43%)



Red (76%)

Yellow (73%)

Blue (43%)

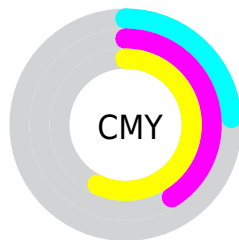


Cyan (0%)

Magenta (23%)

Yellow (44%)

Black (24%)



Cyan (24%)

Magenta (41%)

Yellow (57%)

Brightness & Saturation Gradients

These gradients show how the Hex color C3966E changes by changing the brightness by 10 percent. The first figure shows a shift by +10% for each color and the second figure -10%.

Similar to the brightness gradients but the following saturation gradients show a change of the Hex color C3966E by changing the saturation by 10% instead.

 C3966E

 C3966E

FFFFFF

 A77C55

 FDCCA2

 8B633E

 FFE8BD

 704B27

 FFFFFD9

 563511

 FFFFFFF6

 3E1F00

 250A00

 000000

 C3966E

 C3966E

 C38C5B

 C3A082

 C38147

 C3AB95

 C37733

 C3B5A9

 C36D20

 C3BFBC

 C3620C

 C3CACF

 C35C00

 C3D4E3

 C3DEF6

 C3E9FF

 C3F3FF

Harmonies

Analogous

The Analogous color harmony consists of three colors that are next to each other on the color wheel.



D28E80



C3966E



AB9F69

Triad

The Triadic color harmony groups three colors that are evenly spaced from another and form a triangle on the color wheel.



C3966E



51AEA4



AB96CA

Complementary

The Complementary color scheme is a pair of colors which are on the opposite of each other on the color wheel.



C3966E



6E9BC3

Split Complementary

Split-complementary colors differ from the complementary color scheme. The scheme consists of three colors, the original color and two neighbors of the complement color.



859FD4



C3966E



45ACBE

Square

The Square scheme is like the rectangle color scheme, but the four colors are evenly spaced on the color wheel.



C3966E



6EAC89



5DA7CF



C68EB4

Rectangle

The Rectangle color scheme consists of four colors that form a rectangle on the color wheel.



C3966E



98A46E



5DA7CF



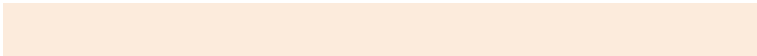
9F99CE

Sweetspot

The Sweet Spot groups the original color and five complimentary colors.



C3966E



FCEBDC



C36E9B



80756B



000000



808080

Same Dimension

The Same Dimension uses a secret algorithm to generate beautiful new colors.



C3966E



FCB779



C3C06E



615C57



A14C00



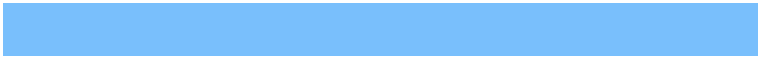
211000

Inverse Universe

The Inverse Universe completely reimagines the original color for something new.



6E9BC3



79BFFC



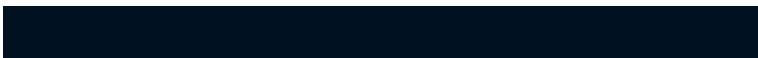
6E71C3



575C61



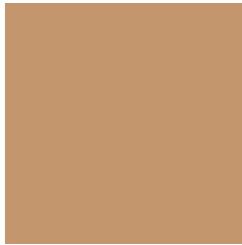
0055A1



001221

Previews

White Background



This preview shows how the Hex color C3966E looks on a white background.

Color Contrast Check

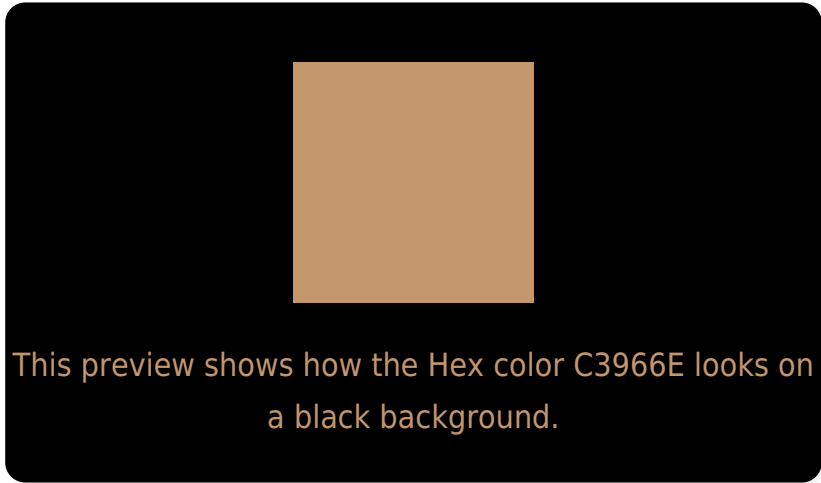
Large Text (above 18pt) WCAG AA × Fail

Any Text WCAG AA × Fail

Large Text (above 18pt) WCAG AAA × Fail

Any Text WCAG AAA × Fail

Black Background



Color Contrast Check

Large Text (above 18pt) WCAG AA ✓ Pass

Any Text WCAG AA ✓ Pass

Large Text (above 18pt) WCAG AAA ✓ Pass

Any Text WCAG AAA ✓ Pass

If you want to check with other color combinations, try the [Color Contrast Checker](#).

Hex C3966E Background



This preview shows how black text looks on a background with the Hex color C3966E.



This preview shows how white text looks on a background with the Hex color C3966E.

Color Blindness Simulation

Color vision deficiency is a very complex topic, and I could not describe the different causes any better than Wikipedia does, so if you want to learn more, you should check out their [article about color blindness](#).

Dichromacy





Tritanopia
C7909B

Trichromacy



Monochromacy



CSS Examples

Text

The CSS property to change the color of the text to Hex C3966E is called "color". The color property can be set on classes, ids or directly on the HTML element.

This example shows how text in the color #C3966E looks like.

```
.text, #text, p{  
    color:#C3966E  
}
```

If you want to add a text shadow in that color use the text-shadow property, you can generate a text shadow directly with our [CSS Text Shadow Generator](#).

Here you see how black text with a 4 pixel #C3966E colored shadow looks like.

```
.shadow{ text-shadow: 4px 4px 2px #C3966E
}
```

Border

The CSS property to change the border of an element to Hex C3966E is called "border". The border property can be set on classes, ids or directly on the HTML element.

This example shows the color as border, it can be applied via the CSS property "border" or "border-color".

```
.border, #border, table{ border:4px solid
#C3966E }
```

If only the border color should be changed use the property `border-color`.

```
.border{ border-color:#C3966E }
```

If you want to add a box shadow in that color use:

Here you see how a box with a 4 pixel #C3966E colored shadow looks like.

```
.boxshadow{ -moz-box-shadow:4px 4px 4px  
4px #C3966E; -webkit-box-shadow:4px 4px  
4px 4px #C3966E; box-shadow:4px 4px 4px  
4px #C3966E }
```

Background

The CSS property to change the background color of an element to Hex C3966E is called "background". The background property can be set on classes, ids or directly on the HTML element.

```
.background, #background, body{  
background:#C3966E }
```

If only the background color should be changed can be used:

```
.background{ background-color:#C3966E }
```

This example shows the color as background, it is applied via the CSS property "background".

To optimize and compress your CSS code, you can use our [online CSS compressor and optimizer](#) based on csstidy. If you want to create a linear or radial gradient as background or border, check our [CSS Gradient Generator](#).

Hey! You found this booklet interesting? Support Converting Colors with the new Membership Option!

The pro membership hides all ads, plus gives you double the colors in the color bucket, and more awesome pro features!

[Learn more, Memberships starting at \\$2.50/m!](#)

**Follow me
on Twitter!**

@ConvertingColor