

Converting Colors

Hex(C3999B)

Have a look what the booklet for
Hex(C3999B) contains.

Hex(C3999B)	3
<i>Conversions</i>	4
<i>Details</i>	6
<i>Harmonies</i>	11
<i>Previews</i>	23
<i>Color Blindness Simulation</i>	26
<i>CSS Examples</i>	29

Color

Hex(C3999B)

Conversions

Conversions Part 1

Format	Color
Hex	C3999B
RGB	195, 153, 155
RGB Percent	76%, 60%, 61%
CMY	0.2353, 0.4000, 0.3922
CMYK	0.00, 0.22, 0.21, 0.24
HSL	357°, 26%, 68%
HSV	357°, 22%, 76%
XYZ	39.8133, 36.7511, 36.0056
YIQ	165.7860, 24.3900, 9.5260

Conversions

Conversions Part 2

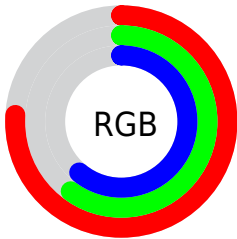
Format	Color
RYB	195, 153, 155
Decimal	12818843
CIELab	67.09, 15.96, 4.95
CIElCh	67, 16.716, 17.243
Yxy	36.7511, 0.3537, 0.3265
Android (android.graphics.Color)	4291008923 (0xFFC3999B)
YUV	165.7860, -5.3175, 25.6207
Hunter-Lab	60.6227, 11.1382, 7.2218

Details

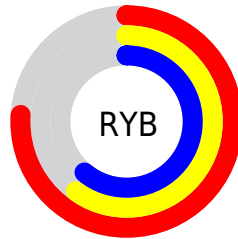
The Hex color **C3999B** is a light color, and the websafe version is hex **CC9999**. A complement of this color would be **99C3C1**, and the grayscale version is **A6A6A6**.

A 20% lighter version of the original color is **FCCFD1**, and **8D6668** is the 20% darker color. If you saturate the color by 10%, you get **C38688**, and if you desaturate by 10%, it is **C3ACAE**.

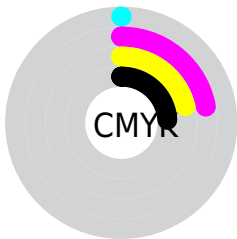
Distribution



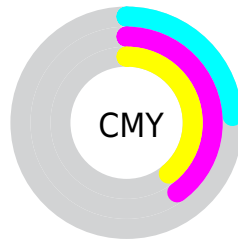
- Red (76%)
- Green (60%)
- Blue (61%)



- Red (76%)
- Yellow (60%)
- Blue (61%)



- Cyan (0%)
- Magenta (22%)
- Yellow (21%)
- Black (24%)



- Cyan (24%)
- Magenta (40%)
- Yellow (39%)

Brightness & Saturation Gradients

These gradients show how the Hex color C3999B changes by changing the brightness by 10 percent. The first figure shows a shift by +10% for each color and the second figure -10%.

Similar to the brightness gradients but the following saturation gradients show a change of the Hex color C3999B by changing the saturation by 10% instead.

 C3999B

 C3999B

FFFFFF

 A77F81

 FCCFD1

 8D6668

 FFECEE

 734E50

 593739

 412124

 2A0C0E

 090000

 000000

 C3999B

 C3999B

 C38688

 C3ACAE

 C37276

 C3C0C0

 C35F63

 C3D3D3

 C34B51

 C3E7E5

 C3383E

 C3FBF8

 C3242C

 C3FFFF

 C31119

 C30009

Harmonies

Analogous

The Analogous color harmony consists of three colors that are next to each other on the color wheel.



BE99AA



C3999B



C09C8E

Triad

The Triadic color harmony groups three colors that are evenly spaced from another and form a triangle on the color wheel.



C3999B



95A98F



8BA7C0

Complementary

The Complementary color scheme is a pair of colors which are on the opposite of each other on the color wheel.



C3999B



99C3C1

Split Complementary

Split-complementary colors differ from the complementary color scheme. The scheme consists of three colors, the original color and two neighbors of the complement color.



7EAAB9



C3999B



85AC9C

Square

The Square scheme is like the rectangle color scheme, but the four colors are evenly spaced on the color wheel.



C3999B



A6A587



7CACAC



9EA2C0

Rectangle

The Rectangle color scheme consists of four colors that form a rectangle on the color wheel.



C3999B



B99E88



7CACAC



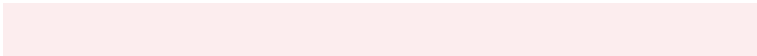
85A8BF

Sweetspot

The Sweet Spot groups the original color and five complimentary colors.



C3999B



FCEDEE



C199C3



807777



000000



808080

Same Dimension

The Same Dimension uses a secret algorithm to generate beautiful new colors.



C3999B



FCBBBE



C3AC99



615758



A10008



210002

Inverse Universe

The Inverse Universe completely reimagines the original color for something new.



C3999B



FCBBBE



99B0C3



615758



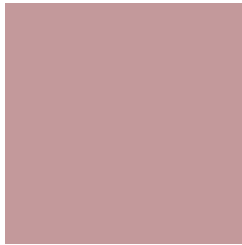
A10008



210002

Previews

White Background



This preview shows how the Hex color C3999B looks on a white background.

Color Contrast Check

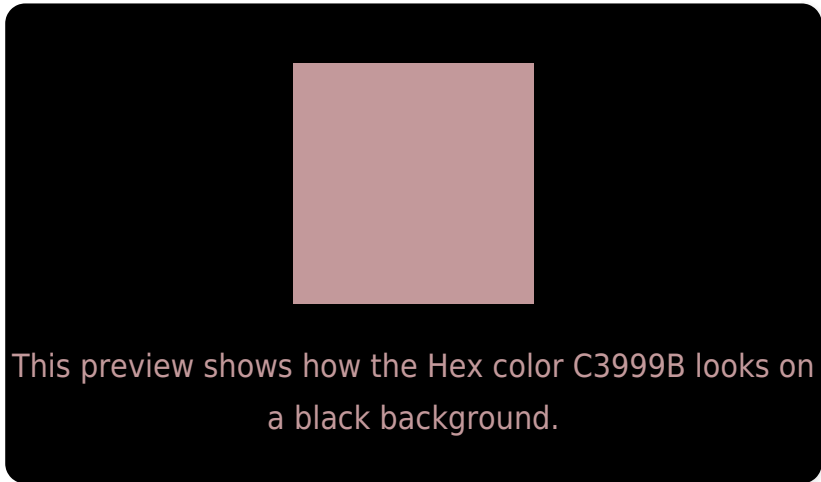
Large Text (above 18pt) WCAG AA × Fail

Any Text WCAG AA × Fail

Large Text (above 18pt) WCAG AAA × Fail

Any Text WCAG AAA × Fail

Black Background



Color Contrast Check

Large Text (above 18pt) WCAG AA ✓ Pass

Any Text WCAG AA ✓ Pass

Large Text (above 18pt) WCAG AAA ✓ Pass

Any Text WCAG AAA ✓ Pass

If you want to check with other color combinations, try the [Color Contrast Checker](#).

Hex C3999B Background



This preview shows how black text looks on a background with the Hex color C3999B.



This preview shows how white text looks on a background with the Hex color C3999B.

Color Blindness Simulation

Color vision deficiency is a very complex topic, and I could not describe the different causes any better than Wikipedia does, so if you want to learn more, you should check out their [article about color blindness](#).

Dichromacy



Original Color
C3999B

Protanopia
A7A3A0

Deuteranopia
B79E9A



Tritanopia
C498A3

Trichromacy



Original Color
C3999B

Protanomaly
B19F9E

Deuteranomaly
BB9C9A

Tritanomaly
C498A0

Monochromacy



Original Color
C3999B

Achromatopsia
A6A6A6

Achromatomaly
B1A1A2

CSS Examples

Text

The CSS property to change the color of the text to Hex C3999B is called "color". The color property can be set on classes, ids or directly on the HTML element.

This example shows how text in the color #C3999B looks like.

```
.text, #text, p{  
    color:#C3999B  
}
```

If you want to add a text shadow in that color use the text-shadow property, you can generate a text shadow directly with our [CSS Text Shadow Generator](#).

Here you see how black text with a 4 pixel #C3999B colored shadow looks like.

```
.shadow{ text-shadow: 4px 4px 2px #C3999B
}
```

Border

The CSS property to change the border of an element to Hex C3999B is called "border". The border property can be set on classes, ids or directly on the HTML element.

This example shows the color as border, it can be applied via the CSS property "border" or "border-color".

```
.border, #border, table{ border:4px solid
#C3999B }
```

If only the border color should be changed use the property border-color.

```
.border{ border-color:#C3999B }
```

If you want to add a box shadow in that color use:

Here you see how a box with a 4 pixel #C3999B colored shadow looks like.

```
.boxshadow{ -moz-box-shadow:4px 4px 4px  
4px #C3999B; -webkit-box-shadow:4px 4px  
4px 4px #C3999B; box-shadow:4px 4px 4px  
4px #C3999B }
```

Background

The CSS property to change the background color of an element to Hex C3999B is called "background". The background property can be set on classes, ids or directly on the HTML element.

```
.background, #background, body{  
background:#C3999B }
```

If only the background color should be changed can be used:

```
.background{ background-color:#C3999B }
```

This example shows the color as background, it is applied via the CSS property "background".

To optimize and compress your CSS code, you can use our [online CSS compressor and optimizer](#) based on csstidy. If you want to create a linear or radial gradient as background or border, check our [CSS Gradient Generator](#).

Hey! You found this booklet interesting? Support Converting Colors with the new Membership Option!

The pro membership hides all ads, plus gives you double the colors in the color bucket, and more awesome pro features!

[Learn more, Memberships starting at \\$2.50/m!](#)

**Follow me
on Twitter!**

@ConvertingColor