

Converting Colors

Hex(C3A085)

Have a look what the booklet for
Hex(C3A085) contains.

Hex(C3A085)	3
<i>Conversions</i>	4
<i>Details</i>	6
<i>Harmonies</i>	11
<i>Previews</i>	23
<i>Color Blindness Simulation</i>	26
<i>CSS Examples</i>	29

Color

Hex(C3A085)

Conversions

Conversions Part 1

Format	Color
Hex	C3A085
RGB	195, 160, 133
RGB Percent	76%, 63%, 52%
CMY	0.2353, 0.3725, 0.4784
CMYK	0.00, 0.18, 0.32, 0.24
HSL	26°, 34%, 64%
HSV	26°, 32%, 76%
XYZ	39.3101, 38.4372, 27.5375
YIQ	167.3870, 29.5270, -0.9770

Conversions

Conversions Part 2

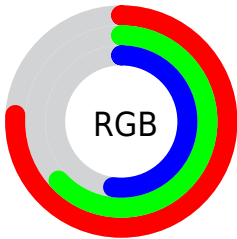
Format	Color
R_{YB}	195, 181, 133
Decimal	12820613
CIE _{Lab}	68.34, 8.99, 18.94
CIE _{LCh}	68, 20.962, 64.614
Yxy	38.4372, 0.3734, 0.3651
Android (android.graphics.Color)	4291010693 (0xFFC3A085)
YUV	167.3870, -16.9528, 24.2166
Hunter-Lab	61.9977, 4.6833, 17.0635

Details

The Hex color **C3A085** is a light color, and the websafe version is hex **CC9999**. A complement of this color would be **85A8C3**, and the grayscale version is **A8A8A8**.

A 20% lighter version of the original color is **FCD7BA**, and **8C6D53** is the 20% darker color. If you saturate the color by 10%, you get **C39572**, and if you desaturate by 10%, it is **C3AB99**.

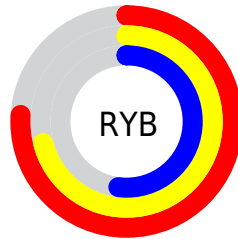
Distribution



Red (76%)

Green (63%)

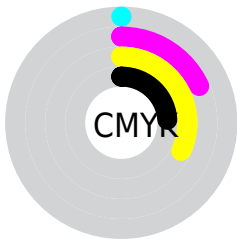
Blue (52%)



Red (76%)

Yellow (71%)

Blue (52%)

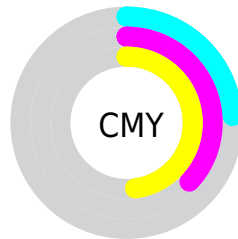


Cyan (0%)

Magenta (18%)

Yellow (32%)

Black (24%)



Cyan (24%)

Magenta (37%)

Yellow (48%)

Brightness & Saturation Gradients

These gradients show how the Hex color C3A085 changes by changing the brightness by 10 percent. The first figure shows a shift by +10% for each color and the second figure -10%.

Similar to the brightness gradients but the following saturation gradients show a change of the Hex color C3A085 by changing the saturation by 10% instead.

 C3A085

 C3A085

FFFFFF

 A7866C

 FCD7BA

 8C6D53

 FFF3D6

 72543C

 FFFFF2

 583D26

 402711

 291300

 050000

 000000

 C3A085

 C3A085

 C39572

 C3AB99

 C38A5E

 C3B6AC

 C37F4B

 C3C1C0

 C37437

 C3CCD3

 C36924

 C3D7E7

 C35E10

 C3E2FA

 C35500

 C3EDFF

 C3F8FF

 C3FFFF

Harmonies

Analogous

The Analogous color harmony consists of three colors that are next to each other on the color wheel.



CD9B92



C3A085



B2A681

Triad

The Triadic color harmony groups three colors that are evenly spaced from another and form a triangle on the color wheel.



C3A085



77B2A9



AEA1C6

Complementary

The Complementary color scheme is a pair of colors which are on the opposite of each other on the color wheel.



C3A085



85A8C3

Split Complementary

Split-complementary colors differ from the complementary color scheme. The scheme consists of three colors, the original color and two neighbors of the complement color.



94A7CC



C3A085



72B1BB

Square

The Square scheme is like the rectangle color scheme, but the four colors are evenly spaced on the color wheel.



C3A085



88B096



7DADC8



C29BB7

Rectangle

The Rectangle color scheme consists of four colors that form a rectangle on the color wheel.



C3A085



A4AA84



7DADC8



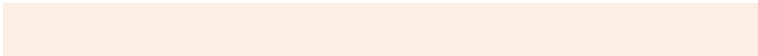
A5A3C9

Sweetspot

The Sweet Spot groups the original color and five complimentary colors.



C3A085



FCEEE3



C385A8



807770



000000



808080

Same Dimension

The Same Dimension uses a secret algorithm to generate beautiful new colors.



C3A085



FCC69D



C3BF85



615B57



A14600



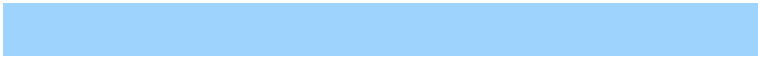
210E00

Inverse Universe

The Inverse Universe completely reimagines the original color for something new.



85A8C3



9DD3FC



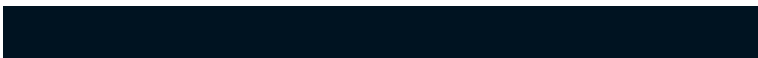
8589C3



575D61



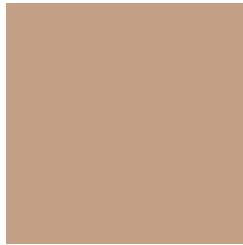
005BA1



001321

Previews

White Background



This preview shows how the Hex color C3A085 looks on a white background.

Color Contrast Check

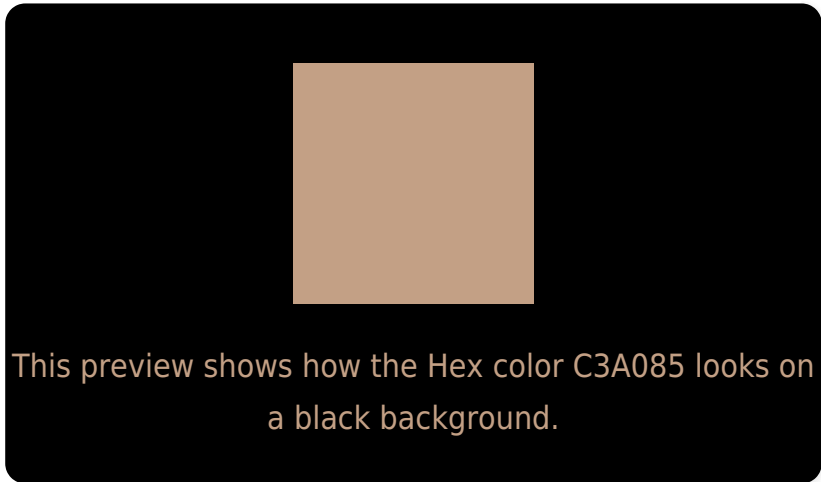
Large Text (above 18pt) WCAG AA × Fail

Any Text WCAG AA × Fail

Large Text (above 18pt) WCAG AAA × Fail

Any Text WCAG AAA × Fail

Black Background



Color Contrast Check

Large Text (above 18pt) WCAG AA ✓ Pass

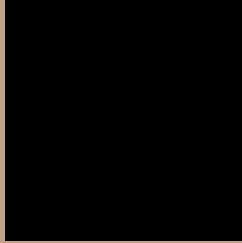
Any Text WCAG AA ✓ Pass

Large Text (above 18pt) WCAG AAA ✓ Pass

Any Text WCAG AAA ✓ Pass

If you want to check with other color combinations, try the [Color Contrast Checker](#).

Hex C3A085 Background



This preview shows how black text looks on a background with the Hex color C3A085.



This preview shows how white text looks on a background with the Hex color C3A085.

Color Blindness Simulation

Color vision deficiency is a very complex topic, and I could not describe the different causes any better than Wikipedia does, so if you want to learn more, you should check out their [article about color blindness](#).

Dichromacy





Tritanopia
C79BA7

Trichromacy



Original Color
C3A085

Protanomaly
B8A487

Deuteranomaly
C2A085

Tritanomaly
C69D9B

Monochromacy



Original Color
C3A085

Achromatopsia
A7A7A7

Achromatomaly
B1A49B

CSS Examples

Text

The CSS property to change the color of the text to Hex C3A085 is called "color". The color property can be set on classes, ids or directly on the HTML element.

This example shows how text in the color #C3A085 looks like.

```
.text, #text, p{  
    color:#C3A085  
}
```

If you want to add a text shadow in that color use the text-shadow property, you can generate a text shadow directly with our [CSS Text Shadow Generator](#).

Here you see how black text with a 4 pixel #C3A085 colored shadow looks like.

```
.shadow{ text-shadow: 4px 4px 2px #C3A085
}
```

Border

The CSS property to change the border of an element to Hex C3A085 is called "border". The border property can be set on classes, ids or directly on the HTML element.

This example shows the color as border, it can be applied via the CSS property "border" or "border-color".

```
.border, #border, table{ border:4px solid
#C3A085 }
```

If only the border color should be changed use the property `border-color`.

```
.border{ border-color:#C3A085 }
```

If you want to add a box shadow in that color use:

Here you see how a box with a 4 pixel #C3A085 colored shadow looks like.

```
.boxshadow{ -moz-box-shadow:4px 4px 4px  
4px #C3A085; -webkit-box-shadow:4px 4px  
4px 4px #C3A085; box-shadow:4px 4px 4px  
4px #C3A085 }
```

Background

The CSS property to change the background color of an element to Hex C3A085 is called "background". The background property can be set on classes, ids or directly on the HTML element.

```
.background, #background, body{  
background:#C3A085 }
```

If only the background color should be changed can be used:

```
.background{ background-color:#C3A085 }
```

This example shows the color as background, it is applied via the CSS property "background".

To optimize and compress your CSS code, you can use our [online CSS compressor and optimizer](#) based on csstidy. If you want to create a linear or radial gradient as background or border, check our [CSS Gradient Generator](#).

Hey! You found this booklet interesting? Support Converting Colors with the new Membership Option!

The pro membership hides all ads, plus gives you double the colors in the color bucket, and more awesome pro features!

[Learn more, Memberships starting at \\$2.50/m!](#)

**Follow me
on Twitter!**

@ConvertingColor