

Converting Colors

Hex(C3A17C)

Have a look what the booklet for
Hex(C3A17C) contains.

Hex(C3A17C)	3
<i>Conversions</i>	4
<i>Details</i>	6
<i>Harmonies</i>	11
<i>Previews</i>	23
<i>Color Blindness Simulation</i>	26
<i>CSS Examples</i>	29

Color

Hex(C3A17C)

Conversions

Conversions Part 1

Format	Color
Hex	C3A17C
RGB	195, 161, 124
RGB Percent	76%, 63%, 49%
CMY	0.2353, 0.3686, 0.5137
CMYK	0.00, 0.17, 0.36, 0.24
HSL	31°, 37%, 63%
HSV	31°, 36%, 76%
XYZ	38.8886, 38.5471, 24.4595
YIQ	166.9480, 32.1410, -4.2990

Conversions

Conversions Part 2

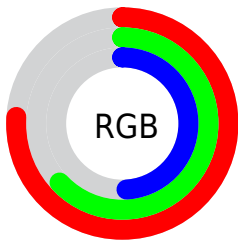
Format	Color
RYB	189, 195, 124
Decimal	12820860
CIELab	68.42, 7.30, 23.98
CIELCh	68, 25.064, 73.057
Yxy	38.5471, 0.3817, 0.3783
Android (android.graphics.Color)	4291010940 (0xFFC3A17C)
YUV	166.9480, -21.1734, 24.6016
Hunter-Lab	62.0863, 3.1550, 20.1026

Details

The Hex color **C3A17C** is a light color, and the websafe version is hex **CC9966**. A complement of this color would be **7C9EC3**, and the grayscale version is **A7A7A7**.

A 20% lighter version of the original color is **FDD8B1**, and **8C6E4B** is the 20% darker color. If you saturate the color by 10%, you get **C39869**, and if you desaturate by 10%, it is **C3AA90**.

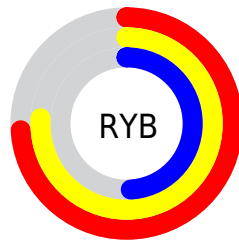
Distribution



Red (76%)

Green (63%)

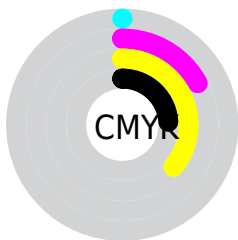
Blue (49%)



Red (74%)

Yellow (76%)

Blue (49%)

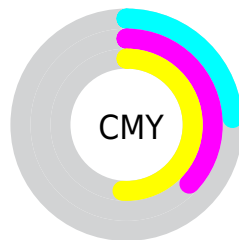


Cyan (0%)

Magenta (17%)

Yellow (36%)

Black (24%)



Cyan (24%)

Magenta (37%)

Yellow (51%)

Brightness & Saturation Gradients

These gradients show how the Hex color C3A17C changes by changing the brightness by 10 percent. The first figure shows a shift by +10% for each color and the second figure -10%.

Similar to the brightness gradients but the following saturation gradients show a change of the Hex color C3A17C by changing the saturation by 10% instead.

 C3A17C

FFFFFF

 FDD8B1

 FFF4CC

 FFFFFE9

 C3A17C

 A78763

 8C6E4B

 725534

 583E1E

 3F2807

 281400

 010000

 000000

 C3A17C

 C3A17C

 C39869

 C3AA90

 C38E55

 C3B4A3

 C38542

 C3BDB7

 C37C2E

 C3C6CA

 C3721A

 C3D0DD

 C36907

 C3D9F1

 C36600

 C3E2FF

 C3ECFF

 C3F5FF

Harmonies

Analogous

The Analogous color harmony consists of three colors that are next to each other on the color wheel.



D19A89



C3A17C



ADA97B

Triad

The Triadic color harmony groups three colors that are evenly spaced from another and form a triangle on the color wheel.



C3A17C



67B4B0



B79EC8

Complementary

The Complementary color scheme is a pair of colors which are on the opposite of each other on the color wheel.



C3A17C



7C9EC3

Split Complementary

Split-complementary colors differ from the complementary color scheme. The scheme consists of three colors, the original color and two neighbors of the complement color.



99A6D3



C3A17C



66B2C5

Square

The Square scheme is like the rectangle color scheme, but the four colors are evenly spaced on the color wheel.



C3A17C



7AB399



7AADD2



CC98B5

Rectangle

The Rectangle color scheme consists of four colors that form a rectangle on the color wheel.



C3A17C



9CAD80



7AADD2



ADA0CD

Sweetspot

The Sweet Spot groups the original color and five complimentary colors.



C3A17C



FCEFE1



C37C9E



80786F



000000



808080

Same Dimension

The Same Dimension uses a secret algorithm to generate beautiful new colors.



C3A17C



FCC78D



C2C37C



615C57



A15400



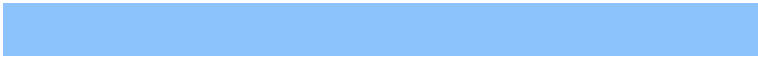
211100

Inverse Universe

The Inverse Universe completely reimagines the original color for something new.



7C9EC3



8DC3FC



7D7CC3



575C61



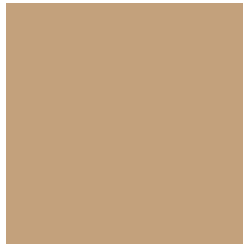
004DA1



001021

Previews

White Background



This preview shows how the Hex color C3A17C looks on a white background.

Color Contrast Check

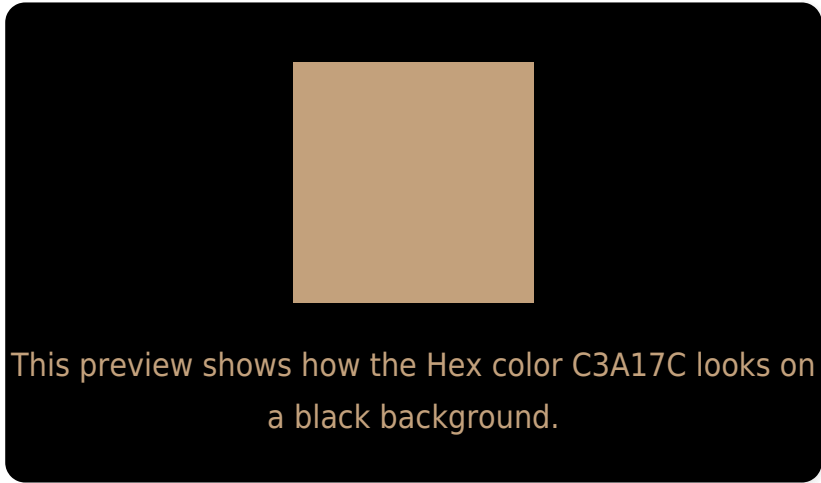
Large Text (above 18pt) WCAG AA × Fail

Any Text WCAG AA × Fail

Large Text (above 18pt) WCAG AAA × Fail

Any Text WCAG AAA × Fail

Black Background



Color Contrast Check

Large Text (above 18pt) WCAG AA ✓ Pass

Any Text WCAG AA ✓ Pass

Large Text (above 18pt) WCAG AAA ✓ Pass

Any Text WCAG AAA ✓ Pass

If you want to check with other color combinations, try the [Color Contrast Checker](#).

Hex C3A17C Background



This preview shows how black text looks on a background with the Hex color C3A17C.

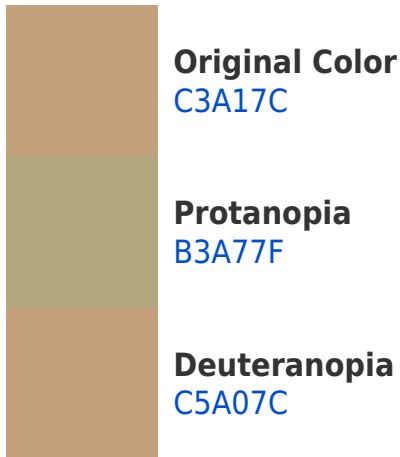


This preview shows how white text looks on a background with the Hex color C3A17C.

Color Blindness Simulation

Color vision deficiency is a very complex topic, and I could not describe the different causes any better than Wikipedia does, so if you want to learn more, you should check out their [article about color blindness](#).

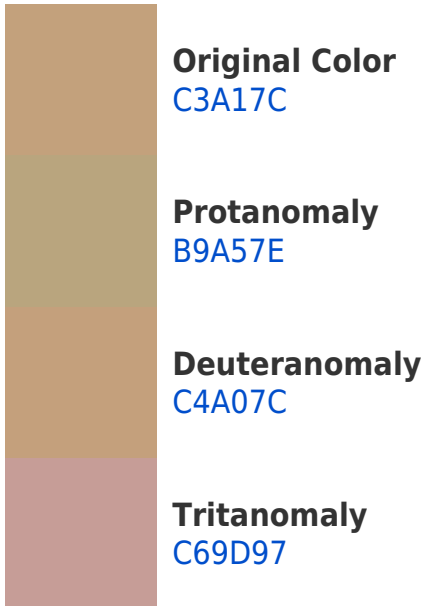
Dichromacy



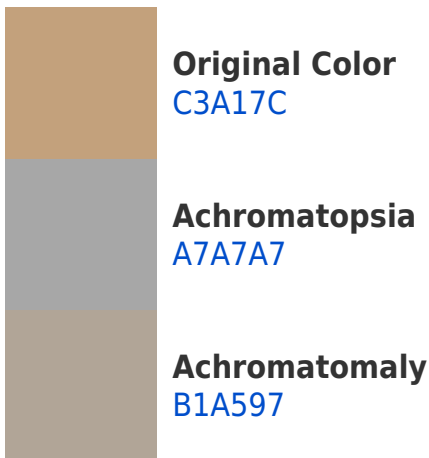


Tritanopia
C89BA7

Trichromacy



Monochromacy



CSS Examples

Text

The CSS property to change the color of the text to Hex C3A17C is called "color". The color property can be set on classes, ids or directly on the HTML element.

This example shows how text in the color #C3A17C looks like.

```
.text, #text, p{  
    color:#C3A17C  
}
```

If you want to add a text shadow in that color use the text-shadow property, you can generate a text shadow directly with our [CSS Text Shadow Generator](#).

Here you see how black text with a 4 pixel #C3A17C colored shadow looks like.

```
.shadow{ text-shadow: 4px 4px 2px #C3A17C
}
```

Border

The CSS property to change the border of an element to Hex C3A17C is called "border". The border property can be set on classes, ids or directly on the HTML element.

This example shows the color as border, it can be applied via the CSS property "border" or "border-color".

```
.border, #border, table{ border:4px solid
#C3A17C }
```

If only the border color should be changed use the property `border-color`.

```
.border{ border-color:#C3A17C }
```

If you want to add a box shadow in that color use:

Here you see how a box with a 4 pixel #C3A17C colored shadow looks like.

```
.boxshadow{ -moz-box-shadow:4px 4px 4px  
4px #C3A17C; -webkit-box-shadow:4px 4px  
4px 4px #C3A17C; box-shadow:4px 4px 4px  
4px #C3A17C }
```

Background

The CSS property to change the background color of an element to Hex C3A17C is called "background". The background property can be set on classes, ids or directly on the HTML element.

```
.background, #background, body{  
background:#C3A17C }
```

If only the background color should be changed can be used:

```
.background{ background-color:#C3A17C }
```

This example shows the color as background, it is applied via the CSS property "background".

To optimize and compress your CSS code, you can use our [online CSS compressor and optimizer](#) based on csstidy. If you want to create a linear or radial gradient as background or border, check our [CSS Gradient Generator](#).

Hey! You found this booklet interesting? Support Converting Colors with the new Membership Option!

The pro membership hides all ads, plus gives you double the colors in the color bucket, and more awesome pro features!

[Learn more, Memberships starting at \\$2.50/m!](#)

**Follow me
on Twitter!**

@ConvertingColor