

# Converting Colors

Hex(C3A292)

Have a look what the booklet for  
Hex(C3A292) contains.

<b>Hex(C3A292)</b> .....	3
<b><i>Conversions</i></b> .....	4
<b><i>Details</i></b> .....	6
<b><i>Harmonies</i></b> .....	11
<b><i>Previews</i></b> .....	23
<b><i>Color Blindness Simulation</i></b> .....	26
<b><i>CSS Examples</i></b> .....	29

**Color**

**Hex(C3A292)**

# Conversions

## Conversions Part 1

Format	Color
Hex	C3A292
RGB	195, 162, 146
RGB Percent	76%, 64%, 57%
CMY	0.2353, 0.3647, 0.4275
CMYK	0.00, 0.17, 0.25, 0.24
HSL	20°, 29%, 67%
HSV	20°, 25%, 76%
XYZ	40.6143, 39.5181, 32.6813
YIQ	170.0430, 24.8040, 2.0200

# Conversions

## Conversions Part 2

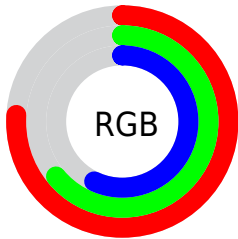
<b>Format</b>	<b>Color</b>
<b>R<sub>YB</sub></b>	195, 170, 146
Decimal	12821138
CIE <sub>Lab</sub>	69.12, 9.69, 12.86
CIE <sub>LCh</sub>	69, 16.098, 53.012
Yxy	39.5181, 0.3600, 0.3503
Android (android.graphics.Color)	4291011218 (0xFFC3A292)
YUV	170.0430, -11.8532, 21.8873
Hunter-Lab	62.8634, 5.3129, 13.1808

# Details

The Hex color **C3A292** is a light color, and the websafe version is hex **CC9999**. A complement of this color would be **92B3C3**, and the grayscale version is **AAAAAA**.

A 20% lighter version of the original color is **FCD9C8**, and **8D6E5F** is the 20% darker color. If you saturate the color by 10%, you get **C3957F**, and if you desaturate by 10%, it is **C3AFA5**.

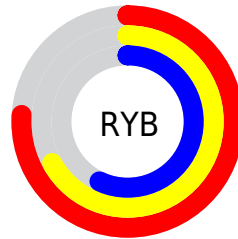
# Distribution



Red (76%)

Green (64%)

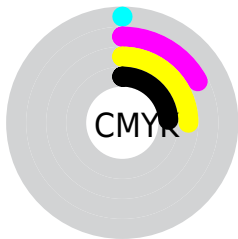
Blue (57%)



Red (76%)

Yellow (67%)

Blue (57%)

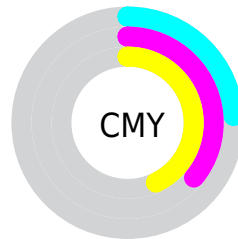


Cyan (0%)

Magenta (17%)

Yellow (25%)

Black (24%)



Cyan (24%)

Magenta (36%)

Yellow (43%)

# Brightness & Saturation Gradients

These gradients show how the Hex color C3A292 changes by changing the brightness by 10 percent. The first figure shows a shift by +10% for each color and the second figure -10%.

Similar to the brightness gradients but the following saturation gradients show a change of the Hex color C3A292 by changing the saturation by 10% instead.





C3A292



C3A292

FFFFFF



A78878



FCD9C8



8D6E5F



FFF5E4



735648



593F31



41291C



2B1402



0F0000



000000



C3A292



C3A292

 C3957F

 C3AFA5

 C3886B

 C3BCB9

 C37B58

 C3C9CD

 C36D44

 C3D7E0

 C36031

 C3E4F3

 C3531D

 C3F1FF

 C3460A

 C3FEFF

 C34000

 C3FFFF

# Harmonies

## Analogous

The Analogous color harmony consists of three colors that are next to each other on the color wheel.



C89F9E



C3A292



B8A78C

# Triad

The Triadic color harmony groups three colors that are evenly spaced from another and form a triangle on the color wheel.



C3A292



89B1A5



A7A6C3

# Complementary

The Complementary color scheme is a pair of colors which are on the opposite of each other on the color wheel.



C3A292



92B3C3

# Split Complementary

Split-complementary colors differ from the complementary color scheme. The scheme consists of three colors, the original color and two neighbors of the complement color.



94ABC5



C3A292



82B1B4

# Square

The Square scheme is like the rectangle color scheme, but the four colors are evenly spaced on the color wheel.



C3A292



97AF97



86AFBF



B9A2BA

# Rectangle

The Rectangle color scheme consists of four colors that form a rectangle on the color wheel.



C3A292



AEEA8C



86AFBF



A1A8C5

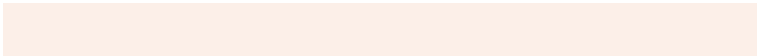


# Sweetspot

The Sweet Spot groups the original color and five complimentary colors.



C3A292



FCEFE8



C392B3



807773



000000



808080



# Same Dimension

The Same Dimension uses a secret algorithm to generate beautiful new colors.



C3A292



FCC9B1



C3BA92



615A57



A13400



210B00

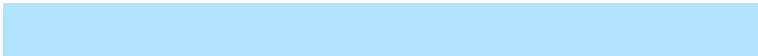


# Inverse Universe

The Inverse Universe completely reimagines the original color for something new.



92B3C3



B1E4FC



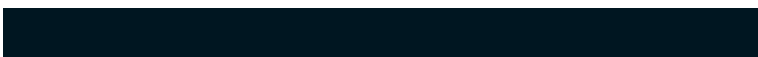
929BC3



575E61



006CA1

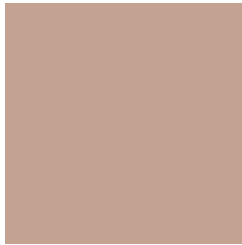


001621



# Previews

## White Background



This preview shows how the Hex color C3A292 looks on a white background.

## Color Contrast Check

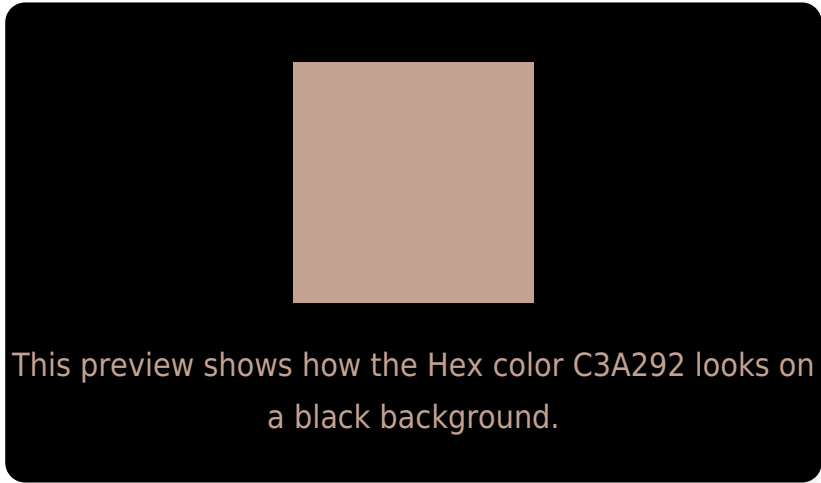
Large Text (above 18pt) WCAG AA × Fail

Any Text WCAG AA × Fail

Large Text (above 18pt) WCAG AAA × Fail

Any Text WCAG AAA × Fail

# Black Background



## Color Contrast Check

Large Text (above 18pt) WCAG AA ✓ Pass

Any Text WCAG AA ✓ Pass

Large Text (above 18pt) WCAG AAA ✓ Pass

Any Text WCAG AAA ✓ Pass

If you want to check with other color combinations, try the [Color Contrast Checker](#).



## Hex C3A292 Background



This preview shows how black text looks on a background with the Hex color C3A292.

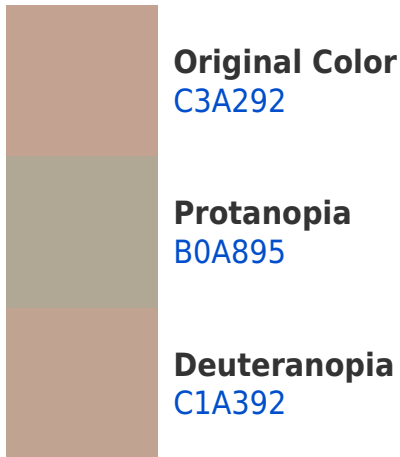


This preview shows how white text looks on a background with the Hex color C3A292.

# Color Blindness Simulation

Color vision deficiency is a very complex topic, and I could not describe the different causes any better than Wikipedia does, so if you want to learn more, you should check out their [article about color blindness](#).

## Dichromacy





**Tritanopia**  
C69EAB

# Trichromacy



**Original Color**  
C3A292

**Protanomaly**  
B7A694

**Deuteranomaly**  
C2A392

**Tritanomaly**  
C59FA2

# Monochromacy



**Original Color**  
C3A292

**Achromatopsia**  
AAAAAA

**Achromatomaly**  
B3A7A1

# CSS Examples

## Text

The CSS property to change the color of the text to Hex C3A292 is called "color". The color property can be set on classes, ids or directly on the HTML element.

This example shows how text in the color #C3A292 looks like.

```
.text, #text, p{  
    color:#C3A292  
}
```

If you want to add a text shadow in that color use the text-shadow property, you can generate a text shadow directly with our [CSS Text Shadow Generator](#).

Here you see how black text with a 4 pixel #C3A292 colored shadow looks like.

```
.shadow{ text-shadow: 4px 4px 2px #C3A292
}
```

## Border

The CSS property to change the border of an element to Hex C3A292 is called "border". The border property can be set on classes, ids or directly on the HTML element.

This example shows the color as border, it can be applied via the CSS property "border" or "border-color".

```
.border, #border, table{ border:4px solid
#C3A292 }
```

If only the border color should be changed use the property `border-color`.

```
.border{ border-color:#C3A292 }
```

If you want to add a box shadow in that color use:

Here you see how a box with a 4 pixel #C3A292 colored shadow looks like.

```
.boxshadow{ -moz-box-shadow:4px 4px 4px  
4px #C3A292; -webkit-box-shadow:4px 4px  
4px 4px #C3A292; box-shadow:4px 4px 4px  
4px #C3A292 }
```

# Background

The CSS property to change the background color of an element to Hex C3A292 is called "background". The background property can be set on classes, ids or directly on the HTML element.

```
.background, #background, body{  
background:#C3A292 }
```

If only the background color should be changed can be used:

```
.background{ background-color:#C3A292 }
```

This example shows the color as background, it is applied via the CSS property "background".

To optimize and compress your CSS code, you can use our [online CSS compressor and optimizer](#) based on csstidy. If you want to create a linear or radial gradient as background or border, check our [CSS Gradient Generator](#).



Hey! You found this booklet interesting? Support Converting Colors with the new Membership Option!

The pro membership hides all ads, plus gives you double the colors in the color bucket, and more awesome pro features!

**[Learn more, Memberships starting at \\$2.50/m!](#)**

**Follow me  
on Twitter!**

@ConvertingColor