

Converting Colors

Hex(C3A2A4)

Have a look what the booklet for
Hex(C3A2A4) contains.

Hex(C3A2A4)	3
<i>Conversions</i>	4
<i>Details</i>	6
<i>Harmonies</i>	11
<i>Previews</i>	23
<i>Color Blindness Simulation</i>	26
<i>CSS Examples</i>	29

Color

Hex(C3A2A4)

Conversions

Conversions Part 1

Format	Color
Hex	C3A2A4
RGB	195, 162, 164
RGB Percent	76%, 64%, 64%
CMY	0.2353, 0.3647, 0.3569
CMYK	0.00, 0.17, 0.16, 0.24
HSL	356°, 22%, 70%
HSV	356°, 17%, 76%
XYZ	42.1268, 40.1231, 40.6462
YIQ	172.0950, 19.0260, 7.6180

Conversions

Conversions Part 2

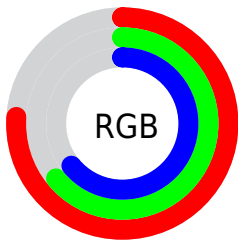
Format	Color
RYB	195, 162, 164
Decimal	12821156
CIELab	69.56, 12.44, 3.51
CIElCh	70, 12.925, 15.737
Yxy	40.1231, 0.3428, 0.3265
Android (android.graphics.Color)	4291011236 (0xFFC3A2A4)
YUV	172.0950, -3.9908, 20.0877
Hunter-Lab	63.3428, 7.8636, 6.2944

Details

The Hex color **C3A2A4** is a light color, and the websafe version is hex **CC9999**. A complement of this color would be **A2C3C1**, and the grayscale version is **ACACAC**.

A 20% lighter version of the original color is **FCD9DB**, and **8D6E70** is the 20% darker color. If you saturate the color by 10%, you get **C38F92**, and if you desaturate by 10%, it is **C3B6B6**.

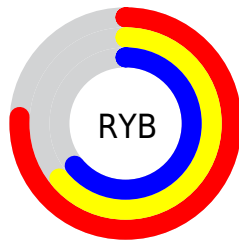
Distribution



Red (76%)

Green (64%)

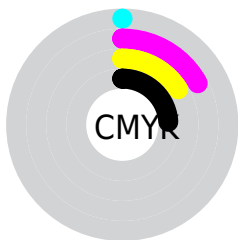
Blue (64%)



Red (76%)

Yellow (64%)

Blue (64%)

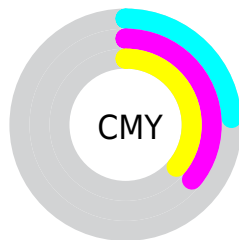


Cyan (0%)

Magenta (17%)

Yellow (16%)

Black (24%)



Cyan (24%)

Magenta (36%)

Yellow (36%)

Brightness & Saturation Gradients

These gradients show how the Hex color C3A2A4 changes by changing the brightness by 10 percent. The first figure shows a shift by +10% for each color and the second figure -10%.

Similar to the brightness gradients but the following saturation gradients show a change of the Hex color C3A2A4 by changing the saturation by 10% instead.



C3A2A4



C3A2A4

FFFFFF



A8888A



FCD9DB



8D6E70



FFF5F7



735658



5A3F41



42282B



2B1416



170000



000000



C3A2A4



C3A2A4

 C38F92

 C3B6B6

 C37B7F

 C3C9C9

 C3686D

 C3DCDB

 C3545B

 C3F0ED

 C34148

 C3FFFF

 C32D36

 C31924

 C30611

 C3000C

Harmonies

Analogous

The Analogous color harmony consists of three colors that are next to each other on the color wheel.



BEA2B0



C3A2A4



C1A49A

Triad

The Triadic color harmony groups three colors that are evenly spaced from another and form a triangle on the color wheel.



C3A2A4



9FAE99



97ADC0

Complementary

The Complementary color scheme is a pair of colors which are on the opposite of each other on the color wheel.



C3A2A4



A2C3C1

Split Complementary

Split-complementary colors differ from the complementary color scheme. The scheme consists of three colors, the original color and two neighbors of the complement color.



8EAFBA



C3A2A4



93B0A4

Square

The Square scheme is like the rectangle color scheme, but the four colors are evenly spaced on the color wheel.



C3A2A4



ADAB93



8DB1B0



A5A9C0

Rectangle

The Rectangle color scheme consists of four colors that form a rectangle on the color wheel.



C3A2A4



BCA695



8DB1B0



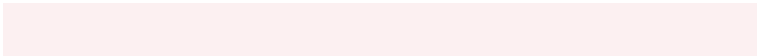
93AEBF

Sweetspot

The Sweet Spot groups the original color and five complimentary colors.



C3A2A4



FCF0F1



C1A2C3



807878



000000



808080

Same Dimension

The Same Dimension uses a secret algorithm to generate beautiful new colors.



C3A2A4



FCCACD



C3B0A2



615758



A1000A



210002

Inverse Universe

The Inverse Universe completely reimagines the original color for something new.



C3A2A4



FCCACD



A2B5C3



615758



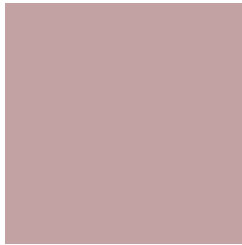
A1000A



210002

Previews

White Background



This preview shows how the Hex color C3A2A4 looks on a white background.

Color Contrast Check

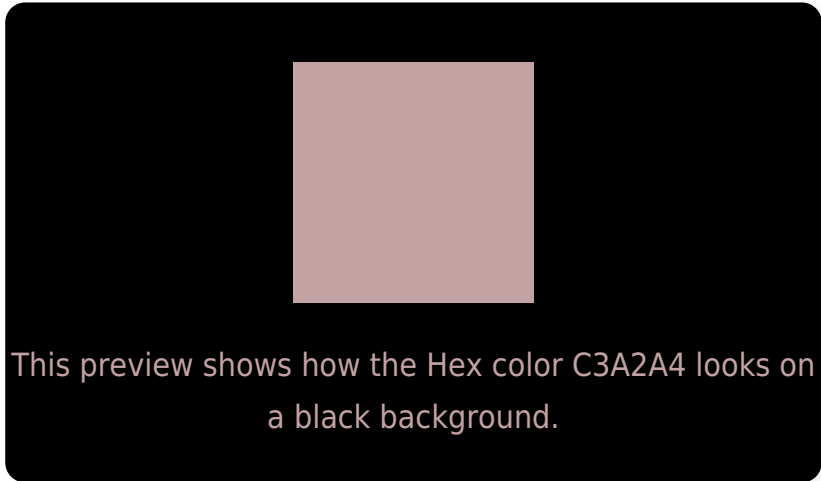
Large Text (above 18pt) WCAG AA × Fail

Any Text WCAG AA × Fail

Large Text (above 18pt) WCAG AAA × Fail

Any Text WCAG AAA × Fail

Black Background



Color Contrast Check

Large Text (above 18pt) WCAG AA ✓ Pass

Any Text WCAG AA ✓ Pass

Large Text (above 18pt) WCAG AAA ✓ Pass

Any Text WCAG AAA ✓ Pass

If you want to check with other color combinations, try the [Color Contrast Checker](#).

Hex C3A2A4 Background



This preview shows how black text looks on a background with the Hex color C3A2A4.

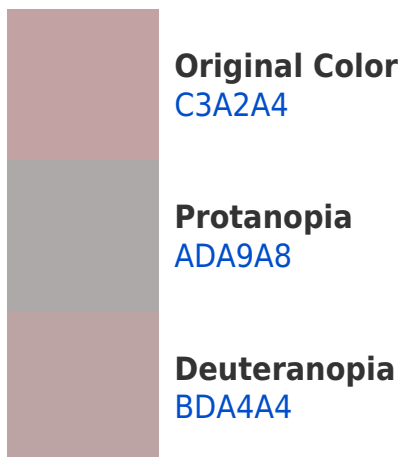


This preview shows how white text looks on a background with the Hex color C3A2A4.

Color Blindness Simulation

Color vision deficiency is a very complex topic, and I could not describe the different causes any better than Wikipedia does, so if you want to learn more, you should check out their [article about color blindness](#).

Dichromacy





Tritanopia
C4A1AD

Trichromacy



Original Color
C3A2A4

Protanomaly
B5A6A7

Deuteranomaly
BFA3A4

Tritanomaly
C4A1AA

Monochromacy



Original Color
C3A2A4

Achromatopsia
ACACAC

Achromatomaly
B4A8A9

CSS Examples

Text

The CSS property to change the color of the text to Hex C3A2A4 is called "color". The color property can be set on classes, ids or directly on the HTML element.

This example shows how text in the color #C3A2A4 looks like.

```
.text, #text, p{  
    color:#C3A2A4  
}
```

If you want to add a text shadow in that color use the text-shadow property, you can generate a text shadow directly with our [CSS Text Shadow Generator](#).

Here you see how black text with a 4 pixel #C3A2A4 colored shadow looks like.

```
.shadow{ text-shadow: 4px 4px 2px #C3A2A4 }  
}
```

Border

The CSS property to change the border of an element to Hex C3A2A4 is called "border". The border property can be set on classes, ids or directly on the HTML element.

This example shows the color as border, it can be applied via the CSS property "border" or "border-color".

```
.border, #border, table{ border:4px solid #C3A2A4 }  
}
```

If only the border color should be changed use the property `border-color`.

```
.border{ border-color:#C3A2A4 }
```

If you want to add a box shadow in that color use:

Here you see how a box with a 4 pixel #C3A2A4 colored shadow looks like.

```
.boxshadow{ -moz-box-shadow:4px 4px 4px  
4px #C3A2A4; -webkit-box-shadow:4px 4px  
4px 4px #C3A2A4; box-shadow:4px 4px 4px  
4px #C3A2A4 }
```

Background

The CSS property to change the background color of an element to Hex C3A2A4 is called "background". The background property can be set on classes, ids or directly on the HTML element.

```
.background, #background, body{  
background:#C3A2A4 }
```

If only the background color should be changed can be used:

```
.background{ background-color:#C3A2A4 }
```

This example shows the color as background, it is applied via the CSS property "background".

To optimize and compress your CSS code, you can use our [online CSS compressor and optimizer](#) based on csstidy. If you want to create a linear or radial gradient as background or border, check our [CSS Gradient Generator](#).

Hey! You found this booklet interesting? Support Converting Colors with the new Membership Option!

The pro membership hides all ads, plus gives you double the colors in the color bucket, and more awesome pro features!

[Learn more, Memberships starting at \\$2.50/m!](#)

**Follow me
on Twitter!**

@ConvertingColor