

Converting Colors

Hex(C3A89A)

Have a look what the booklet for
Hex(C3A89A) contains.

Hex(C3A89A)	3
<i>Conversions</i>	4
<i>Details</i>	6
<i>Harmonies</i>	11
<i>Previews</i>	23
<i>Color Blindness Simulation</i>	26
<i>CSS Examples</i>	29

Color

Hex(C3A89A)

Conversions

Conversions Part 1

Format	Color
Hex	C3A89A
RGB	195, 168, 154
RGB Percent	76%, 66%, 60%
CMY	0.2353, 0.3412, 0.3961
CMYK	0.00, 0.14, 0.21, 0.24
HSL	20°, 25%, 68%
HSV	20°, 21%, 76%
XYZ	42.3410, 41.9405, 36.4356
YIQ	174.4770, 20.5860, 1.3700

Conversions

Conversions Part 2

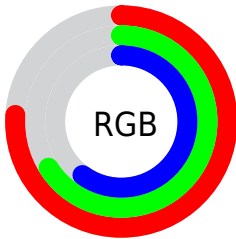
Format	Color
RYB	195, 175, 154
Decimal	12822682
CIELab	70.83, 7.60, 10.85
CIELCh	71, 13.251, 55.004
Yxy	41.9405, 0.3507, 0.3474
Android (android.graphics.Color)	4291012762 (0xFFC3A89A)
YUV	174.4770, -10.0952, 17.9987
Hunter-Lab	64.7615, 3.3708, 11.9758

Details

The Hex color **C3A89A** is a light color, and the websafe version is hex **CC9999**. A complement of this color would be **9AB5C3**, and the grayscale version is **AFAFAF**.

A 20% lighter version of the original color is **FCDFD0**, and **8D7467** is the 20% darker color. If you saturate the color by 10%, you get **C39B86**, and if you desaturate by 10%, it is **C3B5AD**.

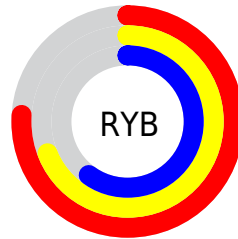
Distribution



Red (76%)

Green (66%)

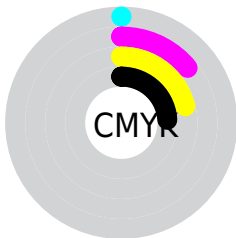
Blue (60%)



Red (76%)

Yellow (69%)

Blue (60%)

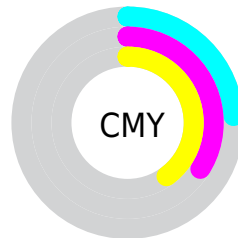


Cyan (0%)

Magenta (14%)

Yellow (21%)

Black (24%)



Cyan (24%)

Magenta (34%)

Yellow (40%)

Brightness & Saturation Gradients

These gradients show how the Hex color C3A89A changes by changing the brightness by 10 percent. The first figure shows a shift by +10% for each color and the second figure -10%.

Similar to the brightness gradients but the following saturation gradients show a change of the Hex color C3A89A by changing the saturation by 10% instead.



C3A89A



C3A89A

FFFFFF



A88E80



FCDFD0



8D7467



FFFCED



735B4F



5A4438



422E23



2B190D



150000



000000



C3A89A



C3A89A

 C39B86

 C3B5AD

 C38E73

 C3C2C1

 C38160

 C3CFD4

 C3754C

 C3DBE8

 C36839

 C3E8FC

 C35B25

 C3F5FF

 C34E12

 C3FFFF

 C34300

Harmonies

Analogous

The Analogous color harmony consists of three colors that are next to each other on the color wheel.



C7A6A4



C3A89A



B9AC96

Triad

The Triadic color harmony groups three colors that are evenly spaced from another and form a triangle on the color wheel.



C3A89A



93B4AB



ADABC3

Complementary

The Complementary color scheme is a pair of colors which are on the opposite of each other on the color wheel.



C3A89A



9AB5C3

Split Complementary

Split-complementary colors differ from the complementary color scheme. The scheme consists of three colors, the original color and two neighbors of the complement color.



9EAF C5



C3A8 9A



8EB4 B7

Square

The Square scheme is like the rectangle color scheme, but the four colors are evenly spaced on the color wheel.



C3A89A



9EB39F



92B2C1



BBA7BB

Rectangle

The Rectangle color scheme consists of four colors that form a rectangle on the color wheel.



C3A89A



B1AE96



92B2C1



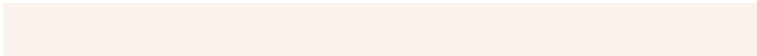
A8ACC4

Sweetspot

The Sweet Spot groups the original color and five complimentary colors.



C3A89A



FCF2ED



C39AB5



807A77



000000



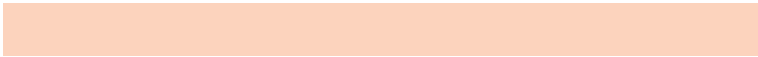
808080

Same Dimension

The Same Dimension uses a secret algorithm to generate beautiful new colors.



C3A89A



FCD3BD



C3BC9A



615B57



A13700



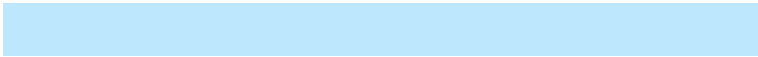
210B00

Inverse Universe

The Inverse Universe completely reimagines the original color for something new.



9AB5C3



BDE7FC



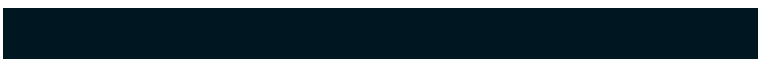
9AA1C3



575E61



006AA1



001621

Previews

White Background



This preview shows how the Hex color C3A89A looks on a white background.

Color Contrast Check

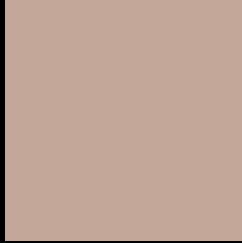
Large Text (above 18pt) WCAG AA × Fail

Any Text WCAG AA × Fail

Large Text (above 18pt) WCAG AAA × Fail

Any Text WCAG AAA × Fail

Black Background



This preview shows how the Hex color C3A89A looks on a black background.

Color Contrast Check

Large Text (above 18pt) WCAG AA ✓ Pass

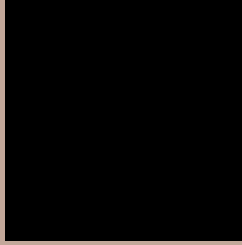
Any Text WCAG AA ✓ Pass

Large Text (above 18pt) WCAG AAA ✓ Pass

Any Text WCAG AAA ✓ Pass

If you want to check with other color combinations, try the [Color Contrast Checker](#).

Hex C3A89A Background



This preview shows how black text looks on a background with the Hex color C3A89A.

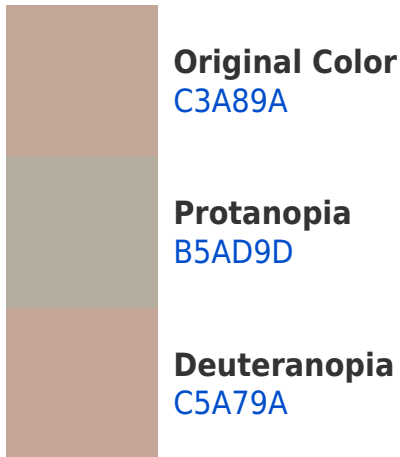


This preview shows how white text looks on a background with the Hex color C3A89A.

Color Blindness Simulation

Color vision deficiency is a very complex topic, and I could not describe the different causes any better than Wikipedia does, so if you want to learn more, you should check out their [article about color blindness](#).

Dichromacy





Tritanopia
C6A5B1

Trichromacy



Original Color
C3A89A

Protanomaly
BAAB9C

Deuteranomaly
C4A79A

Tritanomaly
C5A6A9

Monochromacy



Original Color
C3A89A

Achromatopsia
AEAEAE

Achromatomaly
B6ACA7

CSS Examples

Text

The CSS property to change the color of the text to Hex C3A89A is called "color". The color property can be set on classes, ids or directly on the HTML element.

This example shows how text in the color #C3A89A looks like.

```
.text, #text, p{  
    color:#C3A89A  
}
```

If you want to add a text shadow in that color use the text-shadow property, you can generate a text shadow directly with our [CSS Text Shadow Generator](#).

Here you see how black text with a 4 pixel #C3A89A colored shadow looks like.

```
.shadow{ text-shadow: 4px 4px 2px #C3A89A
}
```

Border

The CSS property to change the border of an element to Hex C3A89A is called "border". The border property can be set on classes, ids or directly on the HTML element.

This example shows the color as border, it can be applied via the CSS property "border" or "border-color".

```
.border, #border, table{ border:4px solid
#C3A89A }
```

If only the border color should be changed use the property `border-color`.

```
.border{ border-color:#C3A89A }
```

If you want to add a box shadow in that color use:

Here you see how a box with a 4 pixel #C3A89A colored shadow looks like.

```
.boxshadow{ -moz-box-shadow:4px 4px 4px  
4px #C3A89A; -webkit-box-shadow:4px 4px  
4px 4px #C3A89A; box-shadow:4px 4px 4px  
4px #C3A89A }
```

Background

The CSS property to change the background color of an element to Hex C3A89A is called "background". The background property can be set on classes, ids or directly on the HTML element.

```
.background, #background, body{  
background:#C3A89A }
```

If only the background color should be changed can be used:

```
.background{ background-color:#C3A89A }
```

This example shows the color as background, it is applied via the CSS property "background".

To optimize and compress your CSS code, you can use our [online CSS compressor and optimizer](#) based on csstidy. If you want to create a linear or radial gradient as background or border, check our [CSS Gradient Generator](#).

Hey! You found this booklet interesting? Support Converting Colors with the new Membership Option!

The pro membership hides all ads, plus gives you double the colors in the color bucket, and more awesome pro features!

[Learn more, Memberships starting at \\$2.50/m!](#)

**Follow me
on Twitter!**

@ConvertingColor