

Converting Colors

Hex(C3A999)

Have a look what the booklet for
Hex(C3A999) contains.

Hex(C3A999)	3
<i>Conversions</i>	4
<i>Details</i>	6
<i>Harmonies</i>	11
<i>Previews</i>	23
<i>Color Blindness Simulation</i>	26
<i>CSS Examples</i>	29

Color

Hex(C3A999)

Conversions

Conversions Part 1

Format	Color
Hex	C3A999
RGB	195, 169, 153
RGB Percent	76%, 66%, 60%
CMY	0.2353, 0.3373, 0.4000
CMYK	0.00, 0.13, 0.22, 0.24
HSL	23°, 26%, 68%
HSV	23°, 22%, 76%
XYZ	42.4434, 42.2779, 36.0604
YIQ	174.9500, 20.6320, 0.5360

Conversions

Conversions Part 2

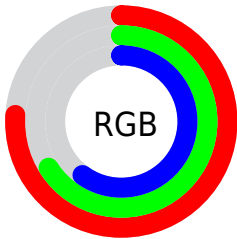
Format	Color
RYB	195, 179, 153
Decimal	12822937
CIELab	71.06, 6.91, 11.73
CIELCh	71, 13.615, 59.521
Yxy	42.2779, 0.3514, 0.3500
Android (android.graphics.Color)	4291013017 (0xFFC3A999)
YUV	174.9500, -10.8213, 17.5839
Hunter-Lab	65.0215, 2.7300, 12.6332

Details

The Hex color **C3A999** is a light color, and the websafe version is hex **CC9999**. A complement of this color would be **99B3C3**, and the grayscale version is **AFAFAF**.

A 20% lighter version of the original color is **FCE0CF**, and **8D7566** is the 20% darker color. If you saturate the color by 10%, you get **C39D86**, and if you desaturate by 10%, it is **C3B5AC**.

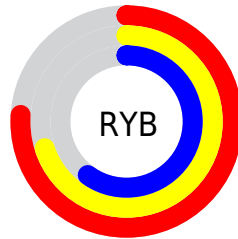
Distribution



Red (76%)

Green (66%)

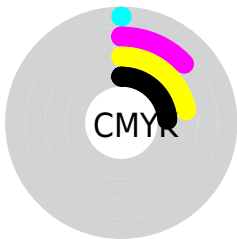
Blue (60%)



Red (76%)

Yellow (70%)

Blue (60%)

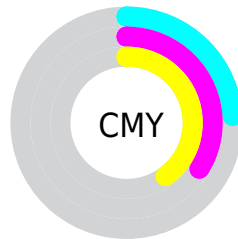


Cyan (0%)

Magenta (13%)

Yellow (22%)

Black (24%)



Cyan (24%)

Magenta (34%)

Yellow (40%)

Brightness & Saturation Gradients

These gradients show how the Hex color C3A999 changes by changing the brightness by 10 percent. The first figure shows a shift by +10% for each color and the second figure -10%.

Similar to the brightness gradients but the following saturation gradients show a change of the Hex color C3A999 by changing the saturation by 10% instead.



C3A999



C3A999

FFFFFF



A88F7F



FCE0CF



8D7566



FFFDEC



735C4E



5A4537



422F22



2B1A0C



150000



000000



C3A999



C3A999

 C39D86

 C3B5AC

 C39172

 C3C1C0

 C3855F

 C3CDD3

 C3794B

 C3D9E7

 C36D38

 C3E5FB

 C36124

 C3F1FF

 C35511

 C3FEFF

 C34A00

 C3FFFF

Harmonies

Analogous

The Analogous color harmony consists of three colors that are next to each other on the color wheel.



C8A6A2



C3A999



B8AD95

Triad

The Triadic color harmony groups three colors that are evenly spaced from another and form a triangle on the color wheel.



C3A999



92B5AD



B0ABC3

Complementary

The Complementary color scheme is a pair of colors which are on the opposite of each other on the color wheel.



C3A999



99B3C3

Split Complementary

Split-complementary colors differ from the complementary color scheme. The scheme consists of three colors, the original color and two neighbors of the complement color.



A0AFC6



C3A999



8EB5BA

Square

The Square scheme is like the rectangle color scheme, but the four colors are evenly spaced on the color wheel.



C3A999



9CB4A1



94B3C3



BEA7BB

Rectangle

The Rectangle color scheme consists of four colors that form a rectangle on the color wheel.



C3A999



AFB097



94B3C3



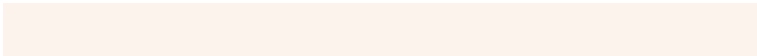
ABACC5

Sweetspot

The Sweet Spot groups the original color and five complimentary colors.



C3A999



FCF3ED



C399B4



807A77



000000



808080

Same Dimension

The Same Dimension uses a secret algorithm to generate beautiful new colors.



C3A999



FCD4BB



C3BD99



615B57



A13D00



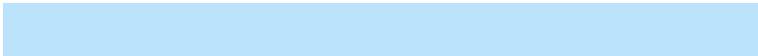
210D00

Inverse Universe

The Inverse Universe completely reimagines the original color for something new.



99B3C3



BBE3FC



999FC3



575D61



0063A1



001521

Previews

White Background



This preview shows how the Hex color C3A999 looks on a white background.

Color Contrast Check

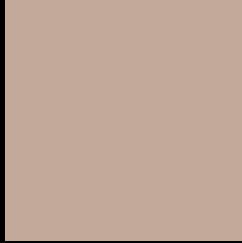
Large Text (above 18pt) WCAG AA × Fail

Any Text WCAG AA × Fail

Large Text (above 18pt) WCAG AAA × Fail

Any Text WCAG AAA × Fail

Black Background



This preview shows how the Hex color C3A999 looks on a black background.

Color Contrast Check

Large Text (above 18pt) WCAG AA ✓ Pass

Any Text WCAG AA ✓ Pass

Large Text (above 18pt) WCAG AAA ✓ Pass

Any Text WCAG AAA ✓ Pass

If you want to check with other color combinations, try the [Color Contrast Checker](#).

Hex C3A999 Background



This preview shows how black text looks on a background with the Hex color C3A999.

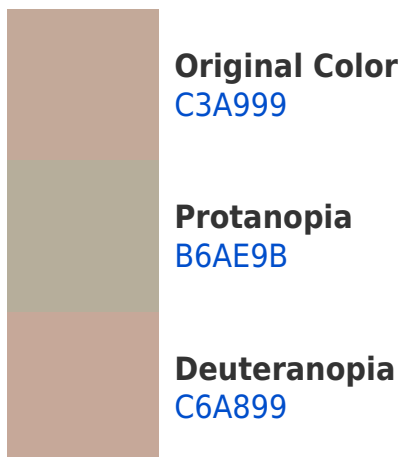


This preview shows how white text looks on a background with the Hex color C3A999.

Color Blindness Simulation

Color vision deficiency is a very complex topic, and I could not describe the different causes any better than Wikipedia does, so if you want to learn more, you should check out their [article about color blindness](#).

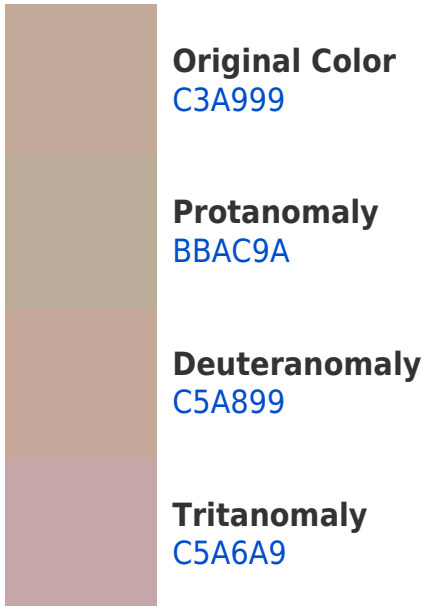
Dichromacy



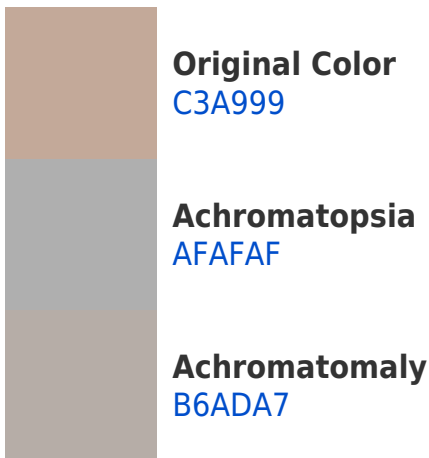


Tritanopia
C6A5B2

Trichromacy



Monochromacy



CSS Examples

Text

The CSS property to change the color of the text to Hex C3A999 is called "color". The color property can be set on classes, ids or directly on the HTML element.

This example shows how text in the color #C3A999 looks like.

```
.text, #text, p{  
    color:#C3A999  
}
```

If you want to add a text shadow in that color use the text-shadow property, you can generate a text shadow directly with our [CSS Text Shadow Generator](#).

Here you see how black text with a 4 pixel #C3A999 colored shadow looks like.

```
.shadow{ text-shadow: 4px 4px 2px #C3A999
}
```

Border

The CSS property to change the border of an element to Hex C3A999 is called "border". The border property can be set on classes, ids or directly on the HTML element.

This example shows the color as border, it can be applied via the CSS property "border" or "border-color".

```
.border, #border, table{ border:4px solid
#C3A999 }
```

If only the border color should be changed use the property `border-color`.

```
.border{ border-color:#C3A999 }
```

If you want to add a box shadow in that color use:

Here you see how a box with a 4 pixel #C3A999 colored shadow looks like.

```
.boxshadow{ -moz-box-shadow:4px 4px 4px  
4px #C3A999; -webkit-box-shadow:4px 4px  
4px 4px #C3A999; box-shadow:4px 4px 4px  
4px #C3A999 }
```

Background

The CSS property to change the background color of an element to Hex C3A999 is called "background". The background property can be set on classes, ids or directly on the HTML element.

```
.background, #background, body{  
background:#C3A999 }
```

If only the background color should be changed can be used:

```
.background{ background-color:#C3A999 }
```

This example shows the color as background, it is applied via the CSS property "background".

To optimize and compress your CSS code, you can use our [online CSS compressor and optimizer](#) based on csstidy. If you want to create a linear or radial gradient as background or border, check our [CSS Gradient Generator](#).

Hey! You found this booklet interesting? Support Converting Colors with the new Membership Option!

The pro membership hides all ads, plus gives you double the colors in the color bucket, and more awesome pro features!

[Learn more, Memberships starting at \\$2.50/m!](#)

**Follow me
on Twitter!**

@ConvertingColor