

# Converting Colors

Hex(C3AA92)

Have a look what the booklet for  
Hex(C3AA92) contains.

<b>Hex(C3AA92)</b> .....	3
<b><i>Conversions</i></b> .....	4
<b><i>Details</i></b> .....	6
<b><i>Harmonies</i></b> .....	11
<b><i>Previews</i></b> .....	23
<b><i>Color Blindness Simulation</i></b> .....	26
<b><i>CSS Examples</i></b> .....	29

**Color**

**Hex(C3AA92)**

# Conversions

## Conversions Part 1

<b>Format</b>	<b>Color</b>
Hex	C3AA92
RGB	195, 170, 146
RGB Percent	76%, 67%, 57%
CMY	0.2353, 0.3333, 0.4275
CMYK	0.00, 0.13, 0.25, 0.24
HSL	29°, 29%, 67%
HSV	29°, 25%, 76%
XYZ	42.0687, 42.4269, 33.1661
YIQ	174.7390, 22.6040, -2.1640

# Conversions

## Conversions Part 2

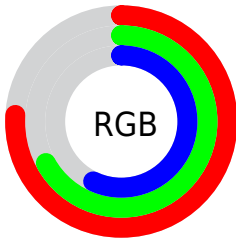
Format	Color
<a href="#">RYB</a>	<a href="#">195, 193, 146</a>
Decimal	<a href="#">12823186</a>
CIELab	<a href="#">71.16, 5.34, 15.72</a>
CIELCh	<a href="#">71, 16.597, 71.240</a>
Yxy	<a href="#">42.4269, 0.3575, 0.3606</a>
Android (android.graphics.Color)	<a href="#">4291013266 (0xFFC3AA92)</a>
YUV	<a href="#">174.7390, -14.1683, 17.7689</a>
Hunter-Lab	<a href="#">65.1359, 1.2982, 15.4057</a>

# Details

The Hex color **C3AA92** is a light color, and the websafe version is hex **CC9999**. A complement of this color would be **92ABC3**, and the grayscale version is **AFAFAF**.

A 20% lighter version of the original color is **FCE1C8**, and **8D765F** is the 20% darker color. If you saturate the color by 10%, you get **C3A07F**, and if you desaturate by 10%, it is **C3B4A5**.

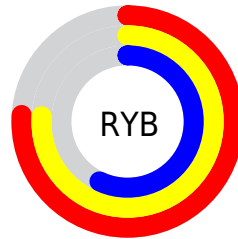
# Distribution



Red (76%)

Green (67%)

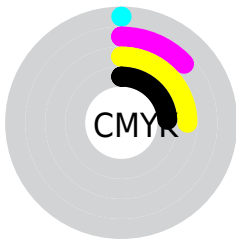
Blue (57%)



Red (76%)

Yellow (76%)

Blue (57%)

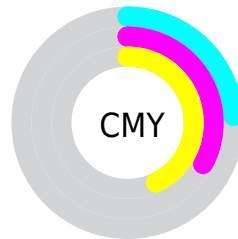


Cyan (0%)

Magenta (13%)

Yellow (25%)

Black (24%)



Cyan (24%)

Magenta (33%)

Yellow (43%)

# Brightness & Saturation Gradients

These gradients show how the Hex color C3AA92 changes by changing the brightness by 10 percent. The first figure shows a shift by +10% for each color and the second figure -10%.

Similar to the brightness gradients but the following saturation gradients show a change of the Hex color C3AA92 by changing the saturation by 10% instead.





C3AA92



C3AA92

FFFFFF



A79078



FCE1C8



8D765F



FFFEE4



735D48



5A4631



412F1C



2B1B03



120000



000000



C3AA92



C3AA92

 C3A07F

 C3B4A5

 C3966B

 C3BEB9

 C38C58

 C3C8CD

 C38244

 C3D2E0

 C37831

 C3DCF3

 C36E1D

 C3E6FF

 C3640A

 C3F0FF

 C36000

 C3FAFF

 C3FFFF

# Harmonies

## Analogous

The Analogous color harmony consists of three colors that are next to each other on the color wheel.



CCA69B



C3AA92



B4AF91

# Triad

The Triadic color harmony groups three colors that are evenly spaced from another and form a triangle on the color wheel.



C3AA92



88B7B4



B8A9C5

# Complementary

The Complementary color scheme is a pair of colors which are on the opposite of each other on the color wheel.



C3AA92



92ABC3

# Split Complementary

Split-complementary colors differ from the complementary color scheme. The scheme consists of three colors, the original color and two neighbors of the complement color.



A5AECC



C3AA92



88B6C2

# Square

The Square scheme is like the rectangle color scheme, but the four colors are evenly spaced on the color wheel.



C3AA92



93B6A4



92B2CA



C7A5B8

# Rectangle

The Rectangle color scheme consists of four colors that form a rectangle on the color wheel.



C3AA92



A9B294



92B2CA



B2AAC8

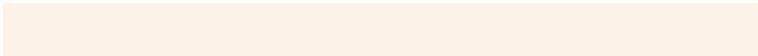


# Sweetspot

The Sweet Spot groups the original color and five complimentary colors.



C3AA92



FCF2E8



C392AB



807973



000000



808080



# Same Dimension

The Same Dimension uses a secret algorithm to generate beautiful new colors.



C3AA92



FCD6B1



C3C292



615C57



A14F00



211000

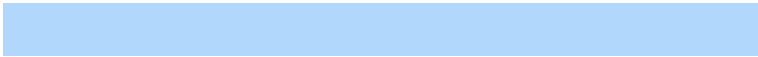


# Inverse Universe

The Inverse Universe completely reimagines the original color for something new.



92ABC3



B1D7FC



9293C3



575C61



0052A1

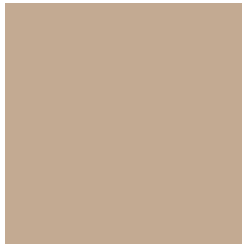


001121



# Previews

## White Background



This preview shows how the Hex color C3AA92 looks on a white background.

## Color Contrast Check

Large Text (above 18pt) WCAG AA × Fail

Any Text WCAG AA × Fail

Large Text (above 18pt) WCAG AAA × Fail

Any Text WCAG AAA × Fail

# Black Background



This preview shows how the Hex color C3AA92 looks on a black background.

## Color Contrast Check

Large Text (above 18pt) WCAG AA ✓ Pass

Any Text WCAG AA ✓ Pass

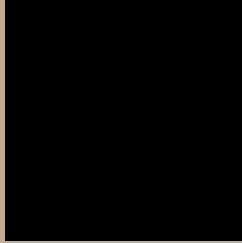
Large Text (above 18pt) WCAG AAA ✓ Pass

Any Text WCAG AAA ✓ Pass

If you want to check with other color combinations, try the [Color Contrast Checker](#).



## Hex C3AA92 Background



This preview shows how black text looks on a background with the Hex color C3AA92.



This preview shows how white text looks on a background with the Hex color C3AA92.

# Color Blindness Simulation

Color vision deficiency is a very complex topic, and I could not describe the different causes any better than Wikipedia does, so if you want to learn more, you should check out their [article about color blindness](#).

## Dichromacy



**Original Color**  
C3AA92

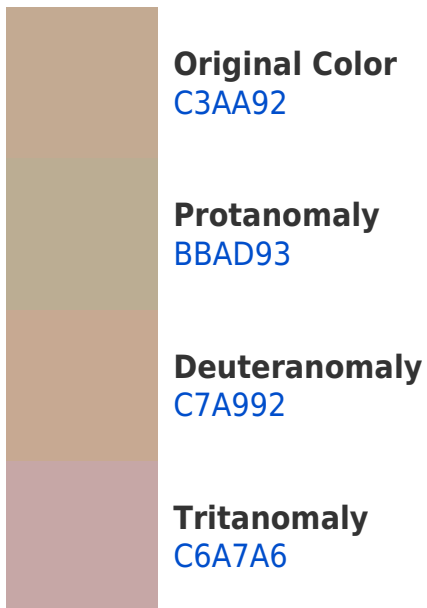
**Protanopia**  
B7AE94

**Deuteranopia**  
C9A892

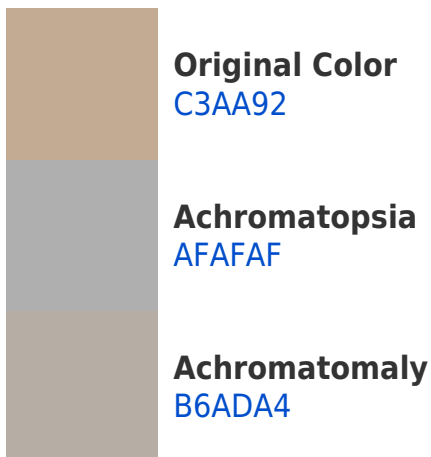


**Tritanopia**  
C7A5B2

# Trichromacy



# Monochromacy



# CSS Examples

## Text

The CSS property to change the color of the text to Hex C3AA92 is called "color". The color property can be set on classes, ids or directly on the HTML element.

This example shows how text in the color #C3AA92 looks like.

```
.text, #text, p{  
    color:#C3AA92  
}
```

If you want to add a text shadow in that color use the text-shadow property, you can generate a text shadow directly with our [CSS Text Shadow Generator](#).

Here you see how black text with a 4 pixel #C3AA92 colored shadow looks like.

```
.shadow{ text-shadow: 4px 4px 2px #C3AA92
}
```

## Border

The CSS property to change the border of an element to Hex C3AA92 is called "border". The border property can be set on classes, ids or directly on the HTML element.

This example shows the color as border, it can be applied via the CSS property "border" or "border-color".

```
.border, #border, table{ border:4px solid
#C3AA92 }
```

If only the border color should be changed use the property `border-color`.

```
.border{ border-color:#C3AA92 }
```

If you want to add a box shadow in that color use:

Here you see how a box with a 4 pixel #C3AA92 colored shadow looks like.

```
.boxshadow{ -moz-box-shadow:4px 4px 4px  
4px #C3AA92; -webkit-box-shadow:4px 4px  
4px 4px #C3AA92; box-shadow:4px 4px 4px  
4px #C3AA92 }
```

# Background

The CSS property to change the background color of an element to Hex C3AA92 is called "background". The background property can be set on classes, ids or directly on the HTML element.

```
.background, #background, body{  
background:#C3AA92 }
```

If only the background color should be changed can be used:

```
.background{ background-color:#C3AA92 }
```

This example shows the color as background, it is applied via the CSS property "background".

To optimize and compress your CSS code, you can use our [online CSS compressor and optimizer](#) based on csstidy. If you want to create a linear or radial gradient as background or border, check our [CSS Gradient Generator](#).



Hey! You found this booklet interesting? Support Converting Colors with the new Membership Option!

The pro membership hides all ads, plus gives you double the colors in the color bucket, and more awesome pro features!

**[Learn more, Memberships starting at \\$2.50/m!](#)**

**Follow me  
on Twitter!**

@ConvertingColor