

Converting Colors

Hex(C3AAB5)

Have a look what the booklet for
Hex(C3AAB5) contains.

Hex(C3AAB5)	3
<i>Conversions</i>	4
<i>Details</i>	6
<i>Harmonies</i>	11
<i>Previews</i>	23
<i>Color Blindness Simulation</i>	26
<i>CSS Examples</i>	29

Color

Hex(C3AAB5)

Conversions

Conversions Part 1

Format	Color
Hex	C3AAB5
RGB	195, 170, 181
RGB Percent	76%, 67%, 71%
CMY	0.2353, 0.3333, 0.2902
CMYK	0.00, 0.13, 0.07, 0.24
HSL	334°, 17%, 72%
HSV	334°, 13%, 76%
XYZ	45.2209, 43.6877, 49.7652
YIQ	178.7290, 11.3690, 8.7210

Conversions

Conversions Part 2

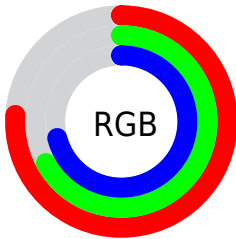
Format	Color
R_{YB}	195, 170, 181
Decimal	12823221
CIE _{Lab}	72.02, 10.94, -2.30
CIE _{LCh}	72, 11.180, 348.123
Yxy	43.6877, 0.3261, 0.3150
Android (android.graphics.Color)	4291013301 (0xFFC3AAB5)
YUV	178.7290, 1.1196, 14.2697
Hunter-Lab	66.0967, 6.4538, 1.6273

Details

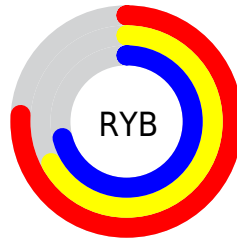
The Hex color **C3AAB5** is a light color, and the websafe version is hex **CC9999**. A complement of this color would be **AAC3B8**, and the grayscale version is **B3B3B3**.

A 20% lighter version of the original color is **FCE1ED**, and **8D7680** is the 20% darker color. If you saturate the color by 10%, you get **C397AA**, and if you desaturate by 10%, it is **C3BDC0**.

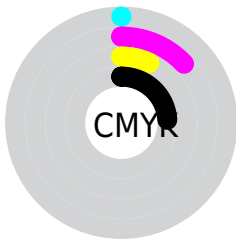
Distribution



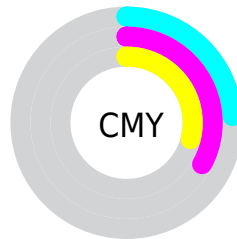
- Red (76%)
- Green (67%)
- Blue (71%)



- Red (76%)
- Yellow (67%)
- Blue (71%)



- Cyan (0%)
- Magenta (13%)
- Yellow (7%)
- Black (24%)



- Cyan (24%)
- Magenta (33%)
- Yellow (29%)

Brightness & Saturation Gradients

These gradients show how the Hex color C3AAB5 changes by changing the brightness by 10 percent. The first figure shows a shift by +10% for each color and the second figure -10%.

Similar to the brightness gradients but the following saturation gradients show a change of the Hex color C3AAB5 by changing the saturation by 10% instead.



C3AAB5



C3AAB5

FFFFFF



A88F9A



FCE1ED



8D7680

FFFEFF



745D67



5B454F



432F38



2D1A23



1A000D



000000



C3AAB5



C3AAB5

 C397AA

 C3BDC0

 C3839F

 C3D1CB

 C36F94

 C3E5D6

 C35C89

 C3F8E1

 C3497E

 C3FFEC

 C33573

 C3FFF7

 C32269

 C3FFFF

 C30E5E

 C30056

Harmonies

Analogous

The Analogous color harmony consists of three colors that are next to each other on the color wheel.



BAACBE



C3AAB5



C7AAAB

Triad

The Triadic color harmony groups three colors that are evenly spaced from another and form a triangle on the color wheel.



C3AAB5



B2B29D



99B5BF

Complementary

The Complementary color scheme is a pair of colors which are on the opposite of each other on the color wheel.



C3AAB5



AAC3B8

Split Complementary

Split-complementary colors differ from the complementary color scheme. The scheme consists of three colors, the original color and two neighbors of the complement color.



97B7B6



C3AAB5



A6B5A3

Square

The Square scheme is like the rectangle color scheme, but the four colors are evenly spaced on the color wheel.



C3AAB5



BDAE9D



9CB6AC



A1B3C4

Rectangle

The Rectangle color scheme consists of four colors that form a rectangle on the color wheel.



C3AAB5



C6ABA4



9CB6AC



97B6BD

Sweetspot

The Sweet Spot groups the original color and five complimentary colors.



C3AAB5



FCF2F7



B8AAC3



80797C



000000



808080

Same Dimension

The Same Dimension uses a secret algorithm to generate beautiful new colors.



C3AAB5



FCD7E7



C3ABAA



61575B



A10047



21000F

Inverse Universe

The Inverse Universe completely reimagines the original color for something new.



C3AAB5



FCD7E7



AAC2C3



61575B



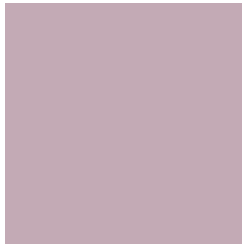
A10047



21000F

Previews

White Background



This preview shows how the Hex color C3AAB5 looks on a white background.

Color Contrast Check

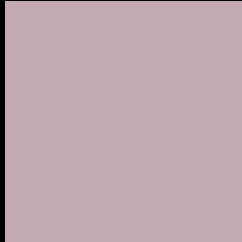
Large Text (above 18pt) WCAG AA × Fail

Any Text WCAG AA × Fail

Large Text (above 18pt) WCAG AAA × Fail

Any Text WCAG AAA × Fail

Black Background



This preview shows how the Hex color C3AAB5 looks on a black background.

Color Contrast Check

Large Text (above 18pt) WCAG AA ✓ Pass

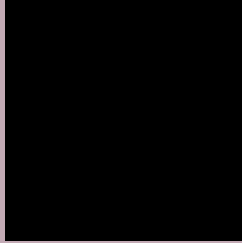
Any Text WCAG AA ✓ Pass

Large Text (above 18pt) WCAG AAA ✓ Pass

Any Text WCAG AAA ✓ Pass

If you want to check with other color combinations, try the [Color Contrast Checker](#).

Hex C3AAB5 Background



This preview shows how black text looks on a background with the Hex color C3AAB5.

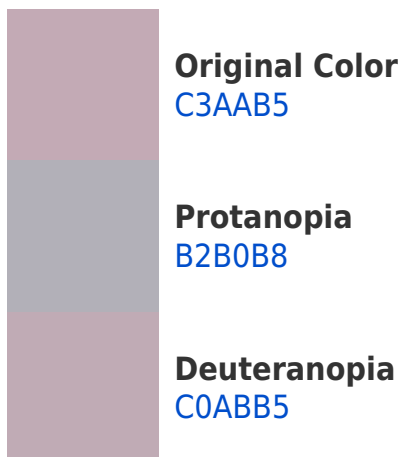


This preview shows how white text looks on a background with the Hex color C3AAB5.

Color Blindness Simulation

Color vision deficiency is a very complex topic, and I could not describe the different causes any better than Wikipedia does, so if you want to learn more, you should check out their [article about color blindness](#).

Dichromacy





Tritanopia
C3AAB7

Trichromacy



Original Color
C3AAB5

Protanomaly
B8AEB7

Deuteranomaly
C1ABB5

Tritanomaly
C3AAB6

Monochromacy



Original Color
C3AAB5

Achromatopsia
B3B3B3

Achromatomaly
B9B0B4

CSS Examples

Text

The CSS property to change the color of the text to Hex C3AAB5 is called "color". The color property can be set on classes, ids or directly on the HTML element.

This example shows how text in the color #C3AAB5 looks like.

```
.text, #text, p{  
  color:#C3AAB5  
}
```

If you want to add a text shadow in that color use the text-shadow property, you can generate a text shadow directly with our [CSS Text Shadow Generator](#).

Here you see how black text with a 4 pixel #C3AAB5 colored shadow looks like.

```
.shadow{ text-shadow: 4px 4px 2px #C3AAB5
}
```

Border

The CSS property to change the border of an element to Hex C3AAB5 is called "border". The border property can be set on classes, ids or directly on the HTML element.

This example shows the color as border, it can be applied via the CSS property "border" or "border-color".

```
.border, #border, table{ border:4px solid
#C3AAB5 }
```

If only the border color should be changed use the property `border-color`.

```
.border{ border-color:#C3AAB5 }
```

If you want to add a box shadow in that color use:

Here you see how a box with a 4 pixel #C3AAB5 colored shadow looks like.

```
.boxshadow{ -moz-box-shadow:4px 4px 4px  
4px #C3AAB5; -webkit-box-shadow:4px 4px  
4px 4px #C3AAB5; box-shadow:4px 4px 4px  
4px #C3AAB5 }
```

Background

The CSS property to change the background color of an element to Hex C3AAB5 is called "background". The background property can be set on classes, ids or directly on the HTML element.

```
.background, #background, body{  
background:#C3AAB5 }
```

If only the background color should be changed can be used:

```
.background{ background-color:#C3AAB5 }
```

This example shows the color as background, it is applied via the CSS property "background".

To optimize and compress your CSS code, you can use our [online CSS compressor and optimizer](#) based on csstidy. If you want to create a linear or radial gradient as background or border, check our [CSS Gradient Generator](#).

Hey! You found this booklet interesting? Support Converting Colors with the new Membership Option!

The pro membership hides all ads, plus gives you double the colors in the color bucket, and more awesome pro features!

[Learn more, Memberships starting at \\$2.50/m!](#)

**Follow me
on Twitter!**

@ConvertingColor