

Converting Colors

Hex(C3B4B3)

Have a look what the booklet for
Hex(C3B4B3) contains.

Hex(C3B4B3)	3
<i>Conversions</i>	4
<i>Details</i>	6
<i>Harmonies</i>	11
<i>Previews</i>	23
<i>Color Blindness Simulation</i>	26
<i>CSS Examples</i>	29

Color

Hex(C3B4B3)

Conversions

Conversions Part 1

Format	Color
Hex	C3B4B3
RGB	195, 180, 179
RGB Percent	76%, 71%, 70%
CMY	0.2353, 0.2941, 0.2980
CMYK	0.00, 0.08, 0.08, 0.24
HSL	4°, 12%, 73%
HSV	4°, 8%, 76%
XYZ	46.9636, 47.4993, 49.3409
YIQ	184.3710, 9.2610, 2.8690

Conversions

Conversions Part 2

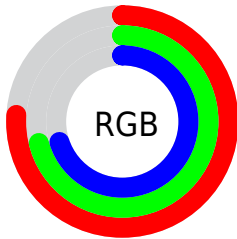
Format	Color
RYB	195, 180, 179
Decimal	12825779
CIELab	74.51, 5.16, 2.43
CIELCh	75, 5.708, 25.188
Yxy	47.4993, 0.3266, 0.3303
Android (android.graphics.Color)	4291015859 (0xFFC3B4B3)
YUV	184.3710, -2.6479, 9.3216
Hunter-Lab	68.9197, 1.0248, 5.7970

Details

The Hex color **C3B4B3** is a light color, and the websafe version is hex **CCCCCC**. A complement of this color would be **B3C2C3**, and the grayscale version is **B8B8B8**.

A 20% lighter version of the original color is **FCECEB**, and **8D7F7E** is the 20% darker color. If you saturate the color by 10%, you get **C3A29F**, and if you desaturate by 10%, it is **C3C6C6**.

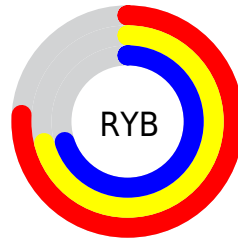
Distribution



Red (76%)

Green (71%)

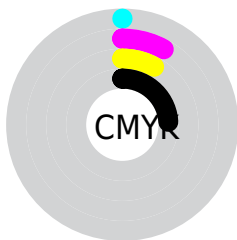
Blue (70%)



Red (76%)

Yellow (71%)

Blue (70%)

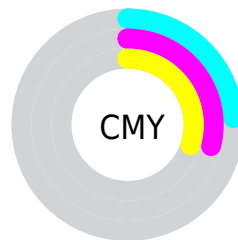


Cyan (0%)

Magenta (8%)

Yellow (8%)

Black (24%)



Cyan (24%)

Magenta (29%)

Yellow (30%)

Brightness & Saturation Gradients

These gradients show how the Hex color C3B4B3 changes by changing the brightness by 10 percent. The first figure shows a shift by +10% for each color and the second figure -10%.

Similar to the brightness gradients but the following saturation gradients show a change of the Hex color C3B4B3 by changing the saturation by 10% instead.



C3B4B3



C3B4B3

FFFFFF



A89998



FCECEB



8D7F7E



746665



5B4E4D



433737



2D2221



190C0B



000000



C3B4B3



C3B4B3

 C3A29F

 C3C6C6

 C38F8C

 C3D9DA

 C37D79

 C3EBEE

 C36B65

 C3FDFF

 C35951

 C3FFFF

 C3463E

 C3342B

 C32217

 C30F04

Harmonies

Analogous

The Analogous color harmony consists of three colors that are next to each other on the color wheel.



C2B4B8



C3B4B3



C1B5AF

Triad

The Triadic color harmony groups three colors that are evenly spaced from another and form a triangle on the color wheel.



C3B4B3



B1BAB1



B1B8C2

Complementary

The Complementary color scheme is a pair of colors which are on the opposite of each other on the color wheel.



C3B4B3



B3C2C3

Split Complementary

Split-complementary colors differ from the complementary color scheme. The scheme consists of three colors, the original color and two neighbors of the complement color.



ACB9C0



C3B4B3



ACBAB6

Square

The Square scheme is like the rectangle color scheme, but the four colors are evenly spaced on the color wheel.



C3B4B3



B7B8AE



ABBABB



B7B6C1

Rectangle

The Rectangle color scheme consists of four colors that form a rectangle on the color wheel.



C3B4B3



BEB6AD



ABBABB



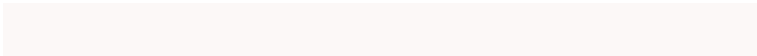
AFB9C1

Sweetspot

The Sweet Spot groups the original color and five complimentary colors.



C3B4B3



FCF8F7



C3B3C2



807D7D



000000



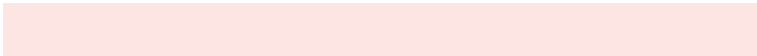
808080

Same Dimension

The Same Dimension uses a secret algorithm to generate beautiful new colors.



C3B4B3



FCE5E3



C3BCB3



615857



A10A00



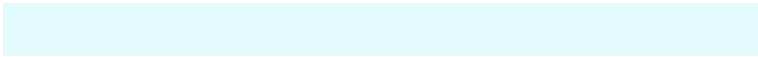
210200

Inverse Universe

The Inverse Universe completely reimagines the original color for something new.



B3C2C3



E3FBFC



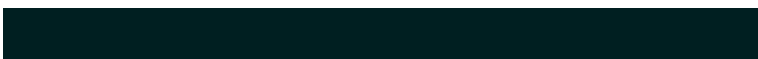
B3BAC3



576061



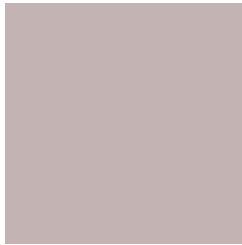
0097A1



001F21

Previews

White Background



This preview shows how the Hex color C3B4B3 looks on a white background.

Color Contrast Check

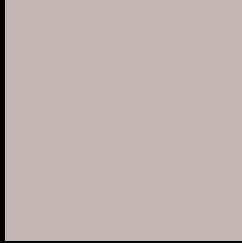
Large Text (above 18pt) WCAG AA × Fail

Any Text WCAG AA × Fail

Large Text (above 18pt) WCAG AAA × Fail

Any Text WCAG AAA × Fail

Black Background



This preview shows how the Hex color C3B4B3 looks on a black background.

Color Contrast Check

Large Text (above 18pt) WCAG AA ✓ Pass

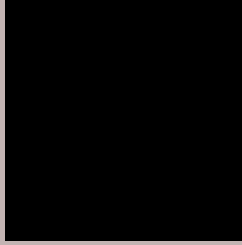
Any Text WCAG AA ✓ Pass

Large Text (above 18pt) WCAG AAA ✓ Pass

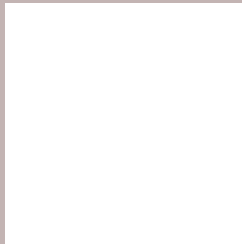
Any Text WCAG AAA ✓ Pass

If you want to check with other color combinations, try the [Color Contrast Checker](#).

Hex C3B4B3 Background



This preview shows how black text looks on a background with the Hex color C3B4B3.



This preview shows how white text looks on a background with the Hex color C3B4B3.

Color Blindness Simulation

Color vision deficiency is a very complex topic, and I could not describe the different causes any better than Wikipedia does, so if you want to learn more, you should check out their [article about color blindness](#).

Dichromacy



Original Color
C3B4B3

Protanopia
BBB6B4

Deuteranopia
CAB1B4



Tritanopia
C5B2C0

Trichromacy



Original Color
C3B4B3

Protanomaly
BEB5B4

Deuteranomaly
C7B2B4

Tritanomaly
C4B3BB

Monochromacy



Original Color
C3B4B3

Achromatopsia
B8B8B8

Achromatomaly
BCB7B6

CSS Examples

Text

The CSS property to change the color of the text to Hex C3B4B3 is called "color". The color property can be set on classes, ids or directly on the HTML element.

This example shows how text in the color #C3B4B3 looks like.

```
.text, #text, p{  
    color:#C3B4B3  
}
```

If you want to add a text shadow in that color use the text-shadow property, you can generate a text shadow directly with our [CSS Text Shadow Generator](#).

Here you see how black text with a 4 pixel #C3B4B3 colored shadow looks like.

```
.shadow{ text-shadow: 4px 4px 2px #C3B4B3
}
```

Border

The CSS property to change the border of an element to Hex C3B4B3 is called "border". The border property can be set on classes, ids or directly on the HTML element.

This example shows the color as border, it can be applied via the CSS property "border" or "border-color".

```
.border, #border, table{ border:4px solid
#C3B4B3 }
```

If only the border color should be changed use the property `border-color`.

```
.border{ border-color:#C3B4B3 }
```

If you want to add a box shadow in that color use:

Here you see how a box with a 4 pixel #C3B4B3 colored shadow looks like.

```
.boxshadow{ -moz-box-shadow:4px 4px 4px  
4px #C3B4B3; -webkit-box-shadow:4px 4px  
4px 4px #C3B4B3; box-shadow:4px 4px 4px  
4px #C3B4B3 }
```

Background

The CSS property to change the background color of an element to Hex C3B4B3 is called "background". The background property can be set on classes, ids or directly on the HTML element.

```
.background, #background, body{  
background:#C3B4B3 }
```

If only the background color should be changed can be used:

```
.background{ background-color:#C3B4B3 }
```

This example shows the color as background, it is applied via the CSS property "background".

To optimize and compress your CSS code, you can use our [online CSS compressor and optimizer](#) based on csstidy. If you want to create a linear or radial gradient as background or border, check our [CSS Gradient Generator](#).

Hey! You found this booklet interesting? Support Converting Colors with the new Membership Option!

The pro membership hides all ads, plus gives you double the colors in the color bucket, and more awesome pro features!

[Learn more, Memberships starting at \\$2.50/m!](#)

**Follow me
on Twitter!**

@ConvertingColor